

City of Topeka

Service Line Material Identification

As part of our Lead Reduction Program, we are asking residents to submit information on their water service line material.

Customer Information:

Customer Name (Please provide first & last name): _____

Owner/Tenant (Please provide if you own or rent your property): Owner Tenant

Customer Address: [Begin typing your address to search] _____

Best Contact Phone Number (Format: (XXX) XXX-XXXX): _____

Locate Your Water Meter

The water meter is typically found in the front yard, near the street or sidewalk. The water service line will be the pipe connected to the water meter.

The water service line will enter your building in the closest location to the meter (basement, crawl space, front closet, etc.) and will be visible with a shutoff valve.

For this effort, we are only interested in the service line material up to the shutoff valve, not beyond, and do not need to know the material of the plumbing in your home or business. Note that your water service line is not the pipe located under your kitchen sink.

Were you able to locate your water service line? Refer to the instructions above for assistance

Yes

No

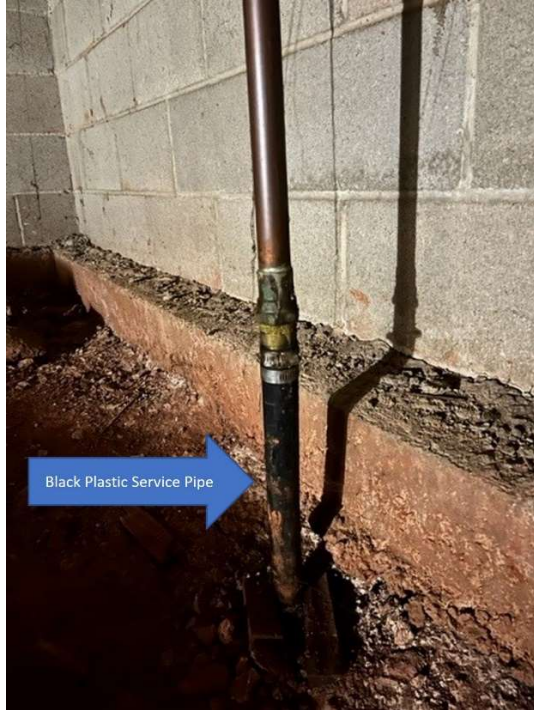
If Yes: Great! You located your water service line. You may proceed with the identification process. Expand the "Example Photos" group to review representative images of the different types of service line materials.

If No: We are sorry that you were not able to locate your water service line. You may not submit the survey without identifying your material. If you locate your water service line in the future, please return to this page & complete the form.

Service Line Material Identification Process

Example Photos:

Example of a Plastic Pipe



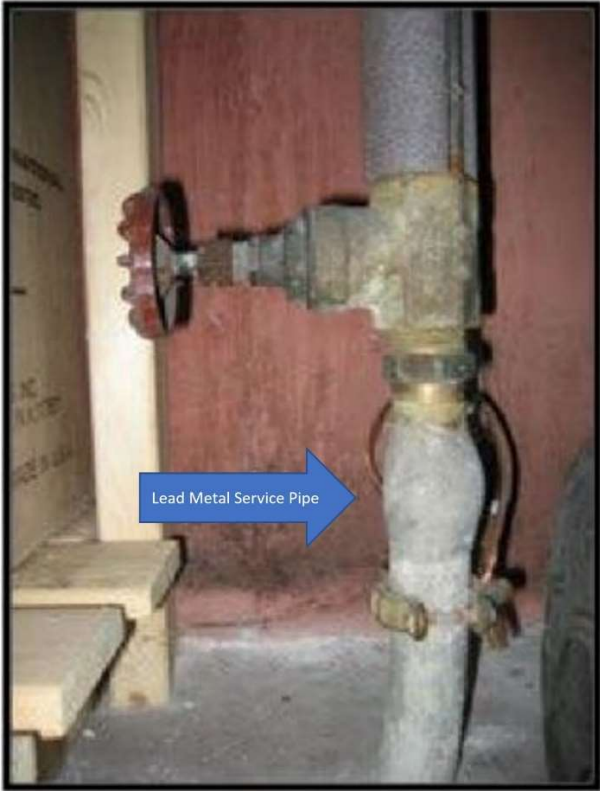
Example of a Copper Pipe



Example of a Galvanized Pipe



Example of a Lead Pipe



Material Identification:

Is the water service line entering the building plastic or metal?

Plastic: Your water service line is likely made of plastic. Extensive research has not been conducted on the effects of plastic service lines on drinking water, but it is generally accepted as a good plumbing material and will not expose you to lead through your drinking water. Please take a photo and upload it at the end of this survey so that we have a record of your water service line material.

Metal:

Metal response. **What color is the water service line?**

The service line is copper/orange like a penny. The service line may also include a light green/patina color, similar to the Statue of Liberty.

Your water service line is likely made of copper. While your water service line is not lead, it is possible that your plumbing may include lead fittings or lead solder, especially if your plumbing was installed prior to 1988. Please take a photo and upload it at the end of this survey so that we have record of your service line material.

The service line is silver/grey.

Silver/grey response. **Scratch Test and Magnet Test**

Scratch Test

Use a key or coin to scratch the pipe close to where it enters the house through the wall or floor. What best describes the results?

Hard to scratch and a dull appearance after being scratched.

Soft/easy to scratch and a shiny appearance after being scratched.

Magnet Test

Apply a magnet (like a refrigerator magnet) to the water service line. Does it stick?

Yes: Your water service line is likely made of galvanized steel or galvanized iron. These materials do not pose an inherent risk of exposing you to lead. Please take a photo and upload at the end of this survey so that we have a record of your service line material.

No: Your water service line is likely made of lead. You may be exposed to lead in your drinking water. All drinking water utilities are required by the EPA to create records of all lead service lines and develop a plan to replace them. Please take a photo and upload it at the end of this survey so that we have a record of your service line material and can make plans to replace it.

Photo Submission

Do you consent to the Utility using your image?

We may use the image you submit as an example for this process or in other Lead & Copper related content. You will remain anonymous.

I consent

I do not consent

Water Service Line Photo: Please take and upload a photo of where your water service line enters your building with the shutoff valve included in the photo. (Drop image box).

Feedback (optional)

We would appreciate your feedback on your experience with the material identification process.

This process was easy to understand:

Strongly Disagree Disagree Neutral Agree Strongly Agree

Feedback Comments: _____