



Quinton Heights-Steele Neighborhood SORT Project

Shunga Glenn Park, SW 24th St, and
SW Central Park Street

PROJECT SCOPE:

- RECONSTRUCT SW 24TH ST (BUCHANAN TO FILLMORE)
- RECONSTRUCT SW CENTRAL PARK ST FROM 26TH ST TO 24TH ST.
- RESURFACE GRAVEL ALLEY (SW 2300 BLOCK) BETWEEN CENTRAL PARK ST AND FILLMORE ST.
- 24TH & BUCHANAN TRAFFIC CALMING AND CROSSWALK
- SHUNGA GLEN BASKETBALL COURT

ASSOCIATED PROJECT:

- SHUNGA CREEK PEDESTRIAN BRIDGE
- SHUNGA GLEN 10' CONCRETE TRAIL

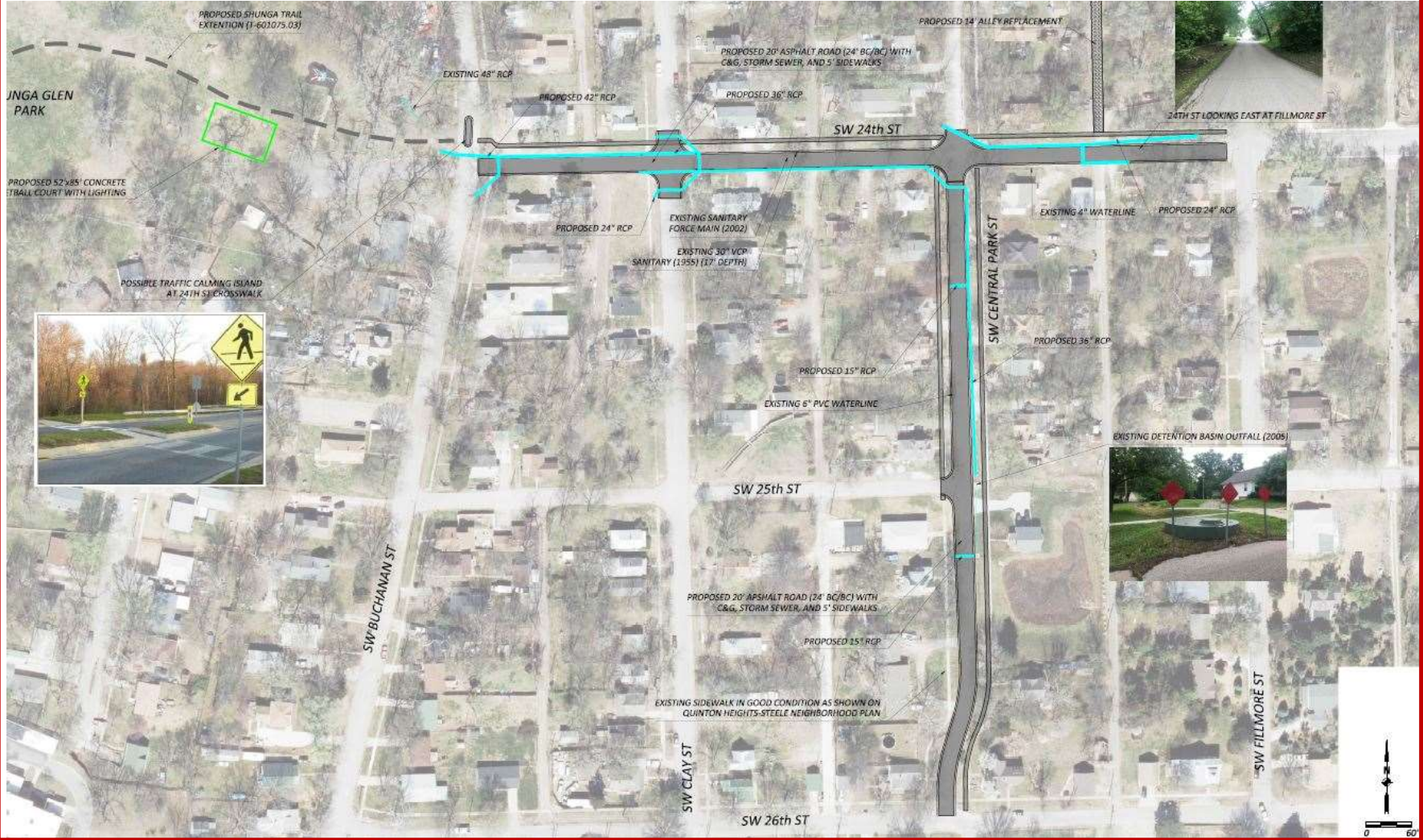
PROJECT CONTACT INFORMATION

City of Topeka Engineering
Linda Voss, PE
620 SE Madison
Topeka, KS 66607
(785) 368-3842
lvoss@topeka.org

Consultant: SBB Engineering,
LLC
Brian Austin, PE
1415 SW Topeka Blvd.
Topeka, KS 66612
Ph: 215-8630
brian.austin@sbbeng.com

Project Layout

Shunga Glenn Park, SW 24th St, and SW Central Park Street





Shunga Glen Basketball Court Layout

