

Point in time count

Topeka/Shawnee County Homeless Task Force

January 2025

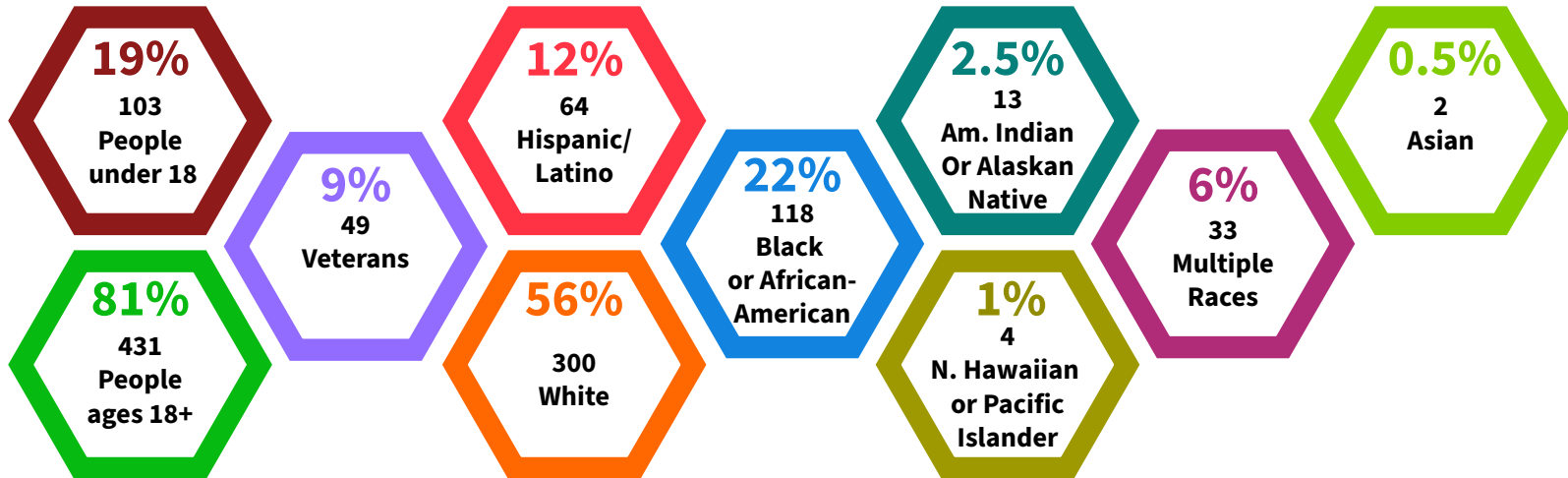


TOPEKA/SHAWNEE COUNTY

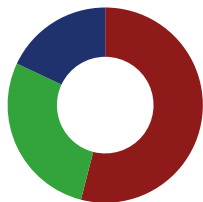
HOMELESS TASK FORCE

The annual Point in Time Homeless Count was conducted on January 22, 2025. This one-day event produces a snapshot of the individuals in our community experiencing homelessness as defined by U.S. Department of Housing and Urban Development (HUD). This data supports federal funding for the Continuum of Care Initiative.

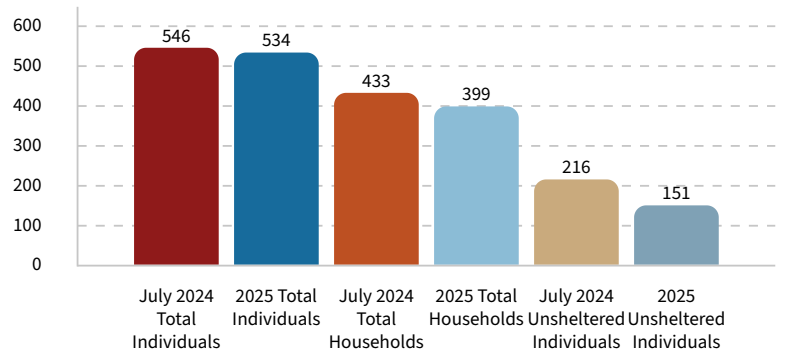
Demographics



Nighttime Locations At a Glance: 2024-2025



- 289 People In Emergency Shelter (54%)
- 151 Unsheltered (28%)
- 94 People In Transitional Housing (18%)



Contact: City of Topeka Division of Housing Services
620 SE Madison St., 1st Floor - Unit 8, Topeka, KS 66607
785-368-3711

Conteo de Personas Sin Hogar Point in Time Topeka/Shawnee County Homeless Task Force Enero 2025

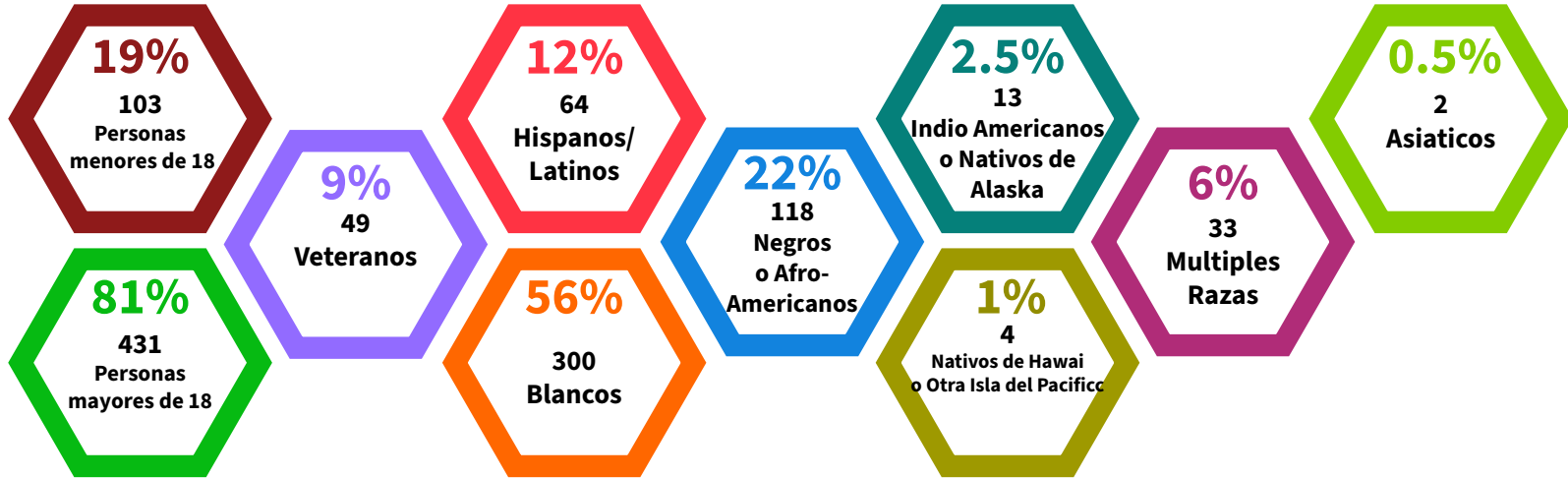
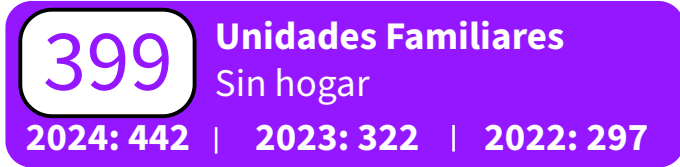
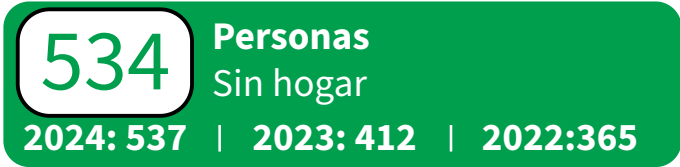


TOPEKA/SHAWNEE COUNTY

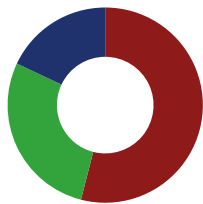
**HOMELESS
TASK FORCE**

El recuento anual de personas sin hogar Point in Time se realizó el 22 de enero de 2025. Este evento de un día nos muestra a las personas de nuestra comunidad que están experimentando la falta de hogar, según la definición del Departamento de Vivienda y Desarrollo Urbano de Estados Unidos (HUD). Estos datos respaldan la financiación federal para la iniciativa Continuum of Care.

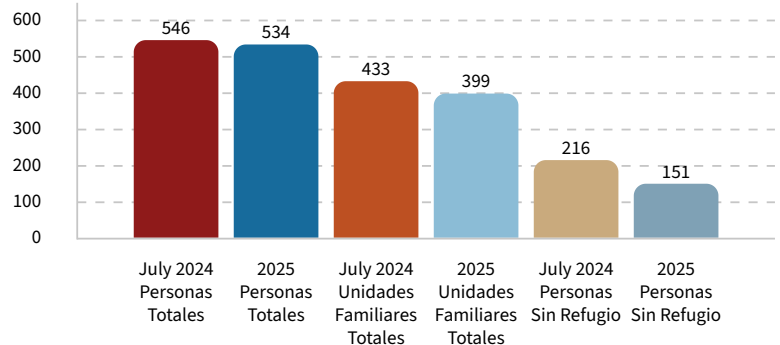
Demografía



Ubicaciones Nocturnas Resumen: 2024-2025



- 289 Personas en Refugios de Emergencia (54%)
- 151 Personas sin Refugio (28%)
- 94 Personas en Viviendas de Transición (18%)



Contacto: City of Topeka Division of Housing Services
620 SE Madison St., 1st Floor - Unit 8, Topeka, KS 66607
785-368-3711