

A large, irregular blue ink splash or watercolor blotch serves as the background for the text. It has a textured, painterly appearance with darker blue and greyish-blue tones at the edges and a more solid blue in the center.

River Road Crane St. to Emmett St.

Roadway Construction: 2024
City of Topeka Project Number T-841091.09

Presented By: Jeff Lolley, PE, Bartlett & West

Project Schedule & Highlights

NE River Road – Crane St. to Emmett St.

- **Project Design – 2023**
- **Roadway Construction – March 4th to October 18th, 2024**
- **Removal of existing guard fence along east side of roadway**
- **New full-depth concrete pavement from Crane to Hill's North entrance**
 - **New curb & gutter and storm inlet to improve roadway drainage**
- **New full-depth asphalt pavement from Hill's North Entrance to 901 River Road Park entrance**
 - **Installation of additional storm sewer inlets to improve roadway drainage**
 - **Installation of new concrete curb & gutter, grade behind new c&g to remove existing ditches and low-lying areas**

Project Highlights

NE River Road – Crane St. to Emmett St.



Project Highlights

NE River Road – Crane St. to Emmett St.



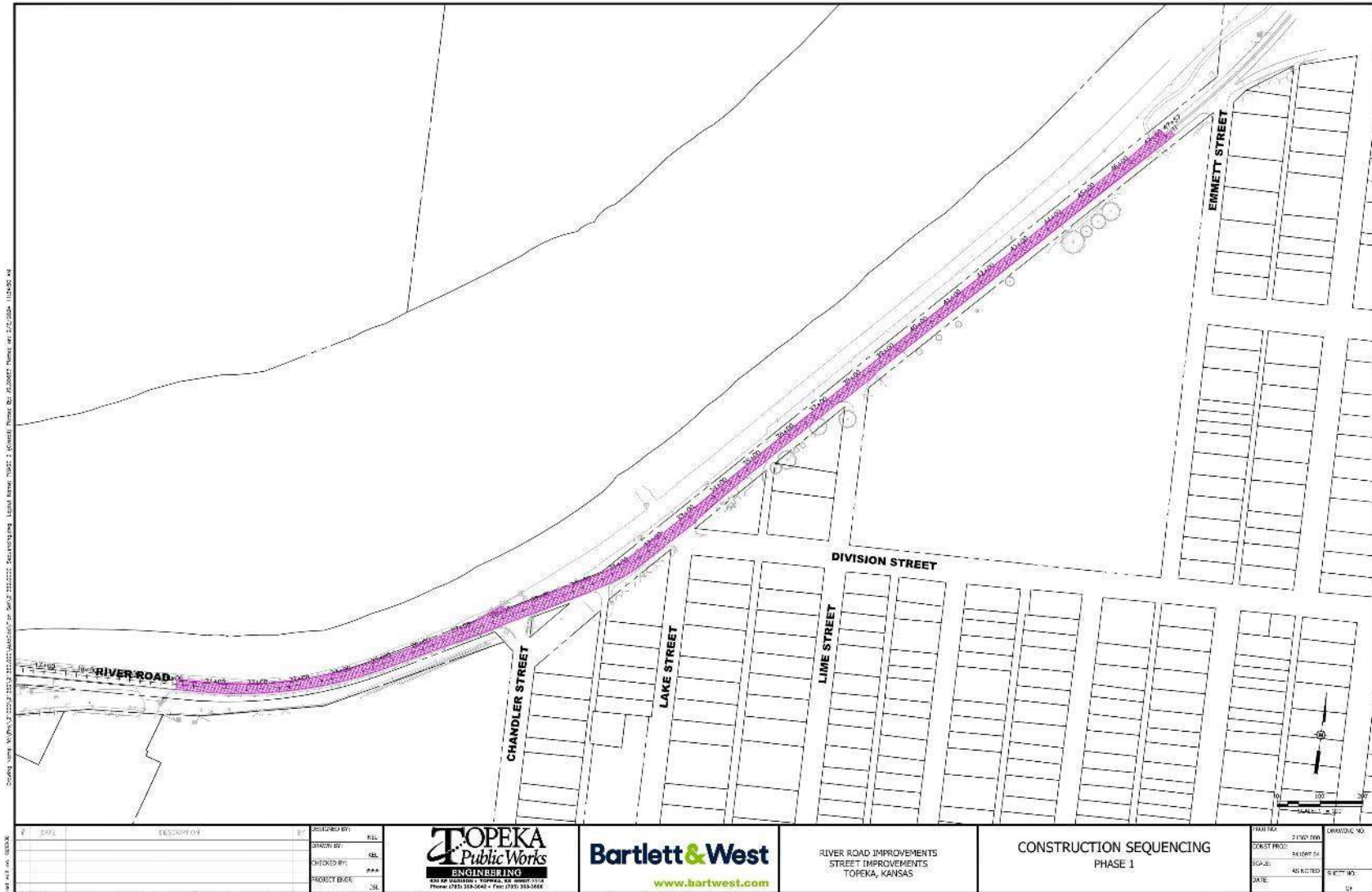
Project Highlights

NE River Road – Crane St. to Emmett St.



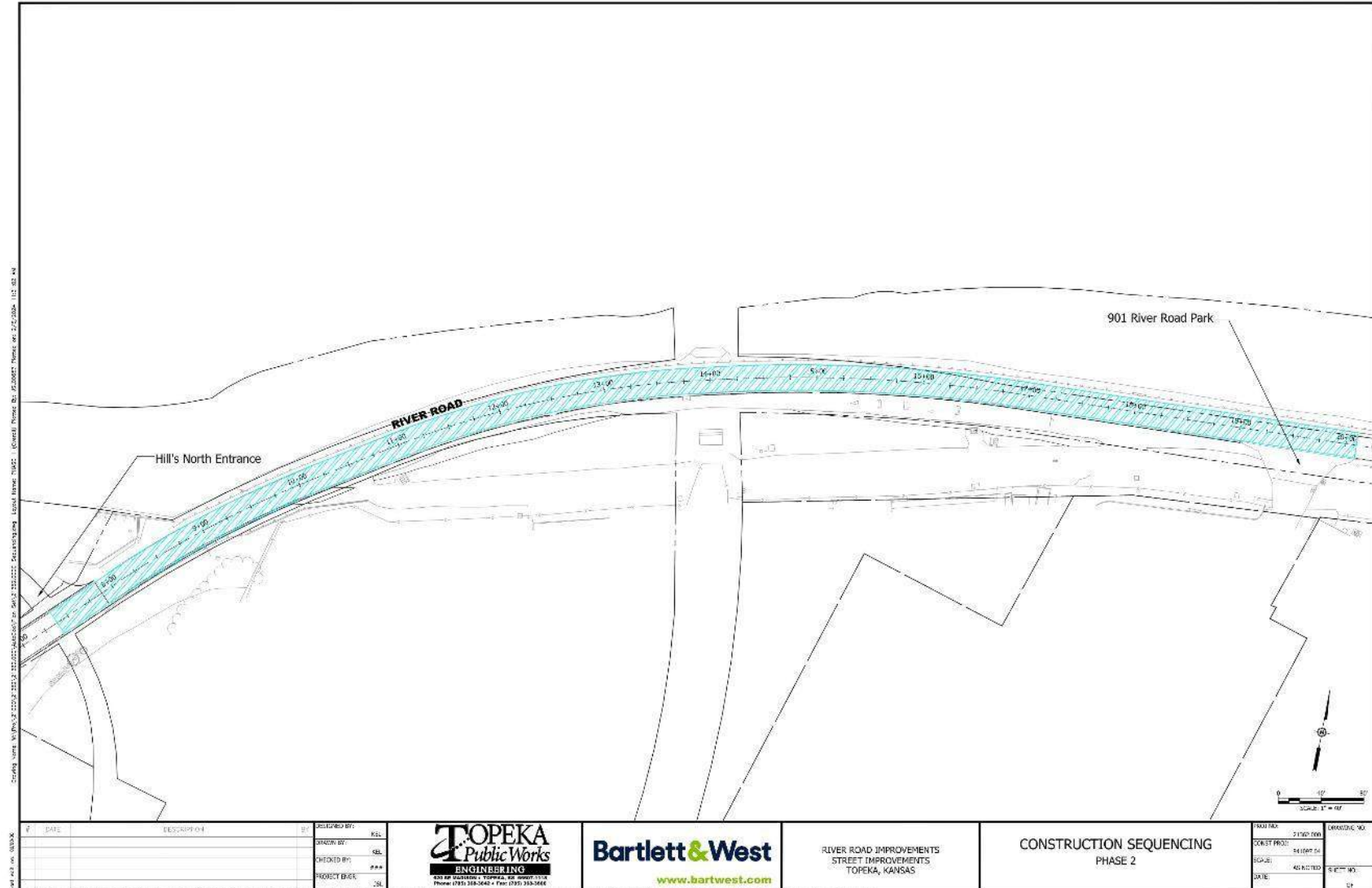
Construction: 2024

Phase I – 901 River Road Park to Emmett St.



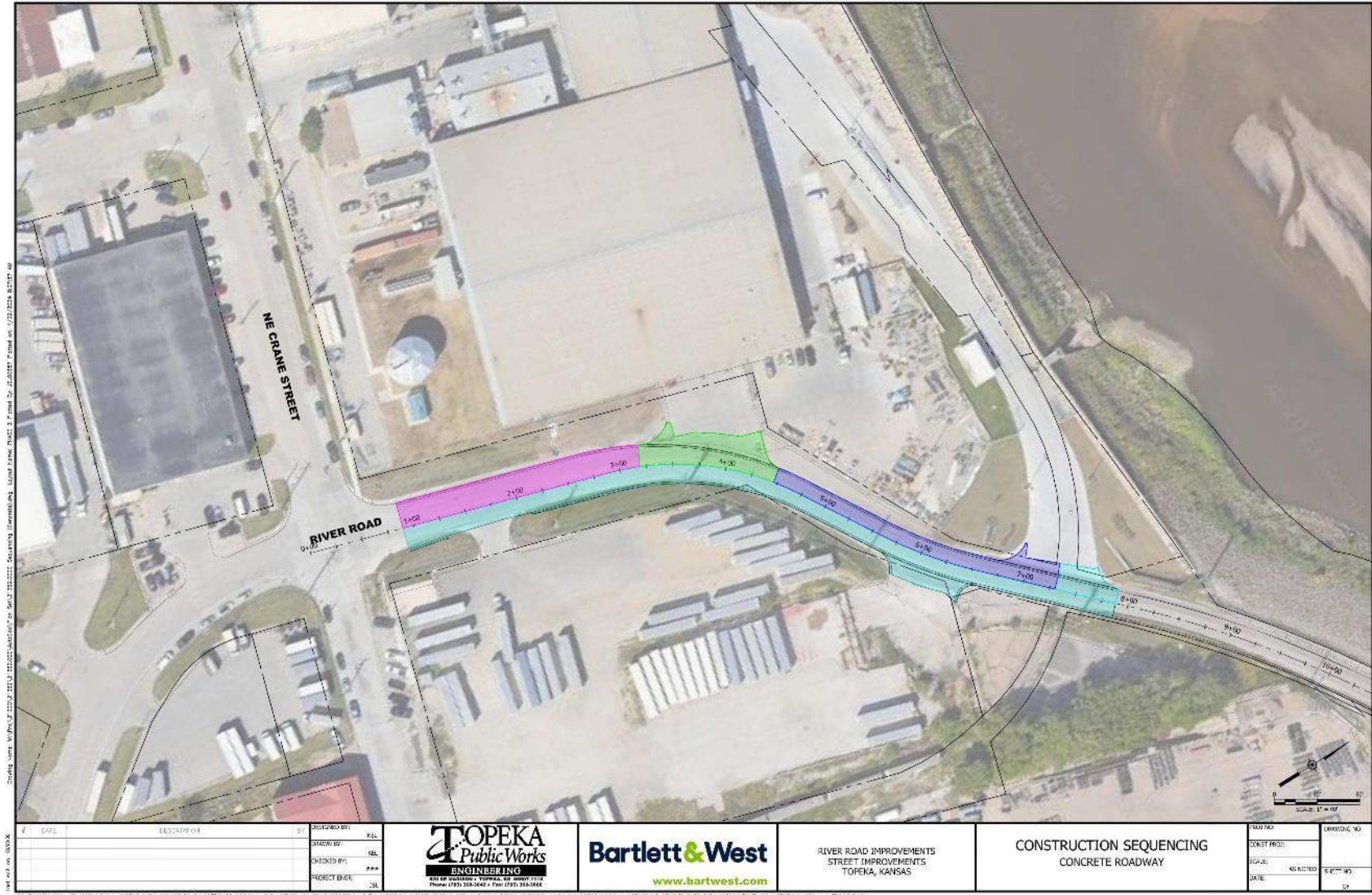
Construction: 2024

Phase II – Hill North Entrance to 901 River Road Park



Construction: 2024

Phase III - Crane St. to Hills North Entrance



Project Contacts

City of Topeka

River Road – Crane to Emmett

Lee Holmes, PE

(785) 368-3842

llholmes@topeka.org

Bartlett & West

River Road – Crane to Emmett

Jeff Lolley, PE

(785) 272-2252

jeff.lolley@bartwest.com

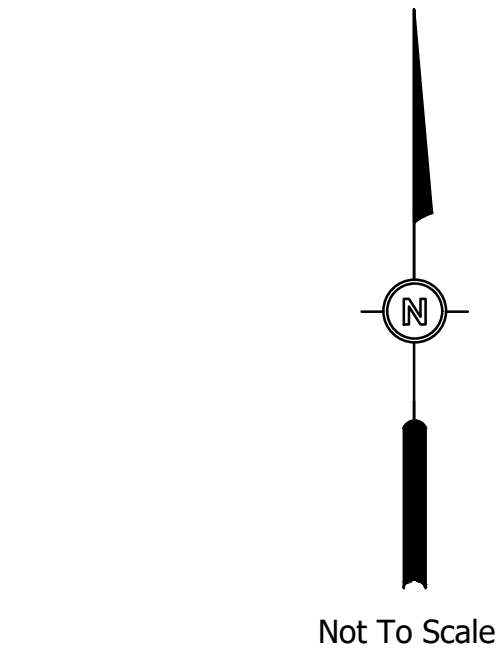
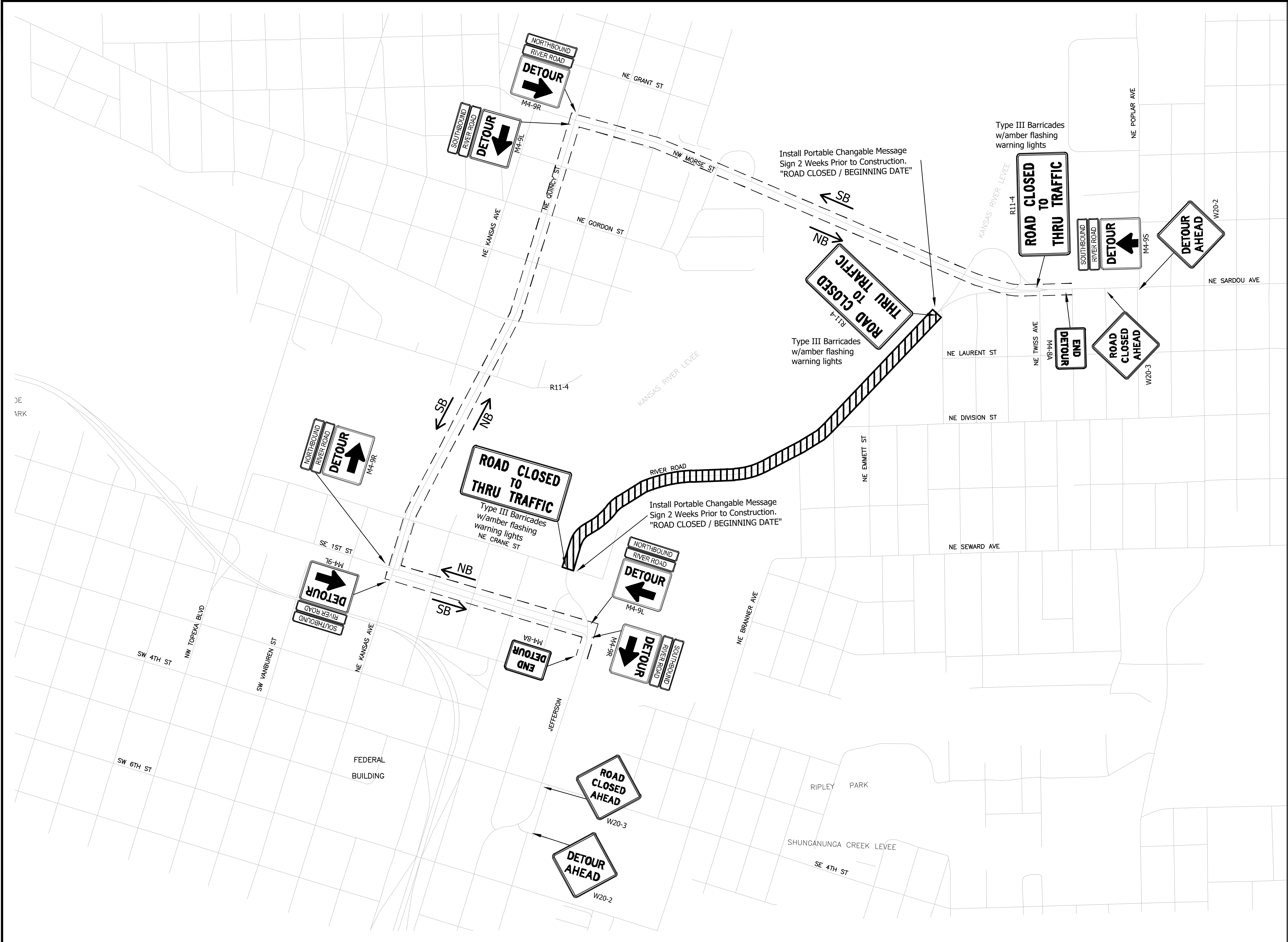


**Bartlett
& West**



Drawing Name: W:\Proj\210000\21362\21362.000\AutoCad\Plan Set\21362.000C_Detour.dwg Layout Name: Detour Plan Plotted By: JSL00657 Plotted on: 11/9/2023 9:44:04 AM

Last edit on: 09/09/00

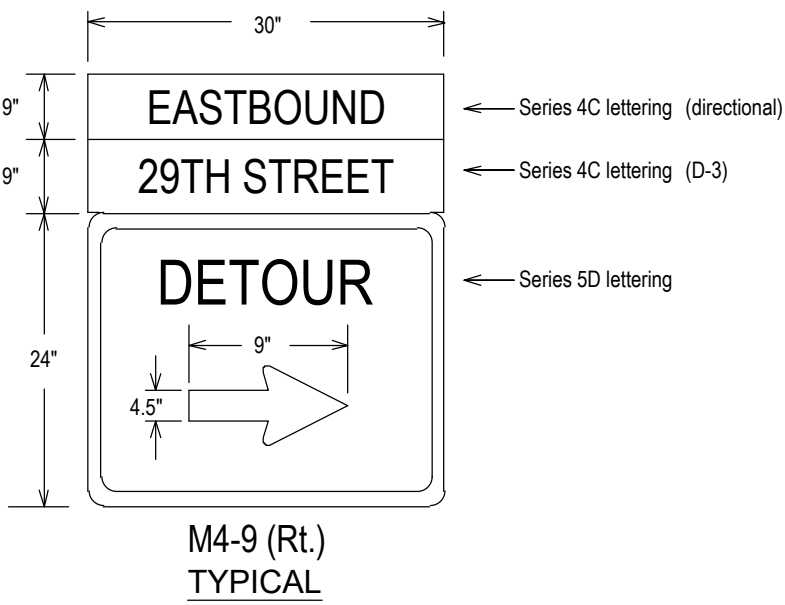


----- Detour Route

Detour Quantities

(For Information Only)

DIRECTIONAL	7 EACH
PORTABLE MESSAGE SIGN	2 EACH
TYPE III BARRICADES	5 EACH
D-3	7 EACH
M4-8A	2 EACH
M4-9L	3 EACH
M4-9R	3 EACH
M4-9S	1 EACH
R11-4	3 EACH
W20-2	2 EACH
W20-3	2 EACH



All traffic control devices shall conform to the M.U.T.C.D.

GENERAL NOTES:

- The contractor shall furnish and maintain all traffic control devices.
- All barricades shall be reflectorized and have amber flashing lights.
- Type III barricade placement for road closures shall be one barricade per driving lane closed.
- All traffic control devices shall conform to the Manual on Uniform Traffic Control Devices (M.U.T.C.D.) or current revision thereof.
- Channelizing devices shall be used to separate work zone from traveled way.
- Type III barricades shall be at each end of construction on Phase I and Phase II.

#	DATE	DESCRIPTION	BY

DESIGNED BY:	KEL
DRAWN BY:	KEL
CHECKED BY:	###
PROJECT ENGR:	JSL

TOPEKA
Public Works
ENGINEERING
620 SE MADISON • TOPEKA, KS 66607-1118
Phone: (785) 368-3842 • Fax: (785) 368-3806

Bartlett & West
www.bartwest.com

RIVER ROAD IMPROVEMENTS
STREET IMPROVEMENTS
TOPEKA, KANSAS

DETOUR PLAN

PROJ NO:	21362.000
CONST PROJ:	841097.04
SCALE:	AS NOTED
DATE:	NOV 2023

DRAWING NO:	62
SHEET NO:	62 OF 97