

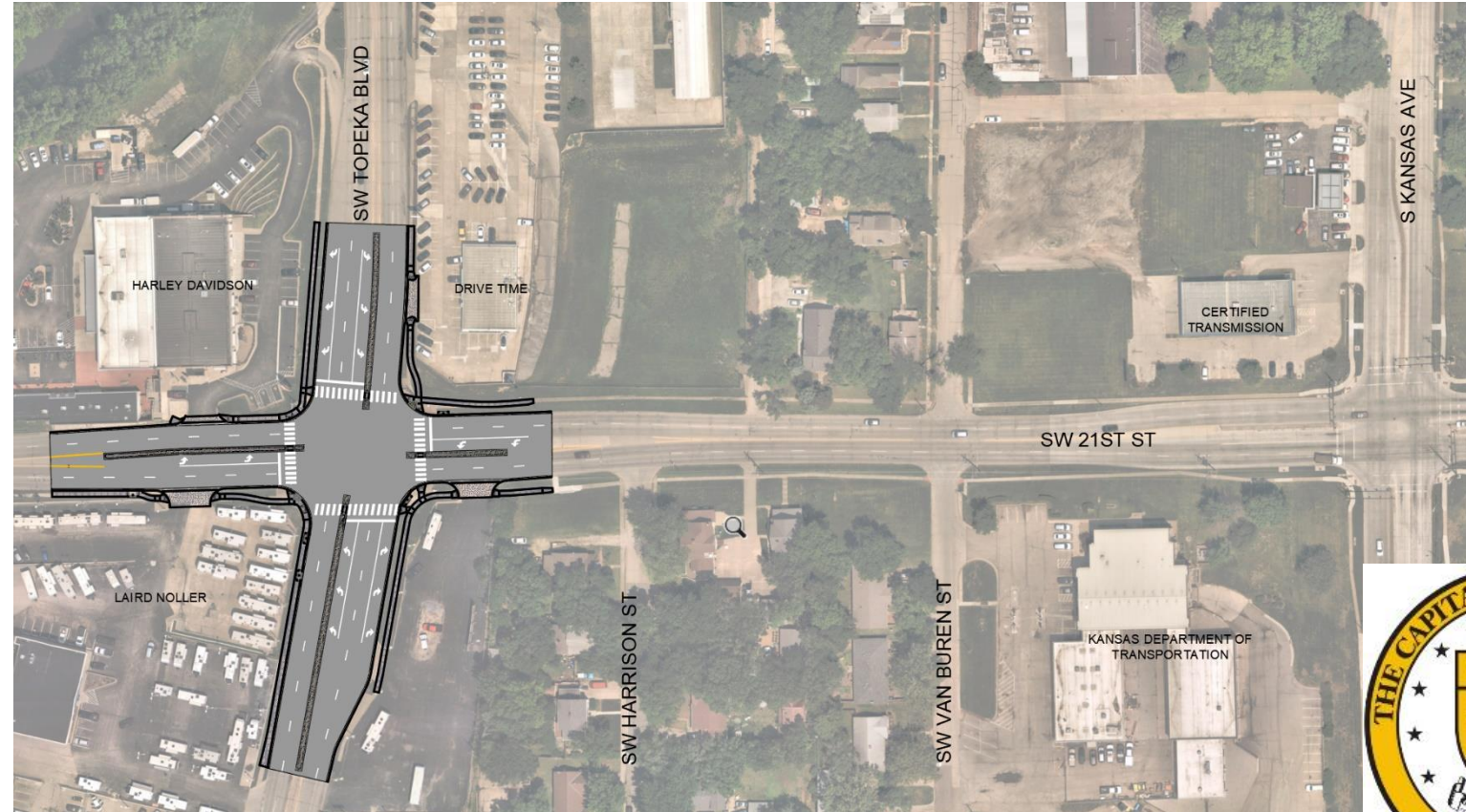
701045.00 SW Topeka Blvd & SW 21st Street Intersection

Roadway Improvements
Waterline Improvements
Storm Sewer Improvements
Sanitary Sewer Improvements



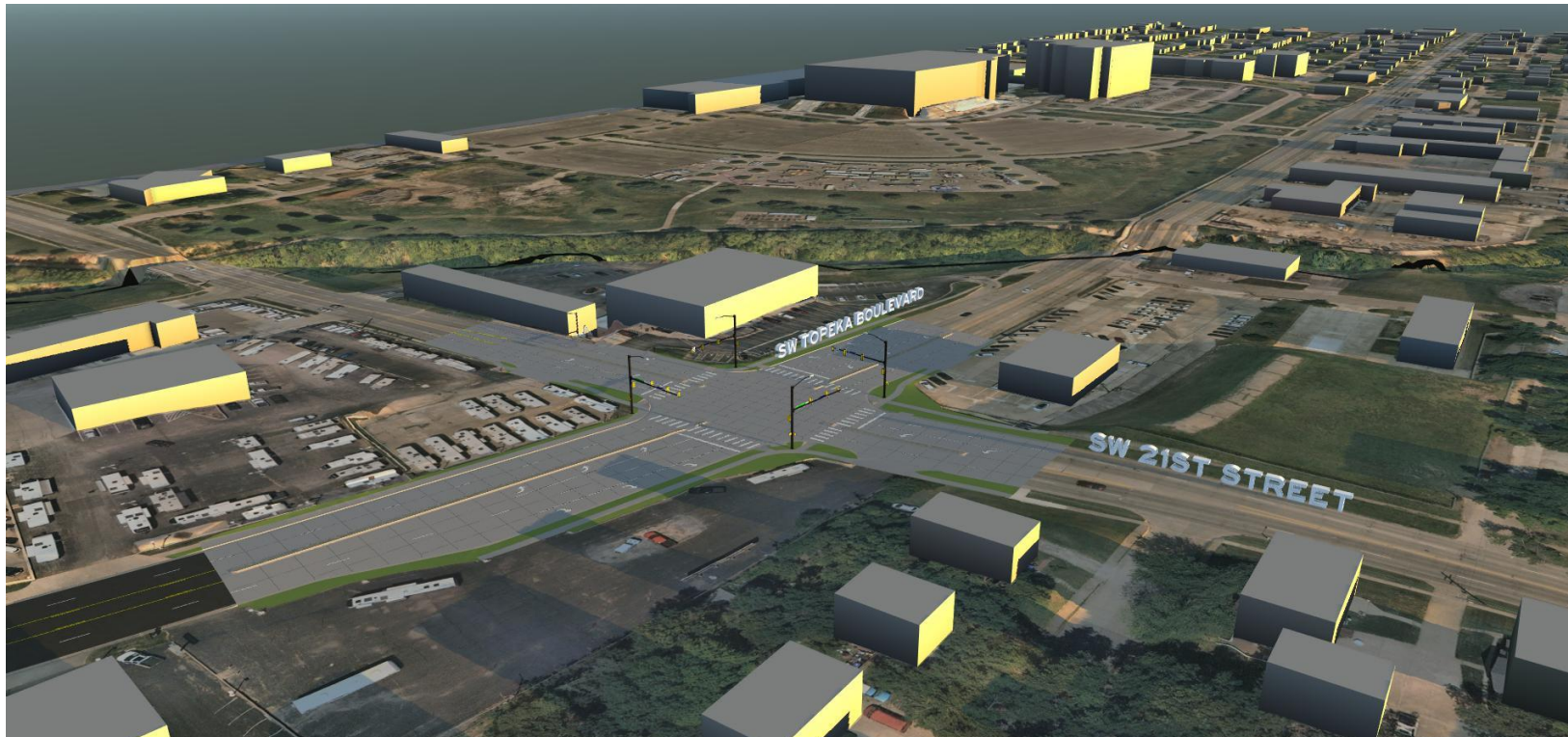
Project Location & Improvements

- Full Intersection Pavement Replacement
- Smoother Transition across 21st Street
- ADA Sidewalk Ramp Replacements at Intersection
- Utility Replacements
 - Watermain Replacement to Kansas Ave
 - Storm Sewer Replacement
 - Sanitary Sewer Replacement



Project Highlights — Intersection Pavement Improvements

- Pavement Replacement along Topeka Boulevard & 21st Street



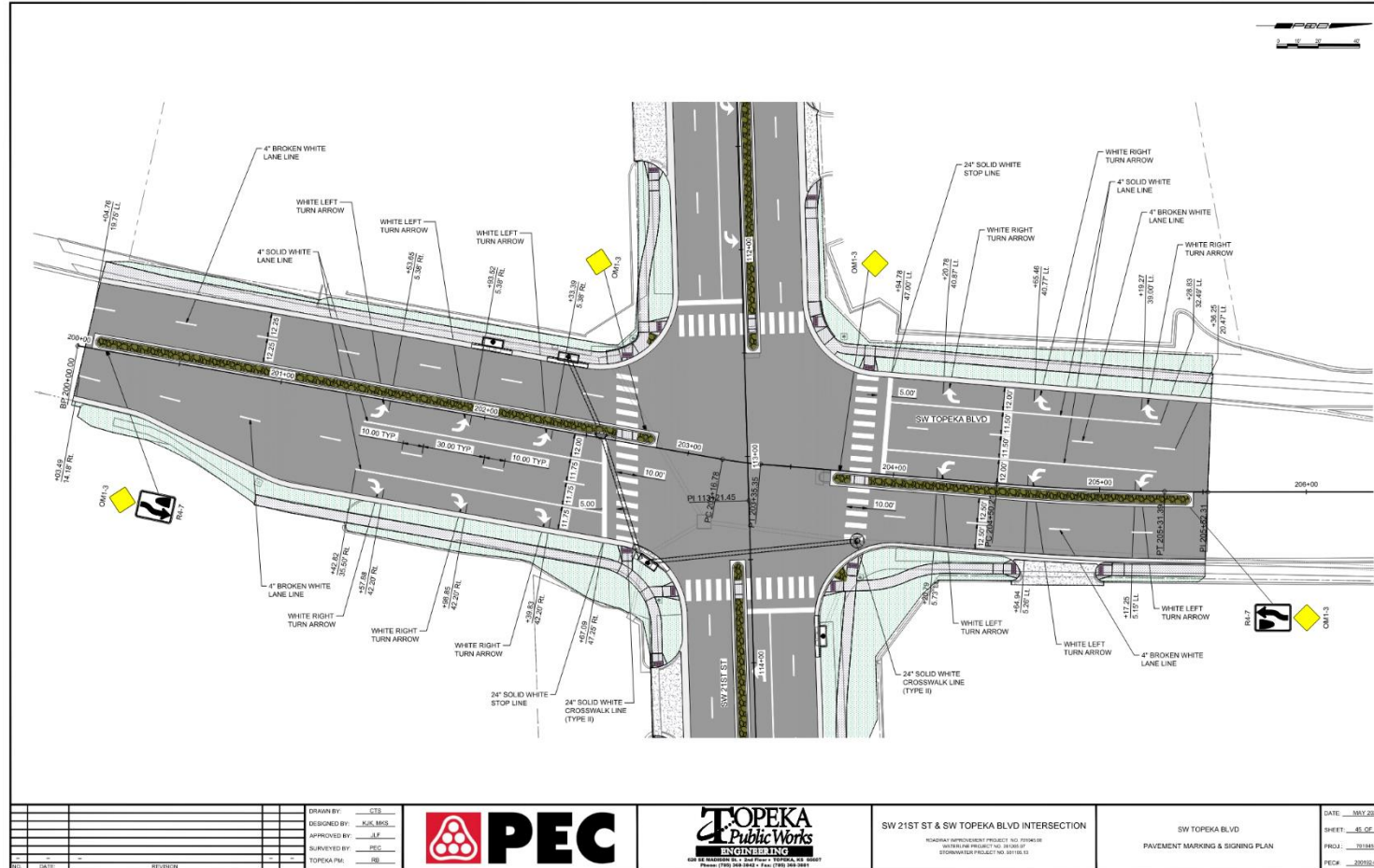
Project Highlights — Intersection Pavement Improvements

- Regrading to create a smoother transition along SW 21st Street when crossing Topeka Blvd.



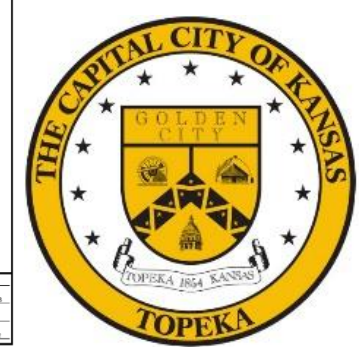
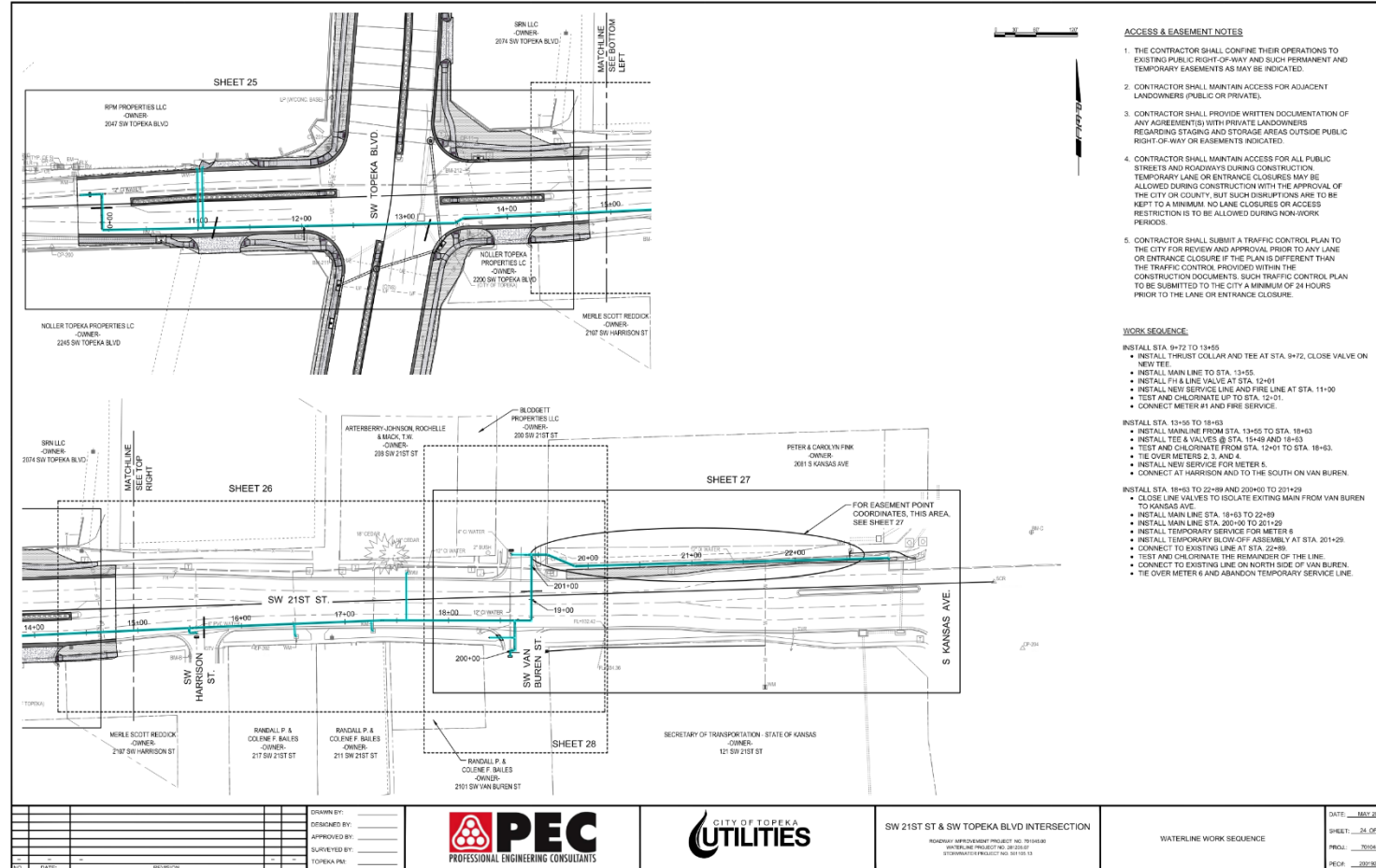
Project Highlights — Street & Storm Sewer Improvements

- Full Pavement Replacement with new Concrete Roadway
- Sidewalk and ADA Ramp Improvements
- Replacement of Storm Sewer System to assist with drainage off the Intersection



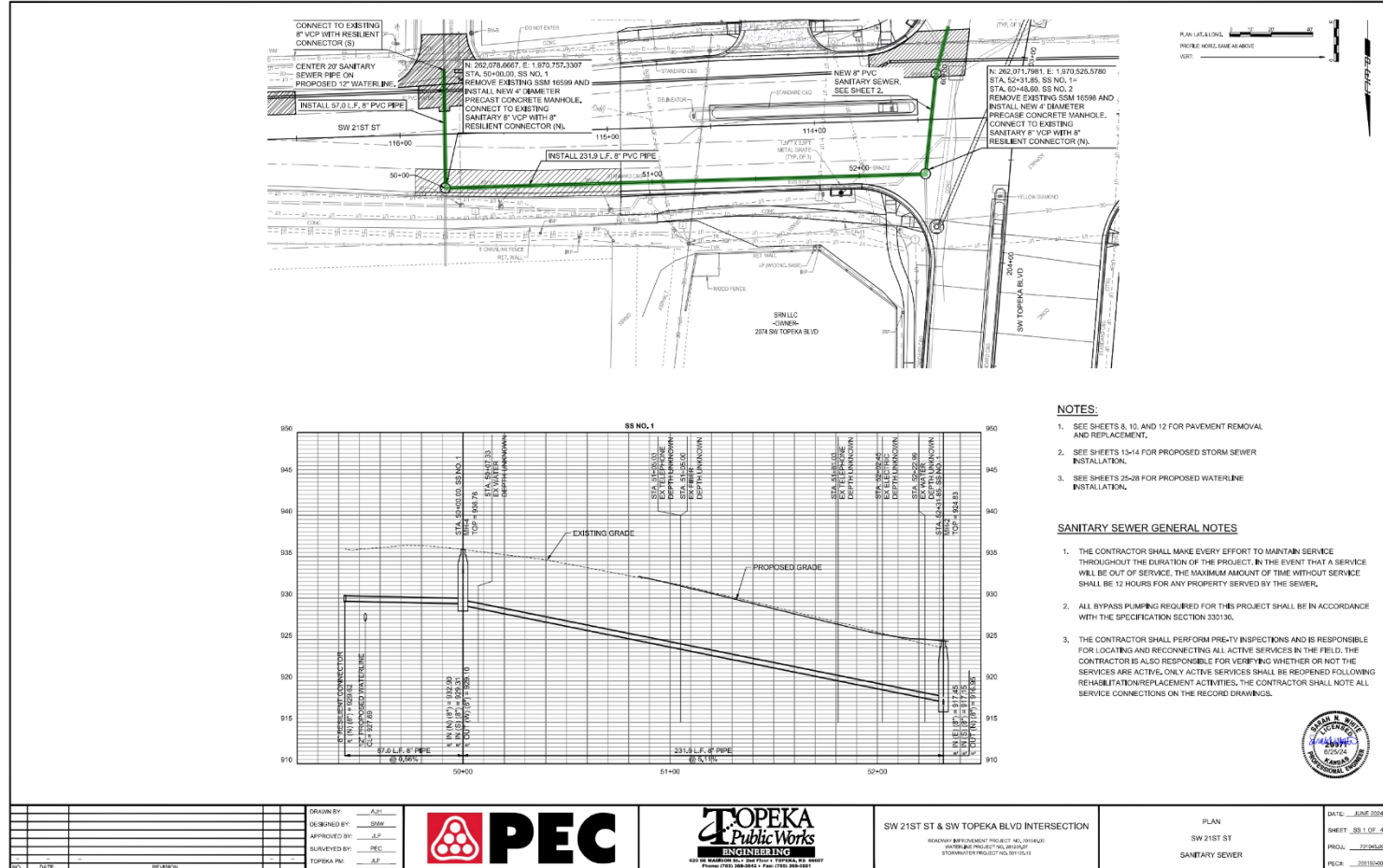
Project Highlights — Watermain Replacement

- Replacement of 12" Watermain along SW 21st Street from just west of Topeka Blvd. to Kansas Ave.

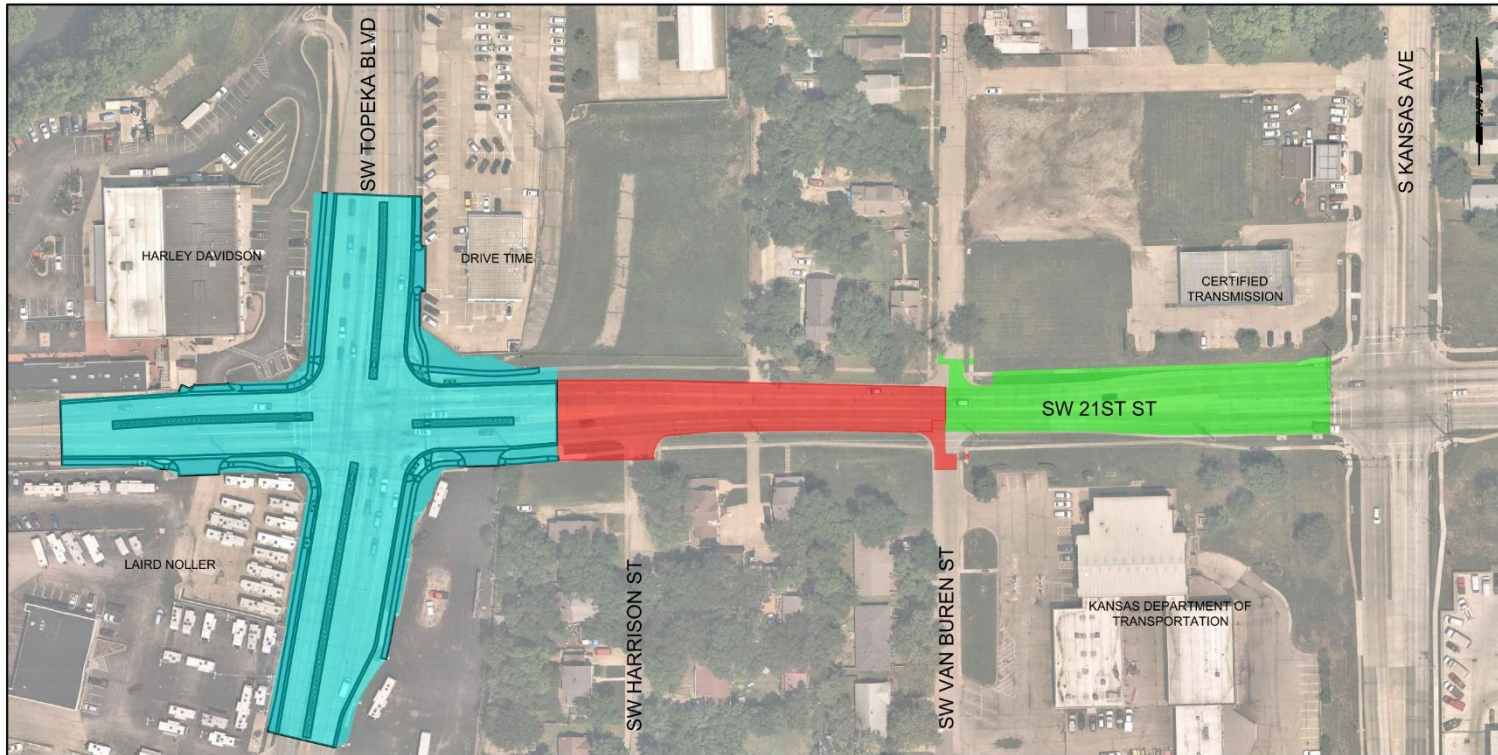


Project Highlights — Sanitary Sewer Replacement

- Replacement of deteriorated Sanitary Sewer system within Intersection and along SW 21st Street.



Construction Phasing



2024 Fall/Winter Construction Period

Anticipated for Construction to start work beginning of September and finish in December

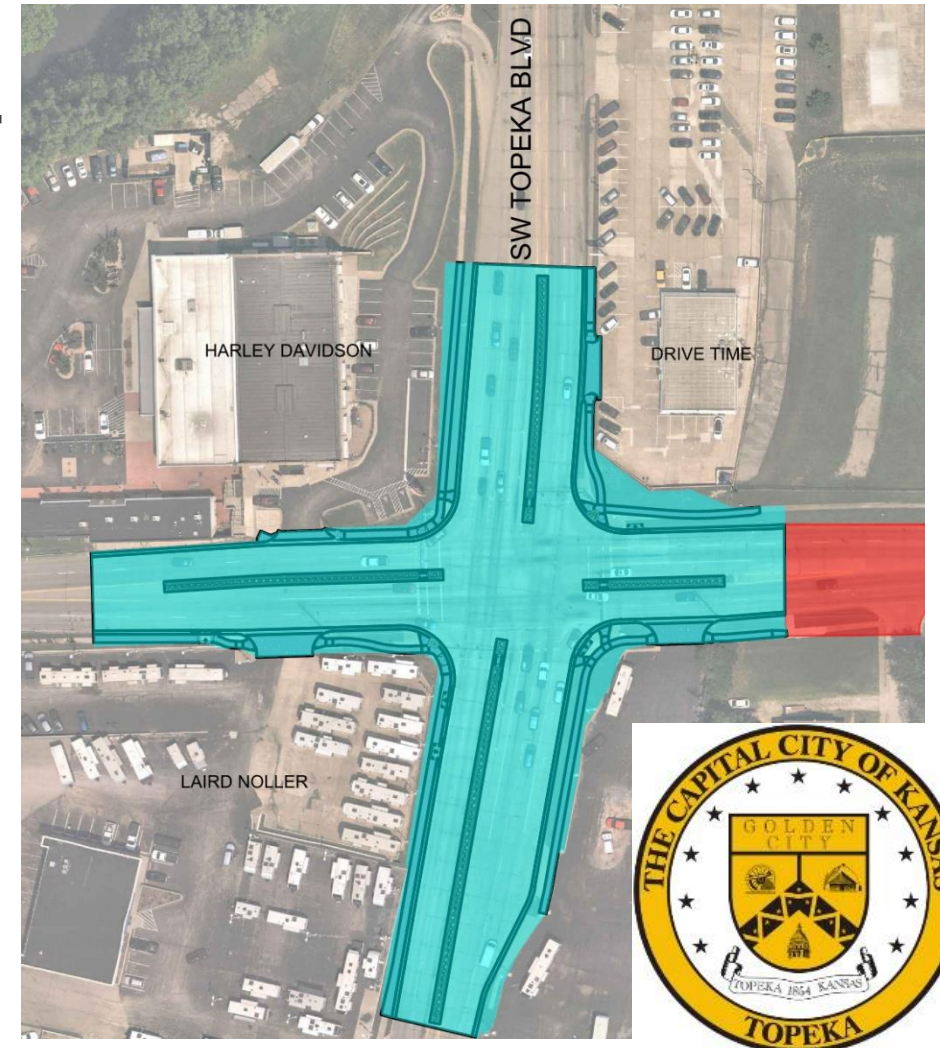


Construction – 09/24 – 12/24

Phase 1 – Intersection Reconstruction

Construct all 4 legs and the Intersection, including Roadway, Watermain, Storm Sewer, & Sanitary Sewer

The intersection will be FULLY CLOSED during construction.

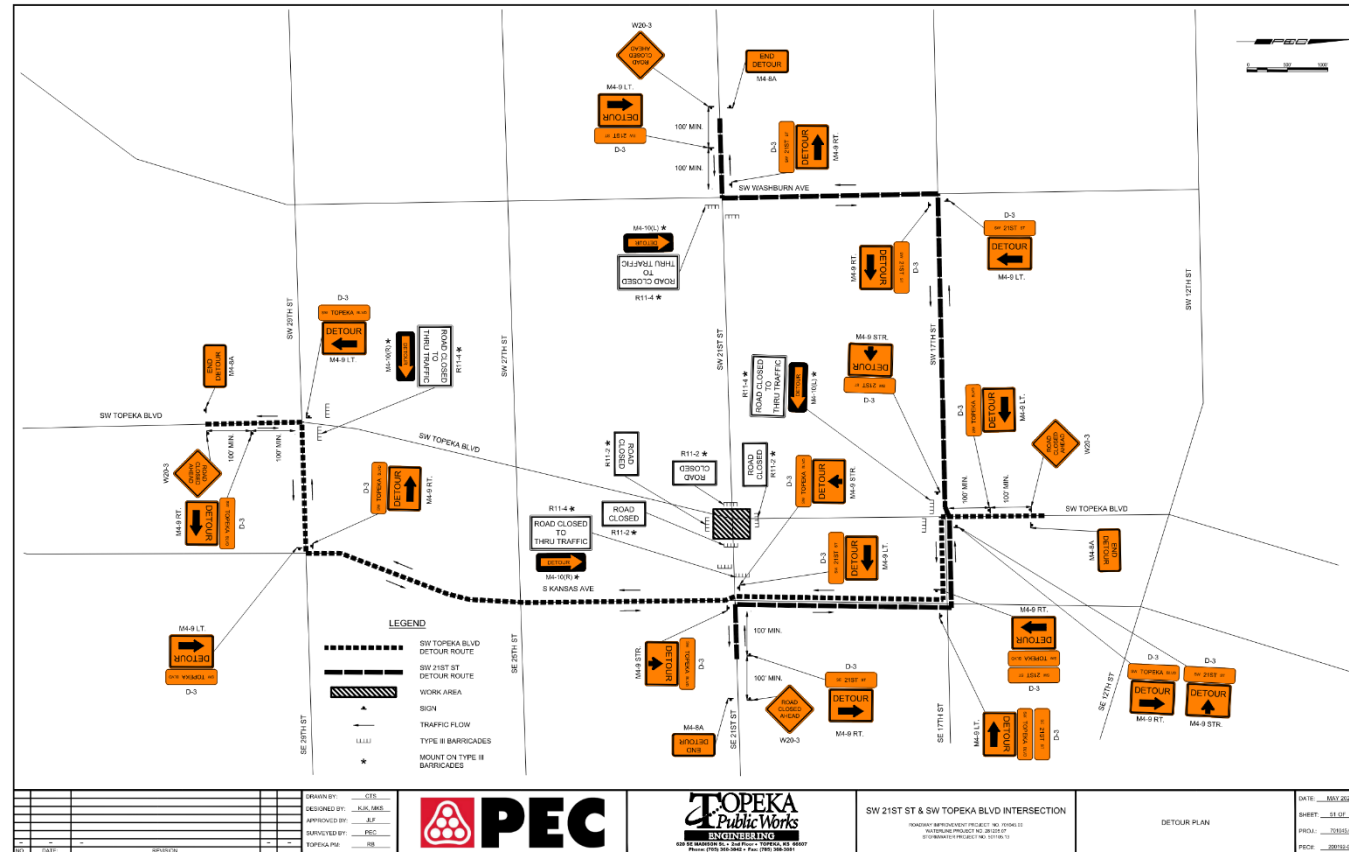


Construction — 21st & Topeka Intersection — FULL CLOSURE

Detour Route

Topeka Blvd. Traffic to use 29th St., Kansas Ave., & 17th St.

21st St. Traffic to use Washburn Ave., 17th St., & Kansas Ave.



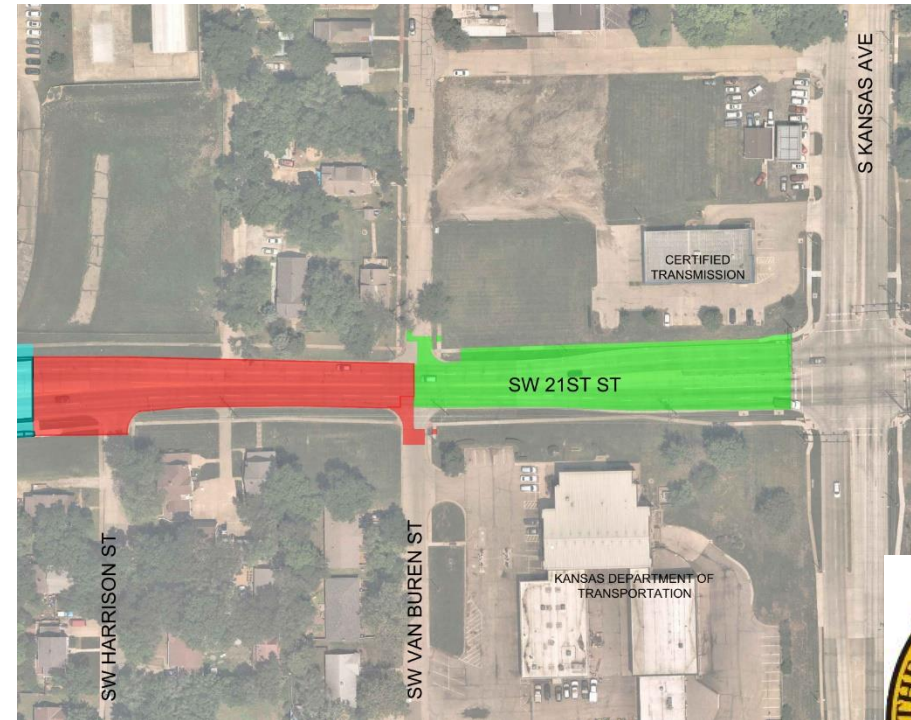
Construction — Phase 2 & Phase 3

Phase 2 – Harrison to Van Buren

Construct Waterline & Sanitary Sewer

Phase 3 – Van Buren to Kansas

Construct Waterline



Anticipated Construction to take place simultaneously as Phase 1

SW 21st Street will remain closed to thru Traffic utilizing the intersection detour that is in place.



Construction — Access to your Property

Access during Construction

- Construction will be limited to allow traffic to flow on SW 21st Street between Topeka Blvd & Kansas Ave.
- All properties will have access during the construction but may be limited at times.
- The Contractor will be responsible for notifying any adjacent properties affected by the Construction.



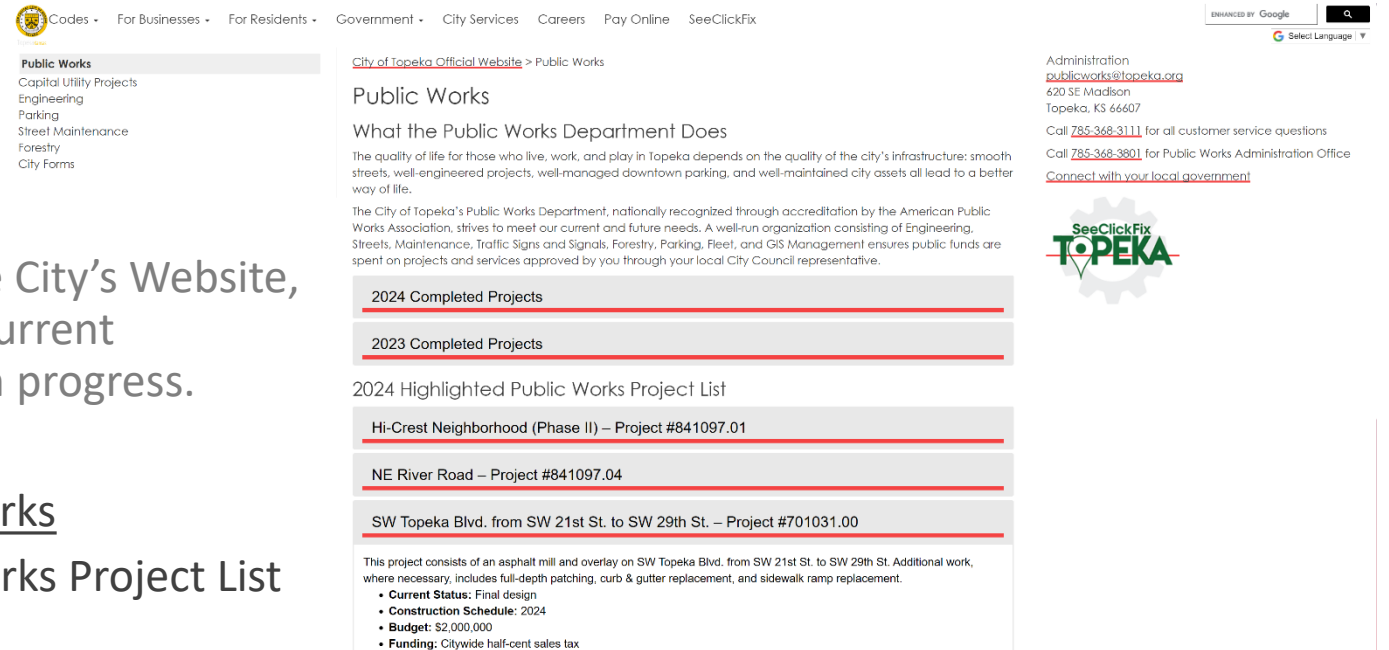
What's Next?

- Project Website

Access the Project Website through the City's Website, with updates to the project and most current construction schedule and construction progress.

www.Topeka.org/publicworks

Under the 2024 Highlighted Public Works Project List



The screenshot shows the City of Topeka's official website for Public Works. The navigation menu includes: Codes, For Businesses, For Residents, Government, City Services, Careers, Pay Online, and SeeClickFix. The main content area is titled "Public Works" and includes a description of the department's role in maintaining city infrastructure. It lists "2024 Completed Projects" and "2023 Completed Projects". A "2024 Highlighted Public Works Project List" is shown, with the following projects:

- Hi-Crest Neighborhood (Phase II) – Project #841097.01
- NE River Road – Project #841097.04
- SW Topeka Blvd. from SW 21st St. to SW 29th St. – Project #701031.00

Below the highlighted project list, there is a description of the SW Topeka Blvd. project: "This project consists of an asphalt mill and overlay on SW Topeka Blvd. from SW 21st St. to SW 29th St. Additional work, where necessary, includes full-depth patching, curb & gutter replacement, and sidewalk ramp replacement." The project details are:

- **Current Status:** Final design
- **Construction Schedule:** 2024
- **Budget:** \$2,000,000
- **Funding:** Citywide half-cent sales tax

On the right side of the screenshot, there is contact information for the Public Works Administration Office: "Administration publicworks@topeka.org, 620 SE Madison, Topeka, KS 66607. Call 785-368-3111 for all customer service questions. Call 785-368-3801 for Public Works Administration Office. Connect with your local government." There is also a "SeeClickFix TOPEKA" logo and a "THE CAPITAL CITY OF KANSAS GOLDEN CITY TOPEKA 1854 KANSAS" seal.

QUESTIONS??

Robert Bidwell, PE

City of Topeka – Project
Engineer

rbidwell@topeka.org

(785) 368-3842



Jason Fundis, PE

PEC Project Manager

Jason.Fundis@pec1.com

(785) 233-8300

