

701031.00
SW Topeka Blvd
29th Street – 21st Street

Roadway Improvements
Waterline Improvements
Stormwater Improvements



Project Location & Improvements

- Full Depth Concrete Pavement Repair
- Added Curb & Gutter to the street from SW 29th Street to SW 27th Street
- Intersection widening at SW 27th Street
- ADA Sidewalk Ramp Replacements
- Utility Replacements
 - Watermain Replacement from 27th Street to 24th Street
 - Storm Sewer Inlet Replacements



Project Highlights — Street Improvements

- Mill and Overlay the SW 29th Street Intersection



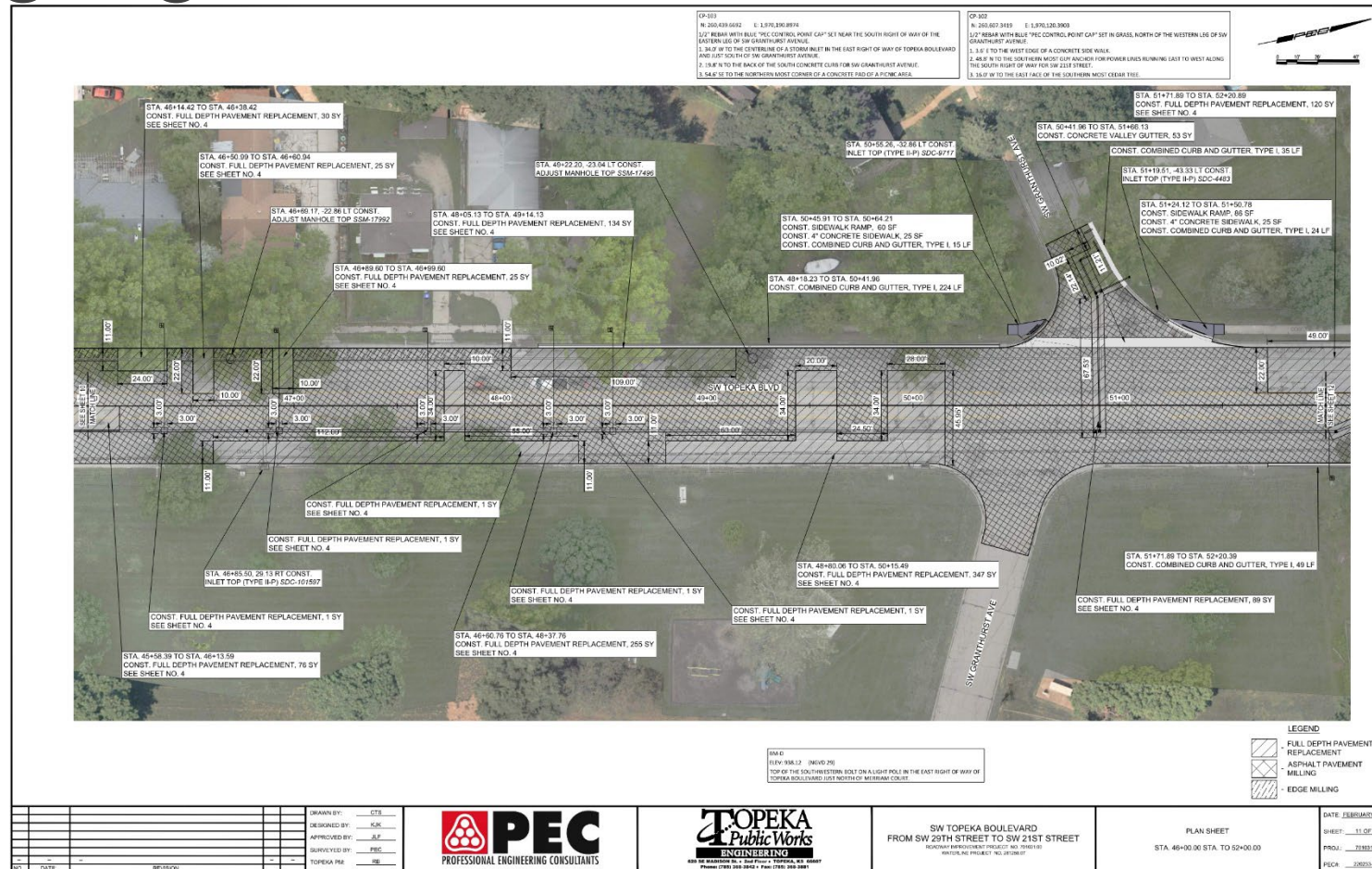
Project Highlights — Street Improvements

- Widening the SW 27th Street Intersection for dedicated Left Turn Lane



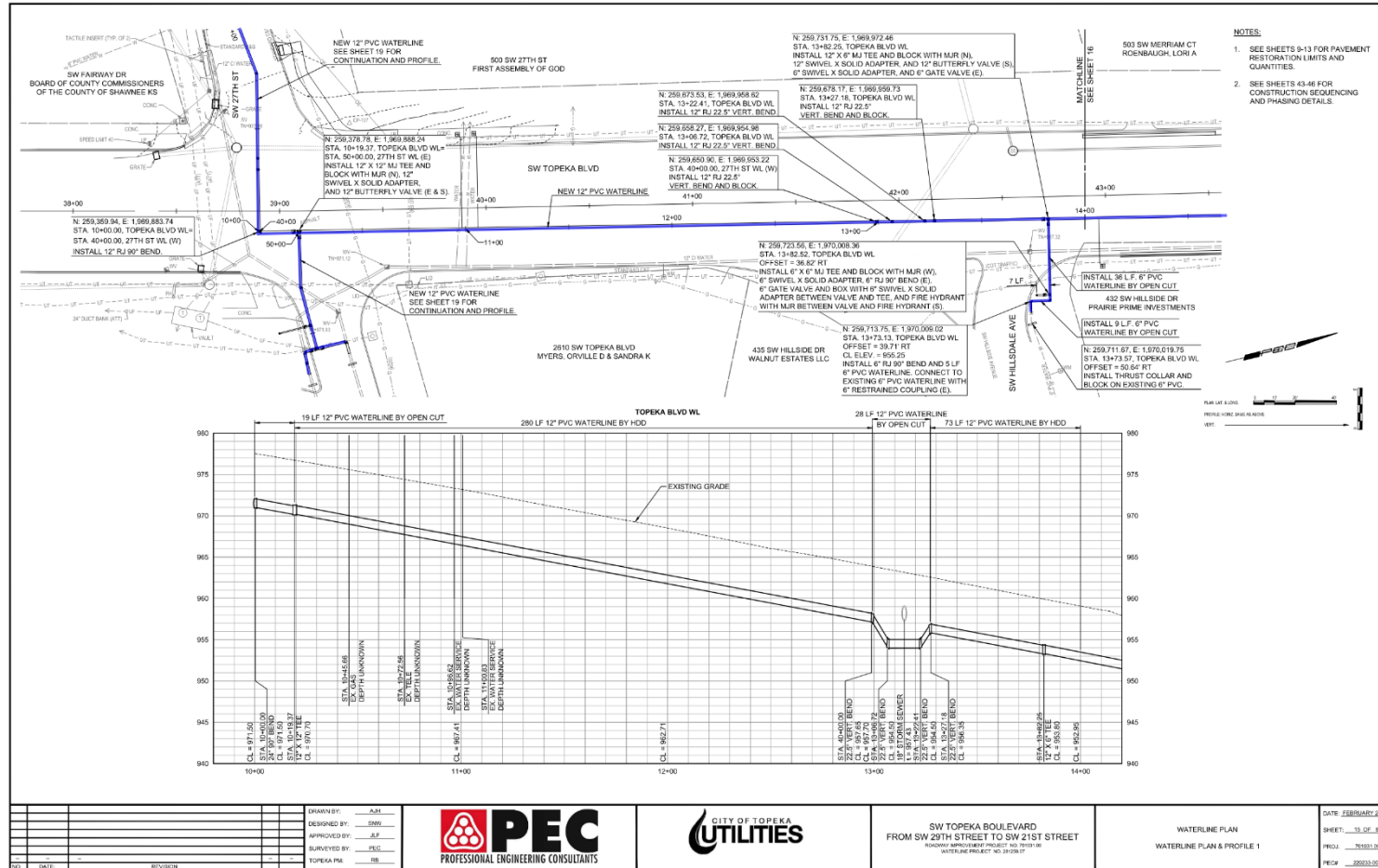
Project Highlights — Street Improvements

- Full Depth Patching, Curb & Gutter Replacement, and Sidewalk ADA Ramp Replacement



Project Highlights — Watermain Replacement

- Replacement of 12" Watermain along Topeka Blvd. from 24th to 27th



Construction Phasing



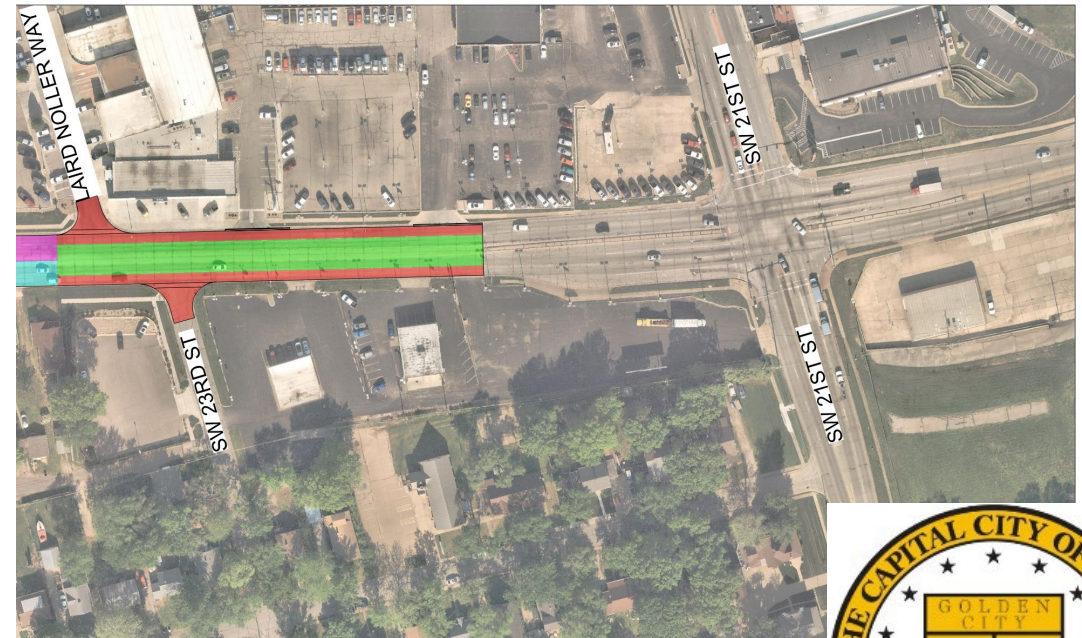
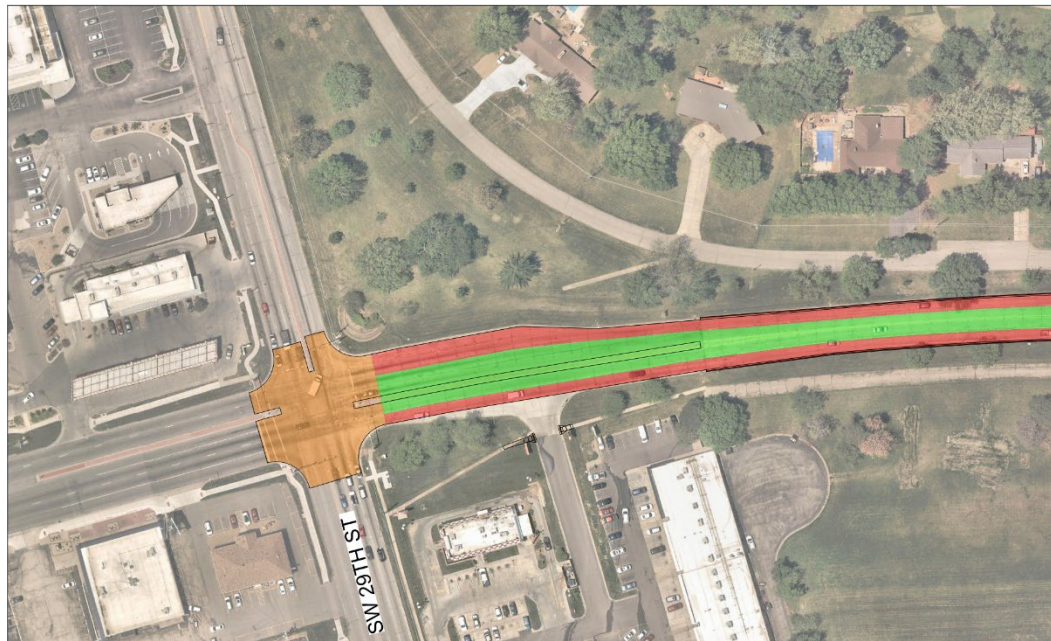
OUTSIDE LANES 29TH & TOPEKA INTERSECTION INSIDE LANES NORTHBOUND LANES SOUTHBOUND LANES

2024 Construction Period

Currently scheduled for Construction to start work beginning of June and finish in October



Construction — Outside Lanes

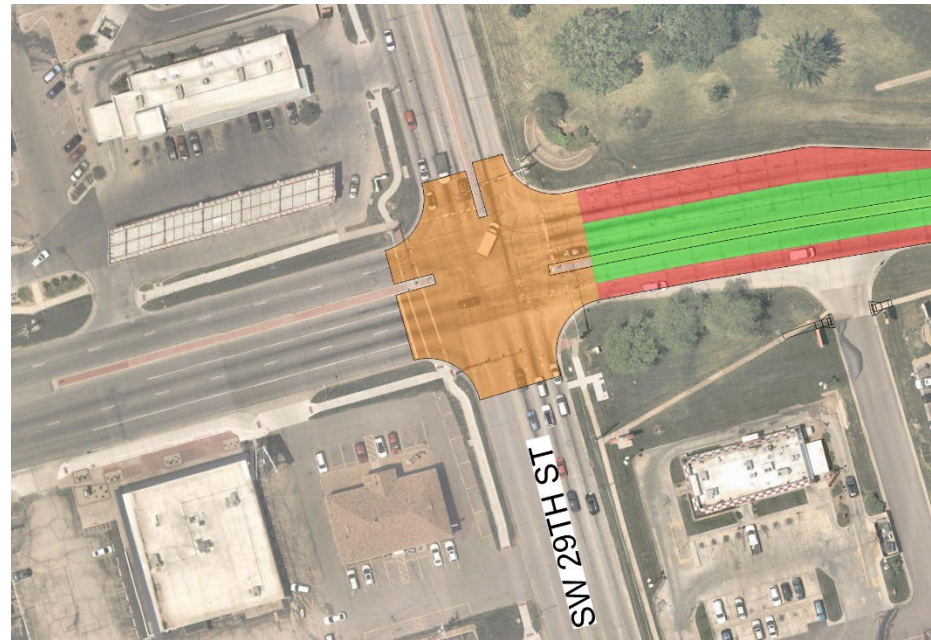


Anticipated Construction Period – June 3 to June 26

Construct Outside lanes near the Intersections to assist with shifting traffic in Future Phases



Construction — 29th Intersection



Anticipated Construction Period – June 26 to July 3

Construct Mill & Overlay of the 29th Street Intersection

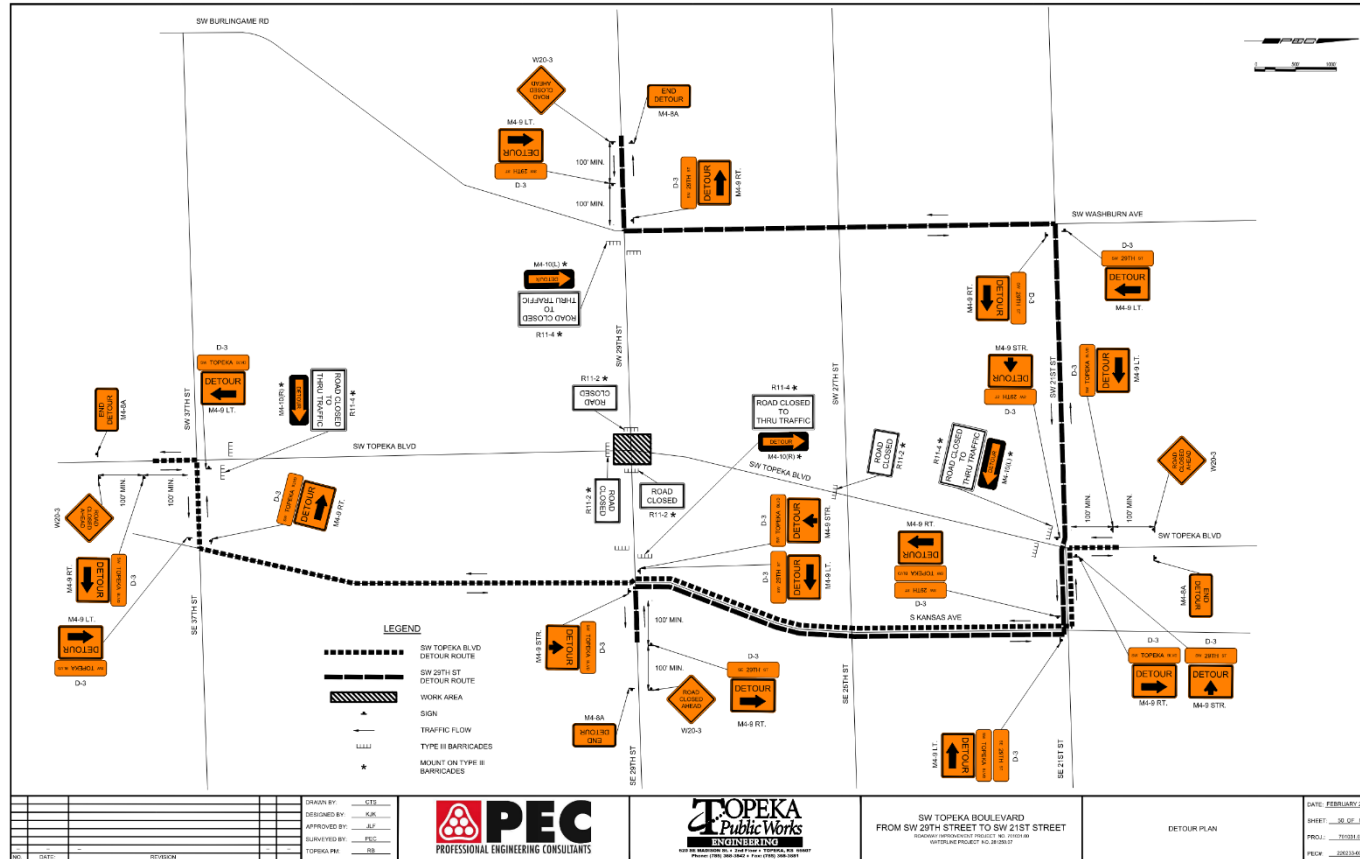


Construction — 29th & Topeka Intersection — FULL CLOSURE

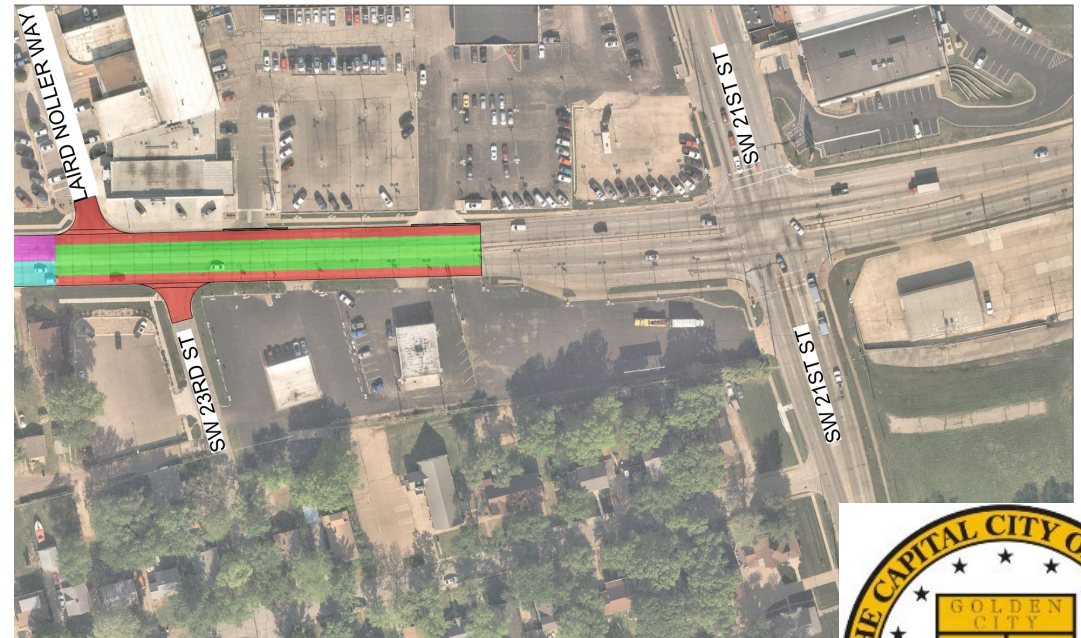
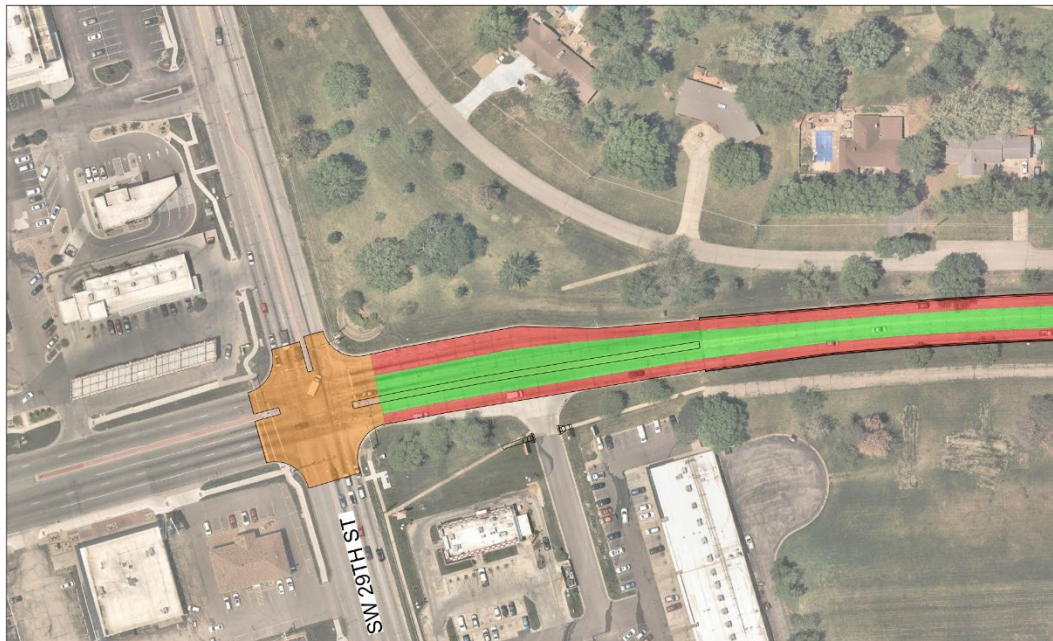
Detour Route

Topeka Blvd Traffic to use 37th St, Kansas Ave, & 21st St.

29th St Traffic to use Burlingame Rd / Washburn Ave, 21st St, & Kansas Ave.



Construction — Inside Lanes

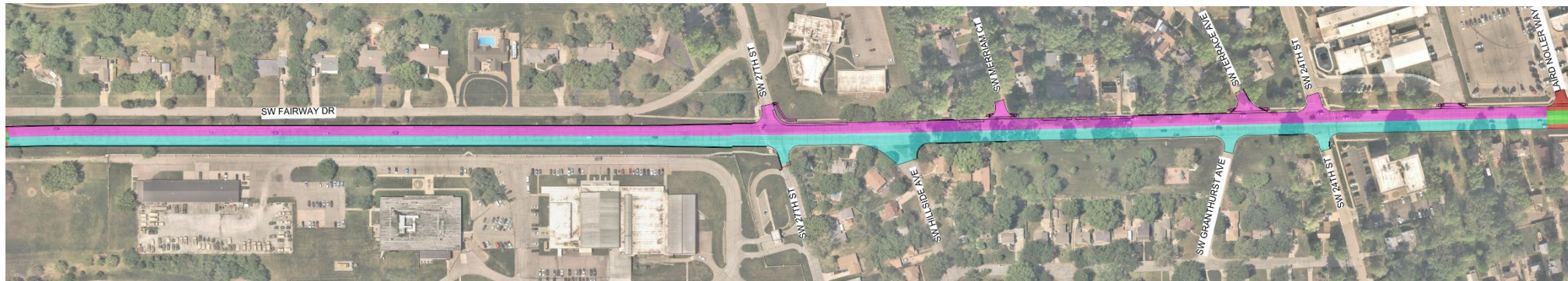


Anticipated Construction Period – July 8 to July 19

Construct Inside lanes near the Intersections to assist with shifting traffic in Future Phases



Construction — Northbound Lanes

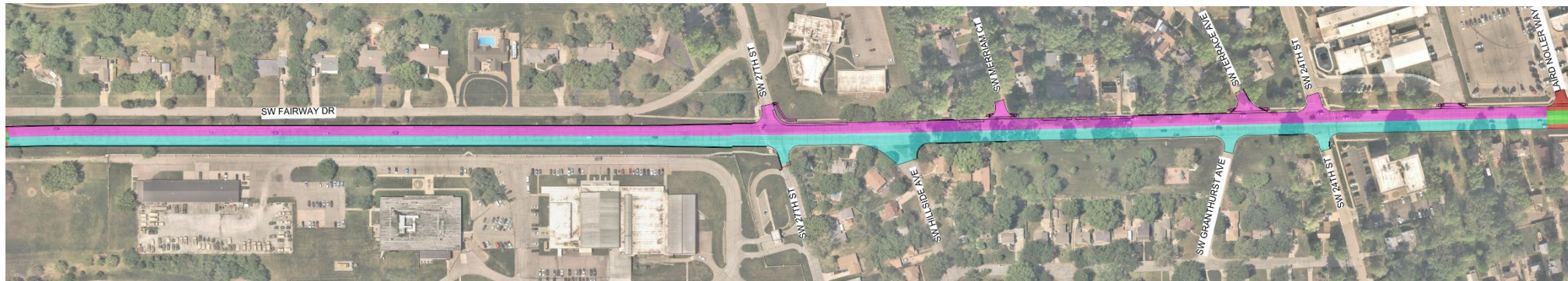


Anticipated Construction Period – July 22 to August 30

Construct Northbound lanes & Watermain between 29th St and 21st St



Construction — Southbound Lanes



Anticipated Construction Period – September 3 to October 31

Construct Southbound lanes & Watermain connections between 29th St and 21st St



Construction — Access to your Property

Access during Construction

- Construction will be limited to allow traffic to flow on one lane per each direction, with exception of the one-week full closure at the 29th St & Topeka Blvd Intersection.
- All properties will have access during the construction, but may be limited at times.
- Turning movements onto and off of Topeka Blvd will be limited at the specific locations.
- The Contractor will be responsible for notifying any adjacent properties affected by the Construction.



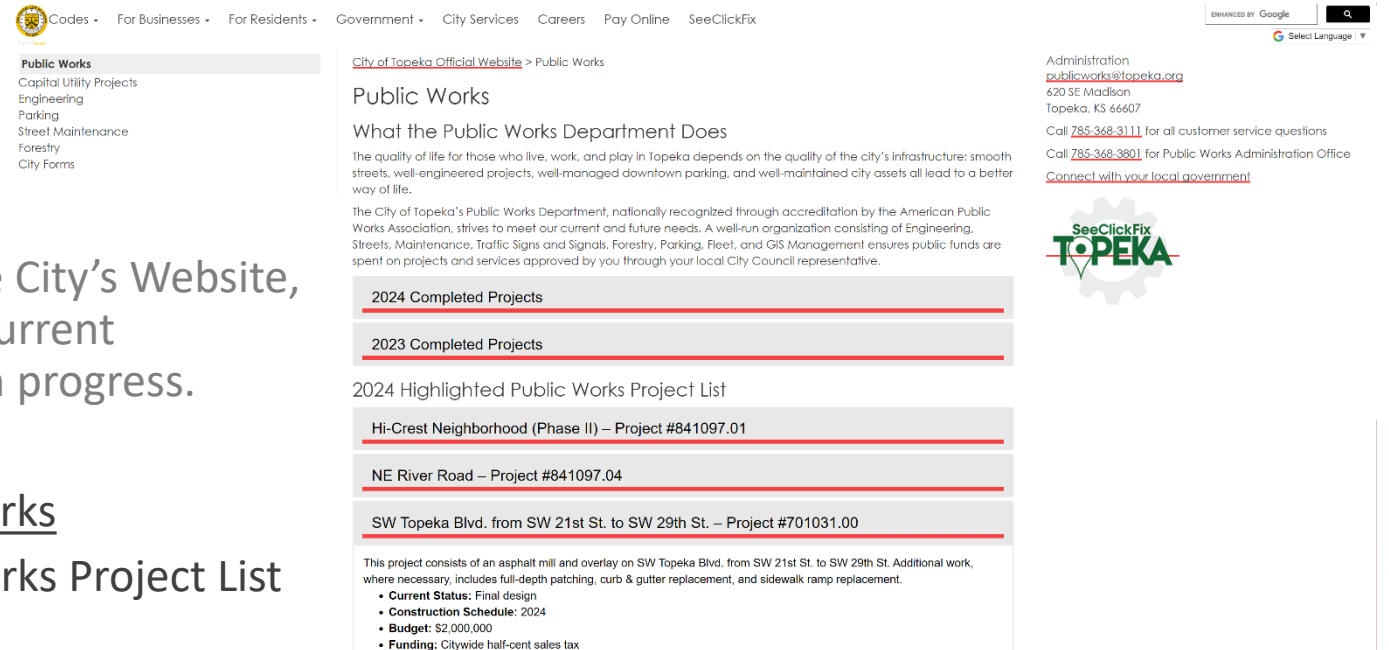
What's Next?

- Project Website

Access the Project Website through the City's Website, with updates to the project and most current construction schedule and construction progress.

www.Topeka.org/publicworks

Under the 2024 Highlighted Public Works Project List



The screenshot shows the City of Topeka's official website for Public Works. The navigation menu includes: Codes, For Businesses, For Residents, Government, City Services, Careers, Pay Online, and SeeClickFix. The main content area is titled "Public Works" and includes a description of the department's role in maintaining city infrastructure. It features a list of completed projects for 2024 and 2023, and a highlighted list of 2024 projects. The highlighted project is "SW Topeka Blvd. from SW 21st St. to SW 29th St. – Project #701031.00". A detailed description of this project is provided, including its current status (Final design), construction schedule (2024), budget (\$2,000,000), and funding source (Citywide half-cent sales tax). The website also includes contact information for the Public Works Administration Office and a "SeeClickFix TOPEKA" logo.



QUESTIONS??

Casey Bettis

Contractor – Bettis Asphalt & Construction

cbettis@bettisasphalt.com

(785) 817-9770



**BETTIS
ASPHALT**

Robert Bidwell, PE
City of Topeka – Project
Engineer

rbidwell@topeka.org

(785) 368-3842



Jason Fundis, PE

PEC Project Manager

Jason.Fundis@pec1.com

(785) 233-8300

