

TRAFFICWAY IMPROVEMENT PROJECT 841060.06 & 841046.00
SHERWOOD PARK NEIGHBORHOOD



Know what's below. Call 811 before you dig
or visit us at www.kansasonecall.com

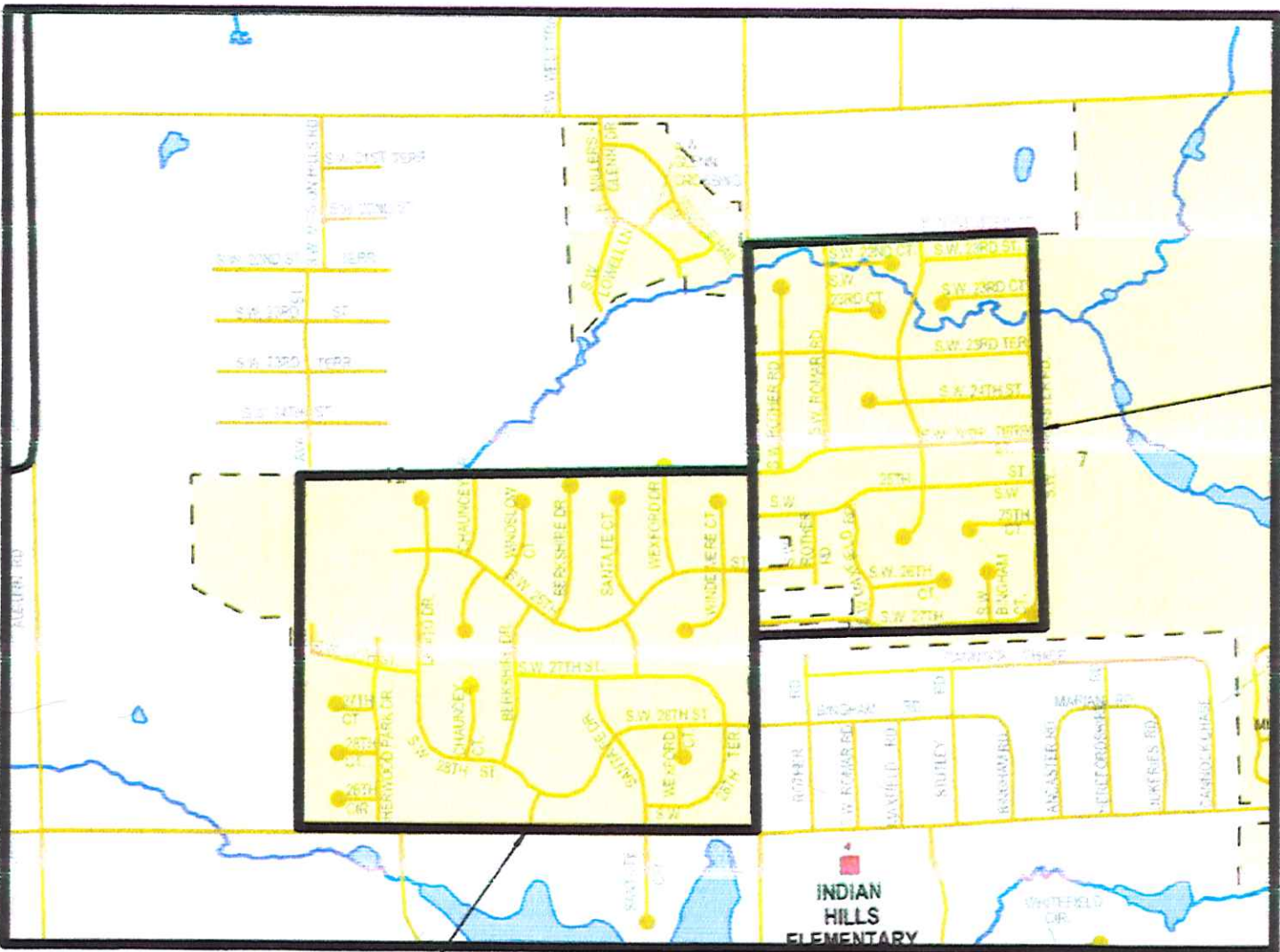
"Kansas One-Call" is the Underground Utility Notification center for the State of Kansas. Through this facility, you can notify operators of underground facilities of proposed excavations to request that the underground facilities be marked before you dig.

Kansas Statute annotated #66-1801 through #66-1815 requires anyone who engages in any type of excavation to provide advance notice of at least two full working days, but not more than 15 calendar days, excluding weekends and holidays.

The person who is doing the work is responsible for calling Kansas One-Call. If the owner contracts with a professional excavator to do the excavation, then the professional excavator is responsible for calling Kansas One-Call.

The service provided by Kansas One-Call to excavators is free of charge.

Call 785-368-3111 for emergencies with City of Topeka utilities.



INDIAN CREEK NEIGHBORHOOD

SHERWOOD PARK NEIGHBORHOOD



INDEX OF SHEETS

1	TITLE SHEET
2-6	PLAN AND QUANTITY SHEETS
7-10	CONSTRUCTION DETAIL SHEETS

QUANTITY NOTES

- 1) EXISTING PAVEMENT SECTION ASSUMED TO BE APPROXIMATELY 8" OF ASPHALTIC CONCRETE ON PREPARED SUBGRADE.
- 2) ASPHALT PAVEMENT PATCHING WORK SHALL INCLUDE REMOVAL OF EXISTING PAVEMENT SECTION AND EXISTING SUBGRADE, PLACEMENT OF 6" OF AGGREGATE BASE (QUANTIFIED PER TON), AND PLACEMENT OF 6" OF BASE ASPHALT (QUANTIFIED PER TON).
- 3) SUBGRADE REMEDIATION QUANTIFIED AS UNCLASSIFIED EXCAVATION AND AGGREGATE BASE - TYPE AB-3. THIS WORK SHALL INCLUDE EXCAVATION OF AN ADDITIONAL 6" OF UNSUITABLE SUBGRADE (BEYOND WHAT IS REQUIRED FOR ASPHALT PAVEMENT PATCHING) AND IS TO BE REPLACED WITH 6" OF AGGREGATE BASE. AREAS OF POOR SUBGRADE DETERMINED BY SURFACE EVALUATION. ACTUAL DEPTH AND LOCATION TO BE MEASURED AND VERIFIED BY THE INSPECTOR ON SITE. ANY UNDERRUN OR OVERRUN OF UNCLASSIFIED EXCAVATION AND AGGREGATE BASE - TYPE AB-3 WILL BE COMPENSATED AT THE CONTRACT UNIT PRICES.
- 4) RADIAL ADA RAMPS TO BE REPLACED WITH DIRECTIONAL PERPENDICULAR ADA RAMPS. AT 4 WAY INTERSECTIONS, A TOTAL OF 8 RAMPS SHALL BE CONSTRUCTED. AT 3 WAY INTERSECTIONS, A TOTAL OF 2 RAMPS SHALL BE CONSTRUCTED.
- 5) ASPHALT CRACK REPAIR QUANTIFIED PER TON OF ASPHALT ASSUMING 4" WIDHT X 6" DEPTH X LENGTH OF CRACK. ACTUAL QUANTITY OF MATERIAL TO BE VERIFIED IN THE FIELD. COSTS ASSOCIATED WITH PLUNGE MILL CONSIDERED SUBSIDIARY TO *ASPHALT CRACK REPAIR.
- 6) REMOVAL AND REPLACEMENT OF CURB & GUTTER MAY REQUIRE THE REMOVAL AND REPLACEMENT OF 6" OF PAVEMENT REPLACEMENT ADJACENT TO THE CURB & GUTTER, AS DIRECTED BY INSPECTOR. REMOVAL AND REPLACEMENT OF PAVEMENT CONSIDERED SUBSIDIARY TO *REMOVE & REPLACE LAYBACK CURB & GUTTER TYPE IV.
- 7) ALL CONSTRUCTION METHODS AND MATERIALS USED IN THE CONSTRUCTION OF THE IMPROVEMENTS COVERED BY THESE PLANS SHALL BE IN ACCORDANCE WITH THE STANDARD TECHNICAL SPECIFICATIONS AND ADDENDUM'S TO THE (STS) ON FILE IN THE OFFICE OF THE CITY ENGINEER, CITY OF TOPEKA, KANSAS.

RECAPITULATION OF QUANTITIES

Rehab Description	Quantity	Units
Project #841060.06 Pay Items		
Cold Milling	70378.3	S.Y.
2" Asphaltic Concrete	70378.3	S.Y.
Asphalt Crack Repair	428.0	TONS
Asphalt Pavement Patching	2011.0	TONS
6" Aggregate Base - Type AB-3	2323.6	TONS
Unclassified Excavation	75.0	C.Y.
Remove and Replace 8" Concrete Pavement (Spandrel)	64.7	S.Y.
Remove and Replace Concrete Valley Gutter	88.0	S.Y.
4" Concrete Sidewalk, 4' Wide	2124.0	S.F.
Remove and Replace Sidewalk Ramp	5426.0	S.F.
Traffic Control	1.0	L.S.
Discharge Pipe Relocate	6.0	EACH
Project #841046.00 Pay Items		
Remove and Replace Curb & Gutter (Type IV)	4575.0	L.F.

CITY OF TOPEKA, KANSAS

DEPARTMENT OF PUBLIC WORKS - ENGINEERING DIVISION

RELEASED FOR CONSTRUCTION

CITY ENGINEER

2/19/2020
DATE

ATTEST:

CITY CLERK

2/20/2020
DATE

UTILITY OWNERS
LOCATION MAP
SHEET INDEX
QUANTITIES

DATE: FEBRUARY 2020
SHEET: 1 OF 10
PROJ.: 841060.06
841046.00

DATE	
BY	
REFERENCES NOTED	
REFERENCES CHECKED	

UTILITY CONTACTS:

CABLE TV
COX COMMUNICATIONS
931 SW HENDERSON RD.
TOPEKA, KS 66615
GLENN CALHOUN
(785)215-6705
(785)207-1693
GLENN.CALHOUN@COX.COM

ELECTRIC
EVERGY
PO BOX 889
4001 NW 14TH ST.
TOPEKA, KS 66603
ALLYSON WETTER
(785)575-1221
(785)562-7702
ALLYSON.WETTER@EVERGY.COM

FIBER OPTIC - CITY OF TOPEKA
CITY OF TOPEKA, INFO. TECH.
620 SE MADISON ST., 3RD FLOOR
TOPEKA, KS 66603
MARK BISWELL
(785)368-3718
MBISWELL@TOPEKA.COM

FIBER OPTIC - CENTURYLINK CLEC
CENTURYLINK CLEC
100 CENTURYLINK DR.
MONROE, LA 71203
KYLE TOSTENSON
(318)417-2768
KYLE.TOSTENSON@CENTURYLINK.COM

FIBER OPTIC - USD 501
USD 501, INFO. TECH.
1900 SW HOPE ST.
TOPEKA, KS 66604
JIM ROUSSEAU
(785)438-4750
JROUSSEAU@TPS501.ORG

FIBER OPTIC - KSFIBERNET
KANSAS FIBER NETWORK LLC
10875 BENSON, SUITE 250
OVERLAND PARK, KS 66210
BRAD BURGER
(913)213-2937
BBURGER@KSFIBER.NET

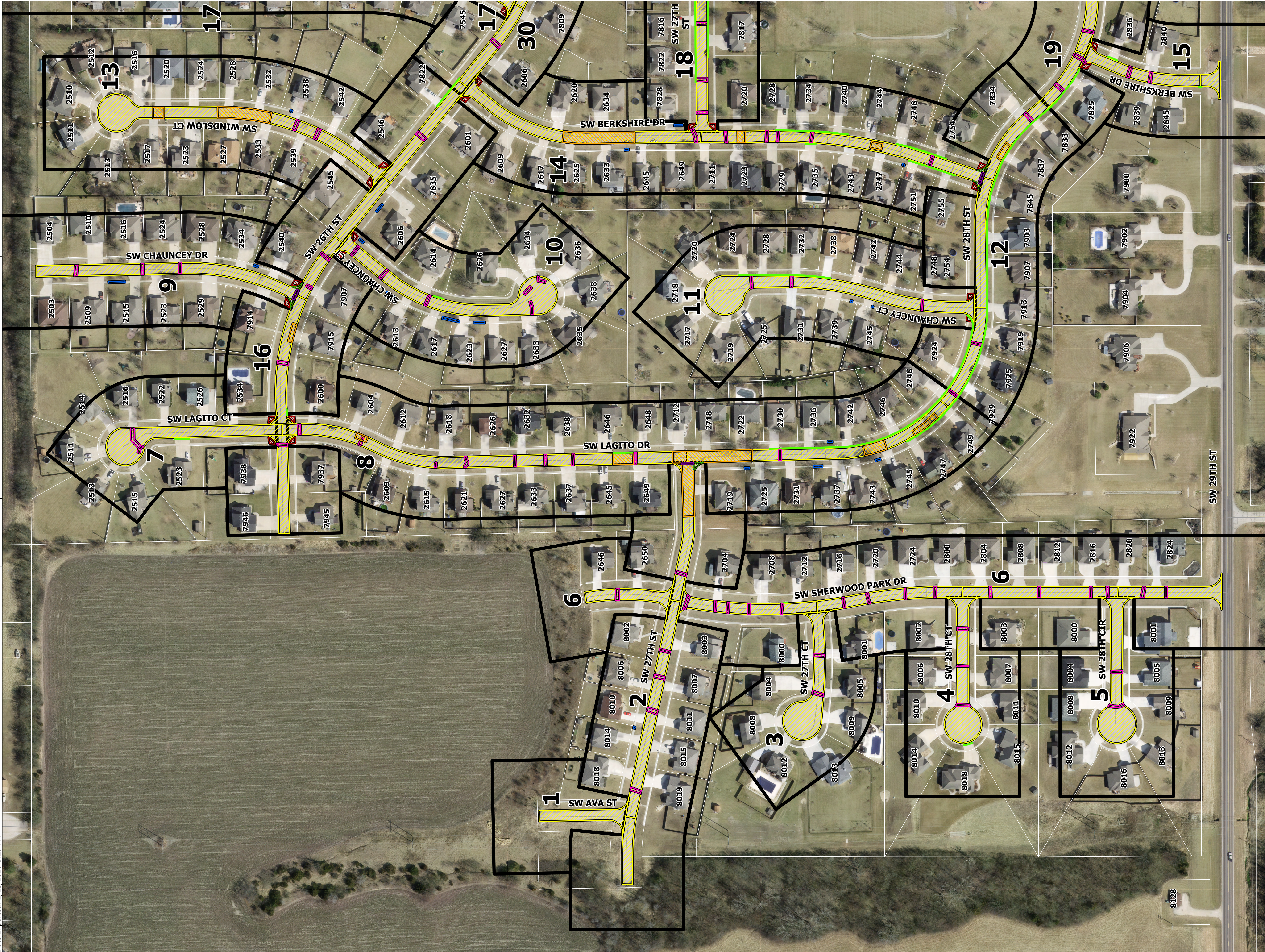
GAS
KANSAS GAS SERVICE
PO BOX 3538
200 E 1ST ST.
TOPEKA, KS 66601
DAWN HECKER
(785)431-4251
DAWN.HECKER@ONEGAS.COM
FOR GAS LEAKS 1-888-482-4950
911 MUST ALSO BE CALLED IMMEDIATELY

SANITARY/STORM SEWER
CITY OF TOPEKA, WPC DIV.
1115 NE POPLAR ST.
TOPEKA, KS 66616
DARRIN A. COFFLAND
(785)368-2467
DCOFFLAND@TOPEKA.ORG

WATER
CITY OF TOPEKA, WATER DIST.
3245 NW WATERWORKS DR.
TOPEKA, KS 66606
(785)368-2448

TELEPHONE
AT&T
220 SE 6TH ST., RM 360
TOPEKA, KS 66603
GARY KNIGHT
(785)276-5877
GK9882@ATT.COM
OR
DANIEL CHASE
(785)276-6147
DC2553@ATT.COM

TRAFFIC SIGNAL
CITY OF TOPEKA, TRAFFIC OPS
927 NW HARRISON ST.
TOPEKA, KS 66612
DUANE MORRIS
(785)368-3913
DMORRIS@TOPEKA.COM



Rehab Description:
— REMOVE & REPLACE, CURB & GUTTER (TYPE IV)

Rehab Description:
■ PAVEMENT, COLDMILLING / 2" ASPHALTIC CONCRETE
■ PAVEMENT, ASPHALT CRACK REPAIR
■ PAVEMENT, ASPHALT PAVEMENT PATCHING
■ REMOVE & REPLACE, 4" CONCRETE SIDEWALK, 4' WIDE
■ REMOVE & REPLACE, SIDEWALK RAMP
■ REMOVE & REPLACE, CONCRETE VALLEY GUTTER
■ REMOVE & REPLACE, 8" CONCRETE PAVEMENT (SPANDREL)
■ QUANTITY TABLE REFERENCE BOUNDARY

Scale

100 0 100 200 Feet

N

SHEET NUMBER		TOTAL SHEETS	
2		10	
YEAR 2020			
PROJECT NO. 841060.06			
PROJECT NO.			
Sherwood Park Neighborhood Rehabilitation Project			
DATE	DESCRIPTION		
PLAN SHEET 1 OF 3 (SHERWOOD PARK)			
GBA™			
9801 Renner Boulevard Lenexa, Kansas 66219 913 . 492 . 0400 www.gbateam.com			
© GEORGE BUTLER ASSOCIATES, INC. 2020 PRO. ENGINEER 000133 ARCHITECT 00212 LANDSCAPE ARCHITECT 000025 PRO. LAND SURVEYOR 000059			

	DATE		
BY			
REFERENCES NOTED			
REFERENCES CHECKED			

Drawn By : trenfro
Plotted : 2/18/2020
File : G:\14430\Micro\Highways\14430R\1303.dgn

QUANTITY SHAPE 1
No Additional Rehabilitation Neccesary

QUANTITY SHAPE 2		
Rehab Description	Quantity	Units
Remove and Replace Concrete Valley Gutter	7.1	S.Y.
Remove and Replace 8" Concrete Pavement (Spandrel)	15.9	S.Y.
Asphalt Pavement Patching	106.7	TONS
6" Aggregate Base - Type AB-3	114.8	TONS
4" Concrete Sidewalk, 4' Wide	22.0	S.F.
Asphalt Crack Repair	17.4	TONS

QUANTITY SHAPE 3		
Rehab Description	Quantity	Units
Asphalt Crack Repair	7.0	TONS

QUANTITY SHAPE 4		
Rehab Description	Quantity	Units
Remove and Replace Curb & Gutter (Type IV)	22.0	L.F.
Asphalt Crack Repair	10.4	TONS

QUANTITY SHAPE 5		
Rehab Description	Quantity	Units
Asphalt Crack Repair	7.0	TONS

QUANTITY SHAPE 6		
Rehab Description	Quantity	Units
Remove and Replace Curb & Gutter (Type IV)	11.0	L.F.
Asphalt Crack Repair	55.7	TONS

QUANTITY SHAPE 7		
Rehab Description	Quantity	Units
Remove and Replace Sidewalk Ramp	227.0	S.F.
Remove and Replace Curb & Gutter (Type IV)	34.0	L.F.
Asphalt Crack Repair	7.0	TONS

QUANTITY SHAPE 8		
Rehab Description	Quantity	Units
Remove and Replace Sidewalk Ramp	225.0	S.F.
Remove and Replace Curb & Gutter (Type IV)	724.0	L.F.
Asphalt Pavement Patching	283.2	TONS
6" Aggregate Base - Type AB-3	304.7	TONS
4" Concrete Sidewalk, 4' Wide	213.0	S.F.
Asphalt Crack Repair	34.8	TONS

QUANTITY SHAPE 9		
Rehab Description	Quantity	Units
Remove and Replace Sidewalk Ramp	276.0	S.F.
Remove and Replace Concrete Valley Gutter	14.6	S.Y.
Remove and Replace 8" Concrete Pavement (Spandrel)	24.4	S.Y.
4" Concrete Sidewalk, 4' Wide	178.0	S.F.
Asphalt Crack Repair	10.4	TONS

QUANTITY SHAPE 10		
Rehab Description	Quantity	Units
Remove and Replace Sidewalk Ramp	262.0	S.F.
Remove and Replace Curb & Gutter (Type IV)	23.0	L.F.
4" Concrete Sidewalk, 4' Wide	412.0	S.F.
Asphalt Crack Repair	20.9	TONS

QUANTITY SHAPE 11		
Rehab Description	Quantity	Units
Remove and Replace Sidewalk Ramp	217.0	S.F.
Remove and Replace Curb & Gutter (Type IV)	205.0	L.F.
4" Concrete Sidewalk, 4' Wide	30.0	S.F.
Asphalt Crack Repair	10.4	TONS

QUANTITY SHAPE 12		
Rehab Description	Quantity	Units
Remove and Replace Curb & Gutter (Type IV)	961.0	L.F.
Asphalt Pavement Patching	18.0	TONS
6" Aggregate Base - Type AB-3	19.4	TONS
Asphalt Crack Repair	7.0	TONS

QUANTITY SHAPE 13		
Rehab Description	Quantity	Units
Remove and Replace Sidewalk Ramp	271.0	S.F.
Asphalt Pavement Patching	126.6	TONS
6" Aggregate Base - Type AB-3	136.2	TONS
4" Concrete Sidewalk, 4' Wide	21.0	S.F.
Asphalt Crack Repair	7.0	TONS

QUANTITY SHAPE 14		
Rehab Description	Quantity	Units
Remove and Replace Sidewalk Ramp	447.0	S.F.
Remove and Replace Curb & Gutter (Type IV)	418.0	L.F.
Remove and Replace Concrete Valley Gutter	14.0	S.Y.
Remove and Replace 8" Concrete Pavement (Spandrel)	24.4	S.Y.
Asphalt Pavement Patching	169.8	TONS
6" Aggregate Base - Type AB-3	182.6	TONS
4" Concrete Sidewalk, 4' Wide	139.0	S.F.
Asphalt Crack Repair	20.9	TONS

QUANTITY SHAPE 15		
Rehab Description	Quantity	Units
Remove and Replace Sidewalk Ramp	249.0	S.F.
Remove and Replace Curb & Gutter (Type IV)	33.0	L.F.
Asphalt Crack Repair	7.0	TONS

QUANTITY SHAPE 16		
Rehab Description	Quantity	Units
Remove and Replace Curb & Gutter (Type IV)	99.0	L.F.
Asphalt Pavement Patching	14.8	TONS
6" Aggregate Base - Type AB-3	15.9	TONS
4" Concrete Sidewalk, 4' Wide	79.0	S.F.
Asphalt Crack Repair	17.4	TONS

PROJECT WIDE QUANTITIES		
Rehab Description	Quantity	Units
2" Asphaltic Concrete	70378.3	S.Y.
Cold Milling	70378.3	S.Y.
Unclassified Excavation	75.0	C.Y.
6" Aggregate Base - Type AB-3 (Subgrade Remediation)	160.0	TONS
Traffic Control	1.0	L.S.
Discharge Pipe Relocate	6.0	EACH

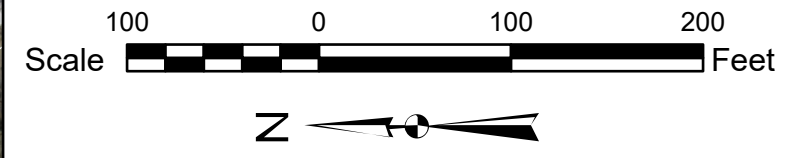
SHEET NUMBER	3	TOTAL SHEETS	10
YEAR 2020			
PROJECT NO. 841060.06			
Sherwood Park Neighborhood Rehabilitation Project			
DESCRIPTION			
DATE			
QUANTITIES SHEET 1 OF 2			
<div><div>GBA</div><div>9801 Renner Boulevard Lenexa, Kansas 66219 913.492.0400 www.gbateam.com</div><div>© GEORGE BUTLER ASSOCIATES, INC. 2008 PRO. ENGINEER 000133 ARCHITECT 00212 LANDSCAPE ARCHITECT 000025 PRO. LAND SURVEYOR 000059</div></div>			

REFERENCES NOTED	BY	DATE
REFERENCES CHECKED		

Path: G:\14430\GIS\ArcGISPro\Topeka\KS_SherwoodPark_MandO_BFG.aprx
User: bgrover
Date Exported: 2/13/2020 3:29 PM



Rehab Description:
● REMOVE & REPLACE, CURB & GUTTER (TYPE IV)
Rehab Description:
■ PAVEMENT, COLDMILLING / 2" ASPHALTIC CONCRETE
■ PAVEMENT, ASPHALT CRACK REPAIR
■ PAVEMENT, ASPHALT PAVEMENT PATCHING
■ REMOVE & REPLACE, 4" CONCRETE SIDEWALK, 4' WIDE
■ REMOVE & REPLACE, SIDEWALK RAMP
■ REMOVE & REPLACE, CONCRETE VALLEY GUTTER
■ REMOVE & REPLACE, 8" CONCRETE PAVEMENT (SPANDREL)
■ QUANTITY TABLE REFERENCE BOUNDARY



SHEET NUMBER 4	TOTAL SHEETS 10	YEAR 2020
		PROJECT NO. 841060.06
		PROJECT NO.

Sherwood Park
Neighborhood Rehabilitation Project

DATE	DESCRIPTION

PLAN SHEET 2 OF 3
(SHERWOOD PARK)

GBA
9801 Renner Boulevard
Lenexa, Kansas 66219
913.492.0400
www.gbateam.com
© GEORGE BUTLER ASSOCIATES, INC. 2020
PRO. ENGINEER 000133
ARCHITECT 00212
LANDSCAPE ARCHITECT 000025
PRO. LAND SURVEYOR 000059

REFERENCES NOTED REFERENCES CHECKED	BY	DATE	

Drawn By : trenfro
File : G:\14430\Micro\Highways\14430R1305.dgn
Plotted : 2/18/2020

QUANTITY SHAPE 17		
Rehab Description	Quantity	Units
Remove and Replace Sidewalk Ramp	215.0	S.F.
4" Concrete Sidewalk, 4' Wide	365.0	S.F.

QUANTITY SHAPE 18		
Rehab Description	Quantity	Units
Remove and Replace Sidewalk Ramp	221.0	S.F.
Remove and Replace Curb & Gutter (Type IV)	1129.0	L.F.
Asphalt Pavement Patching	301.8	TONS
6" Aggregate Base - Type AB-3	324.7	TONS
4" Concrete Sidewalk, 4' Wide	24.0	S.F.
Asphalt Crack Repair	13.9	TONS

QUANTITY SHAPE 19		
Rehab Description	Quantity	Units
Remove and Replace Sidewalk Ramp	211.0	S.F.
Remove and Replace Curb & Gutter (Type IV)	71.0	L.F.
Asphalt Pavement Patching	172.8	TONS
6" Aggregate Base - Type AB-3	185.9	TONS
Asphalt Crack Repair	27.8	TONS

QUANTITY SHAPE 20		
Rehab Description	Quantity	Units
Remove and Replace Sidewalk Ramp	245.0	S.F.
Remove and Replace Curb & Gutter (Type IV)	49.0	L.F.
Asphalt Crack Repair	7.0	TONS

QUANTITY SHAPE 21		
Rehab Description	Quantity	Units
Remove and Replace Sidewalk Ramp	384.0	S.F.
Remove and Replace Curb & Gutter (Type IV)	418.0	L.F.
Asphalt Pavement Patching	212.4	TONS
6" Aggregate Base - Type AB-3	228.5	TONS
4" Concrete Sidewalk, 4' Wide	184.0	S.F.
Asphalt Crack Repair	31.3	TONS

QUANTITY SHAPE 22		
Rehab Description	Quantity	Units
Remove and Replace Sidewalk Ramp	525.0	S.F.
Asphalt Pavement Patching	10.8	TONS
6" Aggregate Base - Type AB-3	11.7	TONS
Asphalt Crack Repair	10.4	TONS

QUANTITY SHAPE 23		
Rehab Description	Quantity	Units
Remove and Replace Sidewalk Ramp	217.0	S.F.
Remove and Replace Curb & Gutter (Type IV)	43.0	L.F.
Remove and Replace Concrete Valley Gutter	7.9	S.Y.
Asphalt Pavement Patching	137.6	TONS
6" Aggregate Base - Type AB-3	148.0	TONS
Asphalt Crack Repair	7.0	TONS

QUANTITY SHAPE 24		
Rehab Description	Quantity	Units
Remove and Replace Sidewalk Ramp	321.0	S.F.
Remove and Replace Concrete Valley Gutter	9.1	S.Y.
Asphalt Pavement Patching	172.3	TONS
6" Aggregate Base - Type AB-3	185.4	TONS
Asphalt Crack Repair	7.0	TONS

QUANTITY SHAPE 25		
Rehab Description	Quantity	Units
Asphalt Pavement Patching	9.3	TONS
6" Aggregate Base - Type AB-3	10.0	TONS
Asphalt Crack Repair	10.4	TONS


QUANTITY SHAPE 26		
Rehab Description	Quantity	Units
Remove and Replace Sidewalk Ramp	261.0	S.F.
Asphalt Pavement Patching	14.4	TONS
6" Aggregate Base - Type AB-3	15.5	TONS

QUANTITY SHAPE 27		
Rehab Description	Quantity	Units
Remove and Replace Sidewalk Ramp	214.0	S.F.
Asphalt Pavement Patching	87.6	TONS
6" Aggregate Base - Type AB-3	94.3	TONS

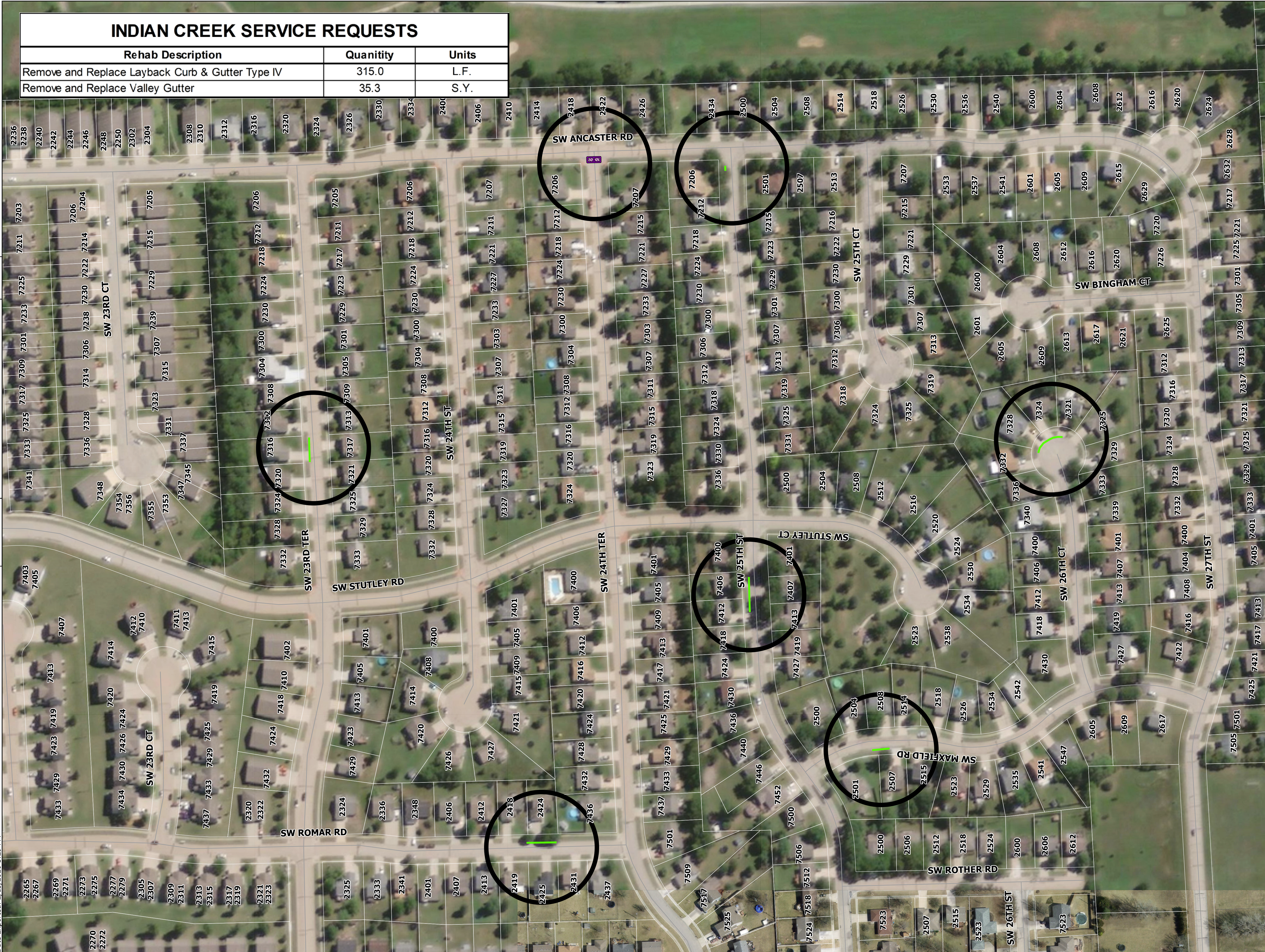
QUANTITY SHAPE 28		
Rehab Description	Quantity	Units
Remove and Replace Sidewalk Ramp	438.0	S.F.
4" Concrete Sidewalk, 4' Wide	160.0	S.F.

QUANTITY SHAPE 29		
Rehab Description	Quantity	Units
Remove and Replace Curb & Gutter (Type IV)	20.0	L.F.
4" Concrete Sidewalk, 4' Wide	179.0	S.F.
Asphalt Crack Repair	41.8	TONS

QUANTITY SHAPE 30		
Rehab Description	Quantity	Units
Asphalt Pavement Patching	172.9	TONS
6" Aggregate Base - Type AB-3	186.0	TONS
4" Concrete Sidewalk, 4' Wide	118.0	S.F.
Asphalt Crack Repair	31.3	TONS

SHEET NUMBER	5	TOTAL SHEETS	10
YEAR 2020			
PROJECT NO. 841060.06			
Sherwood Park Neighborhood Rehabilitation Project			
DESCRIPTION			
DATE			
QUANTITIES SHEET 2 OF 2			
<div><div>9801 Renner Boulevard Lenexa, Kansas 66219 913.492.0400 www.gbateam.com</div><div>© GEORGE BUTLER ASSOCIATES, INC. 2008 PRO. ENGINEER 000133 ARCHITECT 00212 LANDSCAPE ARCHITECT 000025 PRO. LAND SURVEYOR 000059</div></div>			

REFERENCES NOTED	BY	DATE
REFERENCES CHECKED		



INDIAN CREEK SERVICE REQUESTS		
Rehab Description	Quantity	Units
Remove and Replace Layback Curb & Gutter Type IV	315.0	L.F.
Remove and Replace Valley Gutter	35.3	S.Y.

Rehab Description:
● REMOVE & REPLACE, CURB & GUTTER (TYPE IV)
Rehab Description:
■ PAVEMENT, COLDMILLING / 2" ASPHALTIC CONCRETE
■ PAVEMENT, ASPHALT CRACK REPAIR
■ PAVEMENT, ASPHALT PAVEMENT PATCHING
■ REMOVE & REPLACE, 4" CONCRETE SIDEWALK, 4' WIDE
■ REMOVE & REPLACE, SIDEWALK RAMP
■ REMOVE & REPLACE, CONCRETE VALLEY GUTTER
■ REMOVE & REPLACE, 8" CONCRETE PAVEMENT (SPANDREL)
■ QUANTITY TABLE REFERENCE BOUNDARY

Scale 100 0 100 200 Feet
N

SHEET NUMBER
6

TOTAL SHEETS
10

YEAR
2020

PROJECT NO.
841060.06

PROJECT NO.

DESCRIPTION

DATE

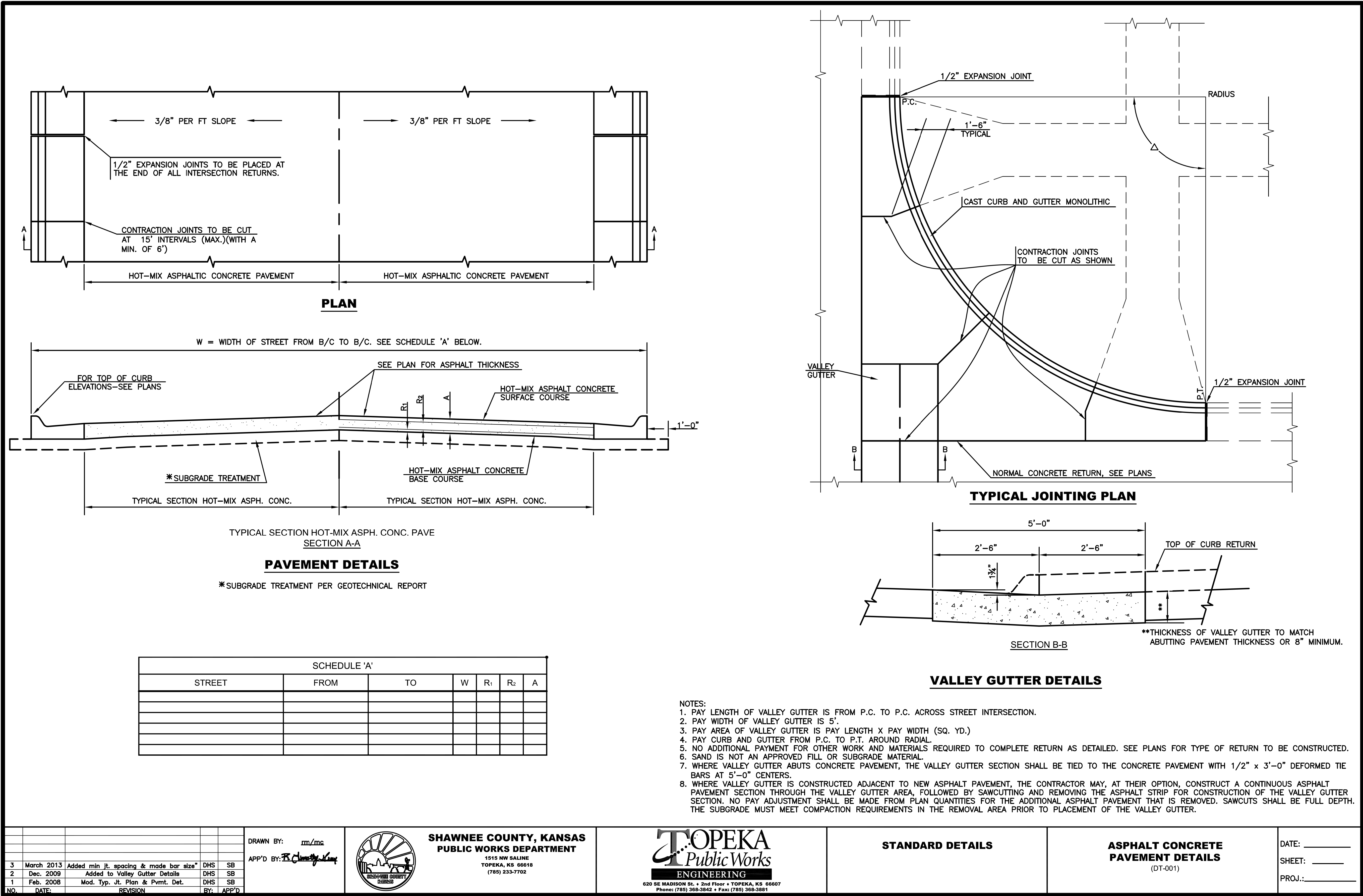
PLAN SHEET 3 OF 3
(INDIAN CREEK)

GBA™
9801 Renner Boulevard
Lenexa, Kansas 66219
913.492.0400
www.gbateam.com
© GEORGE BUTLER ASSOCIATES, INC. 2020
PRO. ENGINEER 000133
ARCHITECT 00212
LANDSCAPE ARCHITECT 000025
PRO. LAND SURVEYOR 000059

Sherwood Park
Neighborhood Rehabilitation Project

DATE	
BY	
REFERENCES NOTED	
REFERENCES CHECKED	

Drawn By : trenfro
Plotted : 2/18/2020
File : G:\14430Micro\Highways\14430R2101.dgn



SHEET NUMBER	7	TOTAL SHEETS	10
YEAR	2020		
PROJECT NO.	841060.06		
Sherwood Park Neighborhood Rehabilitation Project			
DESCRIPTION			
DATE			
CONSTRUCTION DETAILS SHEET 1 OF 4			
<div><div>GBA</div><div>9801 Renner Boulevard Lenexa, Kansas 66219 913.492.0400 www.gbateam.com</div><div>© GEORGE BUTLER ASSOCIATES, INC. 2008 PRO. ENGINEER 000133 ARCHITECT 00212</div><div>LANDSCAPE ARCHITECT 000025 PRO. LAND SURVEYOR 000059</div></div>			

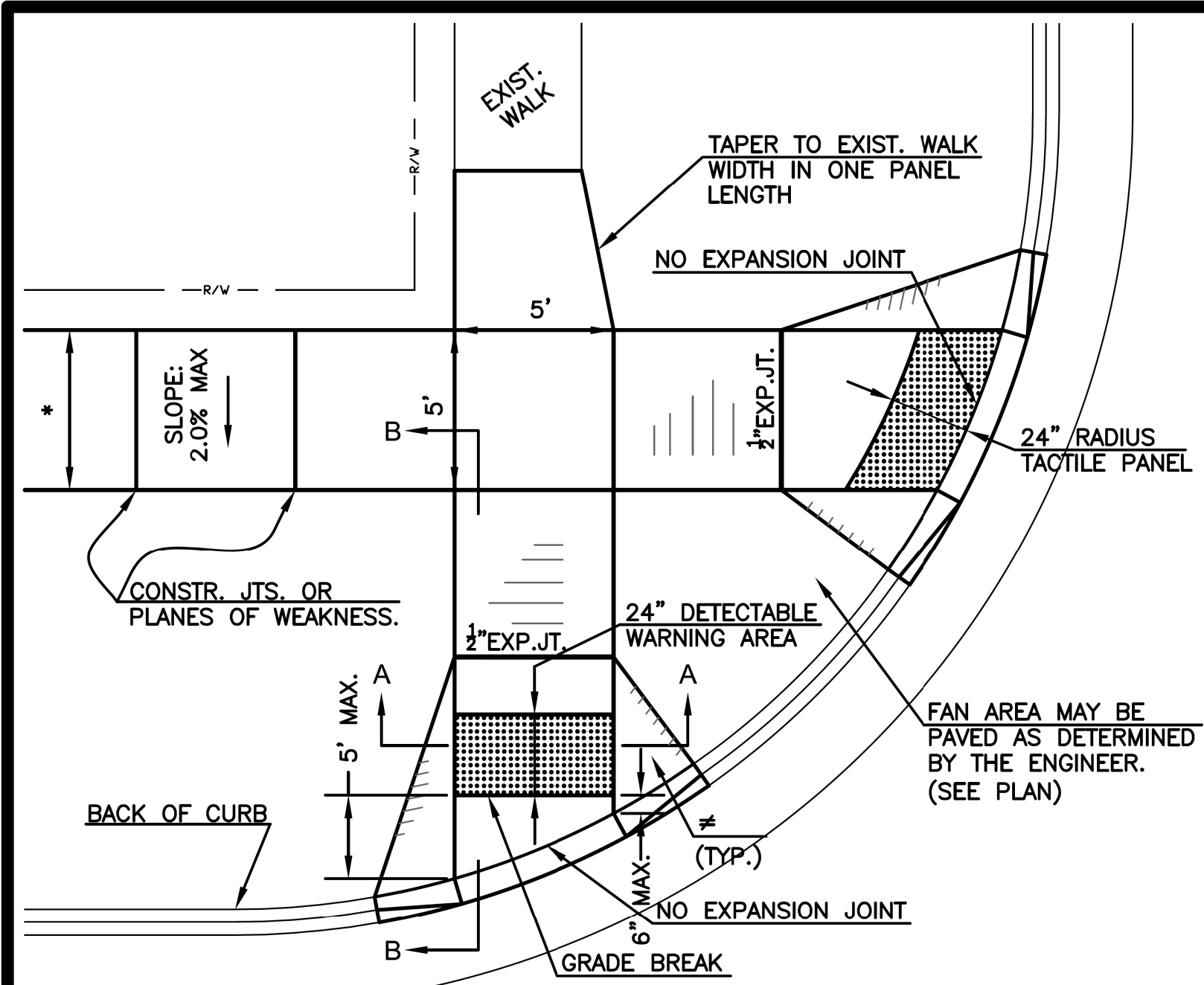
DRAWN BY: mm/mc
APP'D BY: R. J. Smith



DATE: _____
SHEET: _____
PROJ.: _____

	BY	DATE
REFERENCES NOTED		
REFERENCES CHECKED		

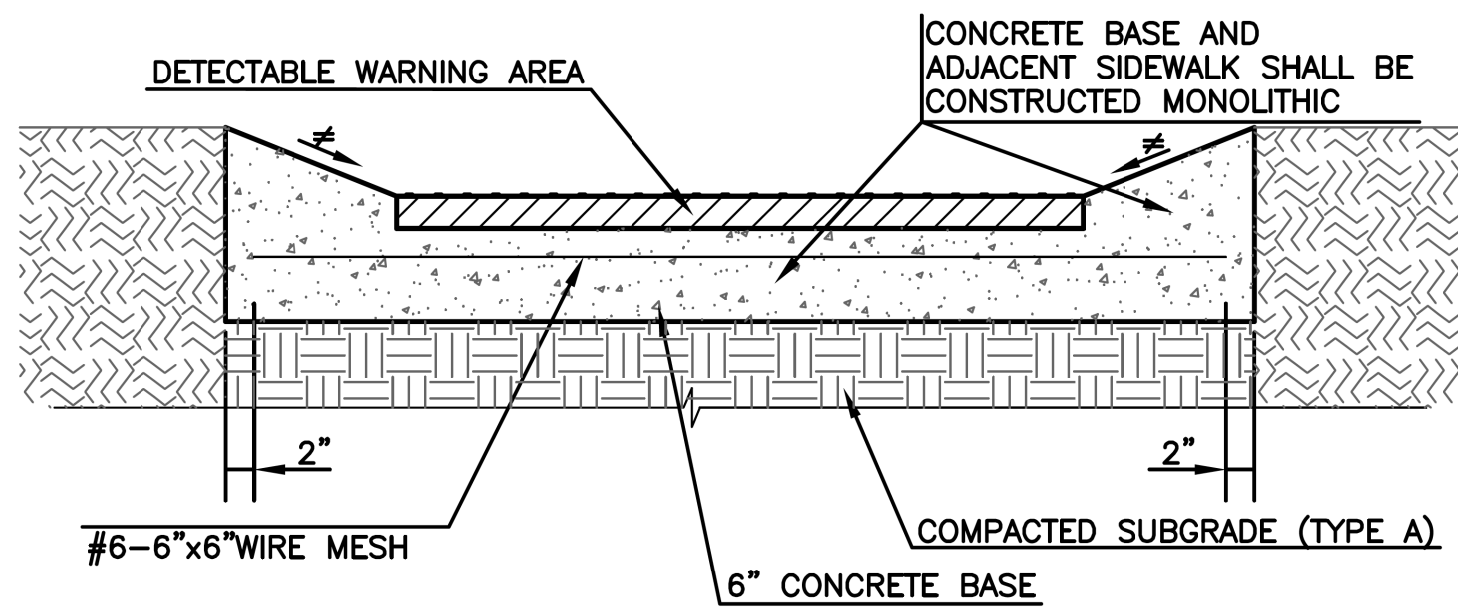
Drawn By : trenfro
Plotted : 2/18/2020
File : G:\14430\Micro\Highways\14430R2103.dgn



NOTES:

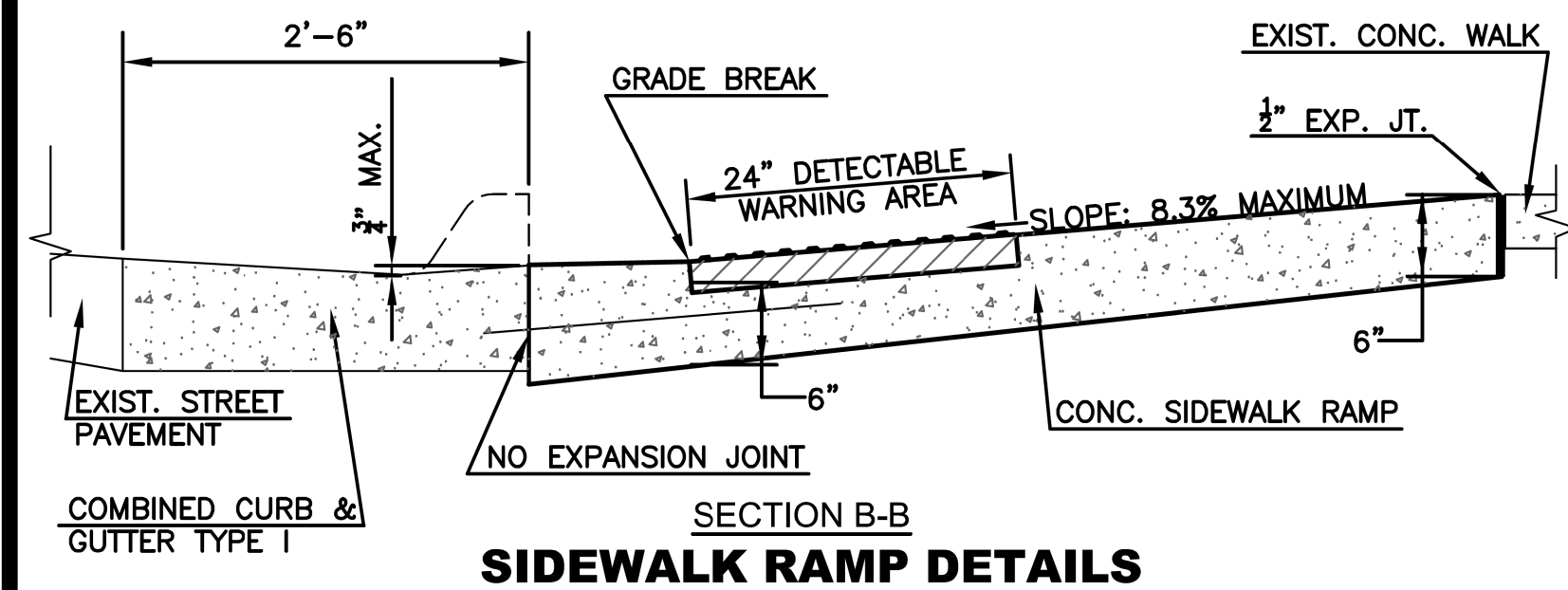
1. FAN AREA PAVEMENT TO BE PAID FOR AS 6" CONCRETE.
2. EXPANSION JOINTS SHALL BE THE CONSTRUCTION LIMITS OF 6" CONCRETE IN RAMP.

* 5' - PRINCIPAL ARTERIALS, MINOR ARTERIALS, COLLECTORS
 4' - SUB-COLLECTORS, LOCALS
 ≠ 10:1 MAXIMUM AT PAVED FAN AREA, 4:1 AT STANDARD RAMP



SECTION A-A
TYPICAL SECTION OF DETECTABLE WARNING SYSTEM

≠ 10:1 MAXIMUM AT PAVED FAN AREA, 4:1 AT STANDARD RAMP

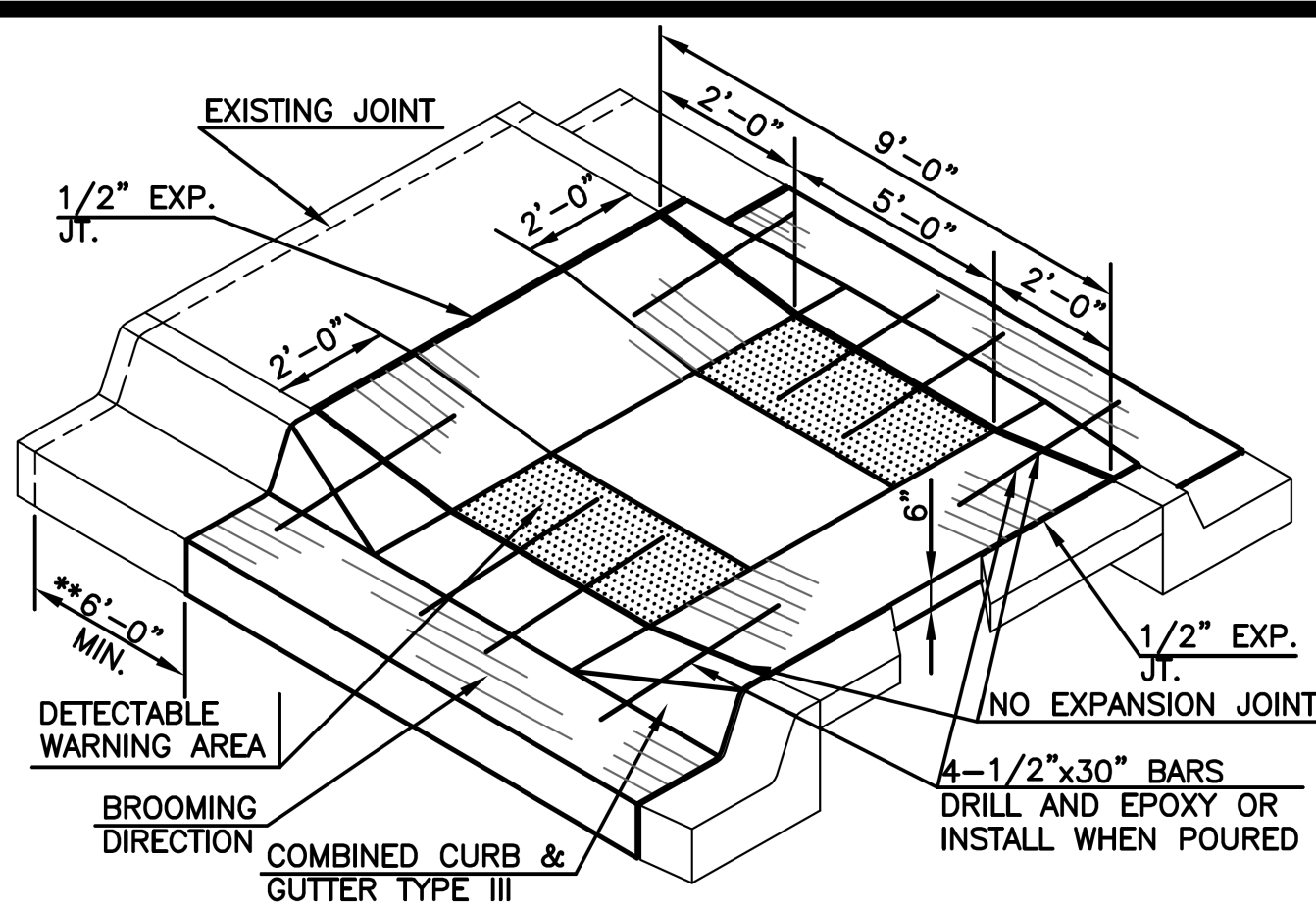


NOTES:

1. RAMP TO BE PAID FOR AS SIDEWALK RAMP. CURB AND GUTTER TO BE INCLUDED IN THE PRICE.
BID FOR COMBINED CURB AND GUTTER TYPE I.
2. SIDEWALK RAMP SHALL OBTAIN A MINIMUM OF 6" ABOVE \bar{I} FOR NEW SIDEWALK CONSTRUCTION.

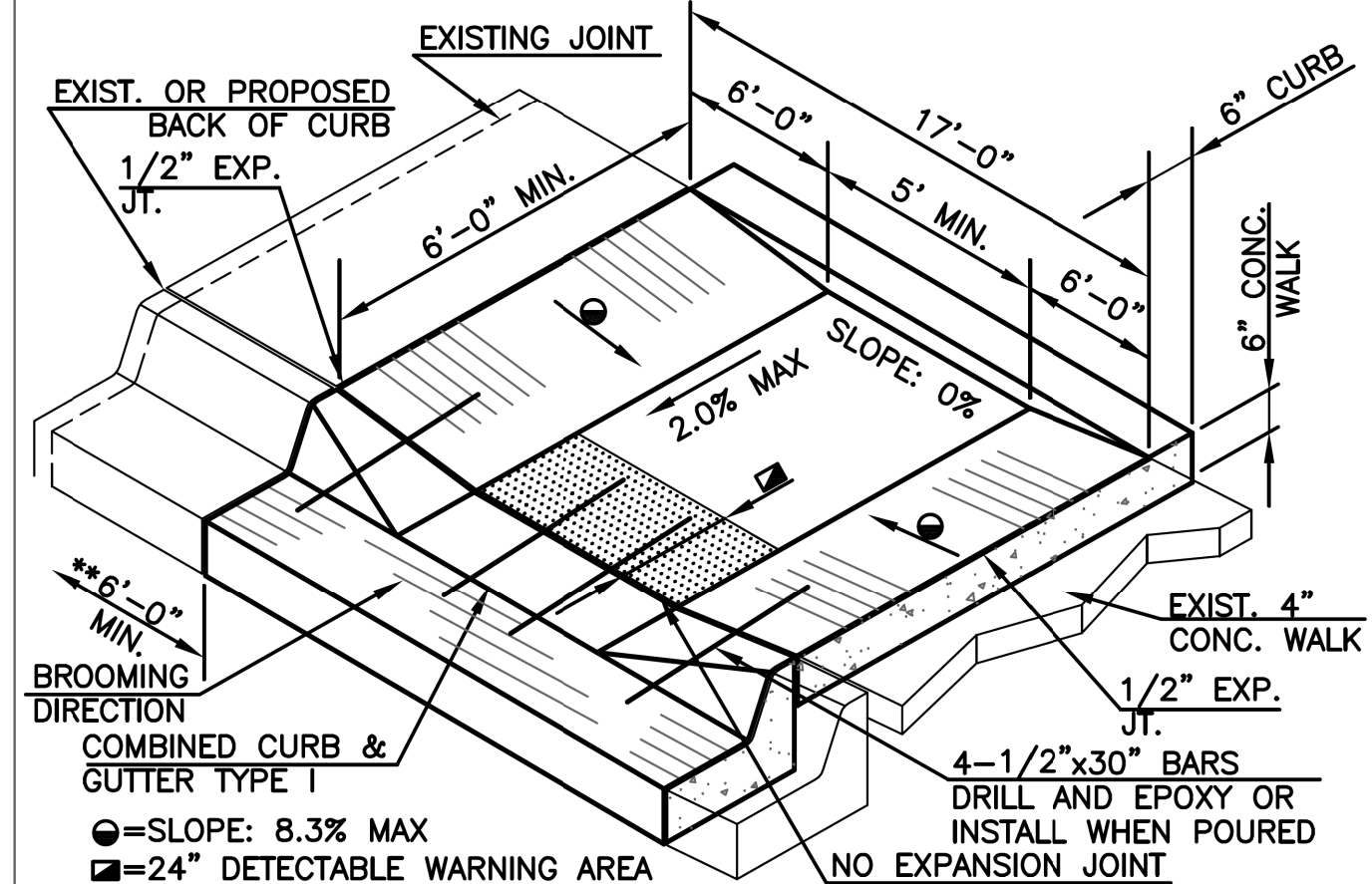
7	May 2016	Lightened lines, added "No Exp Jt" 09/C	DHS	SB
6	June 2015	Added Grade Break at & Updated Notes	DHS	SB
5	March 2013	Mod. bar spacing @ ret wall & bar size	DHS	SB
4	Feb. 2013	Add. Radial Ramps and Rearranged sheet	DHS	BC
3	Aug. 2011	Add. Access-Tile Remv.Sys. to Spec.Req.	DHS	SB
2	Dec. 2009	Mod. S/W Details & cross slope to 2%	DHS	SB
1	Feb. 2008	Add. Armor-Tile Sys. & Mod. All Iso. Det.	DHS	SB
NO.	DATE:	REVISION	BY:	APP'D

DRAWN BY: rm/mc
APP'D BY: R. J. J. J. J.



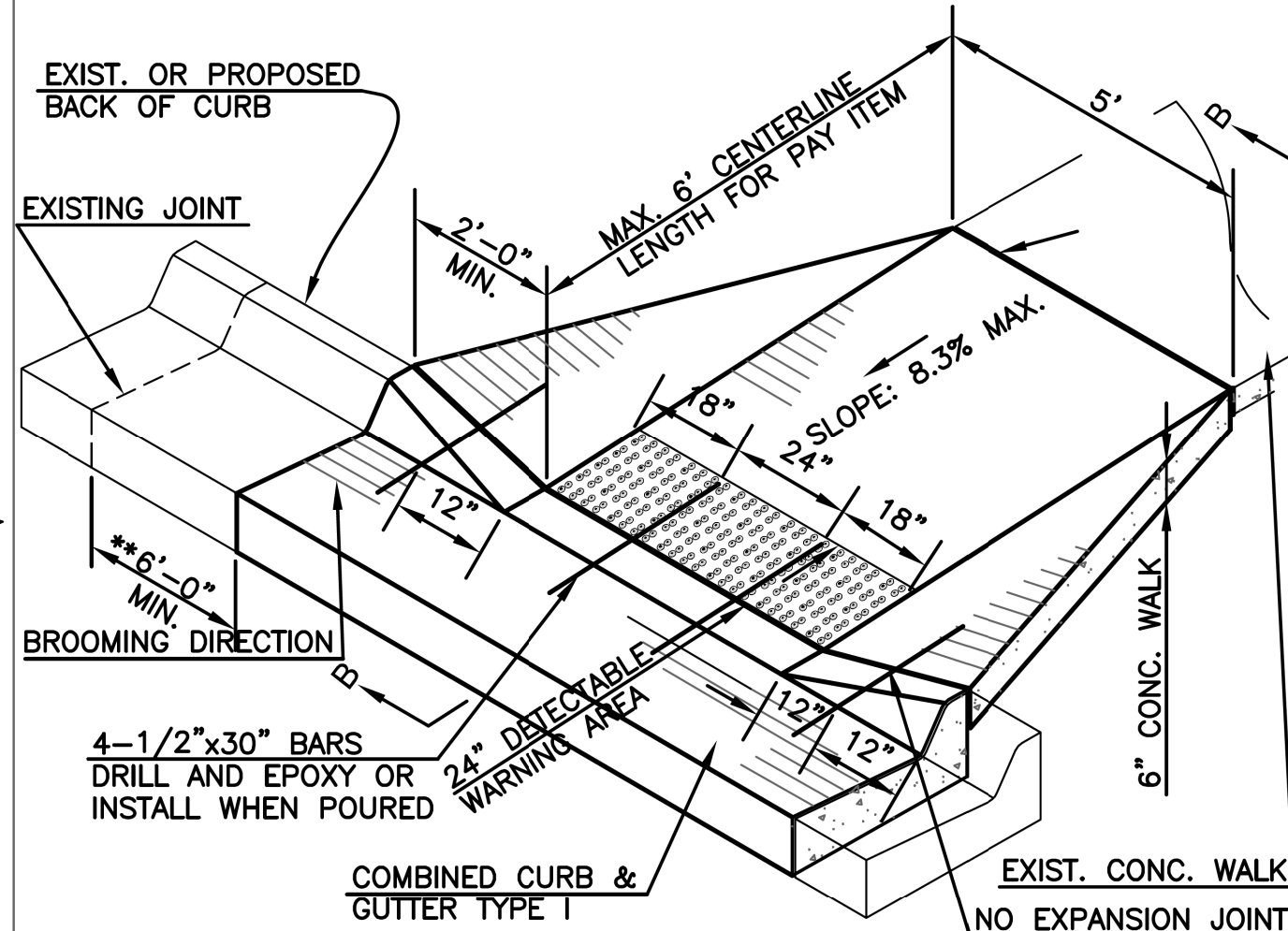
ISOMETRIC OF MEDIAN RAMP CROSSING

NOTE:
MEDIAN RAMP CROSSING SHALL BE BUILT AT LOCATIONS SHOWN ON THE PLANS.
CONCRETE MEDIAN CROSSINGS TO BE PAID FOR AS SIDEWALK RAMP.

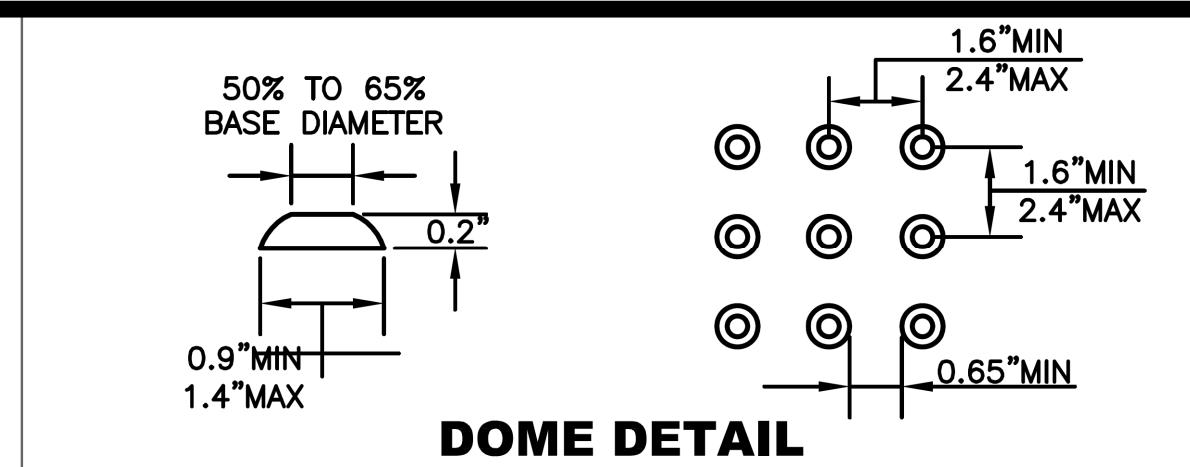


ISOMETRIC OF RAMP WITH ADJACENT WALK SHOWN

** IF CURB AND GUTTER AND/OR SIDEWALK TO BE REMOVED IS WITHIN 6'-0" OF AN EXISTING JOINT, REMOVE CURB AND GUTTER AND/OR SIDEWALK BACK TO EXISTING JOINT. JOINTS ARE TO BE PLACED AS PER SECTION 5, SUBSECTION 8 OF CITY/COUNTY STANDARD TECHNICAL SPECIFICATIONS.



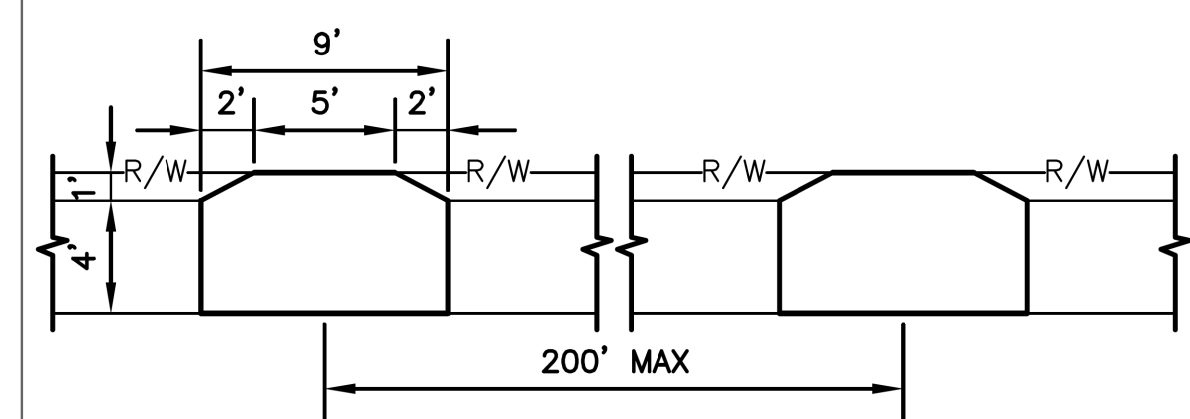
ISOMETRIC OF RAMP WITH PERPENDICULAR WALK SHOWN



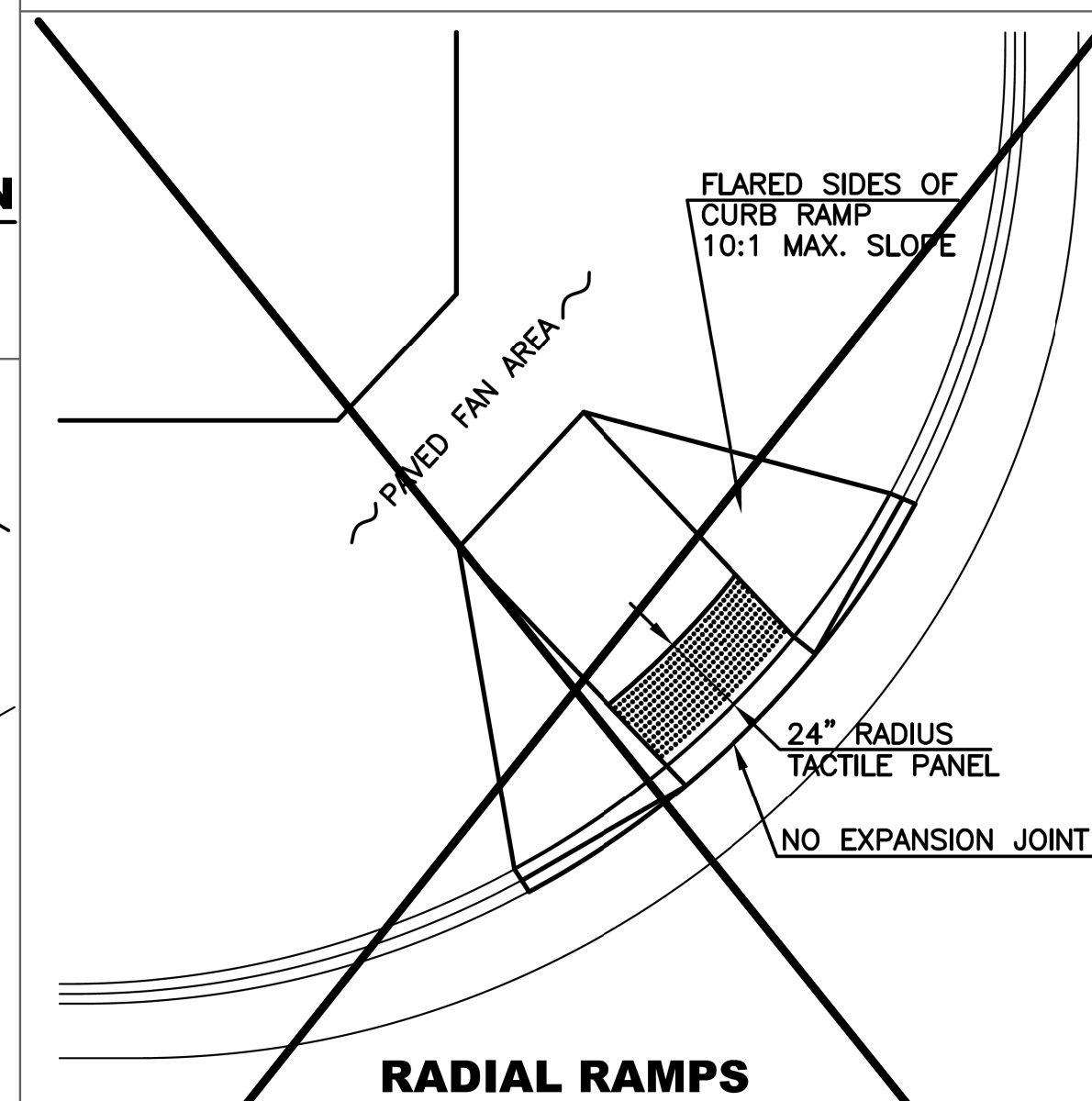
DOME DETAIL

~~**RUNNING BOND/PARALLEL
ALIGNMENT AND JOINT DETAIL**~~

Installation pattern for detectable warning paving bricks



TYPICAL WHEELCHAIR PASSING ZONE FOR SUB-COLLECTOR AND LOCAL STREETS



RADIAL RAMPS

NOTE:
RADIAL RAMPS WILL NOT BE PERMITTED IN NEW TRAFFICWAY IMPROVEMENT PROJECTS, AND WILL ONLY BE ALLOWED AS DIRECTED BY THE ENGINEER IN RETRO-FIT CONSTRUCTION WHEN PERPENDICULAR RAMPS CANNOT BE CONSTRUCTED.

STANDARD DETAILS


RAMP & WALK DETAILS

(DT-004)

DATE: _____

SHEET: _____

PROJ.:_____

SHEET NUMBER	9	TOTAL SHEETS	10
YEAR 2020			
PROJECT NO. 841060.06			
<i>Sherwood Park Neighborhood Rehabilitation Project</i>			
DATE		DESCRIPTION	
CONSTRUCTION DETAILS SHEET 3 OF 4			
 <p>9801 Renner Boulevard Lenexa, Kansas 66219 913-492-0400 www.gbateam.com</p> <p>© GEORGE BUTLER ASSOCIATES, INC. 2008 PROJ. ENGINEER 000133 ARCHITECT 00212 LANDSCAPE ARCHITECT 000025 PRG. LAND SURVEYOR 000059</p>			

