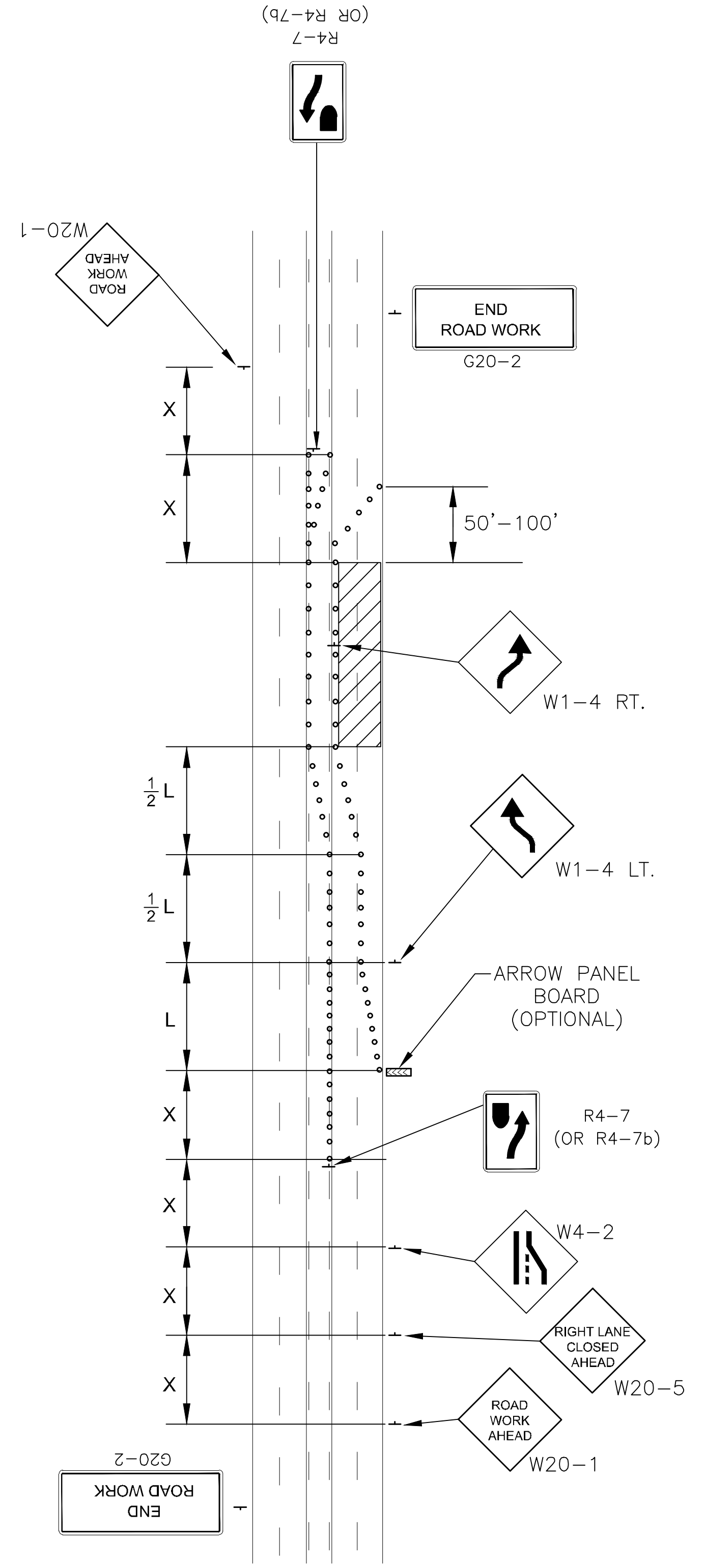
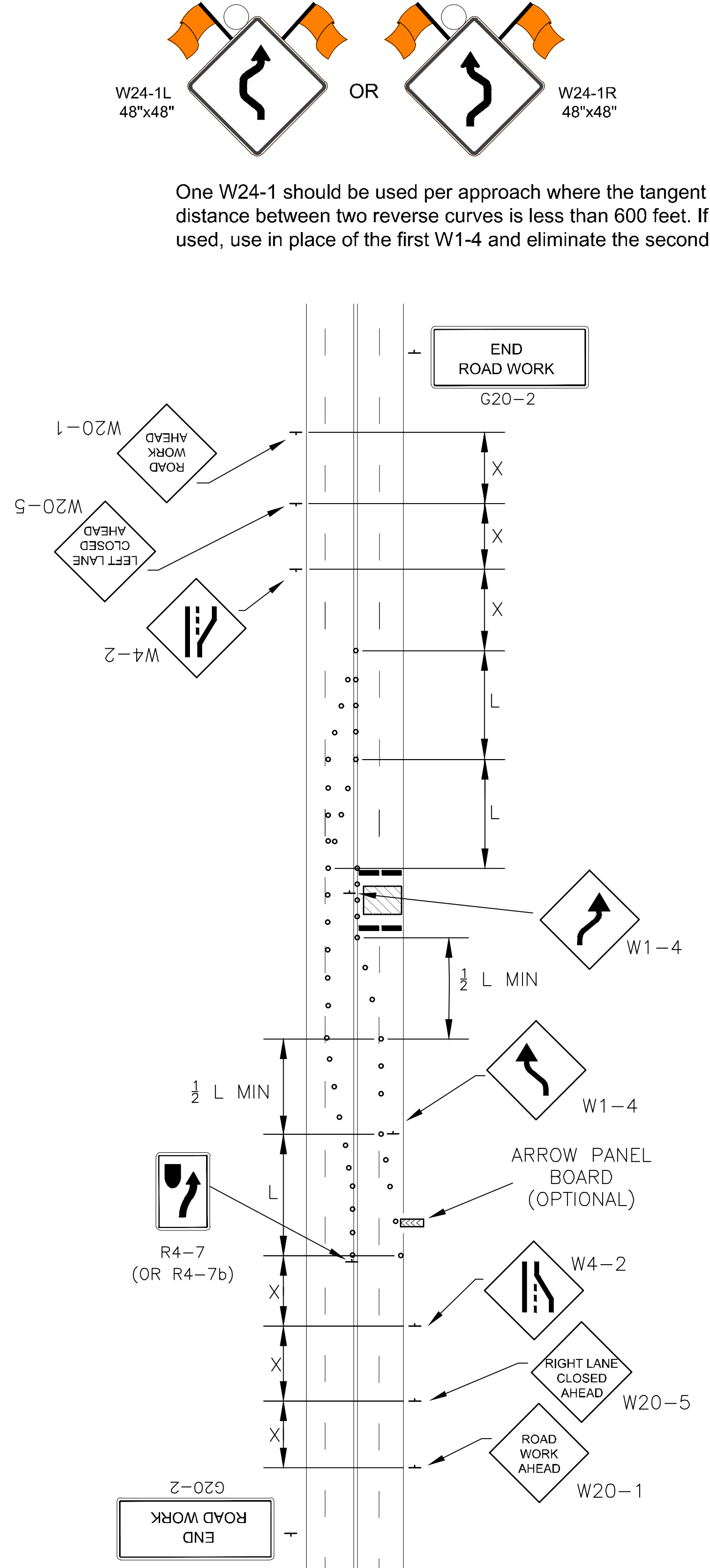


**FIGURE - 120 A (1)
BIKE LANE CLOSURE**

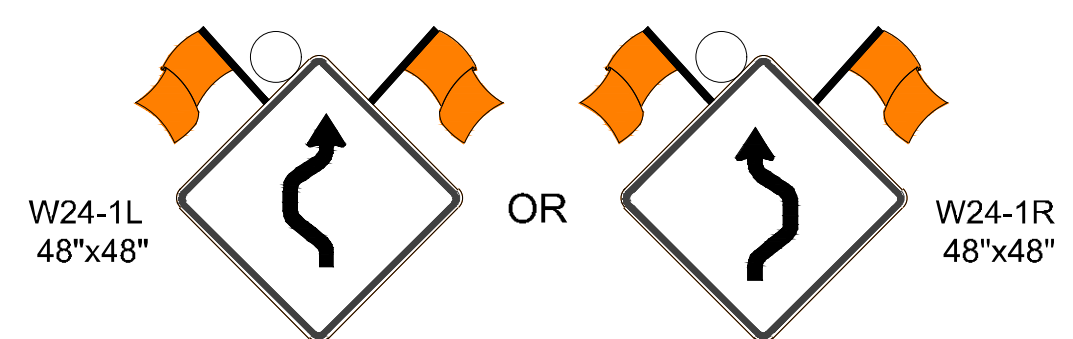


**FIGURE - 120 A (2)
FIVE LANE ROADWAY
w/ TWO LANES CLOSED**

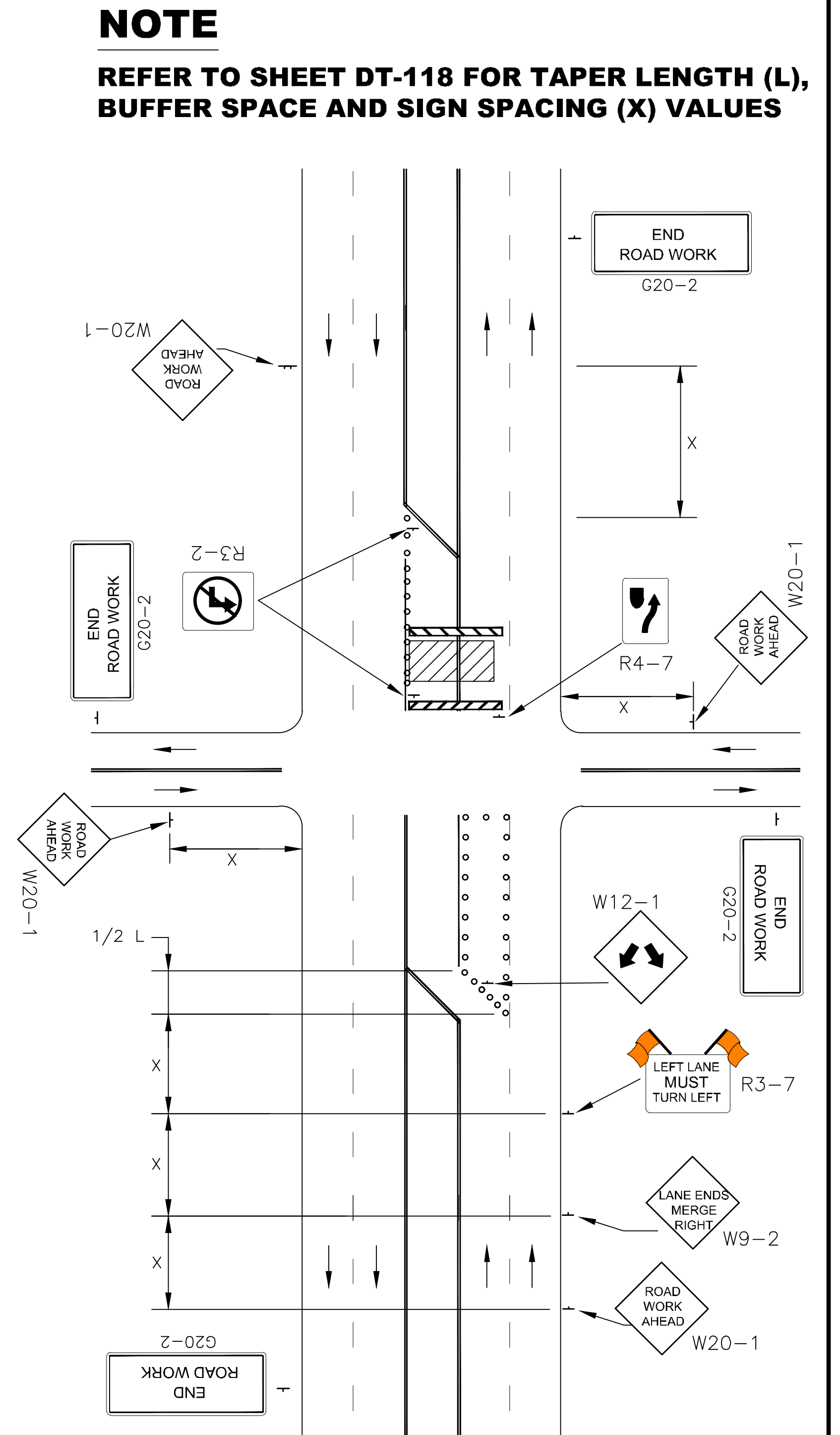
(BASED ON SPEED LIMIT OF 40mph AND LANE WIDTH OF 12')



**FIGURE - 120 A (3)
4-LANE UNDIVIDED ROADWAY-HALF
ROADWAY IS CLOSED**



One W24-1 should be used per approach where the tangent distance between two reverse curves is less than 600 feet. If used, use in place of the first W1-4 and eliminate the second.



**FIGURE - 120 A (4)
MULTIPLE LANE CLOSURE AT AN INTERSECTION**

LEGEND	
— = SIGN	◀◀◀ = ARROW PANEL BOARD
— = TYPE III BARRICADE	▨ = WORK SPACE
○ = CHANNELIZING DEVICES	⏏ = FLAGGER

NOTE
REFER TO SHEET DT-118 FOR TAPER LENGTH (L),
BUFFER SPACE AND SIGN SPACING (X) VALUES

NO.	DATE:	MAJOR REVISION	REVISION	SU	KRE
1	10/30/20				
				BY:	APP'D

DRAWN BY: Shoeb Uddin
APP'D BY: Kristi Ericksen

TOPEKA
Public Works
ENGINEERING
620 SE MADISON STREET - 2nd FLR. • TOPEKA, KS 66607
Phone: (785) 368-3842 • Fax: (785) 368-3881

STANDARD DETAILS
DT - 120 A

TRAFFIC CONTROL
MULTI LANE CLOSURE
BIKE LANE CLOSURE

DATE: _____
PAGE: _____ OF _____
PROJECT: _____