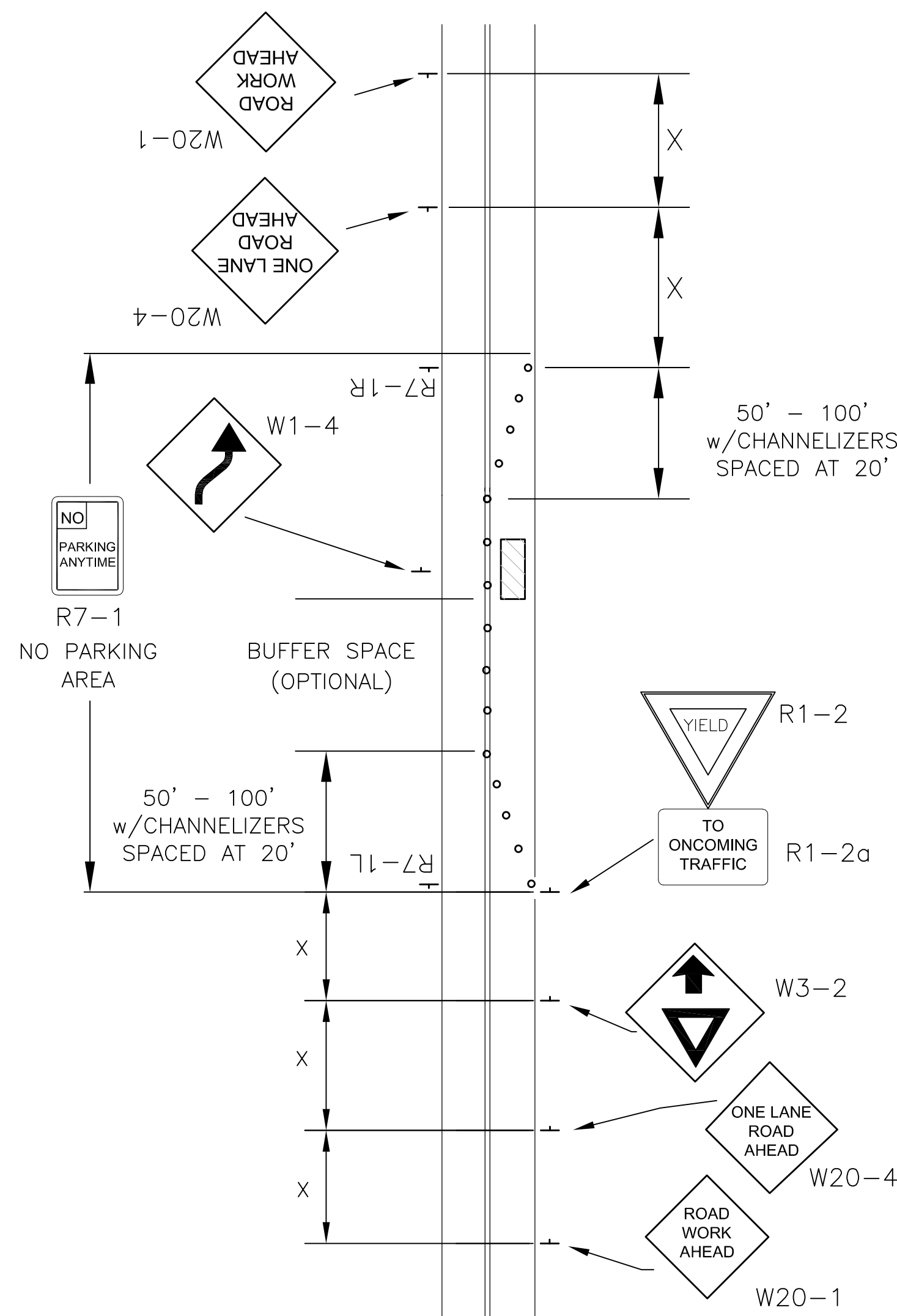
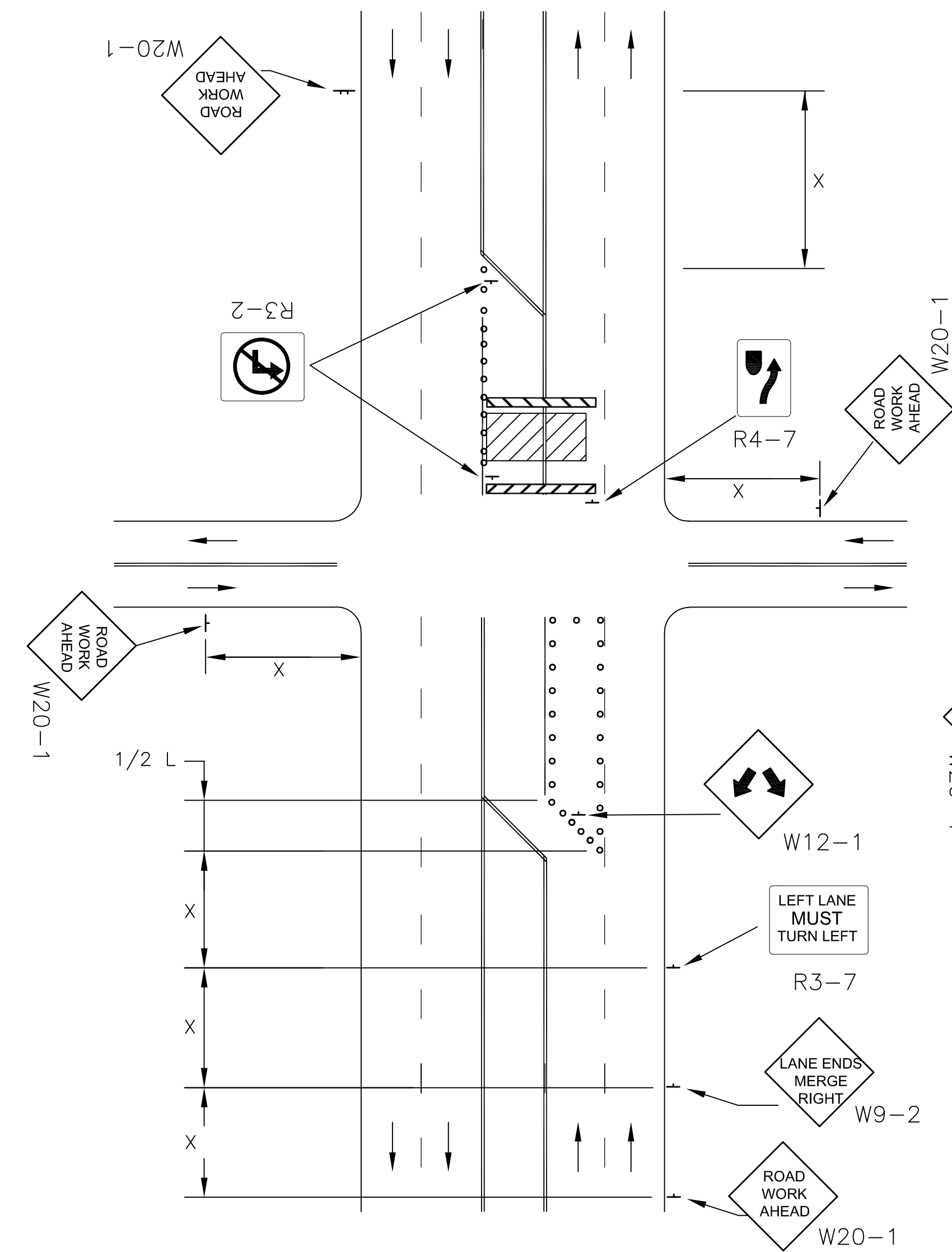


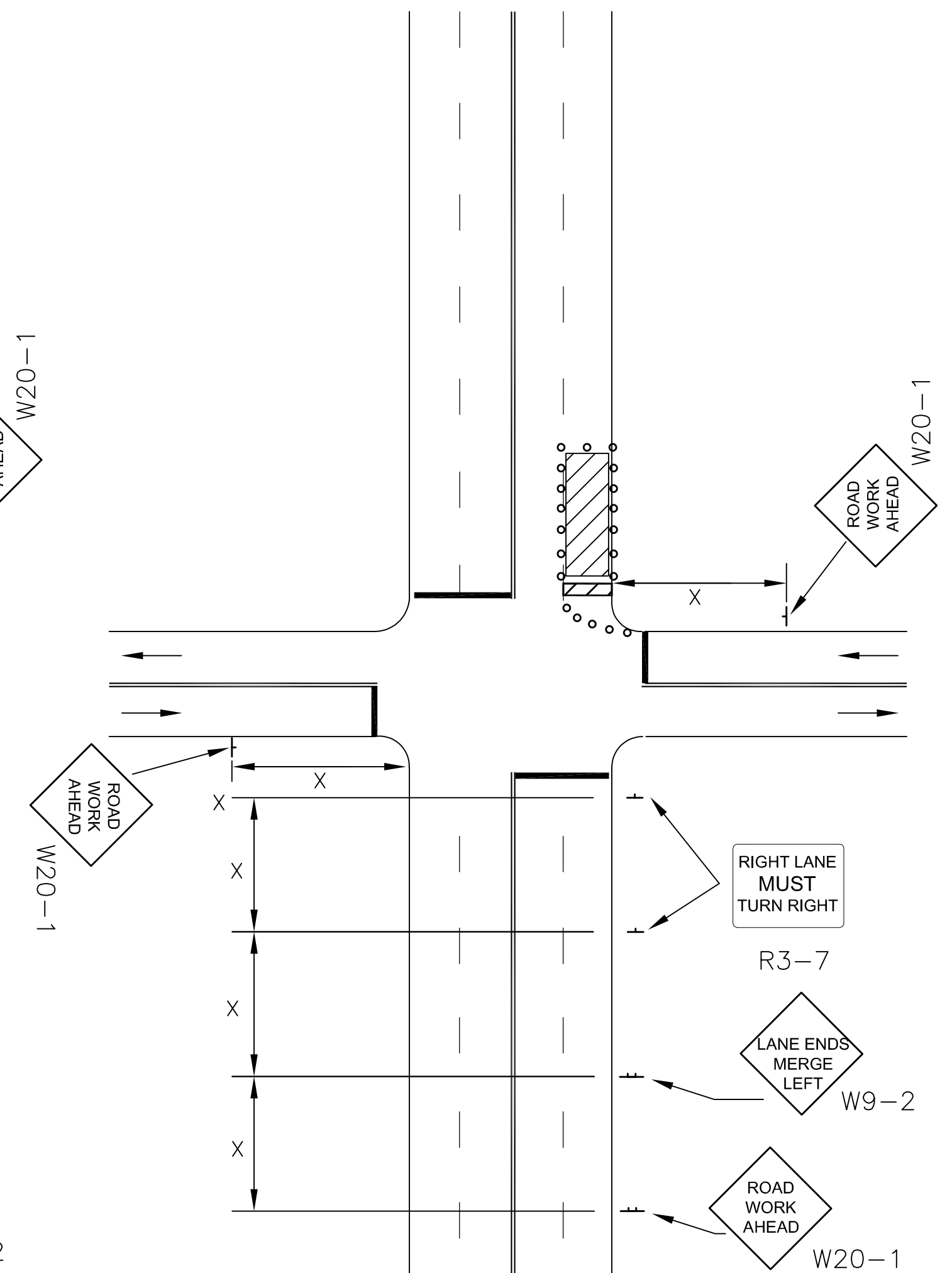
**LANE CLOSURE ON TWO-LANE ROAD  
W/ FLAGGER, DAYTIME ONLY**



**LANE CLOSURE ON TWO-LANE ROAD  
WITH LOW TRAFFIC VOLUMES  
(PRIOR APPROVAL REQUIRED)**



**MULTIPLE LANE CLOSURE AT AN  
INTERSECTION**



**RIGHT -HAND LANE CLOSURE ON THE  
FAR SIDE OF AN INTERSECTION**

**REFER TO SHEET DT-118 FOR TAPER LENGTH(L) AND SIGN SPACING(X) VALUES**

NO.	DATE:	REVISION	BY:	APP'D
3	08/15/23	UPDATE W9-2 SIGN TEXT	AMR	
2	08/06/15	REMOVE W4-7 & REPLACE WITH W9-2	KAP	TLC
1	01/30/12	UPDATE SPECIFICATIONS	KAP	LGV

DRAWN BY: K.PELTON  
APP'D BY: T. CODER



**TRAFFIC CONTROL**

DATE: \_\_\_\_\_  
PAGE: \_\_\_\_\_ OF \_\_\_\_\_  
DRAWING: DT-119  
PROJ. \_\_\_\_\_