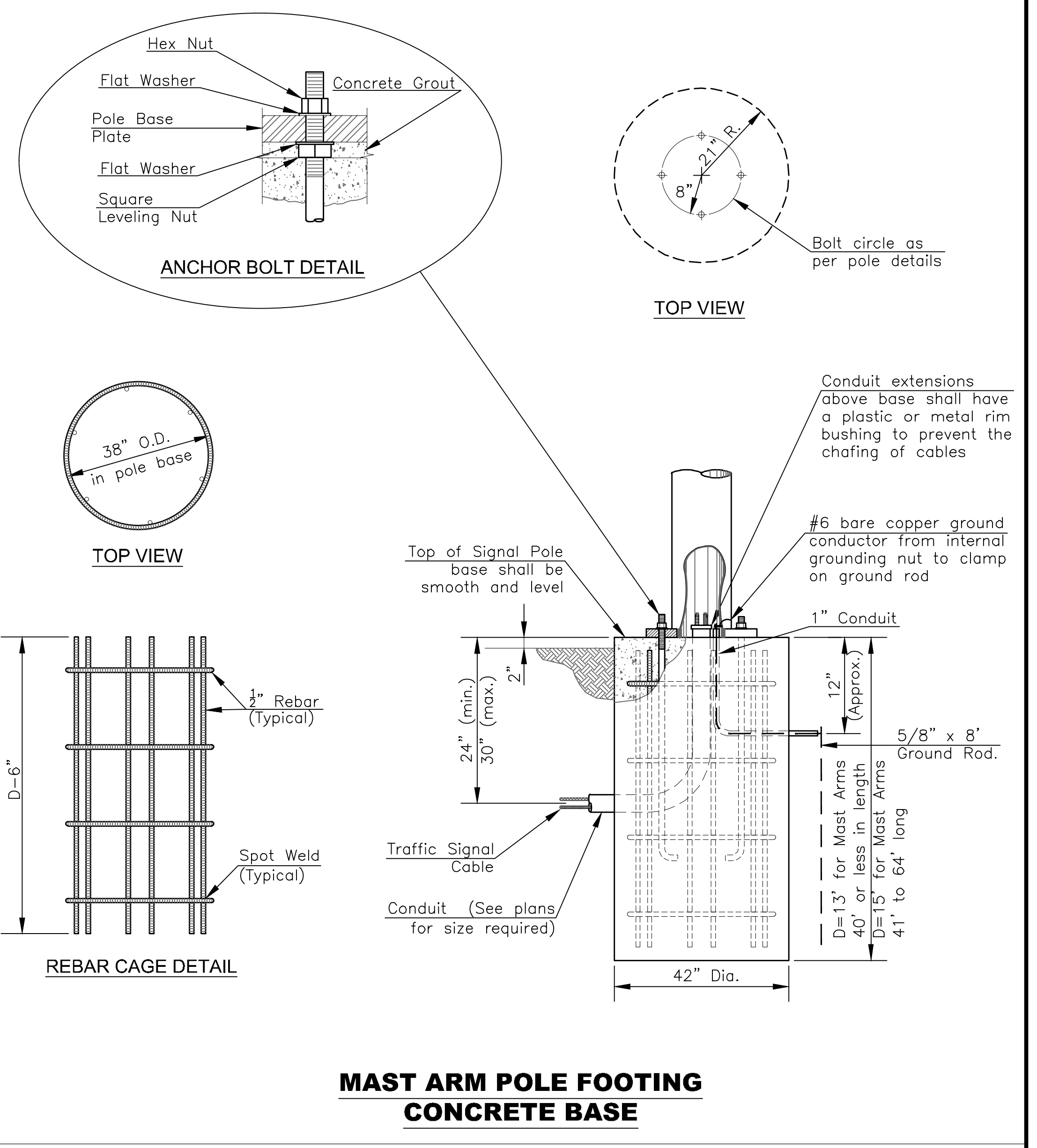
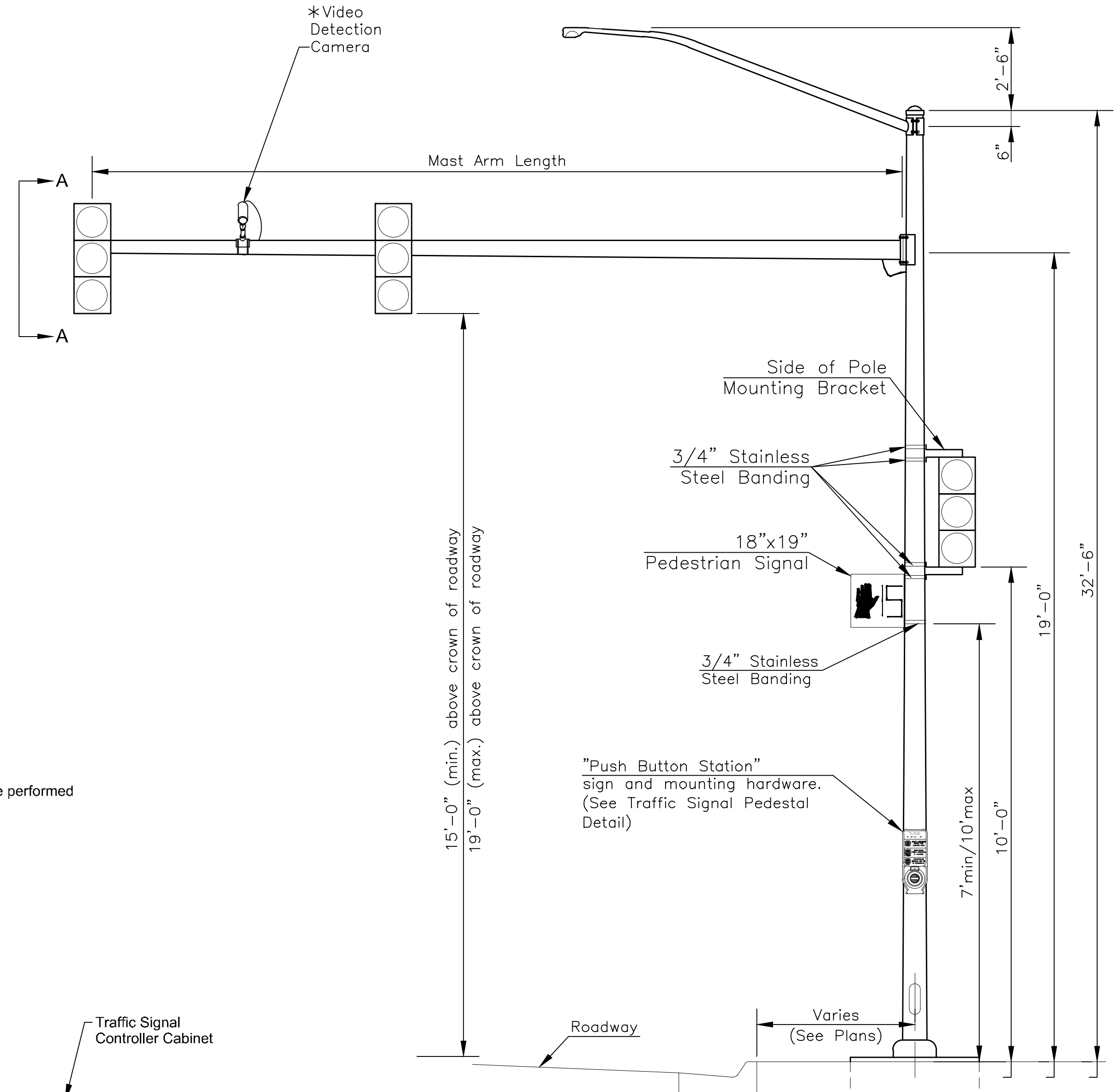
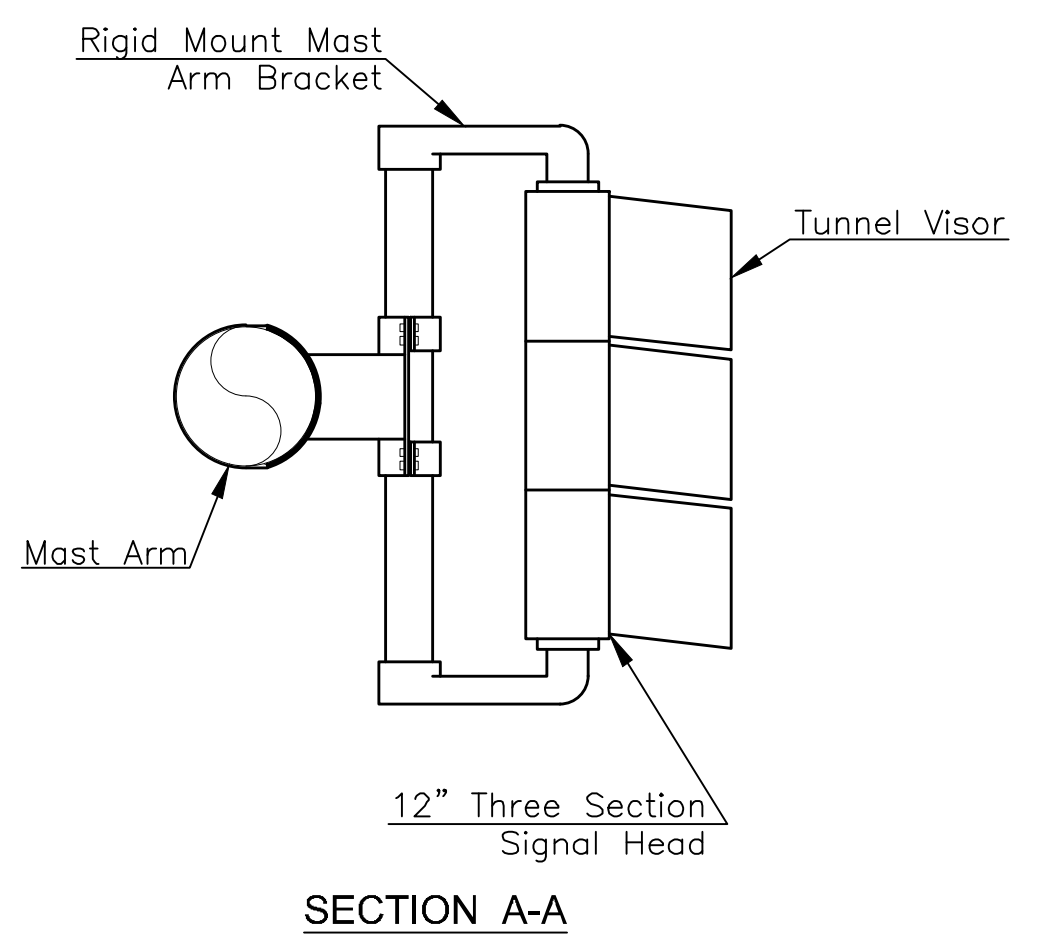
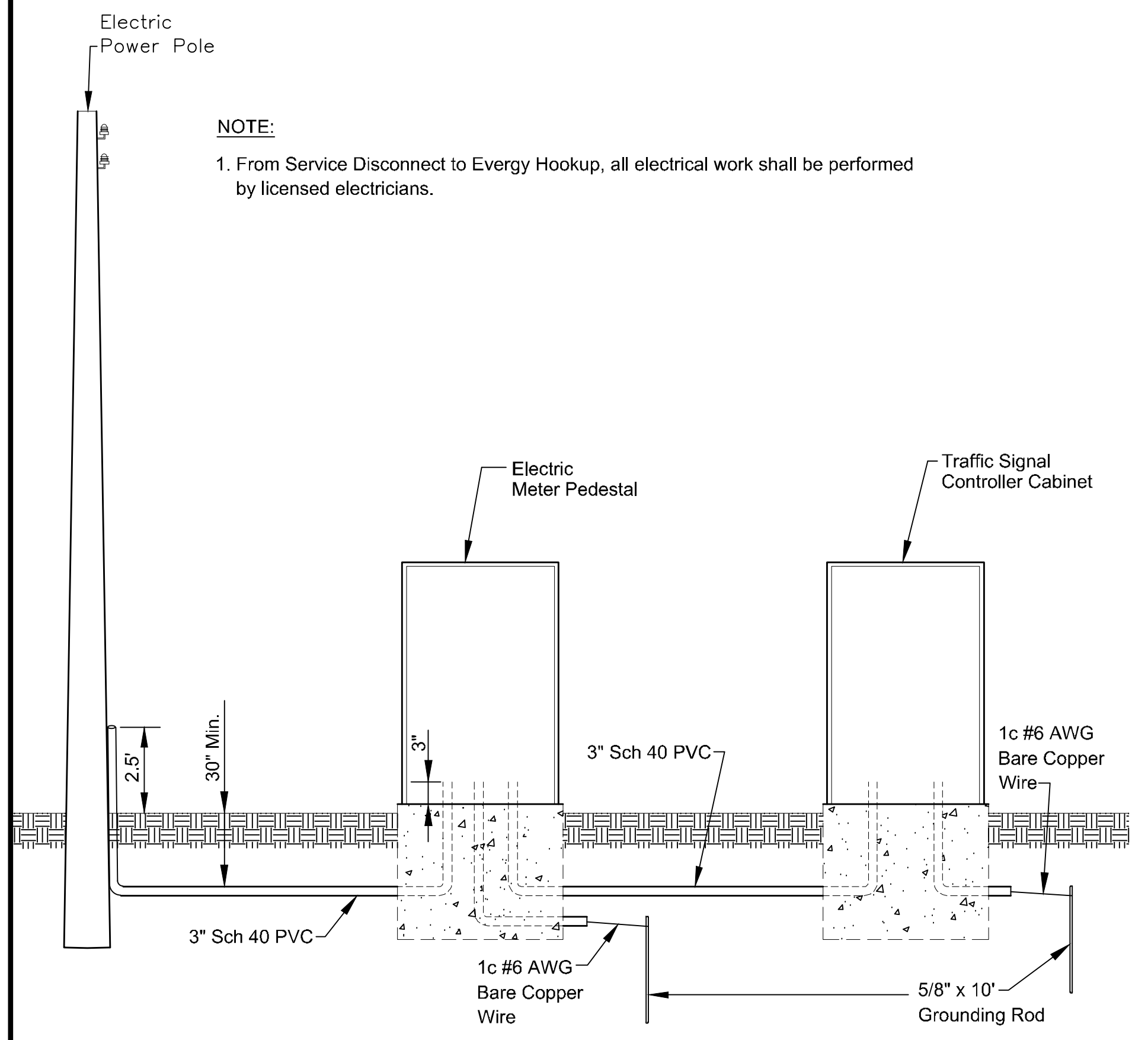


*NOTE:
Video Detection Camera locations will be as shown on plans or as directed by the Engineer.



NOTE:
1. From Service Disconnect to Every Hookup, all electrical work shall be performed by licensed electricians.

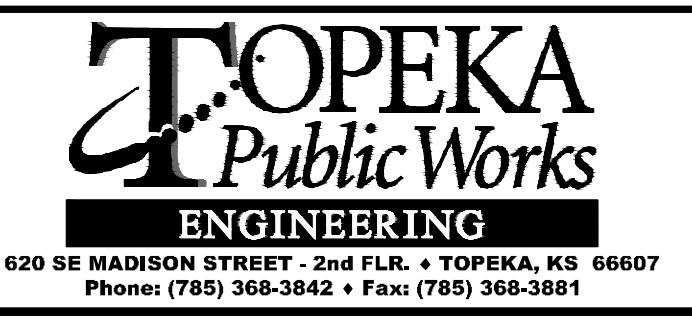


- NOTES:
1. See DT-103 A & B for additional pole details.
 2. Directional alignment of Vehicular and Pedestrian Signal Head and bracket to be determined in the field by the Engineer.
 3. Holes through in arms, poles, & pedestals shall be drilled, well reamed, and fitted with a wiring grommet to prevent the chafing of cables.
 4. When Black Semi Gloss is indicated, all exposed surfaces of the traffic signal and its appurtenances, including cabinets, brackets, banding, buckles, back-plates, sign backs, and fixtures shall have a finish color of BLACK (semi-gloss) Federal Standard 595 Color #27038 or approved equivalent.

NO.	DATE:	REVISION	BY:	APP'D
1	10/30/20	Revised Electrical Service Connection Added	SU	KRE
1	10/5/17	Updated Standard	DHS	TLC

EDITED BY: Shoeb Uddin
APP'D BY: Kristi Erickson

STEEL TRAFFIC SIGNAL POLE WITH MAST ARM



**STANDARD DETAILS
DT - 104**

**MAST ARM AND BASE
ELECTRICAL SERVICE CONNECTION**

DATE: _____
SHEET: _____
PROJ.: _____