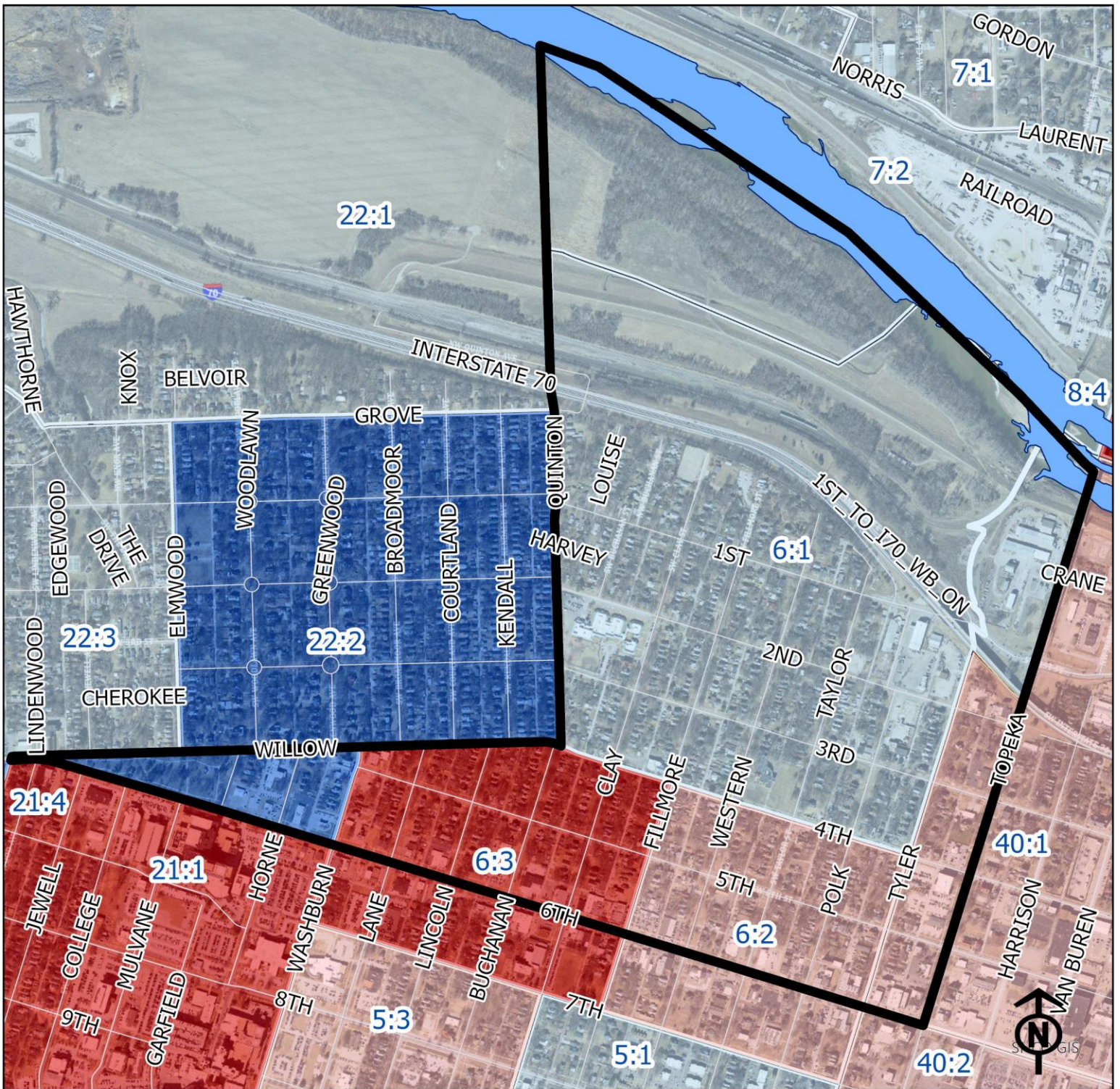


2023 Ward Meade Neighborhood Health



Block Groups

Legend

- Healthy
- Out Patient
- At Risk
- Intensive Care

"Vital Signs" Which Determine Neighborhood Health Include:

- 1) % of Persons Below Poverty Level
- 2) Part 1 Crimes Per Capita
- 3) Average Residential Property Values
- 4) % of Owner Occupied Homes
- 5) Number of Boarded Houses

WARD MEADE

Vital Signs	Block Group (Pop. 2022)	2000	2003	2007	2011	2014	2017	2020	2023
1) % Persons Below Poverty	6:1 (1,123)	17%	45%	45%	20%	15%	34%	24%	19%
	6:2 (392)	39%	23%	23%	19%	26%	38%	49%	27%
	6:3 (517)	9%	24%	24%	68%	90%	48%	22%	45%
2) Public Safety (Part 1 Crimes per 100 people)	6:1	(At Risk)	13	12	13	11	11	10	6
	6:2	(Intensive Care)	27	31	21	21	20	27	25
	6:3	(Intensive Care)	23	23	22	16	16	22	26
3) Average Residential Property Values	6:1	\$29,400	\$39,890	\$45,980	\$51,300	\$48,756	\$47,217	\$50,435	\$70,400
	6:2	\$23,960	\$22,890	\$33,730	\$40,980	\$38,647	\$38,505	\$44,496	\$64,140
	6:3	\$24,360	\$30,100	\$42,690	\$45,860	\$41,911	\$42,431	\$46,183	\$64,010
4) Single Family Home Ownership	6:1	47%	54%	56%	57%	53%	53%	55%	57%
	6:2	26%	32%	28%	39%	31%	44%	43%	45%
	6:3	41%	44%	39%	45%	35%	43%	44%	46%
5) Boarded Houses/Unsafe Structures	6:1	3	4	1	0	2	1.08	1.76	0.44
	6:2	7	6	1	2	0	1.20	2.40	0.81
	6:3	5	2	4	1	1	1.17	0.00	2.34
6) Neighborhood Health Composite (Rating)	6:1	2.0	2.2	2.6	2.8	3.0	2.4	2.4	2.8
	6:2	1.0	1.4	1.6	2.2	2.0	1.6	1.6	2.0
	6:3	1.8	2.0	2.0	2.0	2.0	2.0	2.4	1.6

- 1) Block Groups identified in Table 1 above represent 2000 & 2010 Census boundaries. Multiple Census Block Group data from the **2000 Neighborhood Health Map** (1990 Block Groups) are averaged in the Table to maintain simplicity. Refer to the Appendix of the Neighborhood Element for a complete breakdown of Block Groups by NIA.
- 2) Vital Signs are recorded by Census Block Group and do not necessarily conform to recognized neighborhood boundaries.
- 3) Refer to the Downtown neighborhood table for data for Block Group 40:1