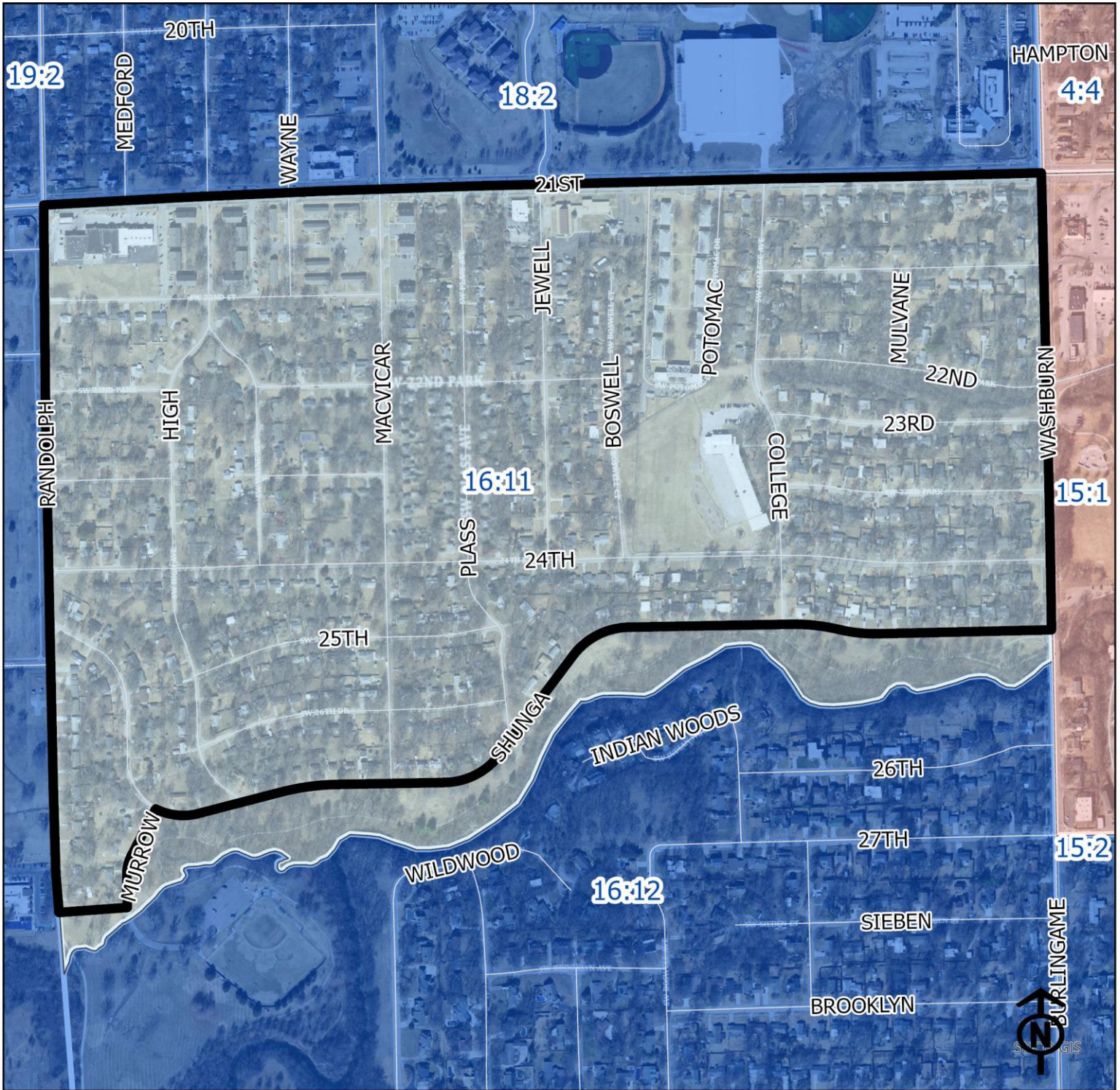


2023 Valley Park Neighborhood Health



Block Groups

Legend

- Healthy
- Out Patient
- At Risk
- Intensive Care

"Vital Signs" Which Determine Neighborhood Health Include:

- 1) % of Persons Below Poverty Level
- 2) Part 1 Crimes Per Capita
- 3) Average Residential Property Values
- 4) % of Owner Occupied Homes
- 5) Number of Boarded Houses

VALLEY PARK

Vital Signs	Block Group (Pop. 2022)	2000	2003	2007	2011	2014	2017	2020	2023
1) % Persons Below Poverty	16:11 (1,484)	7%	13%	13%	20%	29%	13%	8%	20%
2) Public Safety (Part 1 Crimes per 100 People)	16:11	(At Risk)	10	10	12	8	10	8	11
3) Average Residential Property Values	16:11	\$55,430	\$61,060	\$79,620	\$81,705	\$79,032	\$78,501	\$80,689	\$112,311
4) Single Family Home Ownership	16:11	64%	75%	70%	64%	60%	56%	54%	52%
5) Boarded Houses/Unsafe Structures	16:11	0	0	0	0	0	0.49	0.34	0.17
6) Neighborhood Health Composite (Rating)	16:11	3.2	3.6	3.6	3.2	3.2	3.2	3.4	3.0

1) Block Groups identified in Table 1 above represent 2000 & 2010 Census boundaries. Multiple Census Block Group data from the **2000 Neighborhood Health Map** (1990 Block Groups) are averaged in the Table to maintain simplicity. Refer to the Appendix of the Neighborhood Element for a complete breakdown of Block Groups by NIA.

2) Vital Signs are recorded by Census Block Group and do not necessarily conform to recognized neighborhood boundaries.