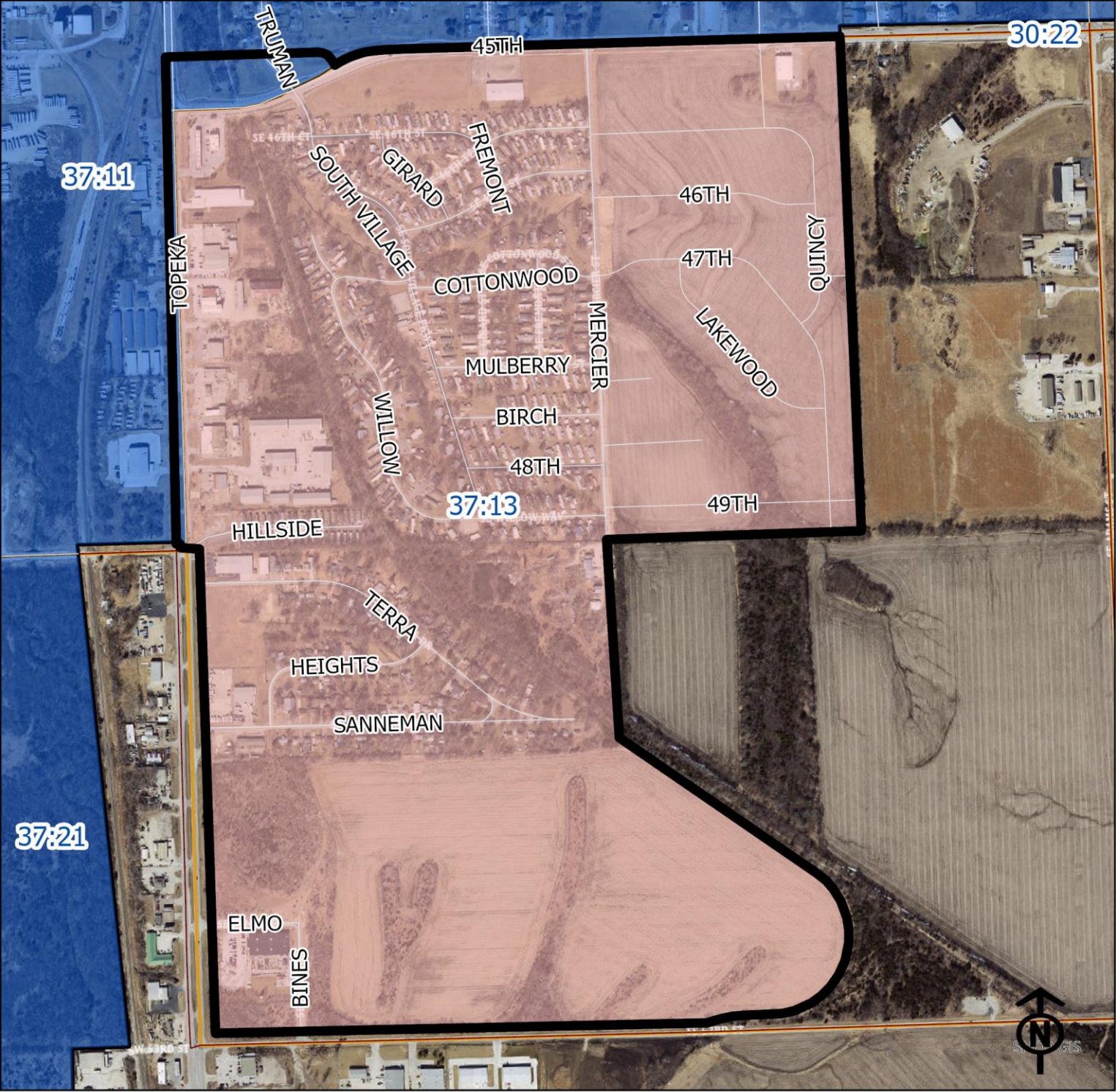


2023 SE 45th & Topeka Neighborhood Health



Legend

- Healthy
- Out Patient
- At Risk
- Intensive Care

"Vital Signs" Which Determine Neighborhood Health Include:

- 1) % of Persons Below Poverty Level
- 2) Part 1 Crimes Per Capita
- 3) Average Residential Property Values
- 4) % of Owner Occupied Homes
- 5) Number of Boarded Houses

Block Groups



45th & TOPEKA

Vital Signs	Block Group (Pop. 2022)	2000	2003	2007	2011	2014	2017	2020	2023
1) % Persons Below Poverty	37:13 (1,166)	Out Patient	10%	Out Patient	8%	28%	32%	25%	11%
2) Public Safety (Part 1 Crimes per 100 People)	37:3	Out Patient	5	5	7	7	8	8	5
3) Average Residential Property Values	37:3	Healthy	\$24,672	\$71,222	\$72,283	\$71,541	\$76,580.70	\$80,677.00	\$42,381
4) Single Family Home Ownership	37:3	Out Patient	44%	52%	48%	45%	47%	48%	44%
5) Boarded Houses/Unsafe Structures	37:3	Healthy	1	0	0	1	8.97	2.10	2.1
6) Neighborhood Health Composite (Rating)	37:3	Healthy	2.6	3.4	3.4	2.6	2.2	2.4	2.2

1) Block Groups identified in Table 1 above represent 2000 & 2010 Census boundaries. Multiple Census Block Group data from the **2000 Neighborhood Health Map** (1990 Block Groups) are averaged in the Table to maintain simplicity. Refer to the Appendix of the Neighborhood Element for a complete breakdown of Block Groups by NIA.

2) Vital Signs are recorded by Census Block Group and do not necessarily conform to recognized neighborhood boundaries.