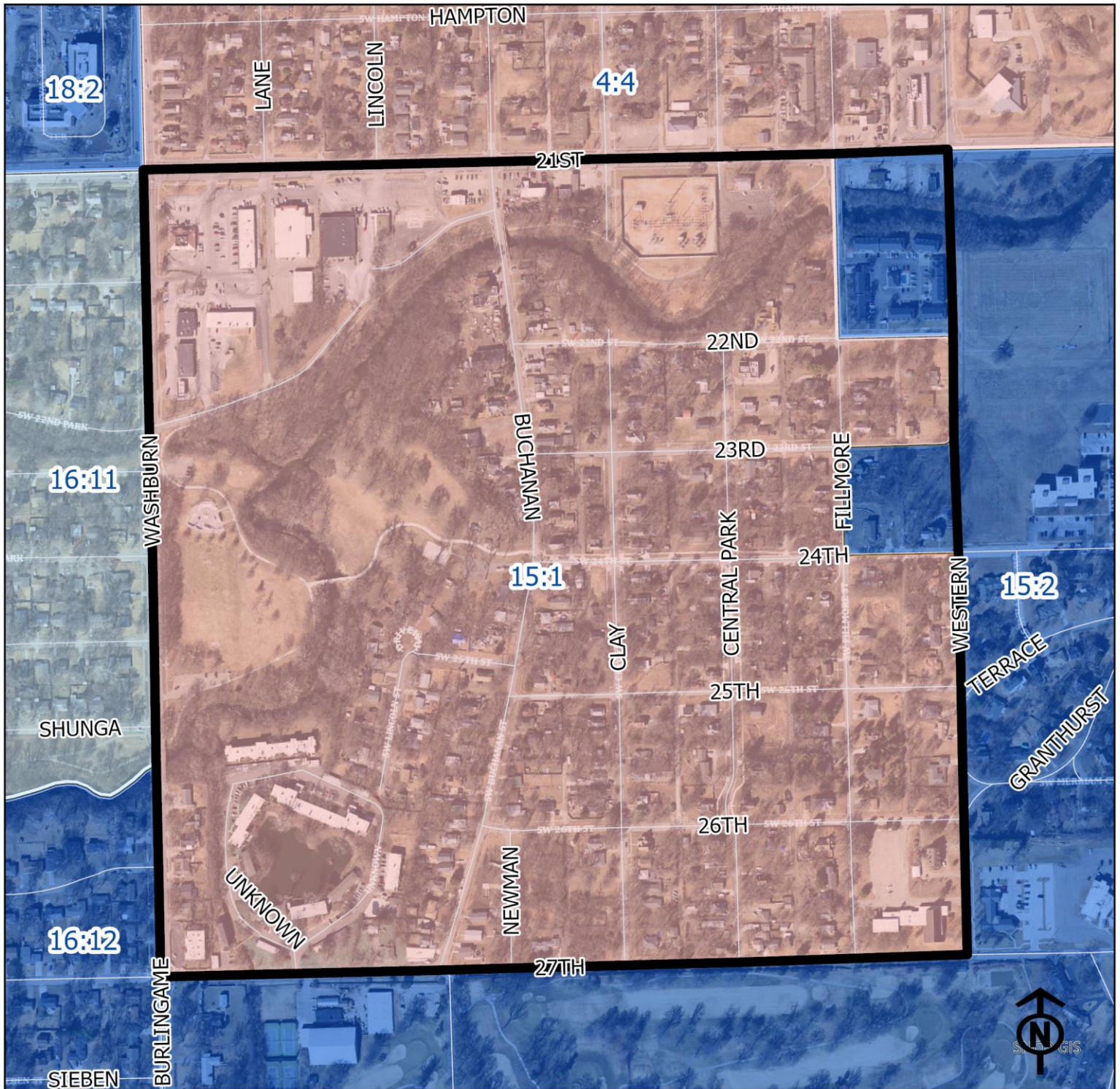


2023 Quinton Heights-Steele Neighborhood Health



Legend

- Healthy
- Out Patient
- At Risk
- Intensive Care

"Vital Signs" Which Determine Neighborhood Health Include:

- 1) % of Persons Below Poverty Level
- 2) Part 1 Crimes Per Capita
- 3) Average Residential Property Values
- 4) % of Owner Occupied Homes
- 5) Number of Boarded Houses

Block Groups



QUINTON HEIGHTS STEELE

| Vital Signs | Block Group (Pop. 2022) | 2000 | 2003 | 2007 | 2011 | 2014 | 2017 | 2020 | 2023 |
|---|-------------------------|-----------|----------|----------|----------|----------|----------|----------|----------|
| 1) % Persons Below Poverty | 15:1 (827) | 18% | 12% | 12% | 19% | 34% | 10% | 7% | 42% |
| 2) Public Safety (Part 1 Crimes per 100 People) | 15:1 | (At Risk) | 23 | 18 | 23 | 30 | 19 | 27 | 15 |
| 3) Average Residential Property Values | 15:1 | \$55,810 | \$36,940 | \$59,910 | \$62,625 | \$68,708 | \$70,103 | \$73,896 | \$97,116 |
| 4) Single Family Home Ownership | 15:1 | 59% | 65% | 54% | 58% | 52% | 50% | 50% | 52% |
| 5) Boarded Houses/Unsafe Structures | 15:1 | 0 | 2 | 0 | 1 | 1 | 0 | 1.46 | 1.1 |
| 6) Neighborhood Health Composite (Rating) | 15:1 | 2.8 | 2.6 | 3 | 2.4 | 2.0 | 3.0 | 2.8 | 2.4 |

1) Block Groups identified in Table 1 above represent 2000 & 2010 Census boundaries. Multiple Census Block Group data from the **2000**

Neighborhood Health Map (1990 Block Groups) are averaged in the Table to maintain simplicity. Refer to the Appendix of the Neighborhood Element for a complete breakdown of Block Groups by N/A.

2) Vital Signs are recorded by Census Block Group and do not necessarily conform to recognized neighborhood boundaries.