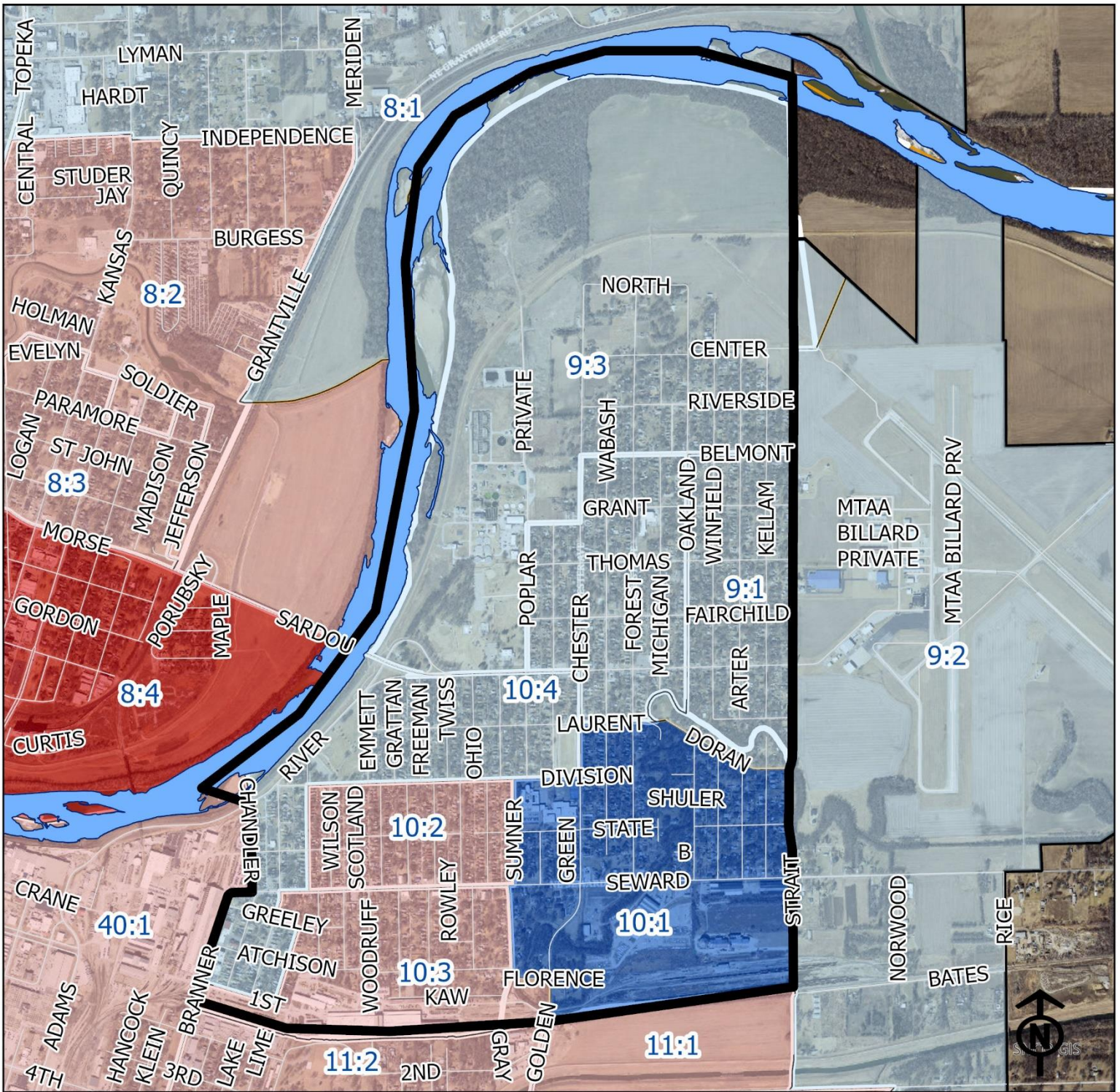


# 2023 Oakland Neighborhood Health



Block Groups

## Legend



"Vital Signs" Which Determine Neighborhood Health Include:

- 1) % of Persons Below Poverty Level
- 2) Part 1 Crimes Per Capita
- 3) Average Residential Property Values
- 4) % of Owner Occupied Homes
- 5) Number of Boarded Houses

OAKLAND

Vital Signs	Block Group (Pop. 2022)	2000	2003	2007	2011	2014	2017	2020	2023
1) % Persons Below Poverty	9:1 (685)	5%	1%	1%	39%	43%	12%	5%	5%
	9:3 (1,476)	4%	13%	13%	37%	10%	12%	11%	2%
	10:1 (487)	4%	8%	8%	18%	3%	12%	16%	14%
	10:2 (951)	6%	10%	10%	21%	36%	16%	9%	46%
	10:3 (448)	11%	12%	12%	36%	38%	7%	13%	30%
	10:4 (1,219)	6%	16%	16%	25%	25%	22%	13%	4%
2) Public Safety (Part 1 Crimes per 100 People)	9:1	(Healthy)	7	9	11	9	7	9	4
	9:3	(At Risk)	8	8	7	5	5	7	7
	10:1	(Out Patient)	11	13	10	10	8	9	10
	10:2	(Out Patient)	10	10	11	7	8	11	7
	10:3	(Healthy)	12	12	9	11	7	5	5
	10:4	(Out Patient)	9	9	9	8	7	8	5
3) Average Residential Property Values	9:1	\$46,200	\$55,540	\$63,240	\$65,900	\$63,277	\$62,826	\$66,318	\$72,820
	9:3	\$41,140	\$48,890	\$56,890	\$58,680	\$56,407	\$55,826	\$57,389	\$78,032
	10:1	\$41,050	\$48,560	\$60,170	\$63,910	\$63,643	\$63,467	\$68,848	\$89,023
	10:2	\$38,140	\$46,000	\$53,680	\$53,890	\$52,743	\$51,838	\$52,517	\$67,334
	10:3	\$36,240	\$43,400	\$47,350	\$54,100	\$63,125	\$61,463	\$56,462	\$72,657
	10:4	\$36,970	\$44,350	\$50,820	\$53,370	\$57,200	\$55,736	\$52,524	\$72,774



<b>4) Single Family Home Ownership</b>	9:1	77%	79%	70%	75%	66%	65%	63%	57%
	9:3	64%	72%	73%	70%	62%	61%	59%	63%
	10:1	54%	63%	68%	66%	61%	60%	60%	63%
	10:2	52%	64%	72%	63%	57%	53%	51%	51%
	10:3	47%	61%	65%	59%	58%	62%	61%	64%
	10:4	48%	62%	69%	68%	64%	64%	64%	64%
	9:1	0	0	0	0	1	0.39	0.40	0.25
<b>5) Boarded Houses/Unsafe Structures</b>	9:3	0	0	0	1	0	0.52	0.54	0.72
	10:1	1	0	2	0	0	0	0.49	0
	10:2	2	1	2	0	0	0.26	1.28	0.26
	10:3	1	2	0	0	0	0	0.33	0.33
	10:4	0	1	1	0	0	0.20	0.60	1.19
	9:1	3.6	3.8	3.8	3.0	2.6	3.0	3.2	3.2
	9:3	3.0	3.4	3.4	2.8	3.4	3.0	3.0	3.2
<b>6) Neighborhood Health Composite (Rating)</b>	10:1	3.0	3.2	2.8	3.2	3.4	3.2	3.0	3.4
	10:2	3.0	3.0	3.2	3.0	2.8	3.0	2.8	2.6
	10:3	2.8	3.0	3.2	2.8	2.8	3.4	3.0	2.6
	10:4	3.0	2.8	3.0	3.0	3.0	2.8	3.0	3.0

- 1) Block Groups identified in Table 1 above represent 2000 & 2010 Census boundaries. Multiple Census Block Group data from the **2000**
- 2) Vital Signs are recorded by Census Block Group and do not necessarily conform to recognized neighborhood boundaries.
- 3) Census Block Group 9:2 was realigned and removed from the Oakland NIA