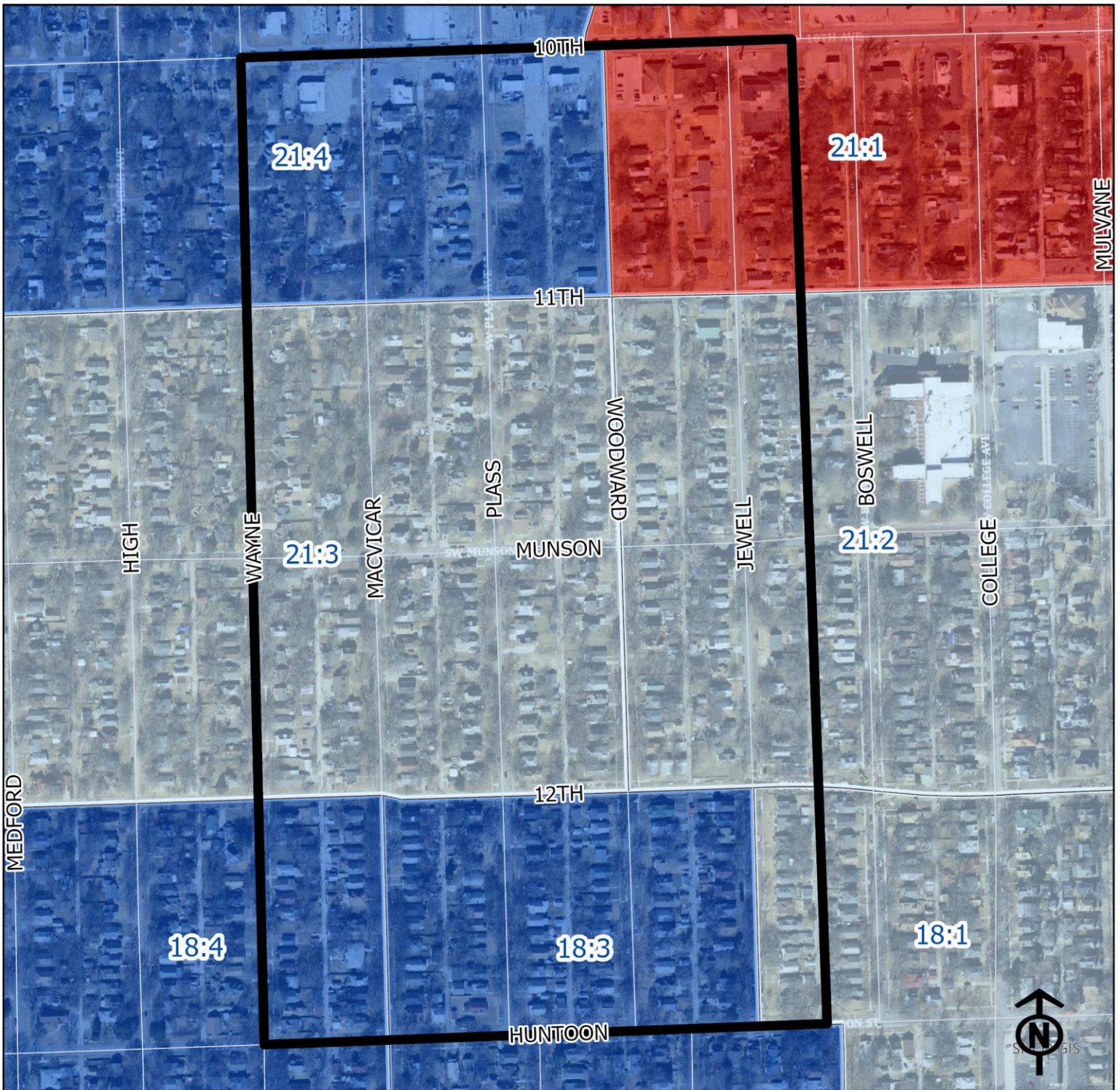


2023 Norton Neighborhood Health



Legend

- Healthy
- Out Patient
- At Risk
- Intensive Care

"Vital Signs" Which Determine Neighborhood Health Include:

- 1) % of Persons Below Poverty Level
- 2) Part 1 Crimes Per Capita
- 3) Average Residential Property Values
- 4) % of Owner Occupied Homes
- 5) Number of Boarded Houses

Block Groups

NORTON

Vital Signs	Block Group (Pop. 2022)	2000	2003	2007	2011	2014	2017	2020	2023
1) % Persons Below Poverty	18:1 (1,022)	Out Patient	14%	Out Patient	25%	20%	38%	12%	12%
	18:3 (900)	Healthy	2%	Healthy	9%	2%	4%	9%	9%
	18:4 (774)	Healthy	5%	Healthy	16%	3%	4%	9%	0%
	21:1 (887)	Out Patient	3%	At Risk	20%	25%	28%	42%	41%
2) Public Safety (Part 1 Crimes per 100 People)	21:2 (537)	Healthy	5%	Out Patient	5%	28%	29%	0%	3%
	21:3 (599)	At Risk	18%	Healthy	32%	34%	45%	19%	15%
	21:4 (964)	Healthy	2%	Healthy	17%	15%	6%	3%	7%
	18:1	At Risk	14	11	15	12	17	15	7
3) Average Residential Property Values	18:3	At Risk	8	11	8	7	8	6	4
	18:4	At Risk	12	10	10	7	8	7	5
	21:1	At Risk	33	23	25	30	32	18	22
	21:2	At Risk	13	12	10	10	12	12	10
	21:3	At Risk	9	10	8	9	6	7	6
	21:4	At Risk	20	24	15	11	9	9	11
	18:1	At Risk	\$61,828	\$68,299	\$70,728	\$67,263	\$65,351	\$71,810	\$104,053
	18:3	Out Patient	\$80,051	\$93,533	\$94,316	\$90,696	\$87,012	\$93,416	\$133,439
	18:4	Out Patient	\$76,404	\$89,809	\$90,341	\$86,756	\$84,199	\$89,605	\$128,598
	21:1	At Risk	\$65,445	\$55,475	\$60,221	\$57,715	\$54,904	\$59,774	\$85,148
	21:2	At Risk	\$47,242	\$54,905	\$61,558	\$59,392	\$53,455	\$58,089	\$83,901
	21:3	At Risk	\$61,253	\$71,353	\$71,251	\$68,398	\$65,503	\$69,568	\$100,547
21:4	Out Patient	\$65,445	\$74,765	\$77,199	\$74,385	\$72,085	\$75,443	\$106,643	

4) Single Family Home Ownership	18:1	Healthy	80%	73%	70%	59%	61%	59%	61%
	18:3	Healthy	86%	84%	81%	79%	75%	73%	73%
	18:4	Healthy	84%	80%	78%	73%	71%	69%	69%
	21:1	At Risk	50%	56%	58%	53%	52%	47%	49%
5) Boarded Houses/Unsafe Structures	21:2	Out Patient	67%	58%	58%	53%	50%	49%	49%
	21:3	Healthy	82%	73%	69%	68%	61%	60%	61%
	21:4	Out Patient	73%	73%	69%	65%	61%	61%	59%
	18:1	Out Patient	2	0	0	3	0.24	0.73	0.48
	18:3	Healthy	0	0	1	1	0.36	0.36	0.37
	18:4	Healthy	1	0	1	0	0.49	0.00	0.25
	21:1	Out Patient	1	3	2	0	0.50	1.10	2.03
	21:2	Out Patient	3	0	0	2	0	1.19	0.4
	21:3	Healthy	0	1	0	1	0.37	0	0.37
	21:4	Out Patient	0	1	1	2	0	0	0.46
	18:1	Out Patient	3.2	3.6	3.2	2.8	2.4	2.8	3.2
	6) Neighborhood Health Composite (Rating)	18:3	Healthy	3.8	4	3.6	3.6	3.6	3.4
18:4		Healthy	3.6	3.8	3.4	3.8	3.6	3.6	3.4
21:1		At Risk	2.8	2.6	2.4	2.4	2.2	2.0	1.8
21:2		Out Patient	2.8	3.4	3.4	2.8	3.0	3.0	3.2
21:3		Healthy	3.4	3.2	3	2.6	2.6	3.0	3.2
21:4		Out Patient	3.6	3.2	3	3.2	3.6	3.6	3.4

1) Block Groups identified in Table 1 above represent 2000 & 2010 Census boundaries. Multiple Census Block Group data from the **2000 Neighborhood Health Map** (1990 Block Groups) are averaged in the Table to maintain simplicity. Refer to the Appendix of the Neighborhood Element for a complete breakdown of Block Groups by NIA.

2) Vital Signs are recorded by Census Block Group and do not necessarily conform to recognized neighborhood boundaries.