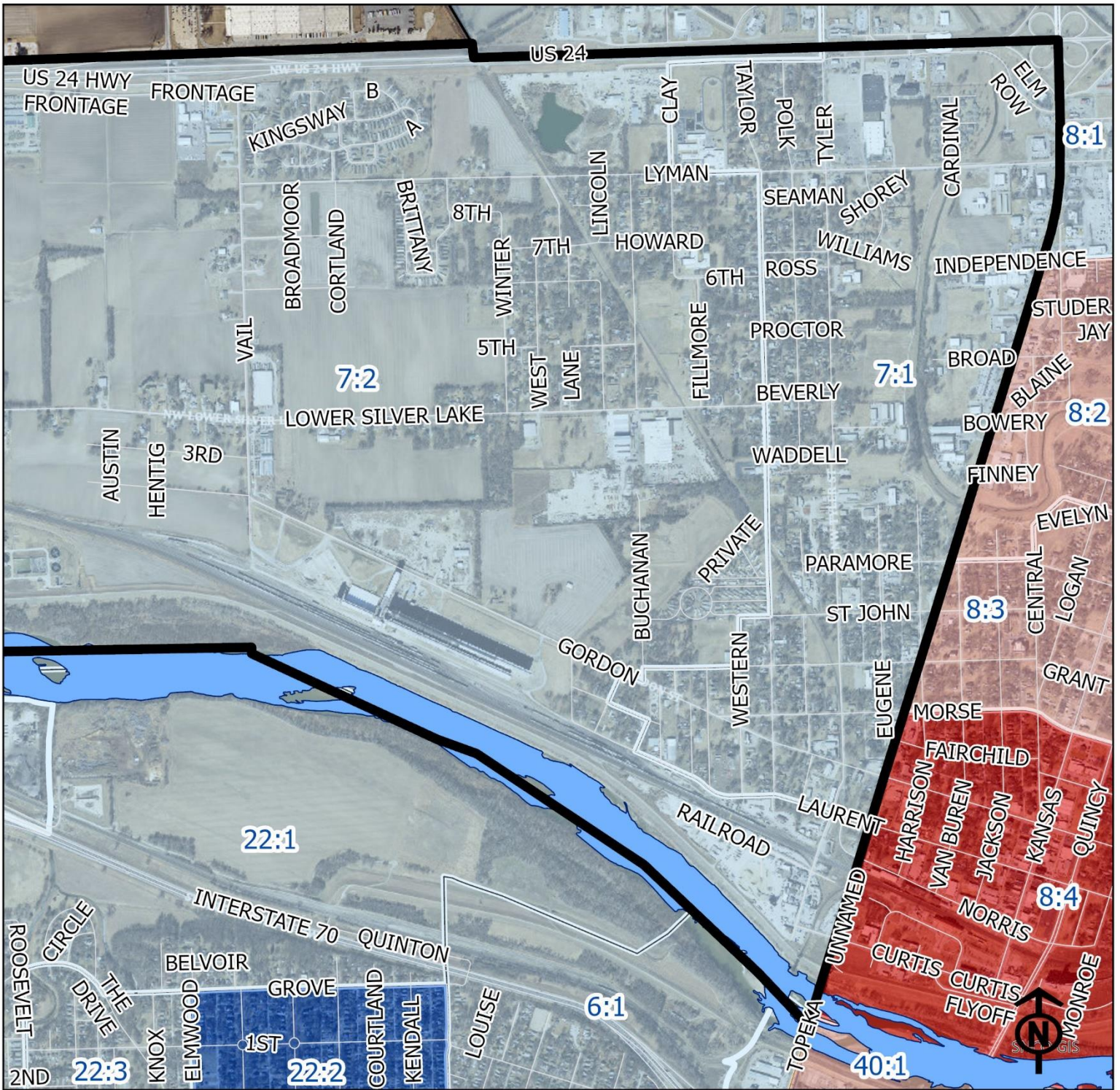


2023 North Topeka West Neighborhood Health



Block Groups

Legend

- Healthy
- Out Patient
- At Risk
- Intensive Care

"Vital Signs" Which Determine Neighborhood Health Include:

- 1) % of Persons Below Poverty Level
- 2) Part 1 Crimes Per Capita
- 3) Average Residential Property Values
- 4) % of Owner Occupied Homes
- 5) Number of Boarded Houses

NORTH TOPEKA WEST

Vital Signs	Block Group (Pop. 2022)	2000	2003	2007	2011	2014	2017	2020	2023
1) % Persons Below Poverty	7:1 (917)	24%	13%	13%	22%	40%	27%	5%	4%
	7:2 (1,384)	Healthy	(Out Patient)	13%	17%	15%	17%	5%	16%
2) Public Safety (Part 1)	7:1	(Out Patient)	33	36	44	40	40	41	44
Crimes per 100 People)	7:2	(Out Patient)	(Healthy)	(Healthy)	15	12	13	15	13
3) Average Residential Property Values	7:1	\$38,680	\$44,250	\$49,760	\$61,300	\$61,258	\$64,256	\$75,401	\$94,532
	7:2	(Out Patient)	\$66,172	\$66,172	\$88,448	\$90,975	\$77,852	\$106,332	\$112,142
4) Single Family Home Ownership	7:1	61%	63%	52%	65%	60%	64%	63%	60%
	7:2	(Healthy)	84%	84%	77%	68%	72%	72%	73%
5) Boarded Houses/Unsafe	7:1	1	5	3	3	1	0.58	0.88	0.59
	7:2	0	1	1	0	0	1.58	0.77	0.31
6) Neighborhood Health Composite	7:1	2.6	2.2	2.2	2.0	2.0	2.2	2.6	2.8
	7:2	3.6	3.4	3.4	3.4	3.4	3.0	3.2	3.2

1) Block Groups identified in Table 1 above represent 2000 & 2010 Census boundaries. Multiple Census Block Group data from the **2000 Neighborhood Health Map** (1990 Block Groups) are averaged in the Table to maintain simplicity. Refer to the Appendix of the Neighborhood Element for a complete breakdown of Block Groups by NIA.

2) Vital Signs are recorded by Census Block Group and do not necessarily conform to recognized neighborhood boundaries.