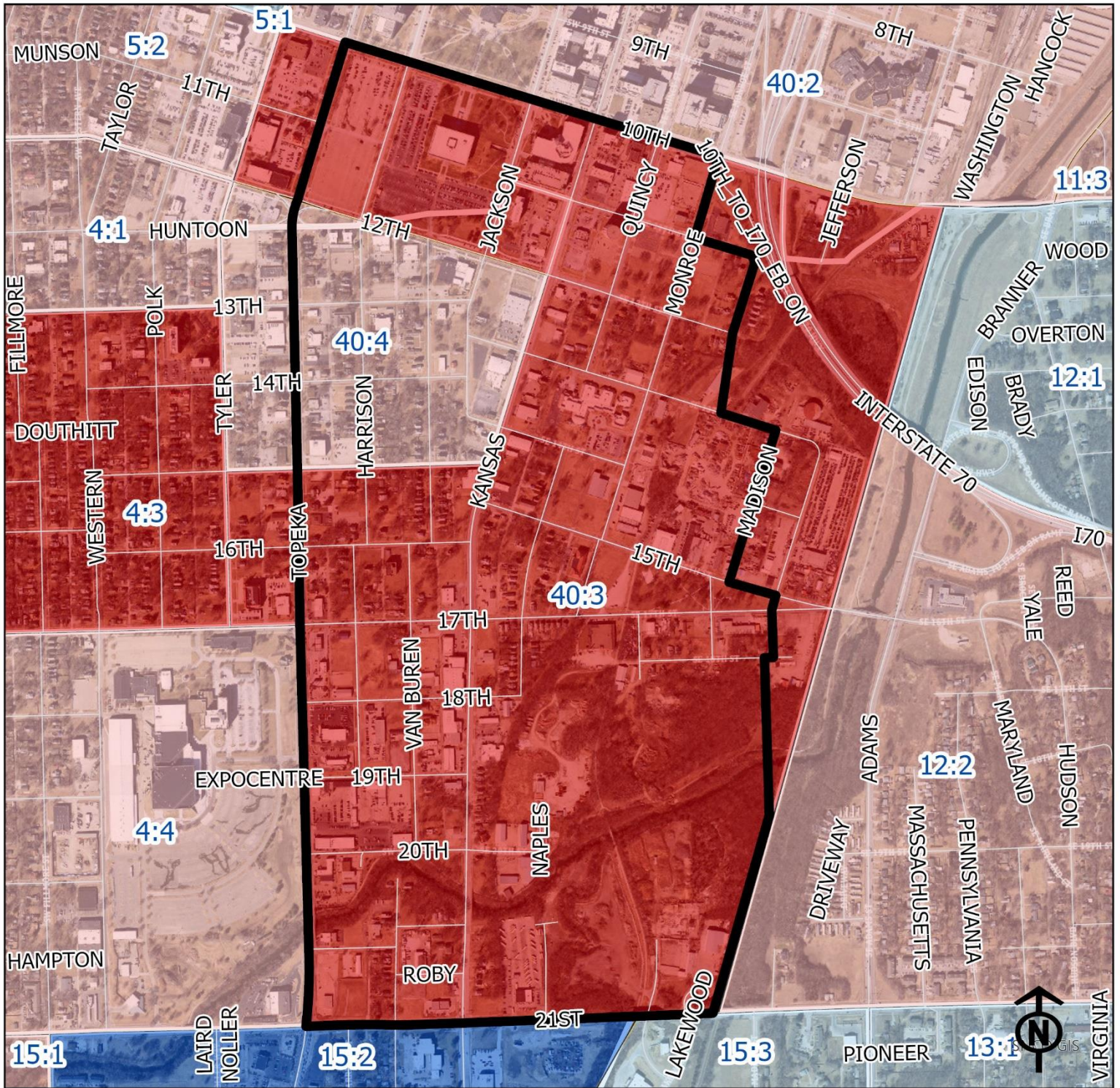


2023 Monroe Neighborhood Health



Block Groups

Legend

- Healthy
- Out Patient
- At Risk
- Intensive Care

"Vital Signs" Which Determine Neighborhood Health Include:

- 1) % of Persons Below Poverty Level
- 2) Part 1 Crimes Per Capita
- 3) Average Residential Property Values
- 4) % of Owner Occupied Homes
- 5) Number of Boarded Houses

MONROE

Vital Signs	Block Group (Pop. 2022)	2000	2003	2007	2011	2014	2017	2020	2023
1) % Persons Below Poverty	40:3 (650)	36%	42%	42%	54%	58%	45%	23%	29%
	40:4 (162)	40%	38%	38%	21%	81%	82%	49%	19%
2) Public Safety (Part 1)	40:3	(Out Patient)	39	49	41	37	41	70	44
Crimes per 100 People)	40:4	(At Risk)	30	26	24	17	17	17	53
3) Average Residential Property Values	40:3	\$14,340	\$18,010	\$23,445	\$35,460	\$36,848	\$36,436	\$37,764	\$77,048
	40:4	\$74,040	\$61,030	\$66,270	\$97,440	\$103,924	\$107,551	\$122,006	\$112,733
4) Single Family Home Ownership	40:3	27%	33%	27%	44%	39%	39%	42%	44%
	40:4	40%	53%	22%	55%	34%	52%	47%	41%
5) Boarded Houses/Unsafe Structures	40:3	8	2	2	0	3	1.13	0.65	2.19
	40:4	2	1	0	0	7	0.99	2.02	0
6) Neighborhood Health Composite (Rating)	40:3	1.6	1.4	1.4	1.8	1.4	1.4	1.8	1.6
	40:4	2.4	2.2	2.2	2.8	2.0	2.6	2.2	2.4

- 1) Block Groups identified in Table 1 above represent 2000 & 2010 Census boundaries. Multiple Census Block Group data from the **2000 Neighborhood Health Map** (1990 Block Groups) are averaged in the Table to maintain simplicity. Refer to the Appendix of the Neighborhood Element for a complete breakdown of Block Groups by NIA.
- 2) Vital Signs are recorded by Census Block Group and do not necessarily conform to recognized neighborhood boundaries.