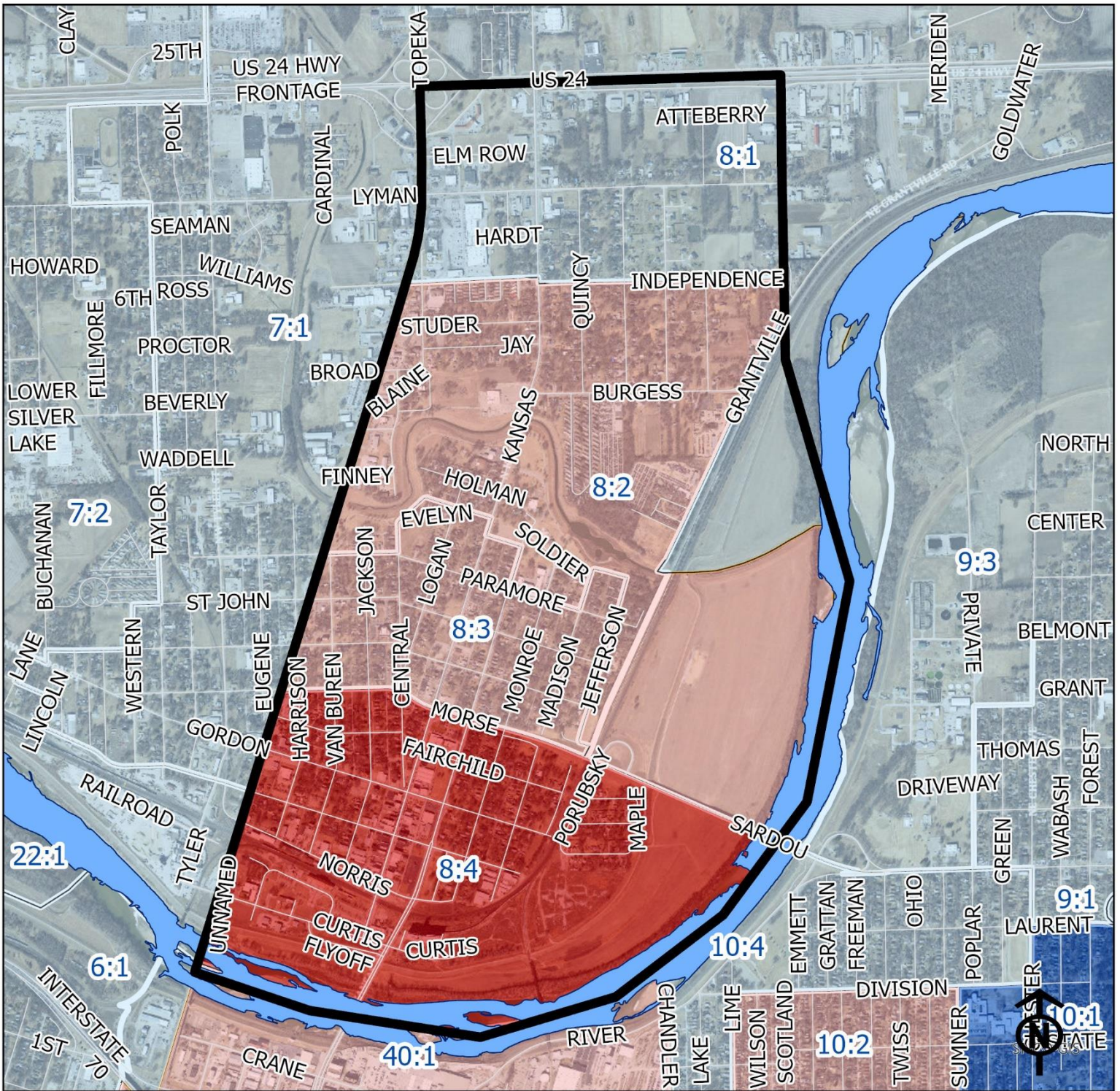


2023 Historic North Topeka East Neighborhood Health



Legend

- Healthy
- Out Patient
- At Risk
- Intensive Care

"Vital Signs" Which Determine Neighborhood Health Include:

- 1) % of Persons Below Poverty Level
- 2) Part 1 Crimes Per Capita
- 3) Average Residential Property Values
- 4) % of Owner Occupied Homes
- 5) Number of Boarded Houses

Block Groups



HISTORIC NORTH TOPEKA EAST

Vital Signs	Block Group (Pop. 2022)	2000	2003	2007	2011	2014	2017	2020	2023
1) % Persons Below Poverty	8:1 (818)	(Healthy)	9%	8%	26%	44%	20%	11%	11%
	8:2 (569)	9%	17%	17%	20%	33%	7%	17%	13%
	8:3 (919)	23%	24%	24%	33%	15%	28%	28%	15%
	8:4 (1,419)	19%	28%	28%	36%	46%	51%	29%	34%
2) Public Safety (Part 1 Crimes per 100 People)	8:1	(Out Patient)	(At Risk)	(Intensive Care)	20	18	21	34	18
	8:2	(At Risk)	21	18	17	14	14	16	19
	8:3	(At Risk)	11	23	14	15	18	13	10
	8:4	(Out Patient)	38	43	29	23	26	15	14
3) Average Residential Property Values	8:1	Out Patient	\$90,727	\$90,727	\$102,149	\$96,824	\$87,365	\$107,956	\$120,015
	8:2	\$45,450	\$46,920	\$55,720	\$64,330	\$61,928	\$57,390	\$67,221	\$81,581
	8:3	\$23,030	\$27,790	\$34,340	\$36,600	\$35,840	\$37,776	\$39,991	\$53,526
	8:4	\$18,780	\$23,120	\$24,190	\$29,490	\$27,918	\$28,214	\$29,930	\$42,813
4) Single Family Home Ownership	8:1	(Out Patient)	77%	77%	80%	69%	70%	70%	73%
	8:2	77%	63%	63%	67%	59%	59%	59%	60%
	8:3	53%	54%	49%	53%	50%	49%	47%	47%
	8:4	38%	42%	38%	47%	42%	44%	44%	47%
5) Boarded Houses/Unsafe Structures	8:1	1-2	0	0	0	0	0.71	0.61	3.32
	8:2	1	0	0	1	1	0	2	0.64
	8:3	2	6	3	3	6	0.92	2.23	2.07
	8:4	6	4	3	11	3	2.50	1.95	1.25
6) Neighborhood Health Composite (Rating)	8:1	3.2	3.4	3.0	3.0	2.8	2.8	2.8	2.8
	8:2	2.8	2.6	2.8	2.6	2.4	3.2	2.6	2.6
	8:3	2.2	2.2	1.8	2.0	2.2	2.2	1.8	2.4
	8:4	1.8	1.4	1.4	1.4	1.6	1.4	1.8	1.8

1) Block Groups identified in Table 1 above represent 2000 & 2010 Census boundaries. Multiple Census Block Group data from the **2000 Neighborhood Health Map** (1990 Block Groups) are averaged in the Table to maintain simplicity. Refer to the Appendix of the Neighborhood Element for a complete breakdown of Block Groups by NIA.

2) Vital Signs are recorded by Census Block Group and do not necessarily conform to recognized neighborhood boundaries.