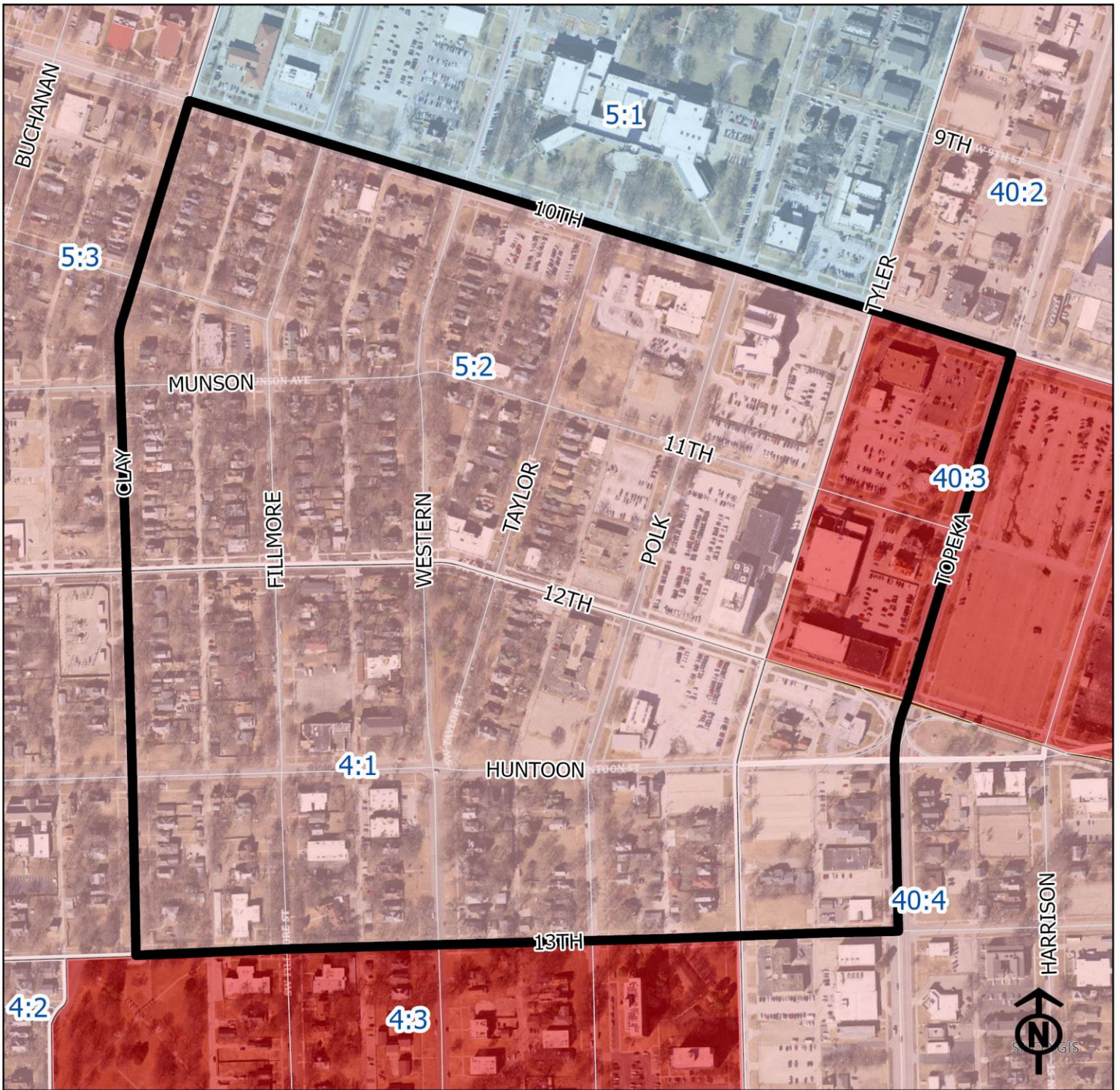


2023 Historic Holliday Park Neighborhood Health



Legend

- Healthy
- Out Patient
- At Risk
- Intensive Care

"Vital Signs" Which Determine Neighborhood Health Include:

- 1) % of Persons Below Poverty Level
- 2) Part 1 Crimes Per Capita
- 3) Average Residential Property Values
- 4) % of Owner Occupied Homes
- 5) Number of Boarded Houses

Block Groups

HISTORIC HOLLIDAY PARK

Vital Signs	Block Group (Pop. 2022)	2000	2003	2007	2011	2014	2017	2020	2023
1) % Persons Below Poverty	4:1 (544)	21%	33%	33%	22%	18%	17%	48%	68%
	5:2 (301)	18%	29%	29%	12%	31%	22%	6%	39%
2) Public Safety (Part 1)	4:1	(Intensive Care)	46	42	47	28	20	29	17
Crimes per 100 People)	5:2	(Intensive Care)	38	24	29	18	18	21	17
3) Average Residential Property Values	4:1	\$30,730	\$29,160	\$44,070	\$54,590	\$50,688	\$48,209	\$54,233	\$75,573
	5:2	\$41,000	\$42,380	\$55,455	\$64,350	\$64,670	\$59,528	\$68,209	\$97,842
4) Single Family Home Ownership	4:1	39%	43%	36%	47%	34%	42%	45%	48%
	5:2	56%	62%	42%	58%	45%	52%	48%	52%
5) Boarded Houses/Unsafe Structures	4:1	4	3	1	1	1	1.00	2.00	1.67
	5:2	2	0	0	3	0	0	0	1.21
6) Neighborhood Health Composite (Rating)	4:1	1.8	1.4	1.8	2.0	2.4	2.2	1.4	2.0
	5:2	2.2	2.2	2.2	2.4	2.6	2.8	2.8	2.4

1) Block Groups identified in Table 1 above represent 2000 & 2010 Census boundaries. Multiple Census Block Group data from the **2000 Neighborhood Health Map** (1990 Block Groups) are averaged in the Table to maintain simplicity. Refer to the Appendix of the Neighborhood Element for a complete breakdown of Block Groups by NIA.

2) Vital Signs are recorded by Census Block Group and do not necessarily conform to recognized neighborhood boundaries.