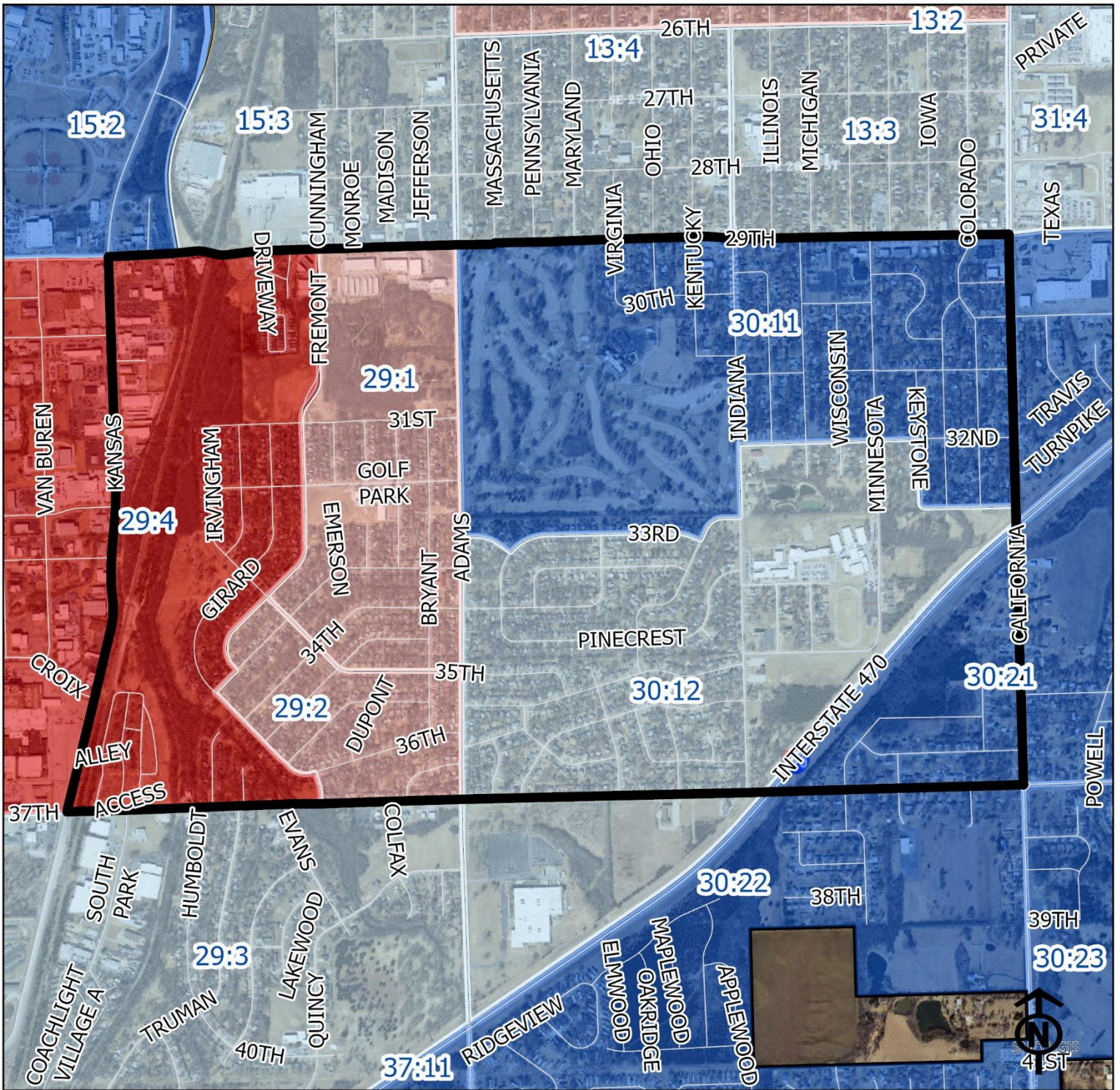


2023 Highland Crest Neighborhood Health



Block Groups

Legend

- Healthy
- Out Patient
- At Risk
- Intensive Care

"Vital Signs" Which Determine Neighborhood Health Include:

- 1) % of Persons Below Poverty Level
- 2) Part 1 Crimes Per Capita
- 3) Average Residential Property Values
- 4) % of Owner Occupied Homes
- 5) Number of Boarded Houses

HIGHLAND CREST

Vital Signs	Block Group (Pop. 2022)	2000	2003	2007	2011	2014	2017	2020	2023
1) % Persons Below Poverty	29:1 (749)	33%	30%	30%	58%	68%	27%	26%	18%
	29:2 (570)	35%	27%	27%	50%	82%	65%	30%	30%
	29:4 (826)	26%	23%	23%	54%	63%	48%	59%	43%
	30:011 (1,509)	9%	14%	14%	19%	25%	15%	20%	12%
	30:012 (2,279)	5%	19%	19%	20%	32%	26%	15%	3%
2) Public Safety (Part 1 Crimes per 100 People)	29:1	(At Risk)	33	24	17	15	15	8	10
	29:2	(Intensive Care)	13	15	17	15	12	15	10
	29:4	(Intensive Care)	42	37	36	32	34	82	82
	30:011	(Out Patient)	33	20	18	11	11	13	11
	30:012	(Out Patient)	13	9	10	9	6	4	3
3) Average Residential Property Values	29:1	\$19,115	\$18,870	\$24,510	\$26,205	\$24,606	\$24,656	\$26,678	\$39,372
	29:2	\$16,020	\$17,270	\$21,210	\$21,940	\$20,647	\$20,730	\$22,601	\$34,313
	29:4	\$2,330	\$21,585	\$29,390	\$32,180	\$30,028	\$27,394	\$31,801	\$41,537
	30:011	\$49,510	\$54,690	\$70,510	\$74,750	\$70,755	\$71,780	\$77,444	\$106,194
	30:012	\$44,400	\$49,740	\$58,680	\$62,095	\$58,923	\$57,174	\$60,865	\$84,580
4) Single Family Home Ownership	29:1	32%	32%	32%	32%	30%	28%	27%	31%
	29:2	33%	36%	34%	32%	32%	33%	34%	36%
	29:4	44%	43%	33%	34%	33%	35%	33%	37%
	30:011	67%	80%	68%	69%	60%	61%	60%	62%
	30:012	67%	72%	68%	64%	61%	58%	58%	59%
5) Boarded Houses/Unsafe Structures	29:1	4	12	4	3	4	1.43	0.86	1.43
	29:2	2	0	4	2	1	1.88	2.26	0.38
	29:4	3	4	3	0	0	2.21	0.99	0.74
	30:011	0	5	3	0	3	0.17	0.68	0
	30:012	0	4	3	1	1	0.44	0.58	0.88
6) Neighborhood Health Composite (Rating)	29:1	1.4	1.0	1.4	1.6	1.6	1.8	2.0	2.2
	29:2	1.4	2.2	1.6	1.8	1.8	1.6	1.6	2.2
	29:4	1.4	1.6	1.4	1.8	1.6	1.2	1.2	1.6
	30:011	3.2	2.6	2.6	3.0	2.6	3.2	2.8	3.4
	30:012	3.2	2.6	2.6	2.8	2.8	2.8	3.0	3.0

- 1) Block Groups identified in Table 1 above represent 2000 & 2010 Census boundaries. Multiple Census Block Group data from the **2000 Neighborhood Health Map** (1990 Block Groups) are averaged in the Table to maintain simplicity. Refer to the Appendix of the Neighborhood Element for a complete breakdown of Block Groups by NIA.
- 2) Vital Signs are recorded by Census Block Group and do not necessarily conform to recognized neighborhood boundaries.