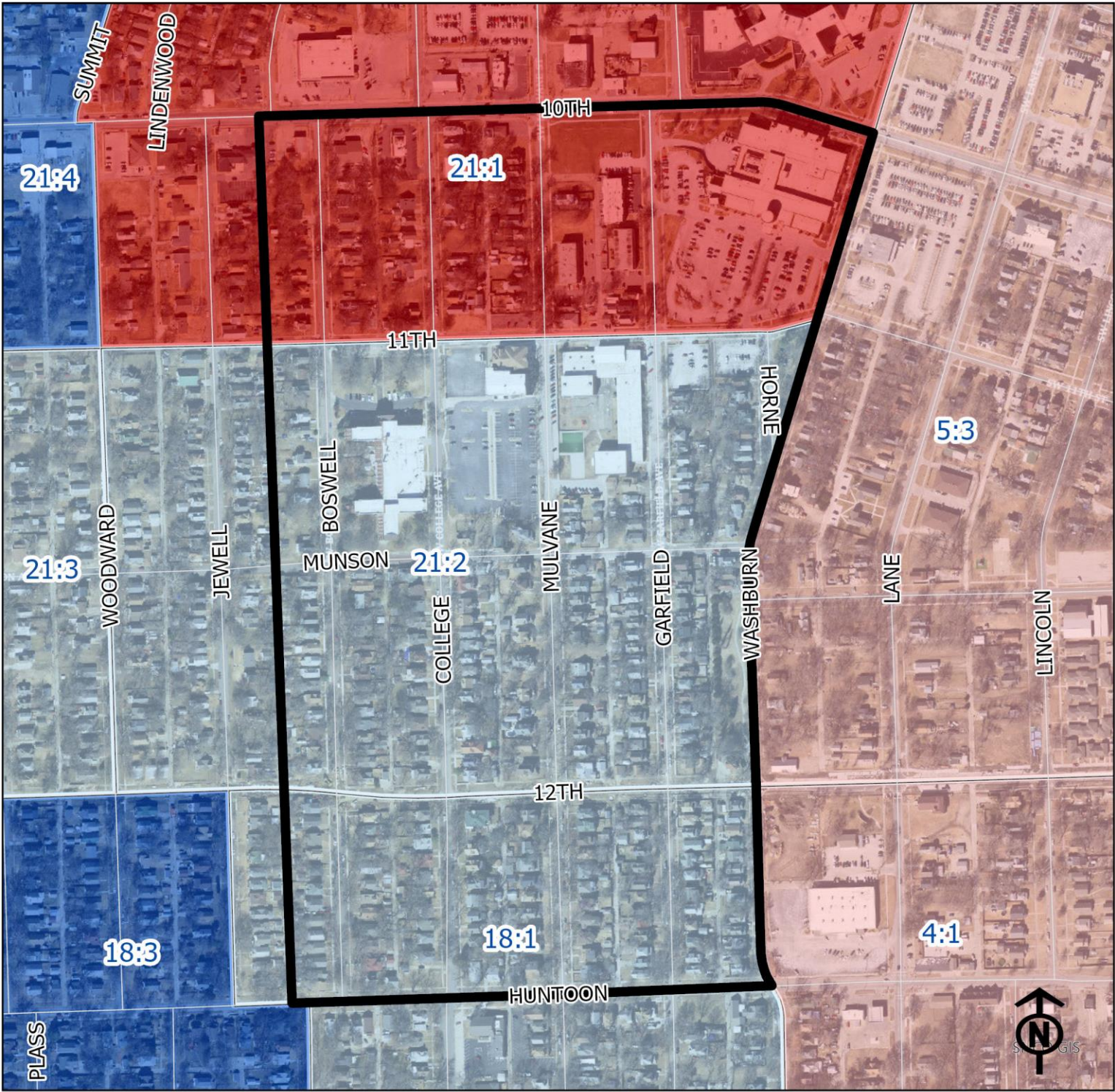


2023 Elmhurst Neighborhood Health



Block Groups

Legend

- Healthy
- Out Patient
- At Risk
- Intensive Care

"Vital Signs" Which Determine Neighborhood Health Include:

- 1) % of Persons Below Poverty Level
- 2) Part 1 Crimes Per Capita
- 3) Average Residential Property Values
- 4) % of Owner Occupied Homes
- 5) Number of Boarded Houses

ELMHURST

Vital Signs	Block Group (Pop. 2022)	2000	2003	2007	2011	2014	2017	2020	2023
1) % Persons Below Poverty	18:1 (1,022)	Out Patient	14%	Out Patient	25%	20%	38%	12%	12%
	21:1 (887)	Out Patient	3%	At Risk	20%	25%	28%	42%	41%
	21:2 (537)	Healthy	5%	Out Patient	5%	28%	29%	0%	3%
2) Public Safety (Part 1 Crimes per 100 People)	18:1	At Risk	21	11	14	12	17	15	7
	21:1	At Risk	33	23	25	30	32	18	22
	21:2	At Risk	13	12	10	10	12	12	10
3) Average Residential Property Values	18:1	At Risk	\$61,828	\$68,299	\$70,728	\$67,263	\$65,351	\$71,810	\$104,053
	21:1	At Risk	\$65,445	\$55,475	\$60,221	\$57,715	\$54,904	\$59,774	\$85,148
	21:2	At Risk	\$47,242	\$54,905	\$61,558	\$59,392	\$53,455	\$58,089	\$83,901
4) Single Family Home Ownership	18:1	Healthy	80%	73%	70%	59%	61%	59%	61%
	21:1	At Risk	50%	56%	58%	53%	52%	47%	49%
	21:2	Out Patient	67%	58%	58%	53%	50%	49%	49%
5) Boarded Houses/Unsafe Structures	18:1	Out Patient	2	0	0	3	0.24	0.73	0.48
	21:1	Out Patient	1	3	2	0	0.50	1.01	2.02
	21:2	Out Patient	3	0	0	2	0	1.19	0.4
6) Neighborhood Health Composite (Rating)	18:1	Out Patient	3.2	3.6	3.2	2.8	2.4	2.8	3.2
	21:1	At Risk	2.8	2.6	2.4	2.4	2.2	2.0	1.8
	21:2	Out Patient	2.8	3.4	3.4	2.8	3.0	3.0	3.2

1) Block Groups identified in Table 1 above represent 2000 & 2010 Census boundaries. Multiple Census Block Group data from the **2000 Neighborhood Health Map** (1990 Block Groups) are averaged in the Table to maintain simplicity. Refer to the Appendix of the Neighborhood Element for a complete breakdown of Block Groups by NIA.

2) Vital Signs are recorded by Census Block Group and do not necessarily conform to recognized neighborhood boundaries.