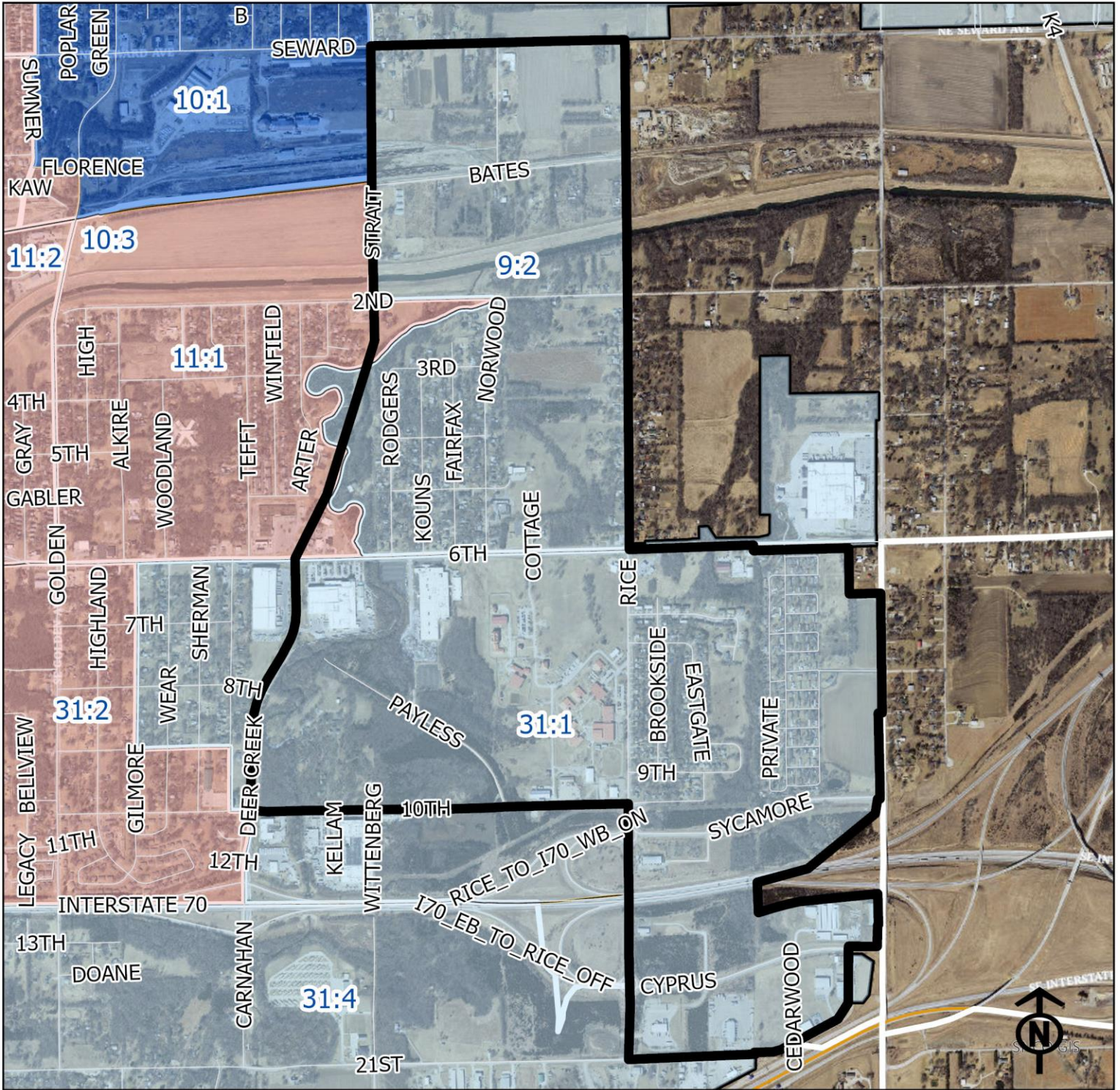


2023 East End Neighborhood Health



Block Groups

Legend

- Healthy
- Out Patient
- At Risk
- Intensive Care

"Vital Signs" Which Determine Neighborhood Health Include:

- 1) % of Persons Below Poverty Level
- 2) Part 1 Crimes Per Capita
- 3) Average Residential Property Values
- 4) % of Owner Occupied Homes
- 5) Number of Boarded Houses

EAST END

Vital Signs	Block Group (Pop. 2022)	2000	2003	2007	2011	2014	2017	2020	2023
1) % Persons Below Poverty	9:2 (625)	7%	12%	12%	31%	42%	48%	24%	5%
Poverty	31:01 (1,325)	11%	15%	15%	13%	16%	20%	13%	8%
2) Public Safety (Part 1)	9:2	(Healthy)	6	4	6	5	4	5	6
Crimes per 100 People	31:01	(Out Patient)	16	17	9	6	7	11	7
3) Average Residential Property Values	9:2	\$40,500	\$56,520	\$39,980	\$44,410	\$45,688	\$44,439	\$45,283	\$60,179
Property Values	31:01	\$28,215	\$37,400	\$34,820	\$43,690	\$42,341	\$36,447	\$46,585	\$60,827
4) Single Family Home Ownership	9:2	49%	66%	54%	62%	60%	58%	54%	57%
Ownership	31:01	48%	63%	41%	64%	47%	62%	64%	64%
5) Boarded Houses/Unsafe Structures	9:2	0	1	0	0	0	0.33	1.29	0.95
Houses/Unsafe Structures	31:01	1	1	1	3	0	0.86	0.64	1.5
6) Neighborhood Health Composite (Rating)	9:2	3.2	3.2	3.0	2.8	2.8	2.6	2.6	3.0
Health Composite (Rating)	31:01	2.4	2.6	2.2	2.8	2.8	2.4	3.0	3.0

- 1) Block Groups identified in Table 1 above represent 2000 & 2010 Census boundaries. Multiple Census Block Group data from the **2000 Neighborhood Health Map** (1990 Block Groups) are averaged in the Table to maintain simplicity. Refer to the Appendix of the Neighborhood Element for a complete breakdown of Block Groups by NIA.
- 2) Vital Signs are recorded by Census Block Group and do not necessarily conform to recognized neighborhood boundaries.
- 3) Block Group 9:2 used to be block group 9:4 prior to 2023 update