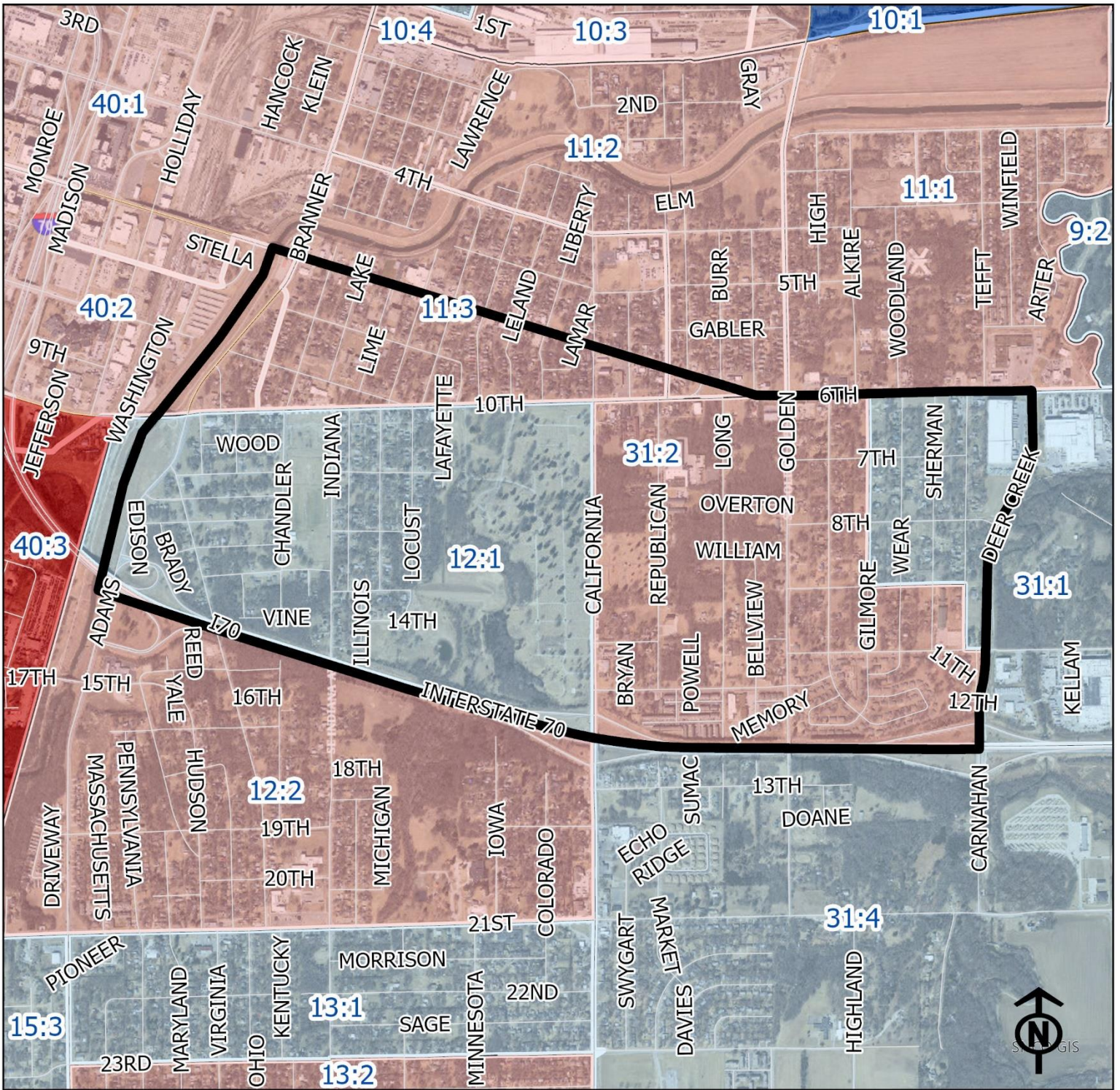


2023 East Topeka South Neighborhood Health



Legend

- Healthy
- Out Patient
- At Risk
- Intensive Care

"Vital Signs" Which Determine Neighborhood Health Include:

- 1) % of Persons Below Poverty Level
- 2) Part 1 Crimes Per Capita
- 3) Average Residential Property Values
- 4) % of Owner Occupied Homes
- 5) Number of Boarded Houses

Block Groups



EAST TOPEKA SOUTH

Vital Signs	Block Group (Pop. 2022)	2000	2003	2007	2011	2014	2017	2020	2023
1) % Persons Below Poverty	11:3 (828)	29%	27%	27%	60%	40%	23%	11%	72%
	12:1 (592)	26%	18%	18%	23%	32%	25%	12%	4%
	31:2 (1,202)	54%	32%	32%	55%	40%	36%	20%	59%
2) Public Safety (Part 1 Crimes per 100 People)	11:3 (Intensive Care)		26	22	15	11	9	22	13
	12:1 (Out Patient)		18	14	14	14	9	17	9
	31:2 (Out Patient)		20	16	17	18	17	13	18
3) Average Residential Property Values	11:3	\$11,950	\$15,250	\$14,030	\$19,175	\$20,216	\$19,498	\$21,383	\$33,091
	12:1	\$16,970	\$21,030	\$17,050	\$31,970	\$33,219	\$33,725	\$36,222	\$51,272
	31:2	\$28,970	\$24,110	\$27,920	\$66,030	\$60,862	\$56,196	\$64,137	\$88,101
4) Single Family Home Ownership	11:3	32%	40%	36%	48%	51%	52%	53%	53%
	12:1	33%	41%	28%	44%	41%	48%	50%	52%
	31:2	44%	55%	29%	49%	51%	51%	50%	51%
5) Boarded Houses/Unsafe Structures	11:3	6	11	6	4	4	1.82	0.99	0.92
	12:1	14	1	1	4	3	0	0.64	0.63
	31:2	4	0	1	3	6	1.21	0.61	1.22
6) Neighborhood Health Composite (Rating)	11:3	1.0	1.4	1.4	1.8	2.2	2.2	2.2	2.0
	12:1	1.4	2.2	2.0	2.0	2.0	2.4	2.6	3.0
	31:2	2.0	2.2	1.8	2.0	2.0	2.2	2.6	2.4

1) Block Groups identified in Table 1 above represent 2000 & 2010 Census boundaries. Multiple Census Block Group data from the **2000 Neighborhood Health Map** (1990 Block Groups) are averaged in the Table to maintain simplicity. Refer to the Appendix of the Neighborhood Element for a complete breakdown of Block Groups by NIA.

2) Vital Signs are recorded by Census Block Group and do not necessarily conform to recognized neighborhood boundaries.