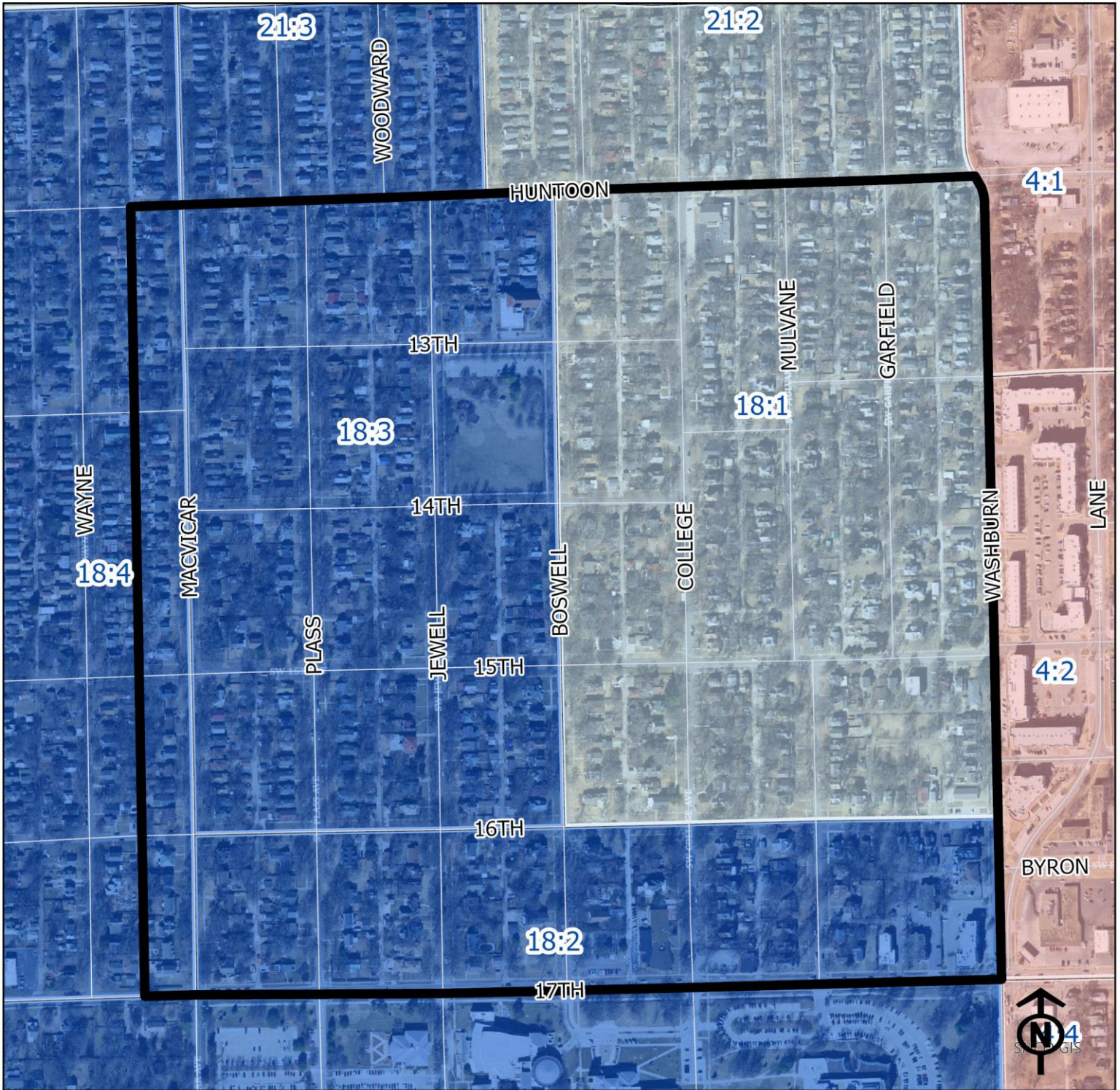


# 2023 College Hill Neighborhood Health



Block Groups

## Legend

- Healthy
- Out Patient
- At Risk
- Intensive Care

"Vital Signs" Which Determine Neighborhood Health Include:

- 1) % of Persons Below Poverty Level
- 2) Part 1 Crimes Per Capita
- 3) Average Residential Property Values
- 4) % of Owner Occupied Homes
- 5) Number of Boarded Houses

**College Hill**

Vital Signs	Block Group (Pop. 2022)	2000	2003	2007	2011	2014	2017	2020	2023
1) % Persons Below Poverty	18:1 (1,022)	Out Patient	14%	Out Patient	25%	20%	38%	12%	12%
	18:3 (900)	Healthy	2%	Healthy	9%	2%	4%	9%	9%
	18:4 (774)	7%	5%	Healthy	16%	3%	4%	9%	0%
2) Public Safety (Part 1 Crimes per 100 People)	18:1	At Risk	21	11	14	12	17	15	7
	18:3	At Risk	13	11	7	7	8	6	4
	18:4	At Risk	11	9	10	7	8	7	5
3) Average Residential Property Values	18:1	At Risk	\$61,828	\$68,299	\$70,728	\$67,267	\$65,351	\$71,810	\$104,053
	18:3	Out Patient	\$80,051	\$93,533	\$94,316	\$90,696	\$87,012	\$93,416	\$133,439
	18:4	Out Patient	\$76,404	\$89,809	\$90,341	\$86,756	\$84,199	\$89,605	\$128,598
4) Single Family Home Ownership	18:1	Healthy	80%	73%	70%	59%	61%	59%	61%
	18:3	Healthy	86%	84%	81%	79%	75%	73%	73%
	18:4	Healthy	84%	80%	78%	73%	71%	69%	69%
5) Boarded Houses/Unsafe Structures	18:1	Out Patient	2	0	0	3	0.239	0.73	0.48
	18:3	Healthy	0	0	1	1	0.365	0.364	0.37
	18:4	0	1	0	1	0	0.487	0.000	0.25
6) Neighborhood Health Composite (Rating)	18:1	Out Patient	3.2	3.6	3.2	2.8	2.4	2.8	3.2
	18:3	Healthy	3.8	4.0	3.6	3.6	3.5	3.4	3.6
	18:4	Healthy	3.6	3.8	3.4	3.8	3.6	3.6	3.4

1) Block Groups identified in Table 1 above represent 2000 & 2010 Census boundaries. Multiple Census Block Group data from the **2000 Neighborhood Health Map** (1990 Block Groups) are averaged in the Table to maintain simplicity. Refer to the Appendix of the Neighborhood Element for a complete breakdown of Block Groups by NIA.

2) Vital Signs are recorded by Census Block Group and do not necessarily conform to recognized neighborhood boundaries.