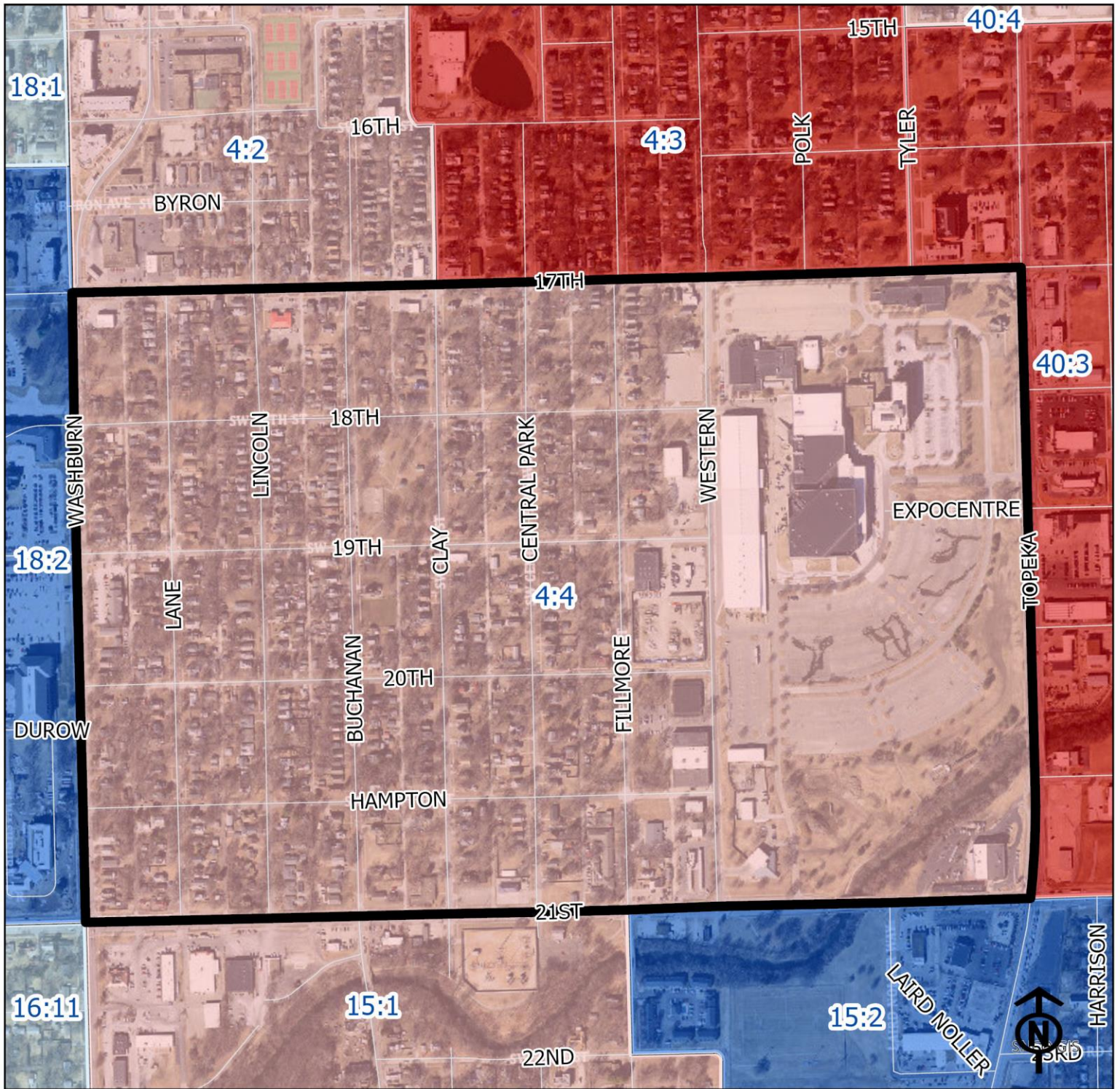


# 2023 Chesney Park Neighborhood Health



Block Groups

## Legend

- Healthy
- Out Patient
- At Risk
- Intensive Care

"Vital Signs" Which Determine Neighborhood Health Include:

- 1) % of Persons Below Poverty Level
- 2) Part 1 Crimes Per Capita
- 3) Average Residential Property Values
- 4) % of Owner Occupied Homes
- 5) Number of Boarded Houses

**CHESNEY PARK**

Vital Signs	Block Group (Pop. 2022)	2000	2003	2007	2011	2014	2017	2020	2023
1) % Persons Below Poverty	4:4 (1,501)	18%	31%	31%	45%	60%	41%	18%	17%
2) Public Safety (Part 1 Crimes per 100 People)	4:4	(Intensive Care)	38	25	10	16	15	17	13
3) Average Residential Property Values	4:4	\$23,340	\$30,770	\$39,790	\$48,650	\$44,775	\$42,652	\$46,269	\$66,516
4) Single Family Home Ownership	4:4	35%	58%	43%	47%	42%	42%	41%	46%
5) Boarded Houses/Unsafe Structures	4:4	5	4	2	1	0	1.08	1.44	1.45
6) Neighborhood Health Composite (Rating)	4:4	1.6	1.6	1.8	2.4	2.4	2.0	2.4	2.4

1) Block Groups identified in Table 1 above represent 2000 & 2010 Census boundaries. Multiple Census Block Group data from the **2000 Neighborhood Health Map** (1990 Block Groups) are averaged in the Table to maintain simplicity. Refer to the Appendix of the Neighborhood Element for a complete breakdown of Block Groups by NIA.

2) Vital Signs are recorded by Census Block Group and do not necessarily conform to recognized neighborhood boundaries.