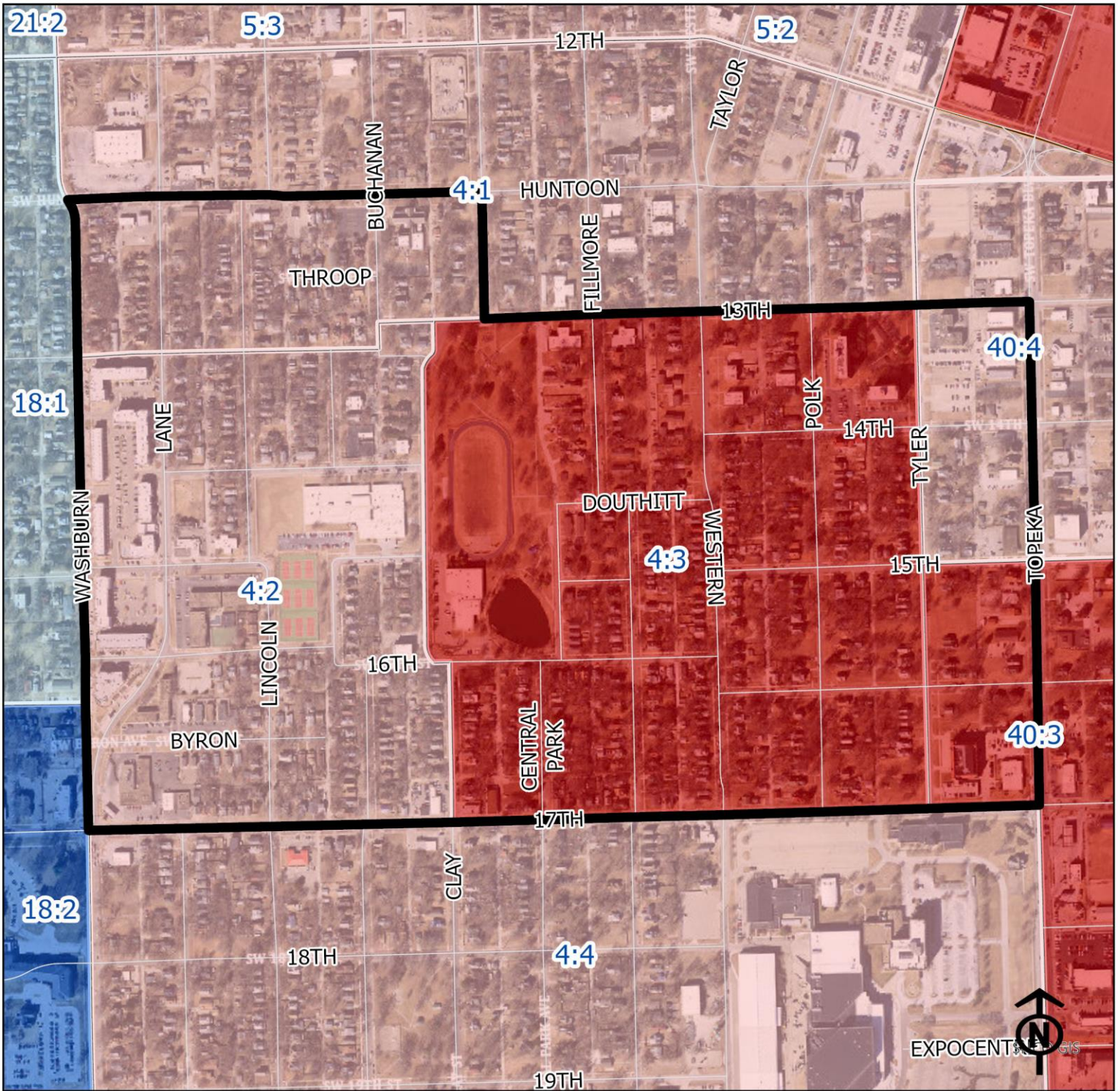


# 2023 Central Park Neighborhood Health



## Legend

- Healthy
- Out Patient
- At Risk
- Intensive Care

"Vital Signs" Which Determine Neighborhood Health Include:

- 1) % of Persons Below Poverty Level
- 2) Part 1 Crimes Per Capita
- 3) Average Residential Property Values
- 4) % of Owner Occupied Homes
- 5) Number of Boarded Houses

Block Groups



**CENTRAL PARK**

Vital Signs	Block Group (Pop. 2022)	2000	2003	2007	2011	2014	2017	2020	2023
1) % Persons Below Poverty	4:2 (1,134)	18%	21%	21%	51%	53%	40%	45%	19%
Poverty	4:3 (836)	24%	29%	29%	51%	33%	55%	38%	45%
2) Public Safety (Part 1)	4:2	(Intensive Care)	29	23	24	16	20	16	13
Crimes per 100 People	4:3	(At Risk)	26	21	20	15	22	23	21
3) Average Residential Property Values	4:2	\$42,410	\$33,710	\$55,100	\$133,600	\$133,598	\$149,194	\$166,359	\$205,133
4) Single Family Home Ownership	4:3	\$33,830	\$24,050	\$50,710	\$56,190	\$58,861	\$55,595	\$64,530	\$90,355
5) Boarded Houses/Unsafe Structures	4:2	40%	44%	36%	43%	33%	34%	35%	32%
6) Neighborhood Health Composite (Rating)	4:3	41%	45%	30%	34%	33%	33%	31%	27%
	4:2	1	0	1	1	0	0.53	1.06	2.11
	4:3	1	4	4	0	4	2.38	2.08	3.59
	4:2	2.0	2.4	2.2	2.4	2.6	2.4	2.4	2.2
	4:3	2.2	1.6	1.6	2.2	1.8	1.6	1.4	1.6

1) Block Groups identified in Table 1 above represent 2000 & 2010 Census boundaries. Multiple Census Block Group data from the **2000 Neighborhood Health Map** (1990 Block Groups) are averaged in the Table to maintain simplicity. Refer to the Appendix of the Neighborhood Element for a complete breakdown of Block Groups by NIA.

2) Vital Signs are recorded by Census Block Group and do not necessarily conform to recognized neighborhood boundaries.