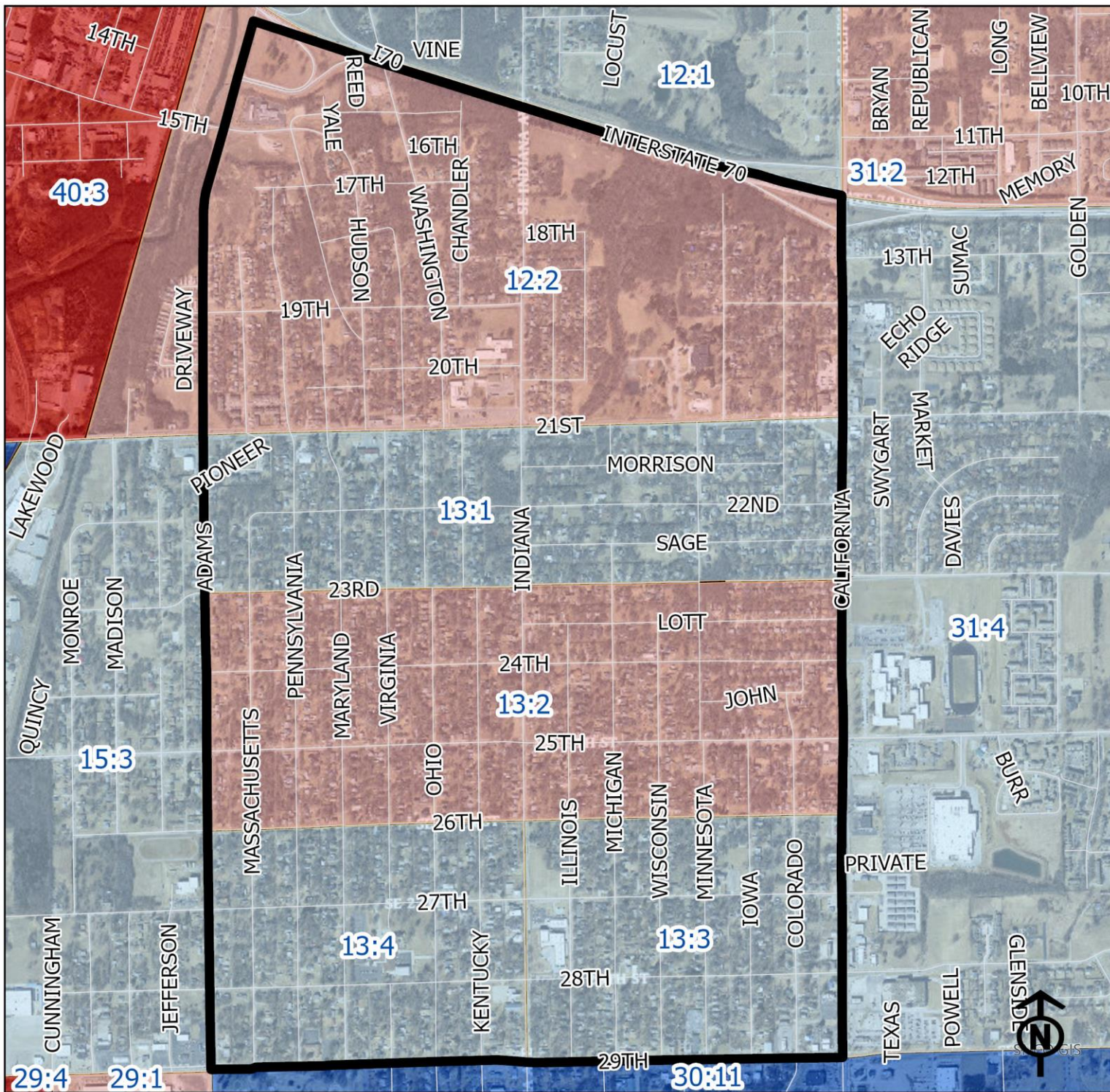


# 2023 Central Highland Park Neighborhood Health



Block Groups

## Legend

- Healthy
- Out Patient
- At Risk
- Intensive Care

"Vital Signs" Which Determine Neighborhood Health Include:

- 1) % of Persons Below Poverty Level
- 2) Part 1 Crimes Per Capita
- 3) Average Residential Property Values
- 4) % of Owner Occupied Homes
- 5) Number of Boarded Houses

CENTRAL HIGHLAND PARK

Vital Signs	Block Group (Pop. 2022)	2000	2003	2007	2011	2014	2017	2020	2023
1) % Persons Below Poverty	12:2 (1,472)	14%	20%	20%	38%	42%	17%	16%	33%
	13:1 (1,049)	16%	7%	7%	8%	23%	29%	14%	5%
	13:2 (1,912)	18%	16%	16%	22%	22%	33%	26%	28%
	13:3 (798)	18%	38%	38%	10%	21%	23%	10%	13%
	13:4 (480)	5%	8%	8%	13%	14%	6%	10%	23%
2) Public Safety (Part 1 Crimes per 100 People)	12:2	(Out Patient)	19	13	13	11	10	11	9
	13:1	(Out Patient)	12	12	13	9	11	10	7
	13:2	(Out Patient)	15	12	13	10	9	11	7
	13:3	(At Risk)	16	14	14	10	10	11	8
	13:4	(At Risk)	14	14	13	14	11	8	12
3) Average Residential Property Values	12:2	\$27,900	\$31,060	\$35,060	\$45,555	\$43,719	\$42,338	\$47,648	\$63,298
	13:1	\$32,665	\$39,960	\$44,210	\$55,180	\$51,576	\$51,921	\$56,193	\$76,379
	13:2	\$33,120	\$40,970	\$47,760	\$49,570	\$47,396	\$47,247	\$50,248	\$69,828
	13:3	\$36,670	\$45,030	\$52,580	\$54,095	\$52,153	\$51,658	\$55,409	\$76,430
	13:4	\$37,490	\$45,500	\$51,760	\$53,590	\$50,929	\$50,494	\$54,484	\$76,426



4) Single Family Home Ownership	12:2	52%	58%	45%	54%	49%	47%	46%	48%
	13:1	56%	63%	54%	59%	58%	55%	54%	56%
	13:2	62%	66%	61%	57%	51%	50%	48%	49%
	13:3	67%	71%	59%	61%	54%	53%	51%	54%
	13:4	61%	68%	57%	57%	49%	53%	53%	53%
5) Boarded Houses/Unsafe Structures	12:2	3	4	3	4	5	0.46	0.92	0.62
	13:1	1	3	0	0	1	0	0.46	1.37
	13:2	4	5	1	2	4	0.68	1.64	0.41
	13:3	3	2	1	1	3	0.91	0.61	1.22
	13:4	3	0	1	2	2	0.32	0.97	0.64
6) Neighborhood Health Composite (Rating)	12:2	2.4	2.0	2.0	2.2	2.2	2.8	2.6	2.4
	13:1	2.5	3.0	3.4	3.2	2.8	3.0	3.0	3.0
	13:2	2.4	2.4	2.8	2.6	2.6	2.6	2.4	2.6
	13:3	2.2	2.6	2.4	2.8	2.6	2.6	3.0	2.8
	13:4	2.6	3.0	2.8	2.8	2.8	3.2	2.6	2.8

1) Block Groups identified in Table 1 above represent 2000 & 2010 Census boundaries. Multiple Census Block Group data from the **2000 Neighborhood Health Map** (1990 Block Groups) are averaged in the Table to maintain simplicity. Refer to the Appendix of the Neighborhood Element for a complete breakdown of Block Groups by NIA.

2) Vital Signs are recorded by Census Block Group and do not necessarily conform to recognized neighborhood boundaries.