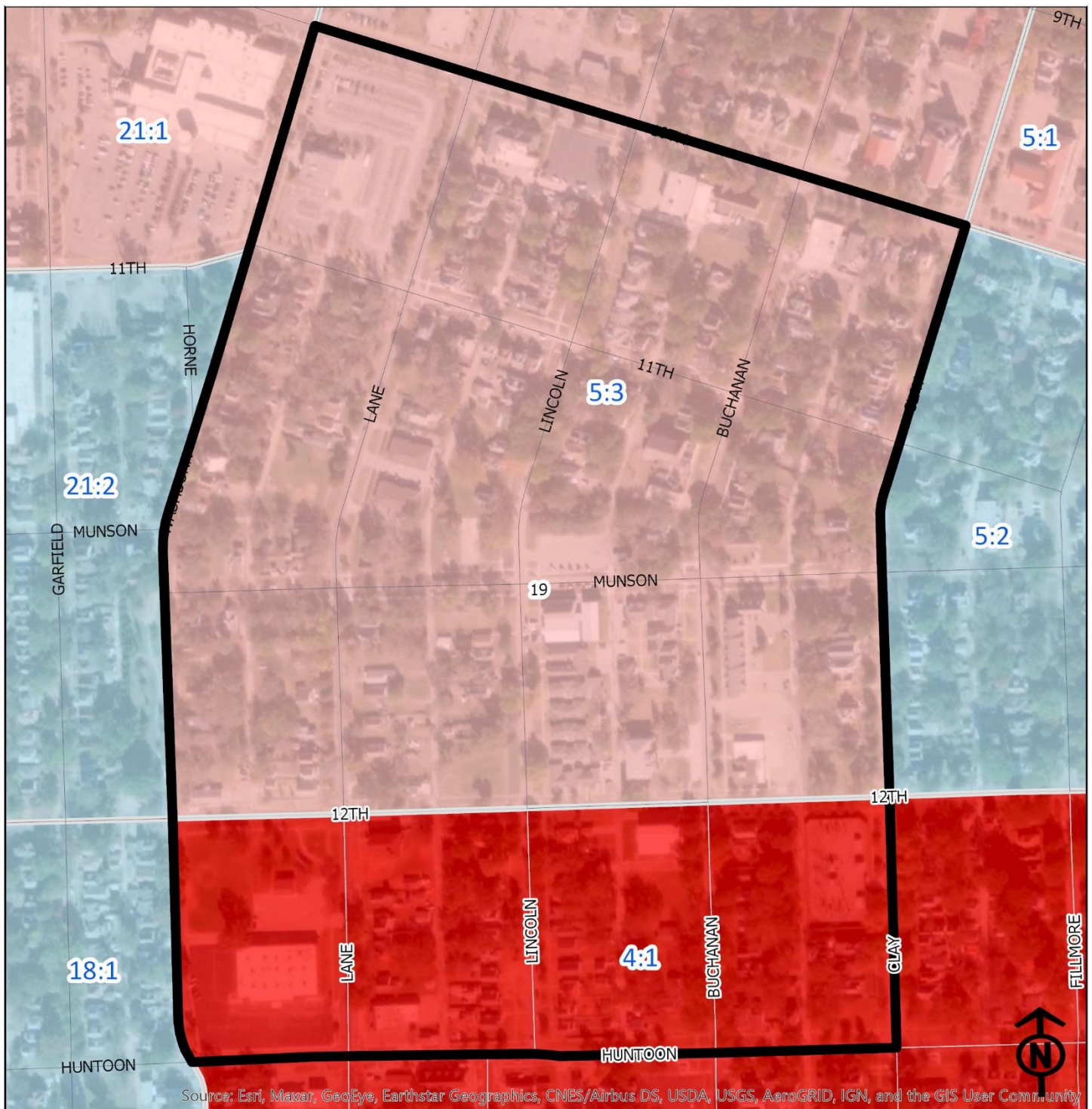


# 2020 Tennessee Town Neighborhood Health



## Block Groups

### Legend

- Healthy
- Out Patient
- At Risk
- Intensive Care

"Vital Signs" Which Determine Neighborhood Health Include:

- 1) % of Persons Below Poverty Level
- 2) Part 1 Crimes Per Capita
- 3) Average Residential Property Values
- 4) % of Owner Occupied Homes
- 5) Number of Boarded Houses

**TENNESSEE TOWN**

| Vital Signs                               | Block Group (Pop. 2019) | 2000             | 2003     | 2007     | 2011     | 2014     | 2017     | 2020     |
|---|-------------------------|------------------|----------|----------|----------|----------|----------|----------|
| 1) % Persons Below Poverty                | 4:1 (603)               | 21%              | 33%      | 33%      | 22%      | 18%      | 17%      | 48%      |
|   | 5:3 (703)               | 37%              | 28%      | 28%      | 23%      | 20%      | 39%      | 23%      |
| 2) Public Safety (Part 1)                 | 4:1                     | (Intensive Care) | 46       | 42       | 47       | 28       | 20       | 29       |
| Crimes per 100 People)                    | 5:3                     | (Intensive Care) | 21       | 26       | 18       | 15       | 15       | 15       |
| 3) Average Residential Property Values    | 4:1                     | \$30,730         | \$29,160 | \$44,070 | \$54,590 | \$50,688 | \$48,209 | \$54,233 |
|   | 5:3                     | \$20,540         | \$37,065 | \$52,010 | \$65,780 | \$59,121 | \$55,984 | \$57,742 |
| 4) Single Family Home Ownership           | 4:1                     | 39%              | 43%      | 36%      | 47%      | 34%      | 42%      | 45%      |
|   | 5:3                     | 39%              | 43%      | 39%      | 52%      | 43%      | 52%      | 50%      |
| 5) Boarded Houses/Unsafe Structures       | 4:1                     | 4                | 3        | 1        | 1        | 1        | 1.00     | 2.00     |
|   | 5:3                     | 3                | 4        | 2        | 0        | 1        | 0.82     | 1.66     |
| 6) Neighborhood Health Composite (Rating) | 4:1                     | 1.8              | 1.4      | 1.8      | 2.0      | 2.4      | 2.2      | 1.4      |
|   | 5:3                     | 1.4              | 1.8      | 2.0      | 2.8      | 2.6      | 2.2      | 2.4      |

1) Block Groups identified in Table 1 above represent 2000 & 2010 Census boundaries. Multiple Census Block Group data from the **2000 Neighborhood Health Map** (1990 Block Groups) are averaged in the Table to maintain simplicity. Refer to the Appendix of the Neighborhood Element for a complete breakdown of Block Groups by NIA.

2) Vital Signs are recorded by Census Block Group and do not necessarily conform to recognized neighborhood boundaries.