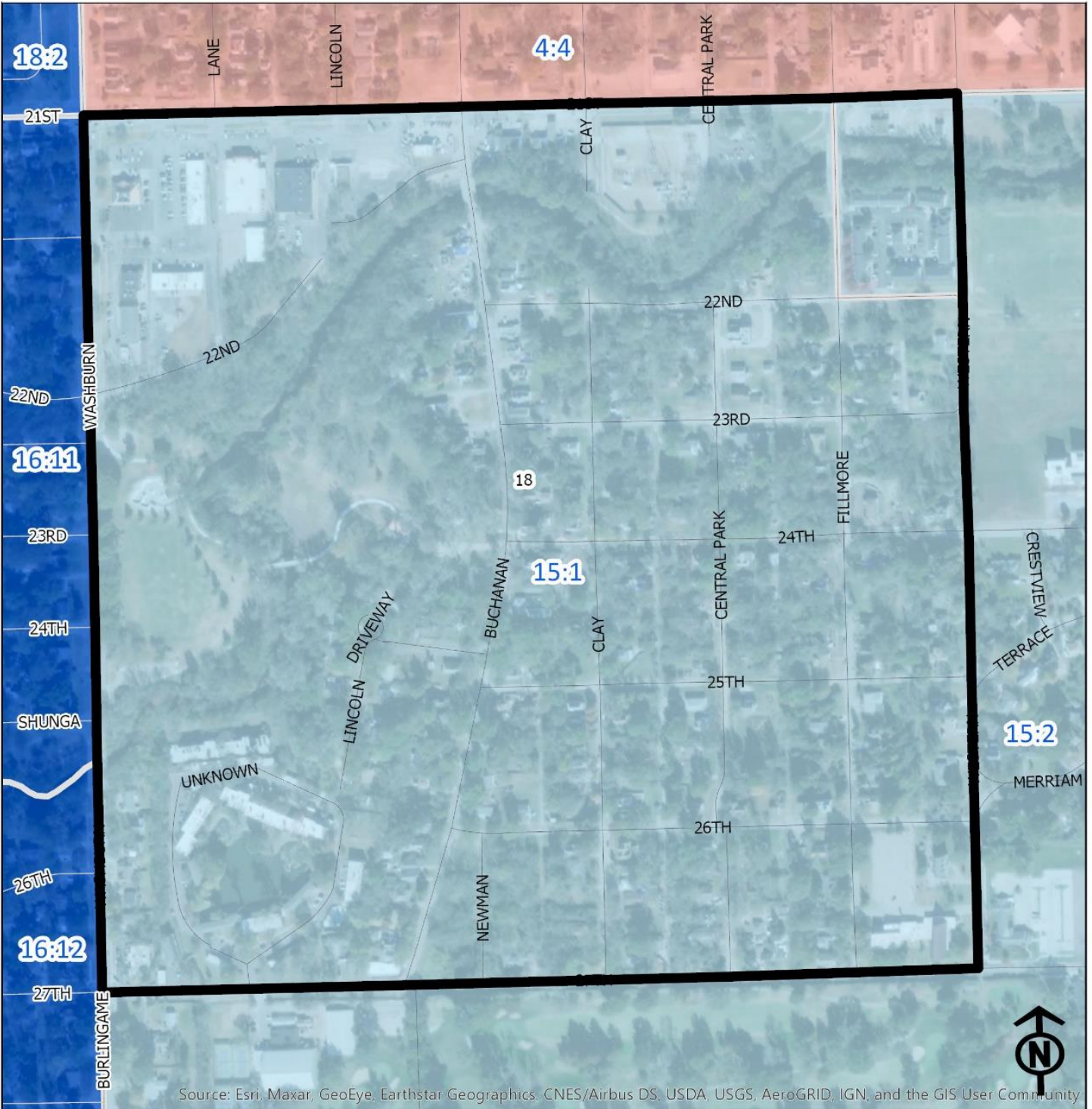


2020 Quinton Heights-Steele Neighborhood Health



Source: Esri, Maxar, GeoEye, Earthstar Geographics, CNES/Airbus DS, USDA, USGS, AeroGRID, IGN, and the GIS User Community

Block Groups

Legend

- Healthy
- Out Patient
- At Risk
- Intensive Care

"Vital Signs" Which Determine Neighborhood Health Include:

- 1) % of Persons Below Poverty Level
- 2) Part 1 Crimes Per Capita
- 3) Average Residential Property Values
- 4) % of Owner Occupied Homes
- 5) Number of Boarded Houses

QUINTON HEIGHTS STEELE

Vital Signs	Block Group (Pop. 2019)	2000	2003	2007	2011	2014	2017	2020
1) % Persons Below Poverty	15:1 (582)	18%	12%	12%	19%	34%	10%	7%
2) Public Safety (Part 1 Crimes per 100 People)	15:1	(At Risk)	23	18	23	30	19	27
3) Average Residential Property Values	15:1	\$55,810	\$36,940	\$59,910	\$62,625	\$68,708	\$70,103	\$73,896
4) Single Family Home Ownership	15:1	59%	65%	54%	58%	52%	50%	50%
5) Boarded Houses/Unsafe Structures	15:1	0	2	0	1	1	0	1.46
6) Neighborhood Health Composite (Rating)	15:1	2.8	2.6	3	2.4	2.0	3.0	2.8

- 1) Block Groups identified in Table 1 above represent 2000 & 2010 Census boundaries. Multiple Census Block Group data from the **2000 Neighborhood Health Map** (1990 Block Groups) are averaged in the Table to maintain simplicity. Refer to the Appendix of the Neighborhood Element for a complete breakdown of Block Groups by NIA.
- 2) Vital Signs are recorded by Census Block Group and do not necessarily conform to recognized neighborhood boundaries.