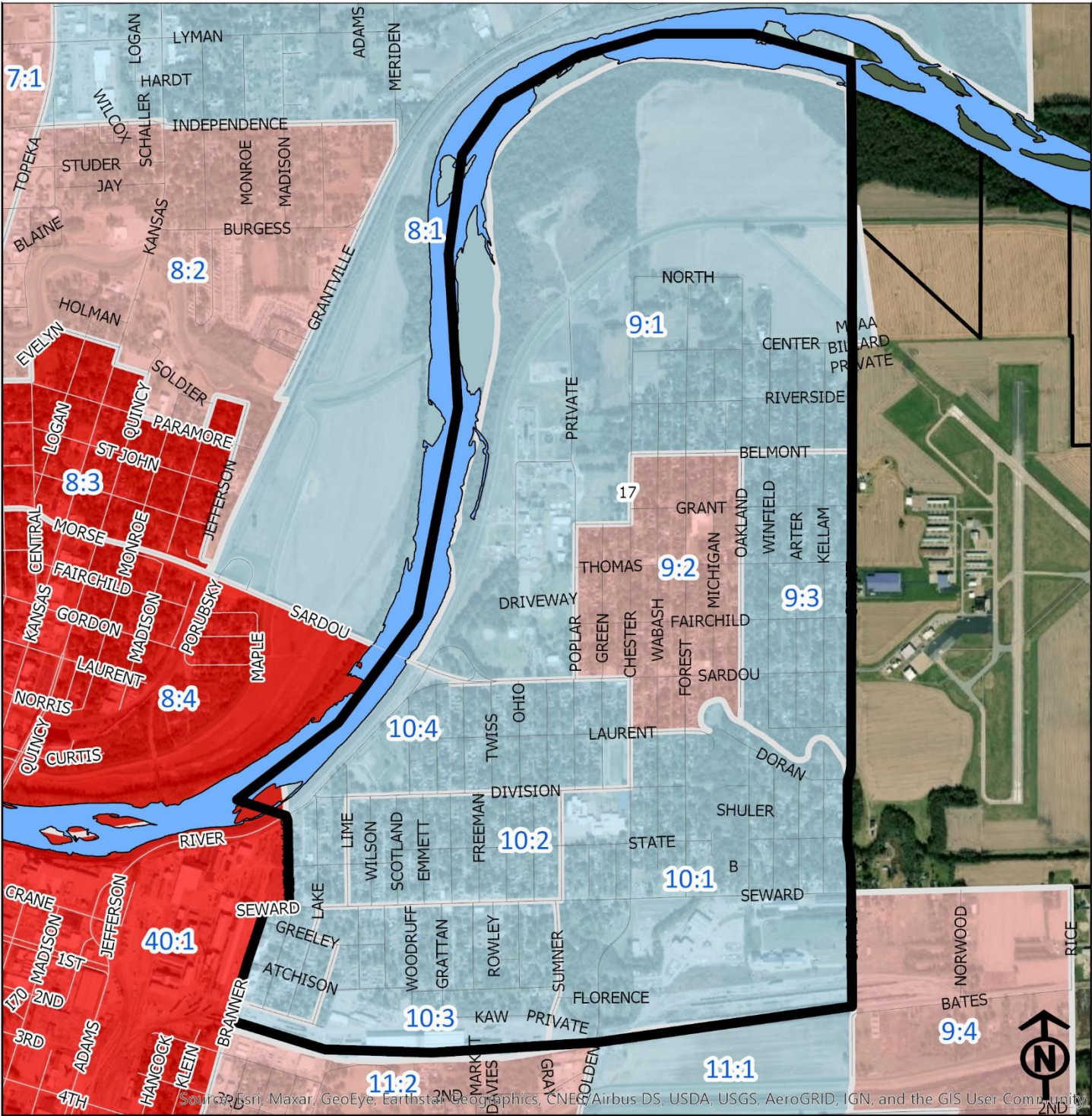


2020 Oakland Neighborhood Health



Source: Esri, Maxar, GeoEye, Earthstar Geographics, CNES/Airbus DS, USDA, USGS, AeroGRID, IGN, and the GIS User Community

Block Groups

Legend

- Healthy
- Out Patient
- At Risk
- Intensive Care

"Vital Signs" Which Determine Neighborhood Health Include:

- 1) % of Persons Below Poverty Level
- 2) Part 1 Crimes Per Capita
- 3) Average Residential Property Values
- 4) % of Owner Occupied Homes
- 5) Number of Boarded Houses

OAKLAND

Vital Signs	Block Group (Pop. 2019)	2000	2003	2007	2011	2014	2017	2020
1) % Persons Below Poverty	9:1 (433)	5%	1%	1%	39%	43%	12%	5%
	9:2 (792)	8%	7%	7%	28%	17%	21%	27%
	9:3 (675)	4%	13%	13%	37%	10%	12%	11%
	10:1 (863)	4%	8%	8%	18%	3%	12%	16%
	10:2 (621)	6%	10%	10%	21%	36%	16%	9%
	10:3 (595)	11%	12%	12%	36%	38%	7%	13%
	10:4 (1,077)	6%	16%	16%	25%	25%	22%	13%
	9:1	(Healthy)	7	9	11	9	7	9
	9:2	(At Risk)	16	20	11	8	14	12
	9:3	(At Risk)	8	8	7	5	5	7
2) Public Safety (Part 1 Crimes per 100 People)	10:1	(Out Patient)	11	13	10	10	8	9
	10:2	(Out Patient)	10	11	11	7	8	11
	10:3	(Healthy)	12	9	11	7	5	6
	10:4	(Out Patient)	9	9	8	7	8	8
	9:1	\$46,200	\$55,540	\$63,240	\$65,900	\$63,277	\$62,826	\$66,318
	9:2	\$41,270	\$48,940	\$56,820	\$58,960	\$56,723	\$56,200	\$57,017
3) Average Residential Property Values	9:3	\$41,140	\$48,890	\$56,890	\$58,680	\$56,407	\$55,826	\$57,389
	10:1	\$41,050	\$48,560	\$60,170	\$63,910	\$63,643	\$63,467	\$68,848
	10:2	\$38,140	\$46,000	\$53,680	\$53,890	\$52,743	\$51,838	\$52,517
	10:3	\$36,240	\$43,400	\$47,350	\$54,100	\$63,125	\$61,463	\$56,462
	10:4	\$36,970	\$44,350	\$50,820	\$53,370	\$57,200	\$55,736	\$52,524

4) Single Family Home Ownership	9:1	77%	79%	70%	75%	66%	65%	63%
	9:2	56%	65%	70%	70%	60%	58%	61%
	9:3	64%	72%	73%	70%	62%	61%	59%
	10:1	54%	63%	68%	66%	61%	60%	60%
	10:2	52%	64%	72%	63%	57%	53%	51%
	10:3	47%	61%	65%	59%	58%	62%	61%
	10:4	48%	62%	69%	68%	64%	64%	64%
	9:1	0	0	0	0	1	0.39	0.40
	9:2	5	2	5	0	0	0.67	0.90
	9:3	0	0	0	1	0	0.52	0.54
5) Boarded Houses/Unsafe Structures	10:1	1	0	2	0	0	0	0.49
	10:2	2	1	2	0	0	0.26	1.28
	10:3	1	2	0	0	0	0	0.33
	10:4	0	1	1	0	0	0.20	0.60
	9:1	3.6	3.8	3.8	3.0	2.6	3.0	3.2
	9:2	2.4	3.0	2.8	3.2	3.2	2.6	2.6
	9:3	3.0	3.4	3.4	2.8	3.4	3.0	3.0
	10:1	3.0	3.2	2.8	3.2	3.4	3.2	3.0
6) Neighborhood Health Composite (Rating)	10:2	3.0	3.0	3.2	3.0	2.8	3.0	2.8
	10:3	2.8	3.0	3.2	2.8	2.8	3.4	3.0
	10:4	3.0	2.8	3.0	3.0	3.0	2.8	3.0

- 1) Block Groups identified in Table 1 above represent 2000 & 2010 Census boundaries. Multiple Census Block Group data from the **2000 Neighborhood Health Map** (1990 Block Groups) are averaged in the Table to maintain simplicity. Refer to the Appendix of the Neighborhood Element for a complete breakdown of Block Groups by NIA.
- 2) Vital Signs are recorded by Census Block Group and do not necessarily conform to recognized neighborhood boundaries.