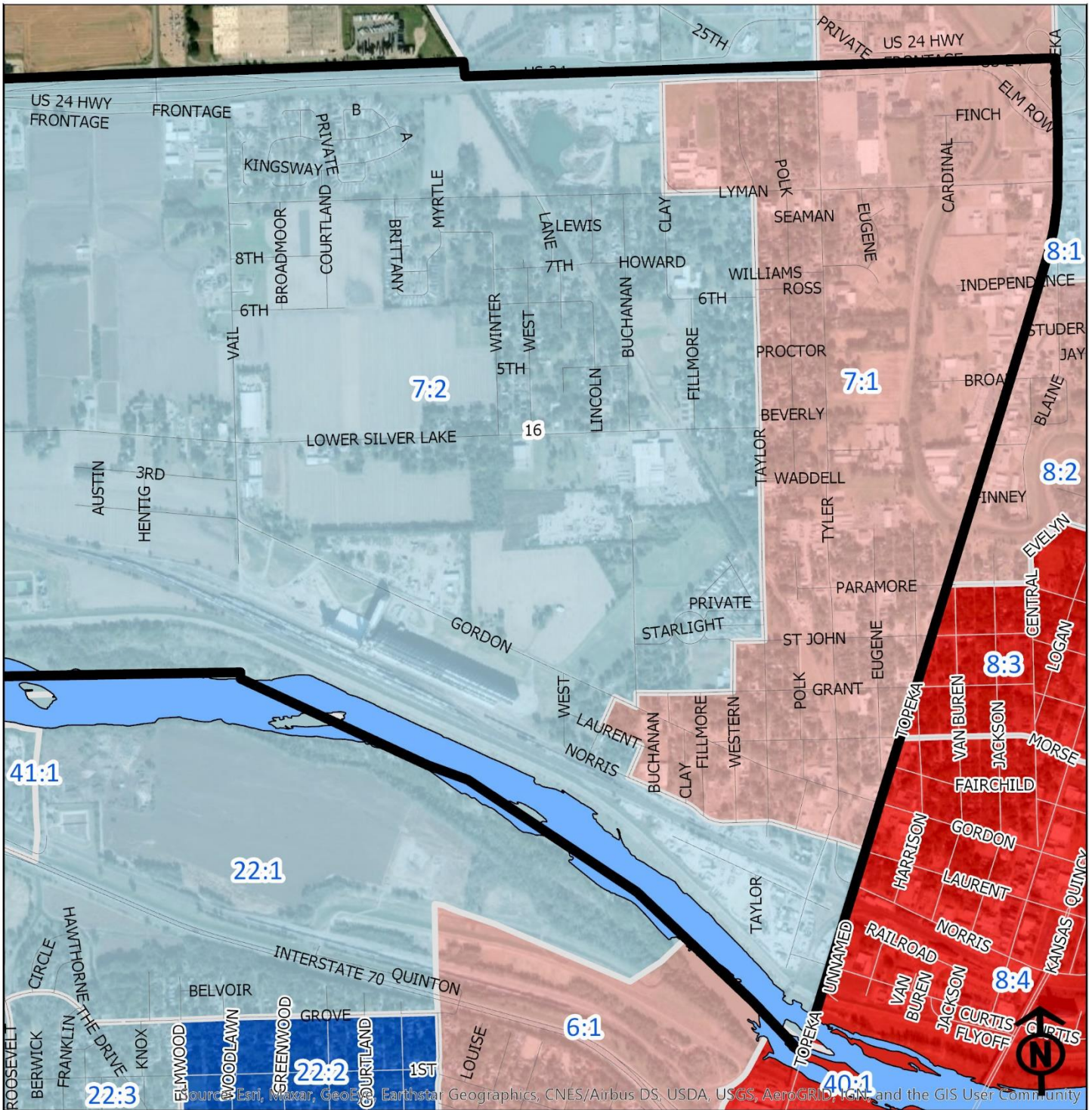


2020 North Topeka West Neighborhood Health



Block Groups

Legend

- Healthy
- Out Patient
- At Risk
- Intensive Care

"Vital Signs" Which Determine Neighborhood Health Include:

- 1) % of Persons Below Poverty Level
- 2) Part 1 Crimes Per Capita
- 3) Average Residential Property Values
- 4) % of Owner Occupied Homes
- 5) Number of Boarded Houses

NORTH TOPEKA WEST

Vital Signs	Block Group (Pop. 2019)	2000	2003	2007	2011	2014	2017	2020
1) % Persons Below Poverty	7:1 (1,253) 7:2 (1,758)	24% Healthy	13% (Out Patient)	13% 13%	22% 17%	40% 15%	27% 17%	5% 5%
2) Public Safety (Part 1)	7:1 7:2	(Out Patient) (Out Patient)	33 (Healthy)	36 (Healthy)	44 15	40 12	40 13	41 15
3) Average Residential Property Values	7:1 7:2	\$38,680 (Out Patient)	\$44,250 \$66,172	\$49,760 \$66,172	\$61,300 \$88,448	\$61,258 \$90,975	\$64,256 \$77,852	\$75,401 \$106,332
4) Single Family Home Ownership	7:1 7:2	61% (Healthy)	63% 84%	52% 84%	65% 77%	60% 68%	64% 72%	63% 72%
5) Boarded Houses/Unsafe	7:1 7:2	1 0	5 1	3 1	3 0	1 0	0.58 1.58	0.88 0.77
6) Neighborhood Health Composite	7:1 7:2	2.6 3.6	2.2 3.4	2.2 3.4	2.0 3.4	2.0 3.4	2.2 3.0	2.6 3.2

- 1) Block Groups identified in Table 1 above represent 2000 & 2010 Census boundaries. Multiple Census Block Group data from the **2000 Neighborhood Health Map** (1990 Block Groups) are averaged in the Table to maintain simplicity. Refer to the Appendix of the Neighborhood Element for a complete breakdown of Block Groups by NIA.
- 2) Vital Signs are recorded by Census Block Group and do not necessarily conform to recognized neighborhood boundaries.