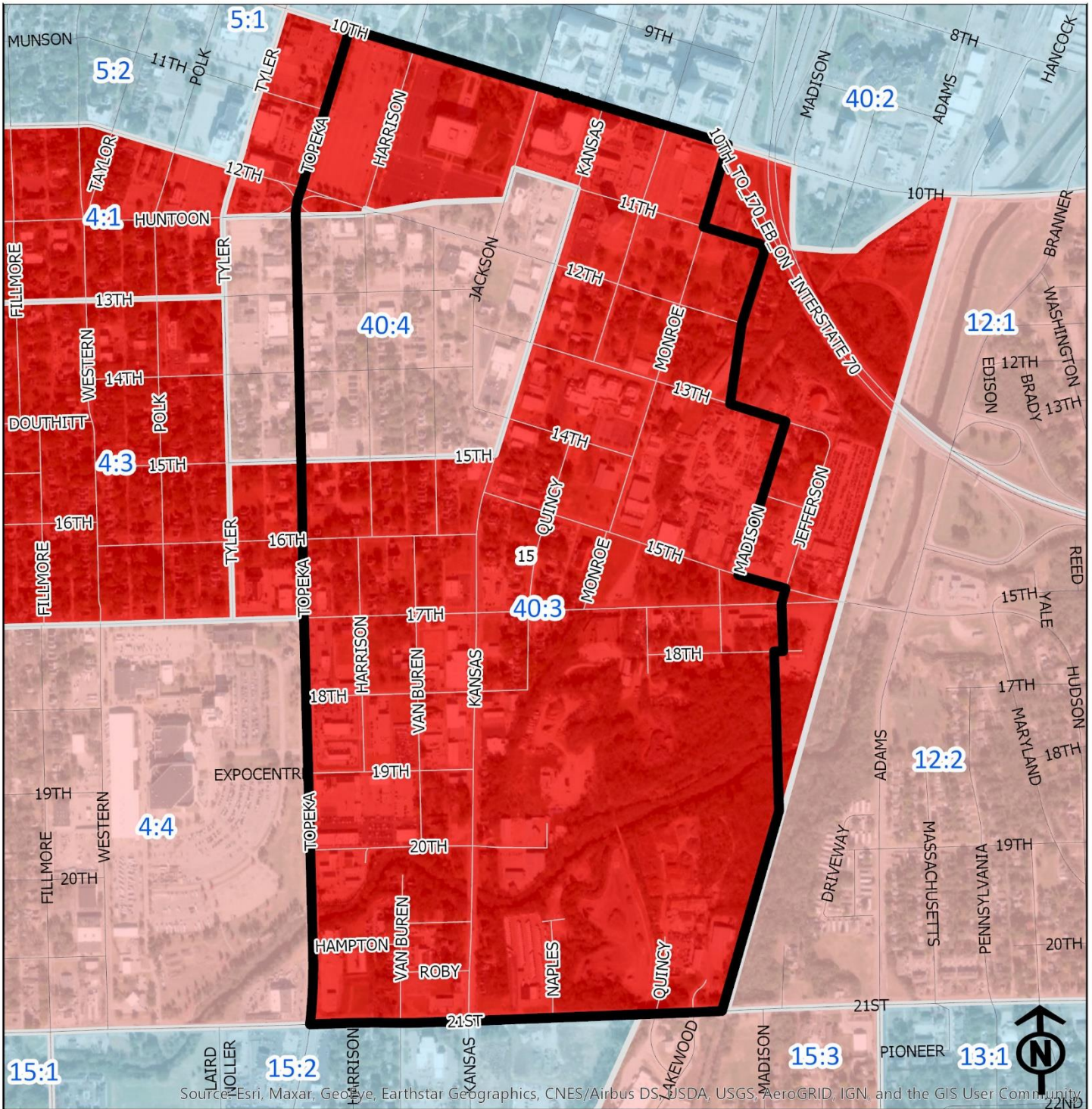


2020 Monroe Neighborhood Health



Legend

- Healthy
- Out Patient
- At Risk
- Intensive Care

"Vital Signs" Which Determine Neighborhood Health Include:

- 1) % of Persons Below Poverty Level
- 2) Part 1 Crimes Per Capita
- 3) Average Residential Property Values
- 4) % of Owner Occupied Homes
- 5) Number of Boarded Houses

Block Groups

MONROE

| Vital Signs | Block Group (Pop. 2019) | 2000 | 2003 | 2007 | 2011 | 2014 | 2017 | 2020 |
|---|-------------------------|---------------|----------|----------|----------|-----------|-----------|-----------|
| 1) % Persons Below Poverty | 40:3 (532) | 36% | 42% | 42% | 54% | 58% | 45% | 23% |
| 2) Public Safety (Part 1) | 40:4 (728) | 40% | 38% | 38% | 21% | 81% | 82% | 49% |
| Crimes per 100 People | 40:3 | (Out Patient) | 39 | 49 | 41 | 37 | 41 | 70 |
| 3) Average Residential Property Values | 40:4 | (At Risk) | 30 | 26 | 24 | 17 | 17 | 17 |
| 4) Single Family Home Ownership | 40:3 | \$14,340 | \$18,010 | \$23,445 | \$35,460 | \$36,848 | \$36,436 | \$37,764 |
| 5) Boarded Houses/Unsafe Structures | 40:4 | \$74,040 | \$61,030 | \$66,270 | \$97,440 | \$103,924 | \$107,551 | \$122,006 |
| 6) Neighborhood Health Composite (Rating) | 40:3 | 27% | 33% | 27% | 44% | 39% | 39% | 42% |
| | 40:4 | 40% | 53% | 22% | 55% | 34% | 52% | 47% |
| | 40:3 | 8 | 2 | 2 | 0 | 3 | 1.13 | 0.65 |
| | 40:4 | 2 | 1 | 0 | 0 | 7 | 0.99 | 2.02 |
| | 40:3 | 1.6 | 1.4 | 1.4 | 1.8 | 1.4 | 1.4 | 1.8 |
| | 40:4 | 2.4 | 2.2 | 2.2 | 2.8 | 2.0 | 2.6 | 2.2 |

- 1) Block Groups identified in Table 1 above represent 2000 & 2010 Census boundaries. Multiple Census Block Group data from the **2000 Neighborhood Health Map** (1990 Block Groups) are averaged in the Table to maintain simplicity. Refer to the Appendix of the Neighborhood Element for a complete breakdown of Block Groups by NIA.
- 2) Vital Signs are recorded by Census Block Group and do not necessarily conform to recognized neighborhood boundaries.