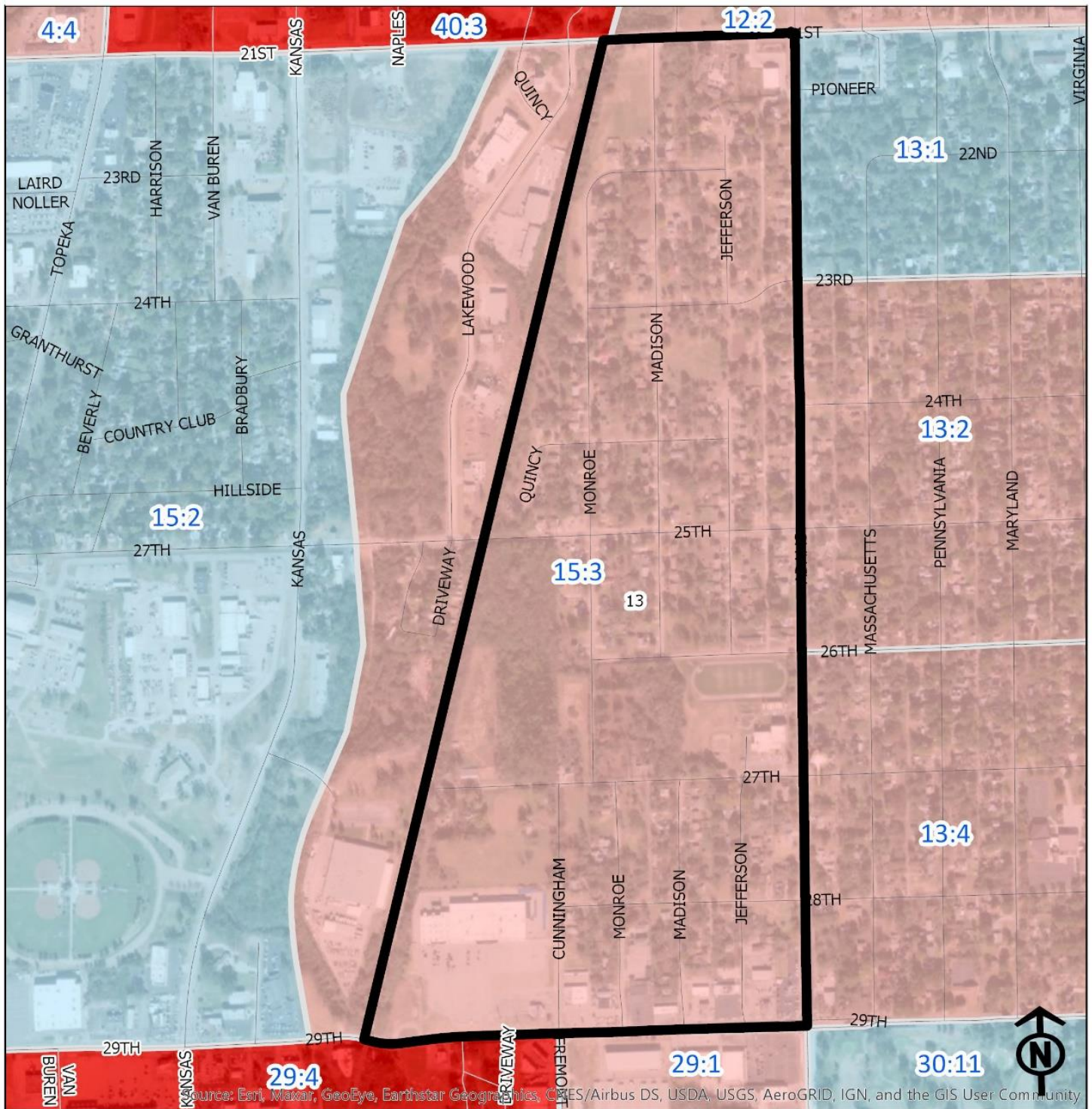


# 2020 Jefferson Square Neighborhood Health



Source: Esri, Maxar, GeoEye, Earthstar Geographics, CNES/Airbus DS, USDA, USGS, AeroGRID, IGN, and the GIS User Community

Block Groups

## Legend

- Healthy
- Out Patient
- At Risk
- Intensive Care

"Vital Signs" Which Determine Neighborhood Health Include:

- 1) % of Persons Below Poverty Level
- 2) Part 1 Crimes Per Capita
- 3) Average Residential Property Values
- 4) % of Owner Occupied Homes
- 5) Number of Boarded Houses

**JEFFERSON SQUARE**

Vital Signs	Block Group (Pop. 2019)	2000	2003	2007	2011	2014	2017	2020
1) % Persons Below Poverty	15:3 (556)	16%	30%	30%	12%	40%	33%	18%
2) Public Safety (Part 1 Crimes per 100 People)	15:3 (Out Patient)		16	15	19	15	12	25
3) Average Residential Property Values	15:3	\$49,485	\$41,710	\$60,140	\$66,420	\$66,479	\$62,534	\$71,015
4) Single Family Home Ownership	15:3	70%	74%	77%	62%	56%	57%	57%
5) Boarded Houses/Unsafe Structures	15:3	1	0	0	1	1	0.58	0.60
6) Neighborhood Health Composite (Rating)	15:3	3	2.8	2.8	2.6	2.4	2.6	2.6

- 1) Block Groups identified in Table 1 above represent 2000 & 2010 Census boundaries. Multiple Census Block Group data from the **2000 Neighborhood Health Map** (1990 Block Groups) are averaged in the Table to maintain simplicity. Refer to the Appendix of the Neighborhood Element for a complete breakdown of Block Groups by NIA.
- 2) Vital Signs are recorded by Census Block Group and do not necessarily conform to recognized neighborhood boundaries.