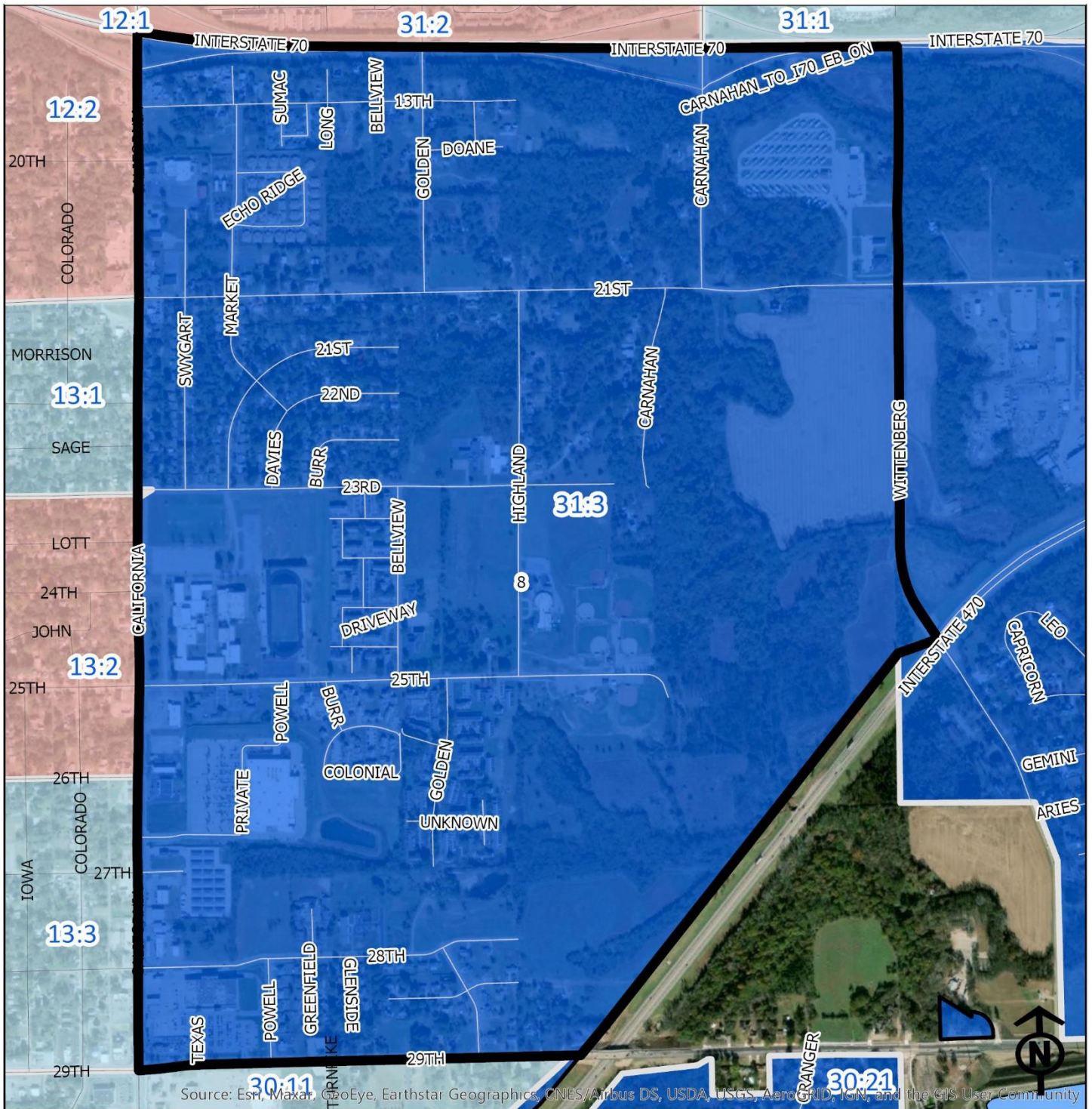


# 2020 Highland Acres Neighborhood Health



Source: Esri, Maxar, GeoEye, Earthstar Geographics, CNES/Airbus DS, USDA, USGS, AeroGRID, IGN, and the GIS User Community

## Block Groups

### Legend

- Healthy
- Out Patient
- At Risk
- Intensive Care

"Vital Signs" Which Determine Neighborhood Health Include:

- 1) % of Persons Below Poverty Level
- 2) Part 1 Crimes Per Capita
- 3) Average Residential Property Values
- 4) % of Owner Occupied Homes
- 5) Number of Boarded Houses

HIGHLAND ACRES

Vital Signs	Block Group (Pop. 2019)	2000	2003	2007	2011	2014	2017	2020
1) % Persons Below Poverty	31:3 (2,958)	19%	19%	19%	22%	32%	22%	22%
2) Public Safety (Part 1 Crimes per 100 People)	31:3	(At Risk)	21	21	26	19	23	18
3) Average Residential Property Values	31:3	\$68,930	\$106,680	\$68,840	\$120,150	\$132,909	\$164,846	\$183,880
4) Single Family Home Ownership	31:3	70%	86%	66%	66%	66%	80%	81%
5) Boarded Houses/Unsafe Structures	31:3	1	1	0	0	4	0.40	0.00
6) Neighborhood Health Composite (Rating)	31:3	2.8	3.2	2.8	3.0	2.6	3.0	3.4

\*2003 Census Block data included the residential areas east of SE Wittenberg Road between SE 21st Street and SE 29th Street, which is not part of the boundaries of the Highland Acres NIA. The 2000, 2007, 2011, and 2015 data sets, however, only measure the area within the boundaries of the Highland Acres NIA.

- 1) Block Groups identified in Table 1 above represent 2000 & 2010 Census boundaries. Multiple Census Block Group data from the **2000 Neighborhood Health Map** (1990 Block Groups) are averaged in the Table to maintain simplicity. Refer to the Appendix of the Neighborhood Element for a complete breakdown of Block Groups by NIA.
- 2) Vital Signs are recorded by Census Block Group and do not necessarily conform to recognized neighborhood boundaries.