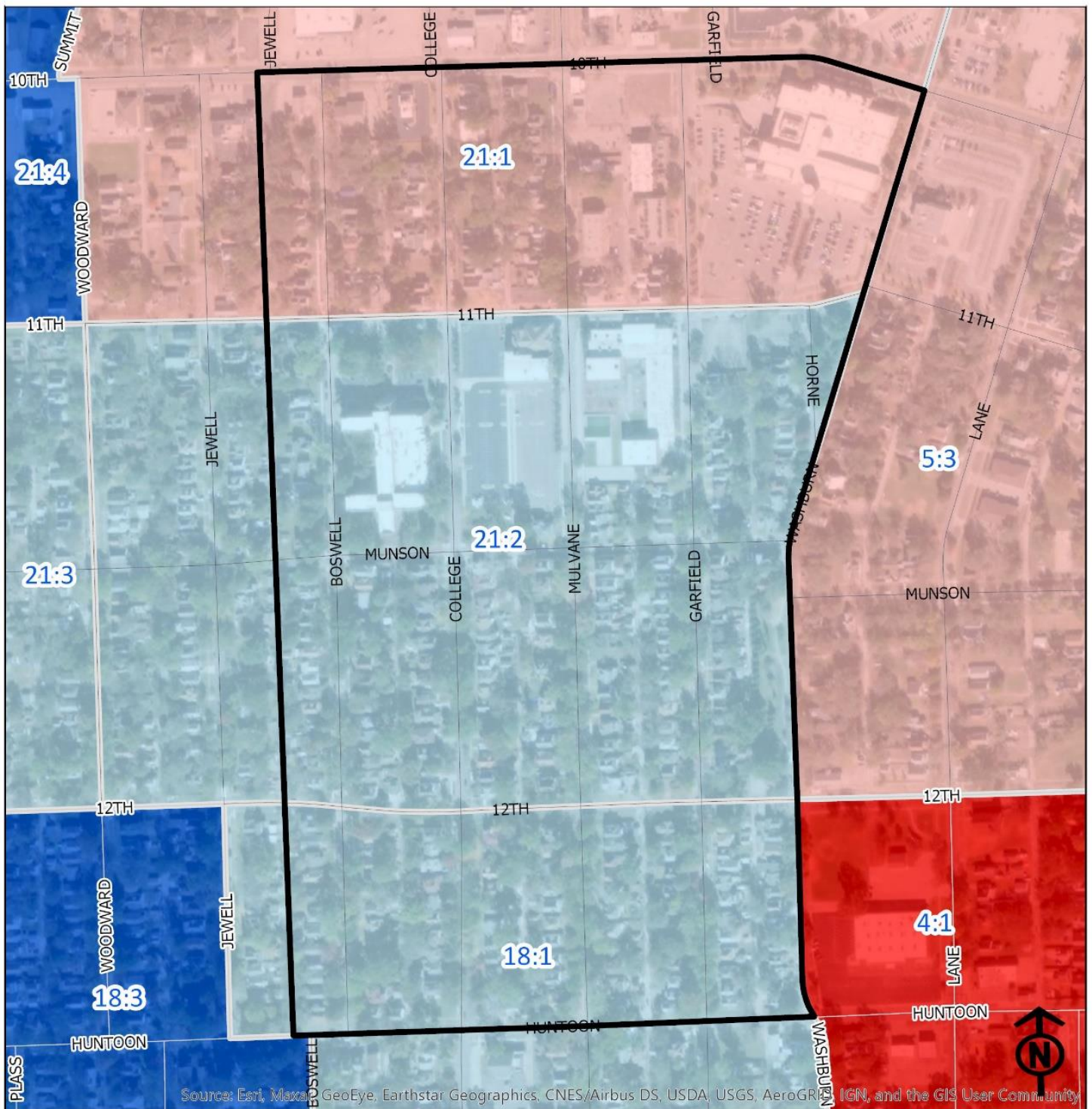


# 2020 Elmhurst Neighborhood Health



## Block Groups

### Legend

- Healthy
- Out Patient
- At Risk
- Intensive Care

"Vital Signs" Which Determine Neighborhood Health Include:

- 1) % of Persons Below Poverty Level
- 2) Part 1 Crimes Per Capita
- 3) Average Residential Property Values
- 4) % of Owner Occupied Homes
- 5) Number of Boarded Houses

**ELMHURST**

| Vital Signs                                     | Block Group (Pop. 2019) | 2000        | 2003     | 2007        | 2011     | 2014     | 2017     | 2020     |
|---|-------------------------|-------------|----------|-------------|----------|----------|----------|----------|
| 1) % Persons Below Poverty                      | 18:1 (922)              | Out Patient | 14%      | Out Patient | 25%      | 20%      | 38%      | 12%      |
|   | 21:1 (1,159)            | Out Patient | 3%       | At Risk     | 20%      | 25%      | 28%      | 42%      |
|   | 21:2 (479)              | Healthy     | 5%       | Out Patient | 5%       | 28%      | 29%      | 0%       |
| 2) Public Safety (Part 1 Crimes per 100 People) | 18:1                    | At Risk     | 14       | 11          | 15       | 12       | 17       | 15       |
|   | 21:1                    | At Risk     | 33       | 23          | 25       | 30       | 32       | 18       |
|   | 21:2                    | At Risk     | 13       | 12          | 10       | 10       | 12       | 12       |
| 3) Average Residential Property Values          | 18:1                    | At Risk     | \$61,828 | \$68,299    | \$70,728 | \$67,263 | \$65,351 | \$71,810 |
|   | 21:1                    | At Risk     | \$65,445 | \$55,475    | \$60,221 | \$57,715 | \$54,904 | \$59,774 |
|   | 21:2                    | At Risk     | \$47,242 | \$54,905    | \$61,558 | \$59,392 | \$53,455 | \$58,089 |
| 4) Single Family Home Ownership                 | 18:1                    | Healthy     | 80%      | 73%         | 70%      | 59%      | 61%      | 59%      |
|   | 21:1                    | At Risk     | 50%      | 56%         | 58%      | 53%      | 52%      | 47%      |
|   | 21:2                    | Out Patient | 67%      | 58%         | 58%      | 53%      | 50%      | 49%      |
| 5) Boarded Houses/Unsafe Structures             | 18:1                    | Out Patient | 2        | 0           | 0        | 3        | 0.24     | 0.73     |
|   | 21:1                    | Out Patient | 1        | 3           | 2        | 0        | 0.50     | 1.01     |
|   | 21:2                    | Out Patient | 3        | 0           | 0        | 2        | 0        | 1.19     |
| 6) Neighborhood Health Composite (Rating)       | 18:1                    | Out Patient | 3.2      | 3.6         | 3.2      | 2.8      | 2.4      | 2.8      |
|   | 21:1                    | At Risk     | 2.8      | 2.6         | 2.4      | 2.4      | 2.2      | 2.0      |
|   | 21:2                    | Out Patient | 2.8      | 3.4         | 3.4      | 2.8      | 3.0      | 3.0      |

- 1) Block Groups identified in Table 1 above represent 2000 & 2010 Census boundaries. Multiple Census Block Group data from the **2000 Neighborhood Health Map** (1990 Block Groups) are averaged in the Table to maintain simplicity. Refer to the Appendix of the Neighborhood Element for a complete breakdown of Block Groups by NIA.
- 2) Vital Signs are recorded by Census Block Group and do not necessarily conform to recognized neighborhood boundaries.