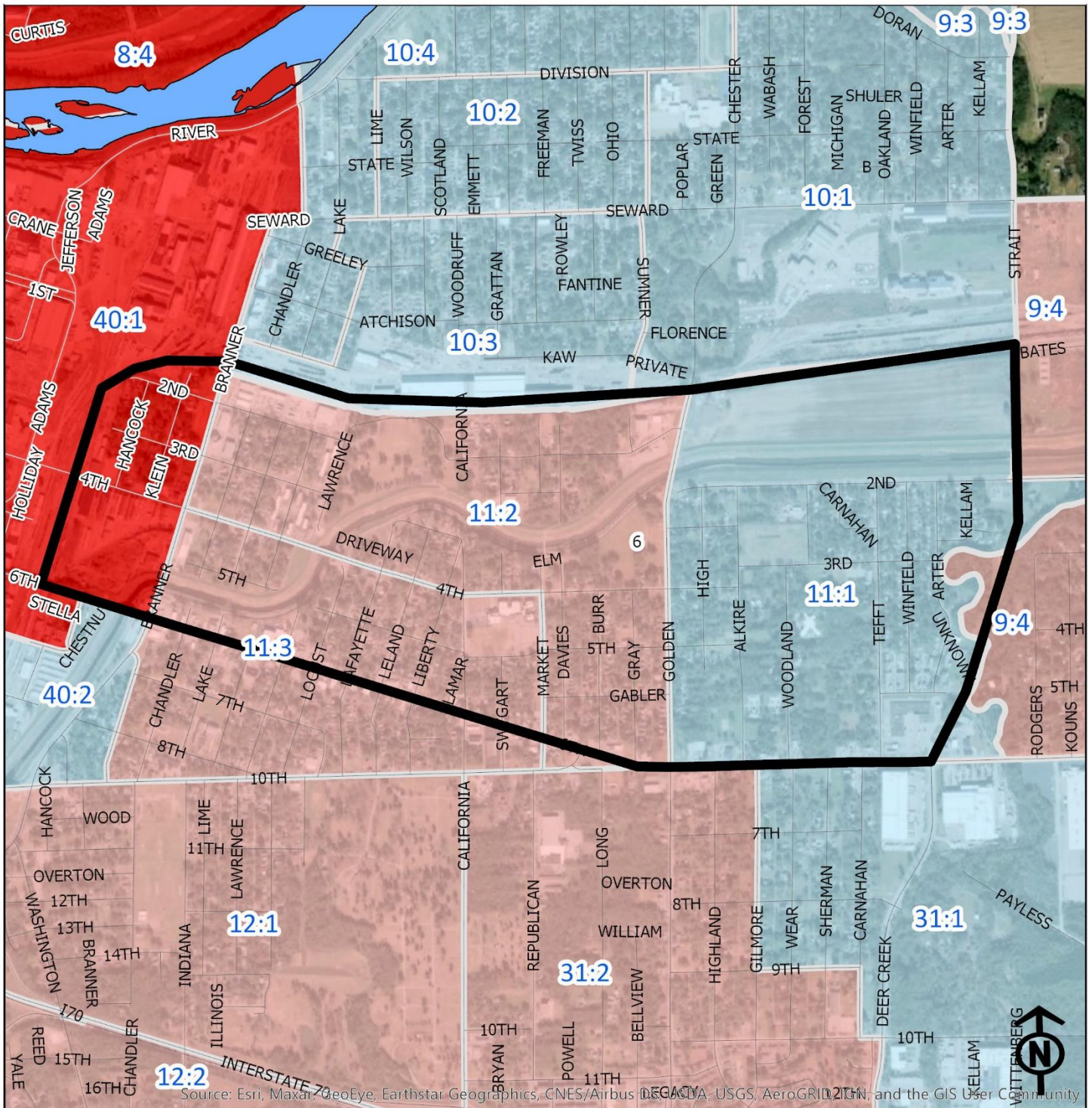


# 2020 East Topeka North Neighborhood Health



## Block Groups

### Legend

- Healthy
- Out Patient
- At Risk
- Intensive Care

"Vital Signs" Which Determine Neighborhood Health Include:

- 1) % of Persons Below Poverty Level
- 2) Part 1 Crimes Per Capita
- 3) Average Residential Property Values
- 4) % of Owner Occupied Homes
- 5) Number of Boarded Houses

**EAST TOPEKA NORTH**

Vital Signs	Block Group (Pop. 2019)	2000	2003	2007	2011	2014	2017	2020
1) % Persons Below Poverty	11:1 (1,180)	26%	19%	19%	39%	34%	23%	16%
	11:2 (1,436)	18%	30%	30%	55%	45%	55%	30%
	11:3 (654)	29%	27%	27%	60%	40%	23%	11%
2) Public Safety (Part 1 Crimes per 100 People)	11:1	(Intensive Care)	14	14	16	14	13	9
	11:2	(At Risk)	13	13	18	13	11	10
	11:3	(Intensive Care)	26	22	15	11	9	22
3) Average Residential Property Values	11:1	\$23,260	\$22,940	\$28,180	\$39,030	\$38,786	\$35,427	\$36,380
	11:2	\$15,300	\$17,100	\$28,690	\$34,590	\$35,677	\$35,233	\$38,495
	11:3	\$11,950	\$15,250	\$14,030	\$19,175	\$20,216	\$19,498	\$21,383
4) Single Family Home Ownership	11:1	48%	49%	41%	47%	45%	47%	48%
	11:2	34%	45%	36%	46%	44%	44%	43%
	11:3	32%	40%	36%	48%	51%	52%	53%
5) Boarded Houses/Unsafe Structures	11:1	2	1	2	1	0	0.30	0.00
	11:2	2	1	1	4	3	0.24	1.22
	11:3	6	11	6	4	4	1.82	0.99
6) Neighborhood Health Composite (Rating)	11:1	1.6	2.2	2.2	2.0	2.2	2.2	2.8
	11:2	2.0	2.0	2.0	1.8	1.8	2.2	2.2
	11:3	1.0	1.4	1.4	1.8	2.2	2.2	2.2

- 1) Block Groups identified in Table 1 above represent 2000 & 2010 Census boundaries. Multiple Census Block Group data from the **2000 Neighborhood Health Map** (1990 Block Groups) are averaged in the Table to maintain simplicity. Refer to the Appendix of the Neighborhood Element for a complete breakdown of Block Groups by NIA.
- 2) Vital Signs are recorded by Census Block Group and do not necessarily conform to recognized neighborhood boundaries.