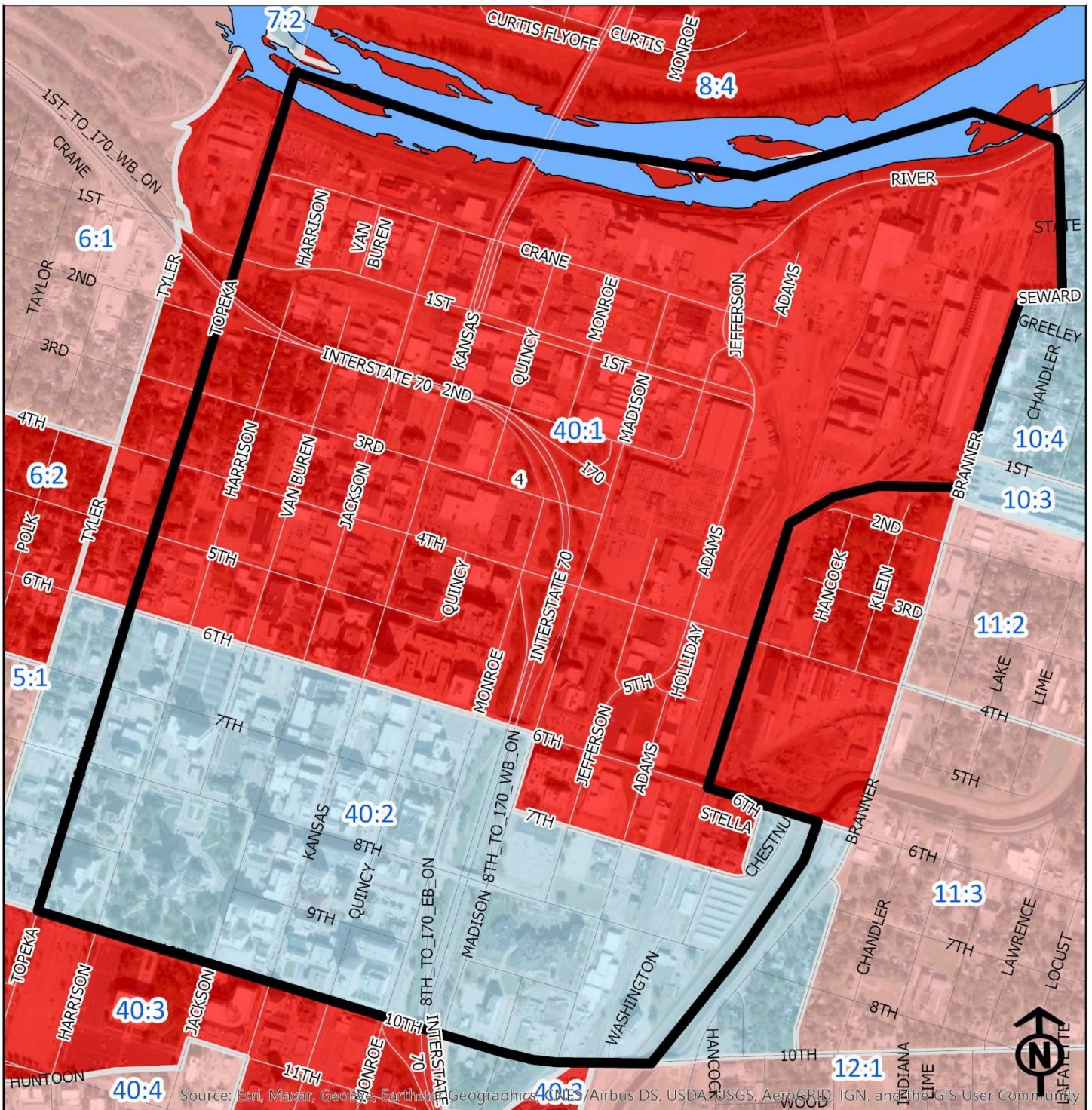


# 2020 Downtown Neighborhood Health



Source: Esri, Maxar, GeoEye, Earthstar Geographics, CNES/Airbus DS, USDA, USGS, AeroGRID, IGN, and the GIS User Community

## Legend

- Healthy
- Out Patient
- At Risk
- Intensive Care

"Vital Signs" Which Determine Neighborhood Health Include:

- 1) % of Persons Below Poverty Level
- 2) Part 1 Crimes Per Capita
- 3) Average Residential Property Values
- 4) % of Owner Occupied Homes
- 5) Number of Boarded Houses

Block Groups

**DOWNTOWN**

Vital Signs	Block Group (Pop. 2019)	2000	2003	2007	2011	2014	2017	2020
1) % Persons Below Poverty	40:1 (552)	24%	35%	35%	44%	15%	18%	19%
	40:2 (757)	21%	12%	12%	14%	28%	22%	4%
2) Public Safety (Part 1)	40:1	(At Risk)	54	61	41	26	30	35
Crimes per 100 People)	40:2	(At Risk)	67	44	24	19	14	28
3) Average Residential Property Values	40:1	\$16,745	\$17,500	\$32,640	\$45,890	\$58,720	\$44,177	\$62,502
	40:2	\$20,130	\$14,730	\$30,915	\$89,510	\$101,101	\$79,886	\$85,651
4) Single Family Home Ownership	40:1	21%	34%	30%	46%	36%	44%	42%
	40:2	20%	36%	28%	40%	28%	33%	40%
5) Boarded Houses/Unsafe Structures	40:1	3	2	2	0	1	0.73	1.66
	40:2	2	0	0	5	3	0.85	0.59
6) Neighborhood Health Composite (Rating)	40:1	1.6	1.6	1.4	2.0	2.4	2.0	1.8
	40:2	1.8	2.2	2.0	2.4	2.0	2.2	2.8

- 1) Block Groups identified in Table 1 above represent 2000 & 2010 Census boundaries. Multiple Census Block Group data from the **2000 Neighborhood Health Map** (1990 Block Groups) are averaged in the Table to maintain simplicity. Refer to the Appendix of the Neighborhood Element for a complete breakdown of Block Groups by NIA.
- 2) Vital Signs are recorded by Census Block Group and do not necessarily conform to recognized neighborhood boundaries.