

# CITY OF TOPEKA

City Communications  
City Hall, 215 SE 7<sup>th</sup> Street  
Topeka, KS 66603

Tel: 785-368-0991  
[www.topeka.org](http://www.topeka.org)

## For Immediate Release

Contact for further information: Rosie Nichols, Interim Co-Communications Director

January 12, 2024

### **City crews fill nearly 8,000 potholes in two weeks**

TOPEKA, Kan. — All City of Topeka Street Department crews focused their time and efforts on pothole repairs during an 11-day temporary emergency declaration to catch up on the numerous reports of potholes throughout the city. During this time, a total of 7,997 potholes were patched. 9,049 potholes have been repaired so far in 2024.

The city has resumed normal pothole patching procedures, which includes 4 crews assigned to pothole patching throughout the city. These crews will also continue to focus on residential areas that were not addressed during the emergency declaration.

Public Works Director Braxton Copley declared a temporary emergency for pothole patching on January 30, 2024, and extended the declaration through February 9, 2024.

All Street Department staff, including members of the night crew, worked during the course of the declaration to patch potholes throughout the city.

As a reminder, during the winter months, crews use a cold mix asphalt to fill potholes. Patches made with cold mix material are expected to be temporary, designed as a stop-gap measure to keep our streets serviceable. When the weather warms, city crews are able to use a hot mix asphalt to make longer-lasting repairs.

The best way for citizens to report a pothole is by submitting the information on the SeeClickFix website or mobile app, <https://www.topeka.org/seeclickfix/>.





# TOPEKA POLICE DEPARTMENT

Do you have a compliment or complaint about police conduct at TPD?

Police conduct can be reported by phone, email or in person the following ways:

## Professional Standards Unit Police Conduct Hotline

785-368-9595

[psu@topeka.org](mailto:psu@topeka.org)

Cyrus K. Holliday Building  
620 SE Madison St.

## Chief's Office

785-368-9437

[chiefsoffice@topeka.org](mailto:chiefsoffice@topeka.org)

Topeka Police Department  
320 S Kansas Ave., Ste. 100

## Police Watch Commander

785-368-9464

[wc@topeka.org](mailto:wc@topeka.org)

Topeka Police Department  
320 S Kansas Ave., Ste. 100

## Internal Investigator

785-368-3763

[investigator@topeka.org](mailto:investigator@topeka.org)

City Hall  
215 SE 7th St.

## Ombudsman's Office

785-368-3947

[ombudsman@topeka.org](mailto:ombudsman@topeka.org)

City Hall  
215 SE 7th St.





## WHAT YOU NEED TO KNOW

**Impact Avenues** is a collaboration with over **41 partner agencies** that work together to address the needs of homeless students and their families in Shawnee County. We utilize collective impact, a single point of service, and intensive case management to **help families** eliminate barriers and **find sustainable housing**. It is estimated that there are around **500 homeless students** in Topeka and Shawnee County Schools.

### To qualify:

A family **must be homeless** and have a **child enrolled in a school in Shawnee County**. A student is considered homeless if they lack a fixed, regular, and adequate nighttime residence (ie. Living in cars, motels, house sharing, couch surfing, emergency shelters, etc.) The family can let a school social worker know and they will be referred to Impact Avenues. Once approved, the students and their families get the support they need to obtain stable housing and assistance with overcoming barriers to success.

**Impact Thursday** is when we bring all of our partner agencies together under one roof to **allow families access to all services and resources** in one location.

For more information, visit [www.topeka.org/impact-avenues](http://www.topeka.org/impact-avenues) or contact Carrie Higgins at [chiggins@topeka.org](mailto:chiggins@topeka.org) or 785-368-3711



# DO YOU NEED A LAWYER?



## Free legal assistance for qualifying Shawnee County families

Housing  
security



Education



Government  
benefits



We are currently accepting applications from families  
in need of civil legal assistance related to  
**Evictions and housing, Guardianship of a child,  
Special Education and IEPs,  
Government benefits appeals,**  
and other civil legal issues.

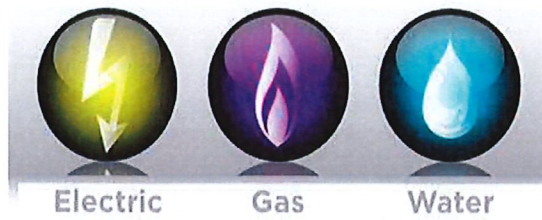
### To be eligible, applicants must:

1. Have at least 1 minor child residing with the applicant, who is under their care.  
**AND**
2. The applicant must reside in Shawnee County, Kansas.

*TFLP cannot represent clients in active Child in Need of Care or criminal cases.*

Apply online at [khd.link/tflp-app](https://khd.link/tflp-app),  
call us at (785) 285-9795, or  
email [topekafamilylegalproject@gmail.com](mailto:topekafamilylegalproject@gmail.com).





# Franchise Fee Credit Program

Walk-in's Welcome!

Wednesday & Thursday from 9AM – 3PM

455 SE Golf Park Blvd. (CRC Care Center @ Avondale East)

Each approved household can qualify for up to \$350.00 for credit towards utilities.

**Topeka Water \$75, Topeka Wastewater \$75, Gas \$100, Electric \$100**

To qualify for the once-a-year Franchise Fee utility credit program, you must be/have ONE of the following:

- ☐ **55 years or older, OR**
- ☐ **Disabled OR**
- ☐ **Children in the household (under 18 years)**

All applicants **MUST** be a Topeka resident (renter/homeowner)

Household annual income **CANNOT** exceed over \$37,750.00.

## LIST OF DOCUMENTS YOU WILL NEED TO BRING:

- ☐ Kansas I.D./Driver's license for adults in home
- ☐ Social Security card(s) for everyone in home
- ☐ Birth Certificates/Hospital letter for all children under 18 years
- ☐ 2023 annual income for whole household
- ☐ Current utility bill (gas, electric, water)



This program starts on January 31st, 2024, and ends on December 13th, 2024, or until funds run out. No refunds will be sent directly to the applicant but will be sent directly to the utility company.



January 2024



# Keep America Beautiful - Topeka/ Shawnee Co.

## SPONSORSHIP 2024 Packages!!

### LEGACY

**\$1,000** /Yearly

- ✓ Logo on Event Banner
- ✓ Name of company on back of t-shirts
- ✓ Logo on website with clickable link
- ✓ Logo displayed at office location
- ✓ Logo on Recycle Directory

Check Mark Box Press the select button

☐

OR

**SELECT**

### CHAMPION

**\$700** /Yearly

- ✓ Name of company on back of t-shirts
- ✓ Logo on website with clickable link
- ✓ Logo displayed at office location
- ✓ Logo on Recycle Directory

Check Mark Box Press the select button

☐

OR

**SELECT**

### SIGNATURE

**\$300** /Yearly

- ✓ Logo on website with clickable link
- ✓ Logo displayed at office location
- ✓ Logo on Recycle Directory

Check Mark Box Press the select button

☐

OR

**SELECT**

SCAN  
code  
below to  
become  
a  
sponsor  
today!



If this is a paper copy and you would like to drop off, please call Brittany Laughlin at 785-224-0446 to make arrangements.

If you would like to become a **PARTNER** (In-Kind donations) instead and join our mission to Beautify, Educate, Encourage volunteerism in our core focus areas of litter reduction, recycling and beautification, then please contact:

**Brittany Laughlin (Executive Director) at 785-224-0446 or email at [KAB@KABTOPSH.ORG](mailto:KAB@KABTOPSH.ORG)**





# 41st Annual GD&GD

## Get Down & Get Dirty

Join us for a **COMMUNITY WIDE**  
**Clean-Up** Event in celebration of Earth Day!

**SATURDAY**  
**APRIL 27TH, 2024**  
**10 A.M. - 12 P.M.**

Team pre-registration is required by March 22nd as t-shirt supplies are limited. Event details will be sent out once registration is received.



### VOLUNTEERS WILL RECEIVE:

- FREE Lunch
- FREE t-shirts (while supplies last)
- One FREE ticket for a chance at a door prize!  
(Prize winners must be present to win)

### CLEAN-UP TEAMS ARE FORMING NOW!!

To register as a team or as an individual please contact us by March 22nd at:

☎ 785-224-0446

✉ Kab@kabtopsh.org

If you would like to become a 2024 **SPONSOR** please go to: <https://givebutter.com/Yp2011> OR scan the QR Code below.  
If you would like to become a 2024 **PARTNER** (In-Kind) instead please contact 785-224-0446



Sponsors of 2023:







**How to...**

- Find a Job
- Get a Job
- Keep a Job

**+ The Reality and Expectations of employers!**

**Job Coaching**  
Jobs for Young Adults Program



**Ages 14-21**



**Reserve your spot today at**  
**TopekaYouthProject.com**







**TOPEKA FIRE  
DEPARTMENT**

Randy Phillips, Fire Chief  
324 SE Jefferson Street  
Topeka, KS 66607

Tel: 785-368-4000  
Fax: 785-368-4030  
[www.topeka.org](http://www.topeka.org)

## HOME FIRE SAFETY INSPECTION CHECKLIST

### Exterior

- Ensure home address numbers are a minimum of four (4) inches tall and clearly visible from the street
- For homes located more than 50 feet from the street, post address numbers at the driveway entrance
- Have tree limbs trimmed away from overhead electrical wires and chimney
- Remove leaves/debris from roof, eaves and gutters

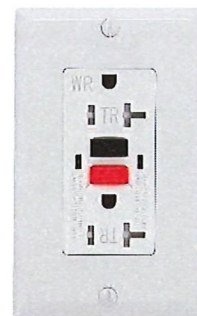
### Smoke Alarms & Carbon Monoxide (CO) Alarms

- Install smoke alarms outside sleeping area (hallway) and on every level of the home
- Install CO alarms in a central location outside sleeping area and on every level of the home
- Test smoke and CO alarms once a month; use a broom handle to reach ceiling mounted units
- Units with removable batteries, replace battery once a year (Use Daylight Savings Time as a reminder)
- Install adaptive smoke and CO alarms for occupants with special needs
- Replace smoke and CO alarm units every 10 years (or earlier if recommended by the manufacturer) and dispose of properly



### Electrical

- Do not overload electrical outlets; additional outlets should be installed by a qualified electrician
- Use power-strips equipped with a surge protector safety feature (pictured below)
- Inspect electrical cords for damage; electrical cords should never be frayed, cracked, pinned to the wall or placed under rugs
- Maintain air space around electrical equipment (TVs, DVD, stereo, etc.)
- Kitchen and bathroom outlets that are near countertop surfaces within six (6) feet of running water should have a Ground Fault Circuit Interrupter outlet (GFCI outlet pictured below)
- If there are young children in the home, install tamper-resistant outlets or outlet safety covers
- Extension cords should only be used for temporary power needs; additional outlets should be installed by a qualified electrician when needed.







**TOPEKA FIRE  
DEPARTMENT**

**Randy Phillips, Fire Chief**  
324 SE Jefferson Street  
Topeka, KS 66607

**Tel: 785-368-4000**  
**Fax: 785-368-4030**  
[www.topeka.org](http://www.topeka.org)

## **HOME FIRE SAFETY INSPECTION CHECKLIST**

### **Heating Equipment & Fireplace**

- Keep combustibles at least three (3) feet away from space heaters and fireplace
- Ensure space heaters are equipped with an automatic shut-off function
- Do not use propane heaters inside the home or use the oven to heat the home
- Replace furnace filters regularly
- Keep clutter and other combustibles away from the water heater and furnace
- Remove lint from clothes dryer after each cycle and clean exhaust duct (flexible tube) annually
- Install a spark arrester on chimney and have the chimney inspected and cleaned annually

### **Flammable Liquids & Hazardous Materials**

- Limit the amount of all chemicals stored in the home
- Store hazardous materials away from heat sources in containers with tight-fitting lids and correct identification labels
- Allow for ample ventilation when using flammable liquids and/or hazardous materials
- Store oily rags in an airtight metal container; oily rags placed in a pile can spontaneously ignite
- Dispose of household hazardous materials properly

### **Cooking Safety**

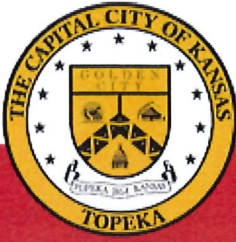
- Never leave cooking unattended; set a timer as a reminder
- Cuff sleeves and turn pot handles inward when cooking to prevent burn injuries
- Do not store combustibles in oven or on top of stove
- Dispose of BBQ and fireplace ashes in metal container at least three (3) feet away from combustibles
- Slide a lid to extinguish a cooking fire (see below)



### **Smoking & Candles**

- Never leave burning cigarettes or candles unattended
- Never smoke in bed
- Use ashtrays that have a center support feature
- Place candles in sturdy holders at least 12 inches away from combustibles (curtains, clothing, etc.)
- Avoid using candles in the bedroom and other areas where occupants may fall asleep
- Store matches and lighters out of the reach of children





**TOPEKA FIRE  
DEPARTMENT**

Randy Phillips, Fire Chief  
324 SE Jefferson Street  
Topeka, KS 66607

Tel: 785-368-4000  
Fax: 785-368-4030  
[www.topeka.org](http://www.topeka.org)

## HOME FIRE SAFETY INSPECTION CHECKLIST

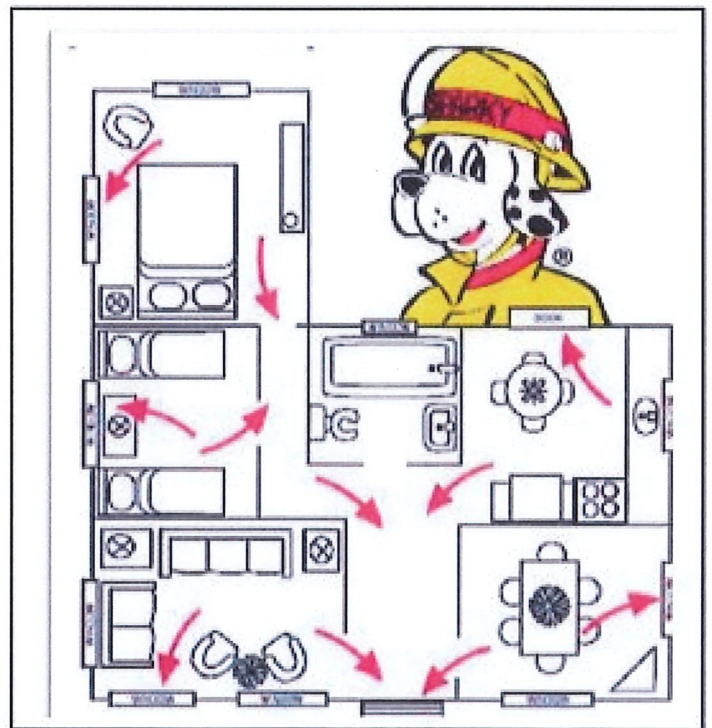
### Fire Extinguishers

- Install multipurpose (ABC) extinguishers so they are visible and accessible (near kitchen or garage)
- Operate a fire extinguisher by using **P.A.S.S.** method:
  - **PULL** the pin – **AIM** at the base of the fire – **SQUEEZE** – **SWEEP** the extinguisher side-to-side
- Inspect extinguishers annually. Pin should be secure, pressure gauge reads green and rotate extinguisher annually to loosen powder
- Discard extinguishers properly

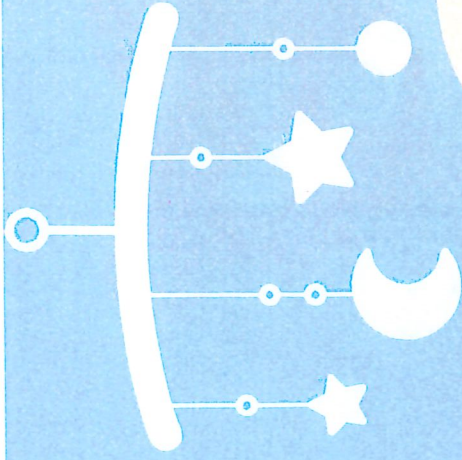


### Develop & Practice a Home Escape Plan

- Know two (2) exits out of every room
- Crawl low under smoke to escape fire
- Identify a safe meeting place outside (tree, mailbox, etc.)
- Dial 911 from a neighbor's phone or cellphone to report the fire
- Once out, STAY OUT!
- Practice your Home Escape Plan with every member of the household

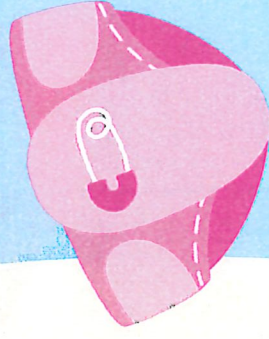






# Diaper Depot Program

- ✓ Age: Birth - age 3
- ✓ Sizes: Newborn - size 7
- ✓ Who: Families with an income under the 200% federal poverty line

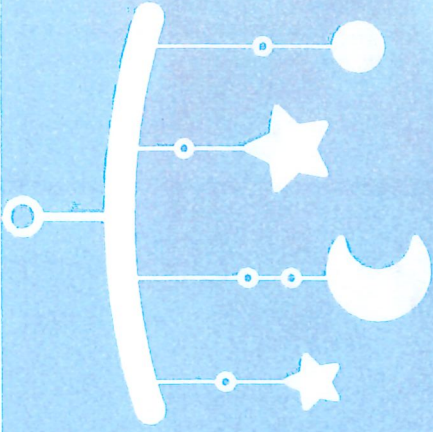


While we greatly appreciate all diaper sizes, please consult with our Family and Community Outcomes team to determine what sizes we need the most, at the time of your diaper drive or donation.

785-836-4500





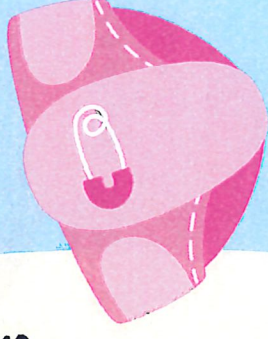


# Programa De Deposito De Pañales

- ✓ Edad: Nacimiento - 3 Años
- ✓ Tallas: Recien Nacido - Talla 7
- ✓ Quiénes: Familias con ingresos por debajo del umbral federal de pobreza del 200%

Si bien apreciamos mucho todos los tamaños de pañales, consulte con nuestro equipo de Resultados Familiares y Comunitarios para determinar qué tamaños necesitamos más en el momento de su donación o colecta de pañales.

785-836-4500







**Gil Carter Initiative Piano Lessons Every Friday  
At  
2620 SE 23<sup>rd</sup> Street, Topeka 66605**

**Children 7 to 18 years old**

**TIME: 4:30 OR 5:00pm**

**FEE: No Charge, Commitment is expected.**

**CONTACT: 785 260 9195  
gcarterinitiative@gmail.com**



# Nonprofit Resource Workshops

Attend these workshops to learn about nonprofit funding resources. Sessions are offered either on Zoom or in the Learning Center at the Topeka and Shawnee County Public Library. Each workshop features Foundation Directory and Candid resources, followed by a facilitated and coach-like conversation about local nonprofit strategies and challenges. For more information, contact Community Connections Librarian Lissa Staley [estaley@tscpl.org](mailto:estaley@tscpl.org). Register for workshops at [tscpl.org/events](http://tscpl.org/events).

## How Candid Helps Nonprofits & Using your Candid Profile

Learn how Candid resources can help your nonprofit thrive with resources to help you effectively fundraise, learn from peers, and share up-to-date profile information with potential donors.

- Tue, Jan 30 | 10-11:30am | ZOOM
- Thu, Feb 8 | 1-3pm | Learning Center

## Introduction to Fundraising Planning

Learn strategies for devising a plan that best reflects the organization's needs and resources, including making a case for support, creating a plan of action, and tips on diversifying the organization's fundraising base.

- Tue, Feb 27 | 10-11:30am | ZOOM
- Thu, Mar 7 | 1-3pm | Learning Center

## Introduction to Finding Grants

Learn who funds nonprofits and their motivations; what funders really want to know about the organizations they are interested in funding; and how to identify potential funders and make the first approach.

- Tue, Mar 26 | 10-11:30am | ZOOM
- Thu, Apr 4 | 1-3pm | Learning Center

## Introduction to Foundation Directory

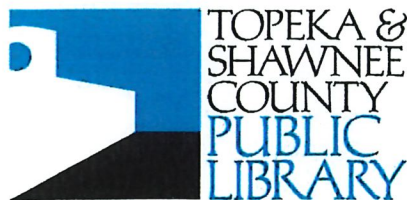
Learn how to search Foundation Directory for grantmakers who have funded organizations working on causes and with communities similar to those they serve.

- Tue, Apr 23 | 10-11:30am | ZOOM
- Thu, May 2 | 1-3pm | Learning Center

## Introduction to Proposal Writing

Learn the basic elements of a standard project grant proposal to a foundation; the "do's" and "don'ts" of writing and submitting a proposal; and how to follow up whether the answer is yes or no.

- Tue, May 21 | 10-11:30am | ZOOM
- Thu, May 30 | 1-3pm | Learning Center



These classes are brought to you in partnership with Candid, a nonprofit that helps other nonprofits serve their communities. As a Candid community member, the library offers Candid's key tools including GuideStar and Foundation Directory.

1515 SW 10th Ave | Topeka, KS 66604-1374  
785-580-4400 | [tscpl.org](http://tscpl.org)



# Virtual Neighborhood Accountability Board Training

---

Empower yourself with tools for restorative justice in your community. Explore new ways to restoratively repair harm, such as shoplifting or underage drinking.

**March 13th, 2024 | 9 AM-  
4 PM**

**Virtual Zoom Training**

More information at  
[ccrkc.org/trainings](http://ccrkc.org/trainings) or  
816-461-8255

**FREE for Jackson  
County Residents! \$50  
for those out of county**

**Thank you to Jackson County COMBAT for funding  
this training**



Jackson County  
**COMBAT**

CCR





**JAYHAWK**  
AREA AGENCY  
ON AGING, INC.

*Shawnee, Jefferson & Douglas Counties*



# Volunteers Needed

Jayhawk Area Agency on Aging is currently looking for dedicated people who are inspired to help us with our Care 4 All Respite program. Based on the national model [www.respiteforall.org](http://www.respiteforall.org)

## **We need help with :**

mixing and mingling with an awesome group of seniors who just happened to have memory issues

**Come for the day or part of the day; 2 days a week, once a month or whatever your schedule allows.**

## **Locations :**

3312 Calvin Dr. Lawrence  
3509 SW Burlingame, Topeka

- **play an instrument**
- **great at crafts**
- **inspiring chef**
- **have a sweet pet**
- **provide a meal**

**Come be part of our team**



for sign up information call  
Michele at (785) 236-1367 or email  
[mdillon@jhawkaaa.org](mailto:mdillon@jhawkaaa.org)

