



**Public Health**  
Prevent. Promote. Protect.

Shawnee County Health Department

**Shawnee County Health Department**  
Teresa Fisher, Director  
2600 SW East Circle Dr., Topeka, KS 66606  
Ph. 785.251.5600 | Fax 785.251.5696  
[www.shawneehealth.org](http://www.shawneehealth.org)

**FOR IMMEDIATE RELEASE**  
08/25/2022

**CONTACT: Craig Barnes**  
Division Manager/PIO  
Office (785) 251-5612  
Mobile (785) 806-6310

### **MEDIA RELEASE**

#### **Shawnee County Health Department Awarded National Accreditation Through the Public Health Accreditation Board**

**Topeka, Kan.** – The Shawnee County Health Department (SCHD) has been notified that it has been awarded national accreditation through the Public Health Accreditation Board (PHAB). PHAB is a nonprofit organization that administers a rigorous national accreditation program which has local health departments across the nation demonstrate how they promote and protect the health of the communities they serve. PHAB’s mission is to advance and transform public health practice by championing performance improvement, strong infrastructure and innovation.

“We are extremely honored to be recognized by the Public Health Accreditation Board for the amazing work our team does ensuring that Shawnee County is the best place to live, work and play,” said Teresa Fisher, Director of the SCHD. “Becoming accredited is evidence of the continual excellence of our department and I am especially proud of our staff for the time and effort they put in every day. It is because of them that we are able to offer quality and essential public health services to our community.”

The national accreditation program, jointly supported by the Centers for Disease Control and Prevention and the Robert Wood Johnson Foundation, sets standards against which the nation’s more than 3,000 governmental public health departments can continuously improve the quality of their services and performance. To receive accreditation, a health department must undergo a rigorous, multi-faceted, peer reviewed assessment process to ensure it meets or exceeds a set of quality standards and measures.

“Whenever you see our seal of accreditation, you will know that the Shawnee County Health Department has been rigorously examined and meets or exceeds national standards that promote continuous quality improvement for public health,” Fisher said. “By continuing to improve our services and performance, we can be sure we are meeting the public health needs of those we serve as effectively as possible.”

The SCHD becomes one of more than 300 health departments across the United States accredited by PHAB; including, one of seven county health departments in Kansas (Douglas, Johnson, Reno, Riley, Sedgwick and Wyandotte) to achieve national accreditation along with the Kansas Department of Health and Environment and the Fort Riley Department of Public Health.

Public health departments play a critical role in protecting and improving the health of people and communities. In cities, towns, and states across the nation, health departments provide a



**Public Health**  
Prevent. Promote. Protect.

Shawnee County Health Department

**Shawnee County Health Department**  
Teresa Fisher, Director  
2600 SW East Circle Dr., Topeka, KS 66606  
Ph. 785.251.5600 | Fax 785.251.5696  
[www.shawneehealth.org](http://www.shawneehealth.org)

range of services aimed at promoting healthy behaviors; preventing diseases and injuries; ensuring access to safe food, water, clean air, and life-saving immunizations; and preparing for and responding to public health emergencies.

“The Shawnee County Health Department joins the growing ranks of accredited health departments in a strong commitment to their public health mission,” said PHAB President and CEO Kaye Bender, PhD, RN, FAAN. “The peer-review process provides valuable feedback to inform health departments of their strengths and areas for improvement, so that they can better protect and promote the health of the people they serve in their communities. Residents of a community served by a nationally accredited health department can be assured that their health department has demonstrated the capacity to protect and promote the health of that community.”

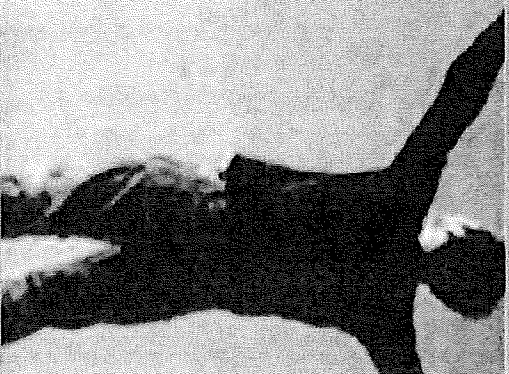
To learn more about PHAB visit <https://phaboard.org/>.

###

*Shawnee County Health Department is committed to working in partnership with our community to promote and protect the optimal health of all people by bridging gaps to eliminate health inequities, respecting the diversity of our community, through adaptive and innovative processes.*

**Follow us on Facebook, Twitter, Instagram and YouTube**

# CELEBRATE RECOVERY



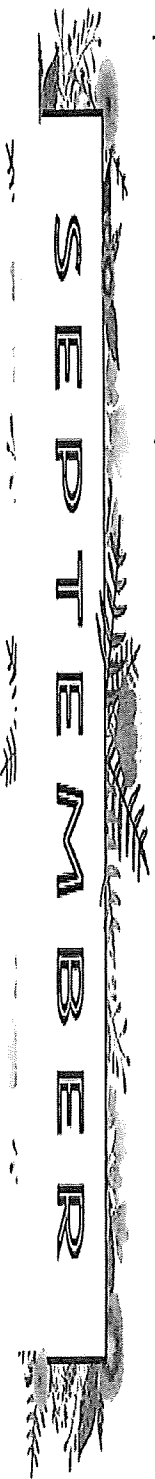
# WEDNESDAY'S 5:30 PM

Celebrate Recovery offers a person the opportunity to participate in a group fellowship where love and hope combine with God's purpose to mend our lives.



1320 SE 6th Ave Topeka, KS 66607

Topeka LULAC Senior Center [www.topekalulacseniorcenter.com](http://www.topekalulacseniorcenter.com)



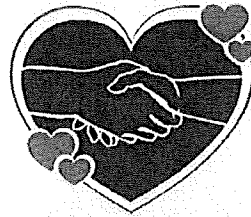
\*\*\*\*\*Monday's in September-Valeo Mental Health Screenings 10-12pm-Here

Center hours 8-4pm Monday—Friday

SUNDAY	MONDAY	TUESDAY	WEDNESDAY	THURSDAY	FRIDAY	SATURDAY
Looking for a fun place to hang out? Give us a call! 234-5809. We have many new friends for you to meet!				1 Senior Trivia 10am	2 Kansas Museum of History/Lunch Out 10:30-2pm	
Harvester's SENIOR FOOD PANTRY 3 <sup>rd</sup> Friday of each month	5 Labor Day-Closed	6 Holiday Closed	7 Tai Chi 11am	8 Happy Birthday Cake/Ice Cream Sally!	9 Prairie Band Casino -No Meals on Wheels	
Visit our little LULAC Library located in front of our building!	12 Walmart Shopping 1pm Valeo-10-12	13 Lisa/Basket Completion 10am GSH-1pm	14 Tai Chi 11am Baker Nursing 10am	15 BINGO! 12:30	16 Harvesters Senior Food Pantry-Karaoke	
Did you know? We are on Facebook, Twitter, and YouTube!	19 Cooks n' The Kitchen-Cherry Turnovers 10am	20 B&B \$5.00 Movie	21 Tai Chi 11am Baker Nursing 10am	22 Biscuits/Gravy Here 10:30am	23 Sugar Creek-All Day Leave 10am	24 LULAC FISHING DERBY!!
	26 Aldi Shopping 1pm Valeo-10-12	27 Perkins-Breakfast 10am	28 Tai Chi 11am	29 Owls Nest 29 <sup>th</sup> Adams 1pm	30 Mani's/Haircut-Beauty School 10am	



*Behavioral Health Care*



TOPEKA LULAC  
SENIOR CENTER

**SEPTEMBER IS NATIONAL  
SUICIDE PREVENTION MONTH**

**VALEO WILL BE PROVIDING  
FREE MENTAL HEALTH  
ASSESSMENTS EVERY  
MONDAY IN SEPTEMBER  
FROM 10 AM - 12 PM.**

**Topeka LULAC Senior Center  
1502 NE Seward Avenue**

---

QUESTIONS: PLEASE CONTACT  
AIMEE COPP-HASTY AT  
ACOPPHASTY@VALEOTOPEKA.ORG

5th Annual Senior/Youth  
Fishing Derby \$20 per Team  
Sept. 24th - 10-1pm



Cedar Crest - Ponds 1 + 2

**Maria Anderson**

---

**From:** Rachelle Vega-Retana  
**Sent:** Wednesday, August 24, 2022 7:48 AM  
**Subject:** FW: Traffic Disruptions: REMINDER - D-1 KDOT News: U.S. 24 project begins Thursday in Topeka

**Importance:** High

Northeast District Office  
121 S.W. 21st Street  
Topeka, KS 66612-1429



phone: 785-296-3881  
fax: 785-296-3720  
[www.ksdot.org](http://www.ksdot.org)

Julie Lorenz, Secretary

Laura Kelly, Governor

**IMMEDIATE RELEASE**

Aug. 23, 2022

**For more information:**

Kate Craft  
[Kate.Craft@ks.gov](mailto:Kate.Craft@ks.gov)

**U.S. 24 project begins Thursday in Topeka**

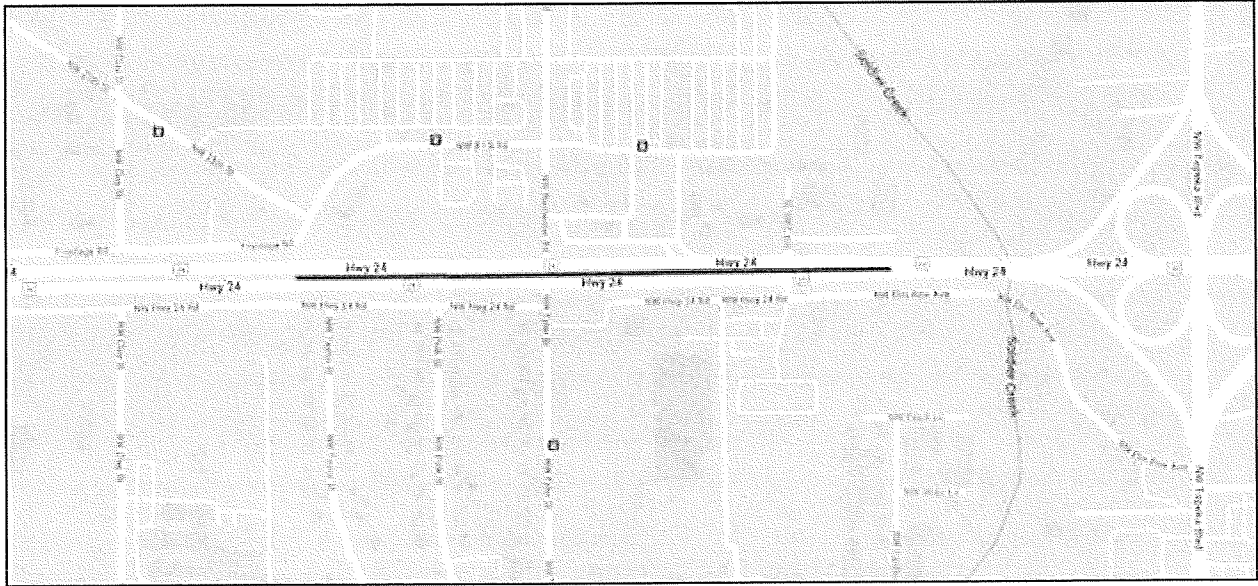
A milling and overlay project on U.S. 24 in Topeka is scheduled to begin Thursday, Aug. 25, weather permitting. The project spans less than half a mile on U.S. 24 to the east and west of the N.W. Rochester Road/N.W. Tyler Street intersection.

According to the Kansas Department of Transportation, traffic will encounter intermittent lane closures on U.S. 24, N.W. Rochester Road and N.W. Tyler Street. Traffic signals at the intersection will continue to operate as normal, and flaggers will also alert motorists to slow down in the area.

Work will take place 24 hours a day, Monday through Friday, and Saturdays as needed. There will be a speed reduction and 11-foot width restriction through the work zone. Drivers should plan for delays of up to 15 minutes.

Superior Bowen Asphalt of Kansas City, Mo., is the contractor on the \$1.7 million project, which is expected to be complete by late October.

KDOT urges all motorists to be alert and obey the warning signs when approaching and driving through a highway work zone. To stay aware of highway construction projects across Kansas, go to [www.kandrive.org](http://www.kandrive.org) or call 5-1-1.



###

This information can be made available in alternative accessible formats upon request. For information about obtaining an alternative format, contact the KDOT Office of Public Affairs, 700 SW Harrison St., 2<sup>nd</sup> Fl. West, Topeka, KS 66603-3745 or phone 785-296-3585 (Voice) / 7-1-1 (Hearing Impaired).

Click below to connect to KDOT's Social Networks:





***For Immediate Release***

**Media Contact:**

Shelley Robertson

Development Director

785.233.9648

[shelley.robertson@usc.salvationarmy.org](mailto:shelley.robertson@usc.salvationarmy.org)



DOING THE  
MOST GOOD

## **Topeka Salvation Army Asking for Help From the Community**

**Topeka, Kan., August 23, 2022,**

Starting, Thursday, September 1, 2022, through, Tuesday, November 1<sup>st</sup>, 2022, The Topeka Salvation Army is asking for the community's help collecting items for three low-income nursing homes:

Countryside Health Center, 440 SE Winfield

Providence Nursing Home, 1112 SE Republican

Advena Nursing Home, 2015 SE 10<sup>th</sup> Ave.

Items needed include puzzles, coloring books, crayons/colored pencils, reading books, shampoo/conditioner, and body lotion. These items will be put together along with other items during the holiday season to create baskets for those individuals in the nursing homes. Often, they are the forgotten segment of the population during the Christmas season!

Items may be left at Topeka Salvation Army, 1320 SE 6<sup>th</sup> Street, at the front desk – hours of operation for The Salvation Army, 9a to 11a and 1p to 4p., you may also call, 785.233.9648 if you have any questions.

Contact: Shelley Robertson, development director, Topeka Salvation Army, 1320 SE 6<sup>th</sup>,  
[shelley.robertson@usc.salvationarmy.org](mailto:shelley.robertson@usc.salvationarmy.org)

# # #

### **About The Salvation Army**

The Salvation Army annually helps nearly 23 million Americans overcome poverty, addiction and economic hardships through a range of social services. By providing food for the hungry, emergency relief for disaster survivors, rehabilitation for those suffering from drug and alcohol abuse, and clothing and shelter for people in need, The Salvation Army is doing the most good at 7,600 centers of operation around the country. In the first-ever listing of "America's Favorite Charities" by The Chronicle of Philanthropy, The Salvation Army ranked as the country's largest privately funded, direct-service nonprofit. For more information about the Kansas and Western Missouri Division, visit [SalArmyMoKan.org](http://SalArmyMoKan.org). Follow us on Twitter: [@SalArmyMoKan](https://twitter.com/SalArmyMoKan) and [#DoingTheMostGood](https://twitter.com/DoingTheMostGood).





**CONTACT:** Nikki MacMillan, COO  
Topeka Habitat for Humanity  
785-234-4322 ext. 106 or 785-249-5455 (cell)  
coo@topekahabitat.org

***Topeka Habitat for Humanity receives \$25,000 grant from Lowe's to improve home safety and health outcomes in Shawnee County***

**Topeka, KS (8/22/2022)** — Topeka Habitat for Humanity has received a \$25,000 grant from Lowe's to help complete 5 Housing Plus repair projects in Shawnee County. The funding is part of Lowe's partnership renewal with Habitat for Humanity International that includes a donation of \$2.5 million to support 100 local Habitat organizations undertaking home repair and rehab projects across the U.S.

"We are thrilled to be partnering with Lowe's to create sustainable and lasting impact for the aging homeowners in our community. Access to safe, decent and affordable shelter becomes even more important as we age and we are so thankful to have Lowe's supporting our Housing Plus approach to our Aging in Place program," said Janice Watkins, CEO, Topeka Habitat for Humanity.

The granted funds will allow Topeka Habitat to focus on repairs that improve the quality of life for those that are aging in their homes with a focus on safe, accessible and energy-efficient repairs that will allow the homeowners to continue to live in their homes with increased autonomy, accessibility and dignity. This work is vitally important as Aging in Place is a focus for the City of Topeka and housing partners, as the number of residents age 65 and older is projected to increase by 24 percent over the next five years, according to the Citywide Housing Market Study and Strategy Summary.

**Topeka Habitat will be kicking off this grant with a volunteer day on August 23, 2022 from 8:30-3:30 to build a ramp for an aging homeowner at 1340 N. School Auburn, KS 66402.**

Access to quality, affordable home repair and modification services continues to be out of reach for low to moderate income households across the nation. With the support of this funding, Topeka Habitat will be able to further its efforts of helping aging homeowners in Shawnee County address critical health and safety issues in their homes.

Lowe's and Habitat began their partnership in 2003. Since then, Lowe's has supported many of the global housing nonprofit's efforts, including the Women Build Program and Habitat's Neighborhood Revitalization program. Lowe's has also supported Habitat's Cost of Home national advocacy campaign and sponsored local Habitat builds and employee volunteer days, in addition to providing affiliate grants and donated products. Lowe's commitment through 2022 will bring the company's total contributions to Habitat to more than \$84 million.

**About Topeka Habitat for Humanity**

Topeka Habitat is a non-profit, community housing development organization that brings people together to build homes, communities and hope. Dedicated to ending substandard housing, Topeka Habitat builds and repairs homes in a partnership model. All of these efforts are additionally supported by the Topeka ReStore, located at 121 NE Gordon, which sells donated home improvement items at a discount to raise funds for Topeka Habitat. For more information visit [www.topekahabitat.org](http://www.topekahabitat.org) or call 785-234-4322.

**About Lowe's**

Lowe's Companies, Inc. is a FORTUNE 50 home improvement company serving approximately 19 million customer transactions a week in the United States and Canada. With fiscal year 2021 sales of over \$96 billion, Lowe's and its related businesses operate or service nearly 2,200 home improvement and hardware stores and employ over 300,000 associates. Based in Mooresville, N.C., Lowe's supports the communities it serves through programs focused on creating safe, affordable housing and helping to develop the next generation of skilled trade experts. For more information, visit [Lowe.com](http://Lowe.com).