



TRANSPORTATION  
IN MOTION

**TIP**  
AMENDMENT

## **Amendment # 3 2021-2024**

**Policy Board Date: 6/24/21**

### **Projects Included:**

1. KA-1266-04 I-70 Polk/Quincy Viaduct & Approach Roadway: (Amendment) KDOT
2. KA-1266-06 I-70 Polk/Quincy Viaduct: ROW/Building Demolition: (Amendment) KDOT
3. TE-0494-01 10<sup>th</sup> St. Shared Use Path (Revision) City
4. TE-0503-01 Robinson Trail Extension: (Completes Deer Creek Southern portion): (Revision) County
5. TE-0505-01 Bikeways Master Plan Phase IV (pt.1): (Revision) City
6. TE-0505-02 Bikeways Master Plan Phase IV (pt.2): (Revision) City
7. TE-0505-03 Bikeways Master Plan Phase IV (pt.3): (Revision) City



**METROPOLITAN TOPEKA  
PLANNING ORGANIZATION**  
620 SE MADISON | TOPEKA KS  
[www.topekamtpo.org](http://www.topekamtpo.org) | 785.368.3728



**METROPOLITAN TOPEKA  
PLANNING ORGANIZATION**  
620 SE MADISON | TOPEKA KS  
[www.topekamtpo.org](http://www.topekamtpo.org) | 785.368.3728

Transportation  
Improvement  
Program

**TIP**

## PROJECT DATA SHEET

<b>Amendment</b>	<b>2021-2024 TIP</b>
	TIP #: 1-16-02-01      KDOT#: KA-1266-04
<b>Project Type:</b>	Roadways & Bridges
<b>Jurisdiction:</b>	KDOT
<b>Project:</b>	I-70 Polk/Quincy Viaduct & Approach Roadway
<b>Fiscal Year(s):</b>	2021-2026
<b>Location:</b>	I-70 Polk/Quincy Viaduct & Approach Roadway, Topeka, Kansas (West Phase)
<b>Total Project Cost:</b>	\$307,251,345

### PROJECT TYPES:

Transportation  
Alternative;  
Roadways & Bridges;  
Transit/Paratransit

**PROJECT Description and Justification:** Reconstruct I-70 to 6 lanes on a partial offset alignment.

**REASON FOR CHANGE:** Cost increase of 28% (ROW phase increase). Project authorized for PE, ROW and UTIL work phases ONLY. Total project cost amount is for planning purposes ONLY.

Please attach a map showing the location of the project

### EXPENSE SUMMARY (x1000)

*Phase	Year of Obligation	Federal (\$)	State (\$)	AC?	Local(\$)	TOTAL COST (\$)	Federal Source	AC Conv. Yr.
PE	2021	\$ -	\$ 10,000.0	x	\$ -	\$ 10,000.0		
ROW	2021	\$ -	\$ 15,000.0	x	\$ -	\$ 15,000.0		
UTIL	2023	\$ -	\$ 25,000.0	x		\$ 25,000.0		
PE		\$ 9,000.0	\$ (9,000.0)		\$ -	\$ -	NHPP	2026
ROW		\$ 3,600.0	\$ (3,600.0)		\$ -	\$ -	NHPP	2026
UTIL		\$ 22,500.0	\$ (22,500.0)		\$ -	\$ -	NHPP	2026
<b>TOTAL</b>		<b>\$ 35,100.0</b>	<b>\$ 14,900.0</b>		<b>\$ -</b>	<b>\$ 50,000.0</b>		

\*PE (Preliminary Engineering & Design); ROW (Right-of-Way Acquisition); UTIL (Utility Work); Const (Construction); or CE (Construction Engineering) Other



**METROPOLITAN TOPEKA  
PLANNING ORGANIZATION**  
620 SE MADISON | TOPEKA KS  
[www.topekamtpo.org](http://www.topekamtpo.org) | 785.368.3728

Transportation  
Improvement  
Program

**TIP**

## PROJECT DATA SHEET

**Amendment** **2021-2024 TIP**  
TIP #: 1-21-01-1 KDOT#: KA-1266-06

**Project Type:** Roadways & Bridges

**Jurisdiction:** KDOT

**Project:** I-70 Polk/Quincy Viaduct: ROW/ Building Demolition

**Fiscal Year(s):** 2021-2025

**Location:** I-70 Polk/Quincy Viaduct: from Topeka Boulevard to Kansas Ave. in Topeka

**Total Project Cost:** \$26,080,000

### PROJECT TYPES:

Transportation  
Alternative;  
Roadways & Bridges;  
Transit/Paratransit

**PROJECT Description and Justification:** ROW Acquisition, Building Demolition, Archeological Survey and Investigation and Utility Relocations

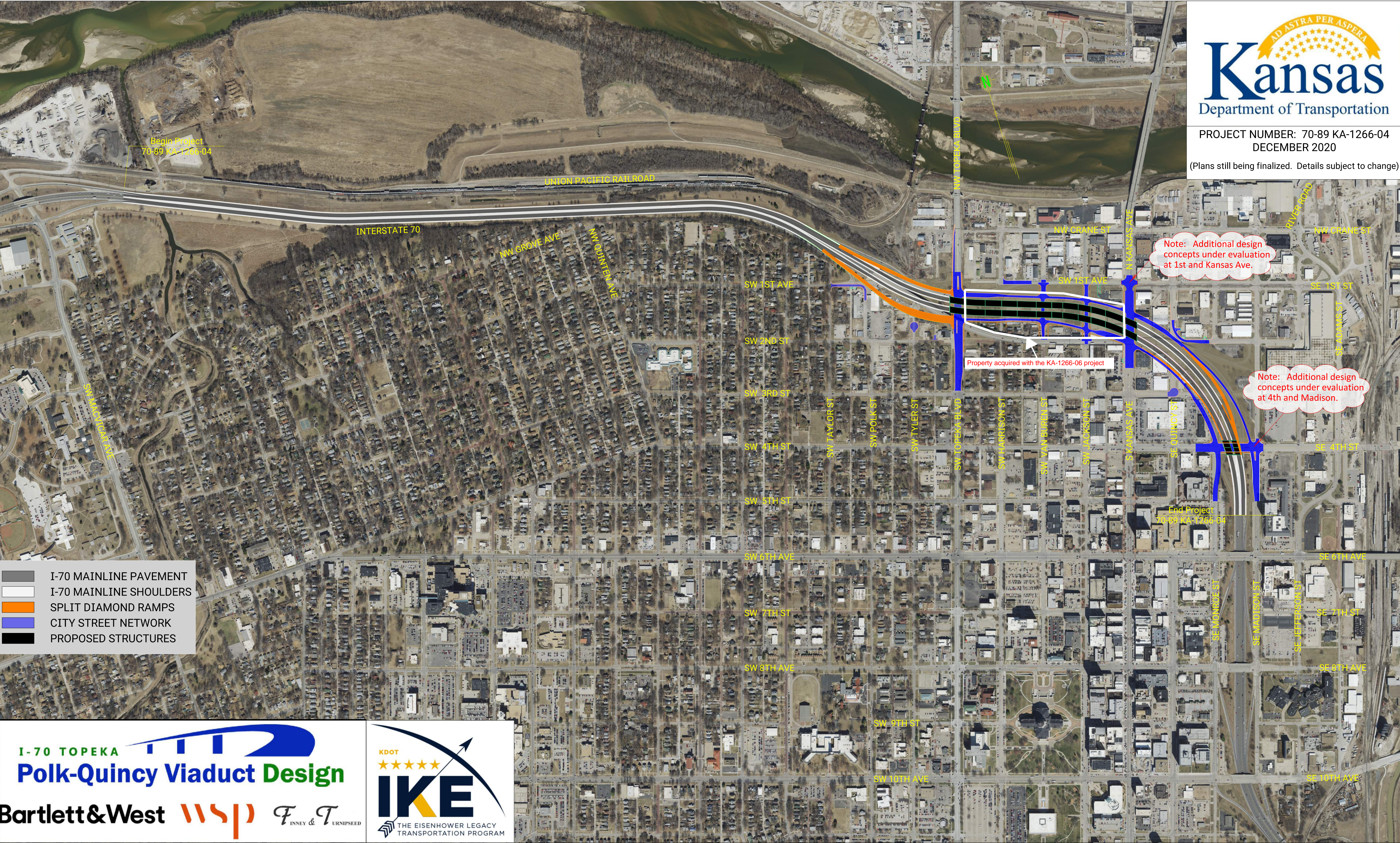
**REASON FOR CHANGE:** Cost increase of 85% (ROW phase increase) and change of scope for project location to end at Kansas Ave. instead of 4<sup>th</sup> Street. Project authorized for PE, ROW and UTIL work phases ONLY. Total project cost amount is for planning purposes ONLY.

Please attach a map showing the location of the project

### EXPENSE SUMMARY (x1000)

*Phase	Year of Obligation	Federal (\$)	State (\$)	AC?	Local(\$)	TOTAL COST (\$)	Federal Source	AC Conv. Yr.
PE	2021	\$ -	\$ 240.0	x	\$ -	\$ 240.0		
ROW	2021	\$ -	\$ 22,500.0	x	\$ -	\$ 22,500.0		
UTIL	2023	\$ -	\$ 100.0	x	\$ -	\$ 100.0		
PE		\$ 216.0	\$ (216.0)		\$ -	\$ -	NHPP	2025
ROW		\$ 20,250.0	\$ (20,250.0)		\$ -	\$ -	NHPP	2025
UTIL		\$ 90.0	\$ (90.0)		\$ -	\$ -	NHPP	2025
<b>TOTAL</b>		<b>\$ 20,556.0</b>	<b>\$ 2,284.0</b>		<b>\$ -</b>	<b>\$ 22,840.0</b>		

\*PE (Preliminary Engineering & Design); ROW (Right-of-Way Acquisition); UTIL (Utility Work); Const (Construction); or CE (Construction Engineering) Other



- I-70 MAINLINE PAVEMENT
- I-70 MAINLINE SHOULDERS
- SPLIT DIAMOND RAMPS
- CITY STREET NETWORK
- PROPOSED STRUCTURES



**METROPOLITAN TOPEKA  
PLANNING ORGANIZATION**  
620 SE MADISON | TOPEKA KS  
[www.topekamtpo.org](http://www.topekamtpo.org) | 785.368.3728

Transportation  
Improvement  
Program

**TIP**

## PROJECT DATA SHEET

### Administrative Modification

#### 2021-2024 TIP

TIP #:

KDOT#: TE-0494-01

**Project Type:**

Transportation Alternative

**Jurisdiction:**

City of Topeka

**Project:**

Topeka 10th Street Shared Use Path and Bridge

**Fiscal Year(s):**

2021

**Location:**

Topeka: North side of 10th Street from Wanamaker Rd to  
Robinson

**Total Project Cost:**

\$333,407

### PROJECT TYPES:

Transportation  
Alternative;  
Roadways & Bridges;  
Transit/Paratransit

**PROJECT Description and Justification:** Construct a 10ft concrete shared use path and bridge.

**REASON FOR CHANGE:** Revised let date and 4% increase in cost.

Please attach a map showing the location of the project

### EXPENSE SUMMARY (x1000)

*Phase	Year of Obligation	Federal (\$)	State (\$)	AC?	Local(\$)	TOTAL COST (\$)	Federal Source	AC Conv. Yr.
CONST	2021	\$ 243.4	\$ -		\$ 60.8	\$ 304.2		
CE	2021	\$ 2.4	\$ -		\$ 26.8	\$ 29.2		
<b>TOTAL</b>		<b>\$ 245.8</b>	<b>\$ -</b>		<b>\$ 87.6</b>	<b>\$ 333.4</b>		

\*PE (Preliminary Engineering & Design); ROW (Right-of-Way Acquisition); UTIL (Utility Work); Const (Construction); or CE (Construction Engineering) Other



**METROPOLITAN TOPEKA  
PLANNING ORGANIZATION**  
620 SE MADISON | TOPEKA KS  
[www.topekamtpo.org](http://www.topekamtpo.org) | 785.368.3728

Transportation  
Improvement  
Program

**TIP**

## PROJECT DATA SHEET

### Administrative Modification

#### 2021-2024 TIP

TIP #: 2-21-01-6

KDOT#: TE-0503-01

**Project Type:**

Transportation Alternative

**Jurisdiction:**

County

**Project:**

Topeka: West of I-470 from Deer Creek North Connection to  
29th St.

**Fiscal Year(s):**

2022

**Location:**

Topeka: Tyler St from Lyman Rd to Paramore St and  
Waddell St from Tyler St to Soldier Creek

**Total Project Cost:**

\$909,538

### PROJECT

#### TYPES:

Transportation  
Alternative;  
Roadways & Bridges;  
Transit/Paratransit

**PROJECT Description and Justification:** Construct 10' multi use concrete trail

**REASON FOR CHANGE:** 5% increase in cost.

Please attach a map showing the location of the project

### EXPENSE SUMMARY (x1000)

*Phase	Year of Obligation	Federal (\$)	State (\$)	AC?	Local(\$)	TOTAL COST (\$)	Federal Source	AC Conv. Yr.
PE		\$ -	\$ -		\$ -	\$ -		
ROW		\$ -	\$ -		\$ -	\$ -		
UTIL		\$ -	\$ -		\$ -	\$ -		
CONT	2022	\$ 632.7	\$ -		\$ 158.2	\$ 790.9	TA	
CE	2022	\$ 63.6	\$ -		\$ 55.1	\$ 118.7	TA	
<b>TOTAL</b>		<b>\$ 696.3</b>	<b>\$ -</b>		<b>\$ 213.3</b>	<b>\$ 909.6</b>		

\*PE (Preliminary Engineering & Design); ROW (Right-of-Way Acquisition); UTIL (Utility Work); Const  
(Construction); or CE (Construction Engineering) Other



**METROPOLITAN TOPEKA  
PLANNING ORGANIZATION**  
620 SE MADISON | TOPEKA KS  
[www.topekamtpo.org](http://www.topekamtpo.org) | 785.368.3728

Transportation  
Improvement  
Program

**TIP**

## PROJECT DATA SHEET

### Administrative Modification

#### 2021-2024 TIP

TIP #: 3-21-10-6

KDOT#: TE-0505-01

**Project Type:**

Transportation Alternative

**Jurisdiction:**

City of Topeka

**Project:**

Topeka: Bikeways Kansas Avenue Bridge

**Fiscal Year(s):**

2022

**Location:**

Topeka: Kansas Ave Bridge from 1st to Laurent St

**Total Project Cost:**

\$174,652

### PROJECT

#### TYPES:

Transportation  
Alternative;  
Roadways & Bridges;  
Transit/Paratransit

**PROJECT Description and Justification:** Reduce vehicle lanes and install separated 2-way bike lanes

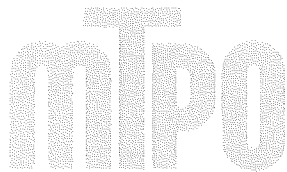
**REASON FOR CHANGE:** 4% increase in project cost. FFY change from 2021 to 2022.

Please attach a map showing the location of the project

### EXPENSE SUMMARY (x1000)

*Phase	Year of Obligation	Federal (\$)	State (\$)	AC?	Local(\$)	TOTAL COST (\$)	Federal Source	AC Conv. Yr.
CONT	2022	\$ 133.7	\$ -		\$ 34.2	\$ 167.9	TA	
CE	2022	\$ -	\$ -		\$ 6.7	\$ 6.7	TA	
<b>TOTAL</b>		<b>\$ 133.7</b>	<b>\$ -</b>		<b>\$ 40.9</b>	<b>\$ 174.6</b>		

\*PE (Preliminary Engineering & Design); ROW (Right-of-Way Acquisition); UTIL (Utility Work); Const (Construction); or CE (Construction Engineering) Other



**METROPOLITAN TOPEKA  
PLANNING ORGANIZATION**  
620 SE MADISON | TOPEKA KS  
[www.topekamtpo.org](http://www.topekamtpo.org) | 785.368.3728

Transportation  
Improvement  
Program

**TIP**

## PROJECT DATA SHEET

### Administrative Modification

#### 2021-2024 TIP

TIP #: 3-21-11-6

KDOT#: TE-0505-02

**Project Type:**

Transportation Alternative

**Jurisdiction:**

City of Topeka

**Project:**

Topeka: Bikeways Trail Connections

**Fiscal Year(s):**

2022

**Location:**

Topeka: 10 locations connecting to Landon, Shunga and  
North Levee Trails

**Total Project Cost:**

\$575,557

### PROJECT

#### TYPES:

Transportation  
Alternative;  
Roadways & Bridges;  
Transit/Paratransit

**PROJECT Description and Justification:** Construct 10' paths and separated bike lanes; install signage and sharrows.

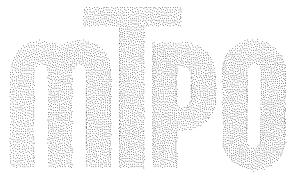
**REASON FOR CHANGE:** 5% increase in project cost. FFY change from 2021 to 2022.

Please attach a map showing the location of the project

### EXPENSE SUMMARY (x1000)

*Phase	Year of Obligation	Federal (\$)	State (\$)	AC?	Local(\$)	TOTAL COST (\$)	Federal Source	AC Conv. Yr.
CONT	2022	\$ 440.6	\$ -		\$ 112.7	\$ 553.3	TA	
CE	2022	\$ -	\$ -		\$ 22.3	\$ 22.3	TA	
<b>TOTAL</b>		<b>\$ 440.6</b>	<b>\$ -</b>		<b>\$ 135.0</b>	<b>\$ 575.6</b>		

\*PE (Preliminary Engineering & Design); ROW (Right-of-Way Acquisition); UTIL (Utility Work); Const (Construction); or CE (Construction Engineering) Other



**METROPOLITAN TOPEKA  
PLANNING ORGANIZATION**  
620 SE MADISON | TOPEKA KS  
[www.topekamtpo.org](http://www.topekamtpo.org) | 785.368.3728

Transportation  
Improvement  
Program

**TIP**

## PROJECT DATA SHEET

### Administrative Modification

#### 2021-2024 TIP

TIP #: 3-21-12-6

KDOT#: TE-0505-03

**Project Type:**

Transportation Alternative

**Jurisdiction:**

City of Topeka

**Project:**

Topeka: Bikeways North Topeka

**Fiscal Year(s):**

2022

**Location:**

Topeka: Tyler St from Paramore St to Lyman Rd and  
Waddell St from Tyler St to Soldier Creek

**Total Project Cost:**

\$762,291

### PROJECT

#### TYPES:

Transportation  
Alternative;  
Roadways & Bridges;  
Transit/Paratransit

**PROJECT Description and Justification:** Construct 10' paths and separated bike lanes; install signage and sharrows.

**REASON FOR CHANGE:** 5% increase in project cost. FFY change from 2021 to 2022.

Please attach a map showing the location of the project

### EXPENSE SUMMARY (x1000)

*Phase	Year of Obligation	Federal (\$)	State (\$)	AC?	Local(\$)	TOTAL COST (\$)	Federal Source	AC Conv. Yr.
CONT	2022	\$ 583.6	\$ -		\$ 146.5	\$ 730.1	TA	
CE	2022	\$ -	\$ -		\$ 32.2	\$ 32.2	TA	
<b>TOTAL</b>		<b>\$ 583.6</b>	<b>\$ -</b>		<b>\$ 178.7</b>	<b>\$ 762.3</b>		

\*PE (Preliminary Engineering & Design); ROW (Right-of-Way Acquisition); UTIL (Utility Work); Const (Construction); or CE (Construction Engineering) Other

