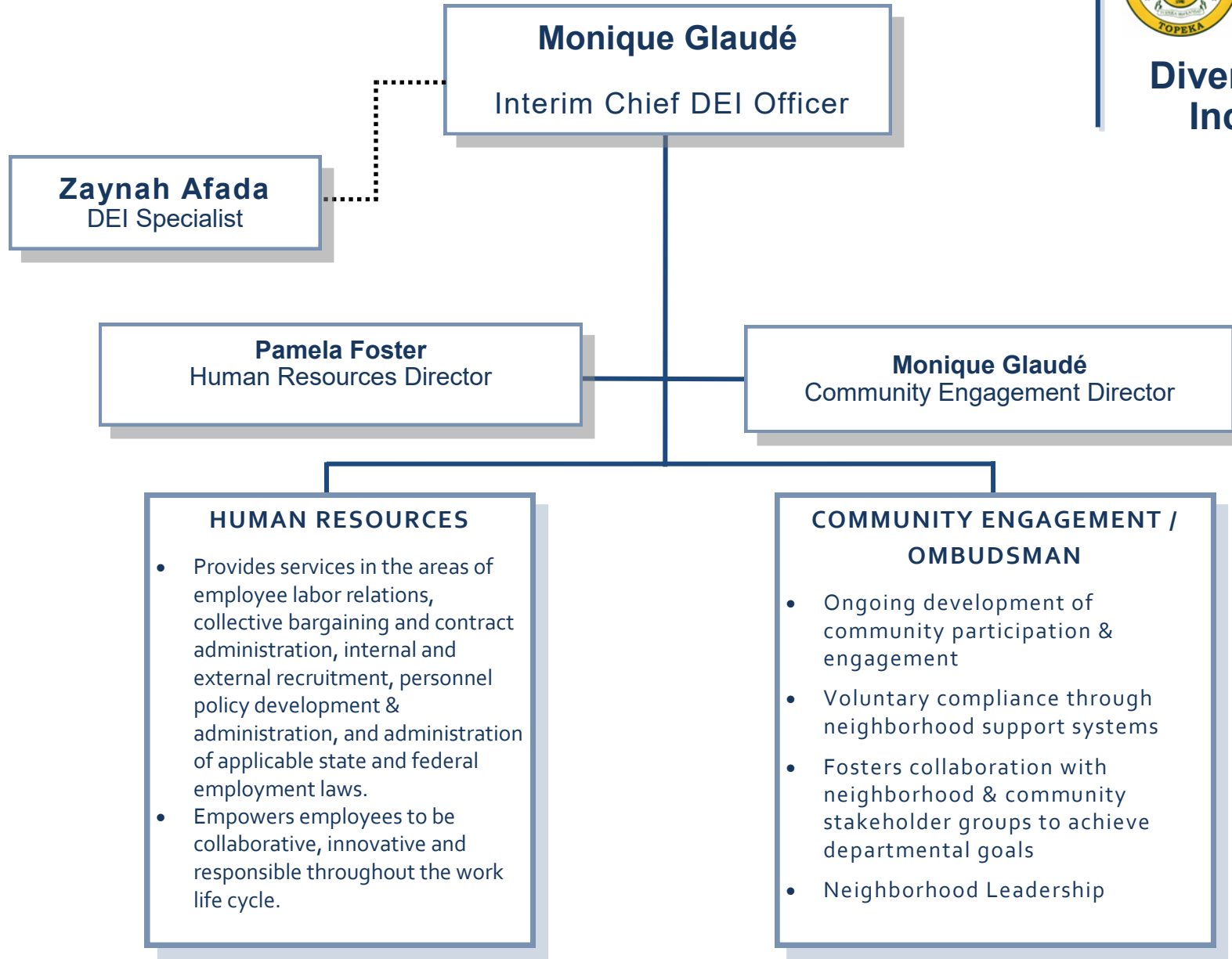




CITY
OF
TOPEKA

Diversity Equity and Inclusion Office



Diversity Equity and Inclusion Office

The Diversity Equity and Inclusion (DEI) Office is responsible for the development, implementation, and incorporation of proactive diversity, equity, and inclusion strategies throughout all aspects of the city. It is composed of offices of Human Resources and Community Engagement.