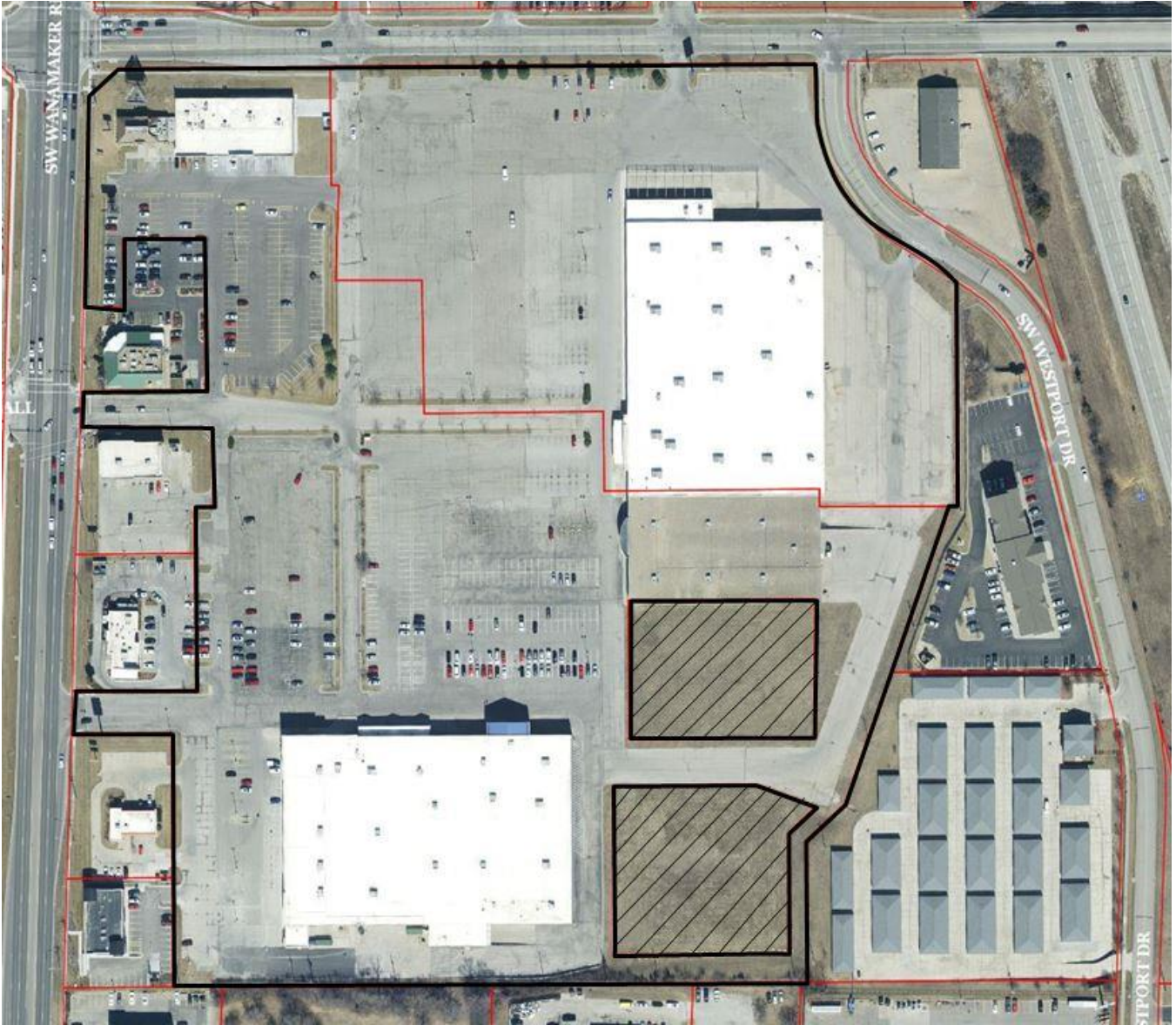


**WANAMAKER HILLS
COMMUNITY IMPROVEMENT
DISTRICT**



WANAMAHER HILLS
COMMUNITY IMPROVEMENT
DISTRICT
LEGAL DESCRIPTION OF CID

TRACT I:

Lot 1, Block A, TOPEKA CROSSING SUBDIVISION NO. 2 in the City of Topeka, Shawnee County, Kansas.

TRACT II:

Lot 3, Block A, TOPEKA CROSSING SUBDIVISION NO. 2 in the City of Topeka, Shawnee County, Kansas.

TRACT III:

Lot 3, Block A, TOPEKA CROSSING SUBDIVISION NO. 2 in the City of Topeka, Shawnee County, Kansas, with the following exceptions:

EXCEPT Commencing at the Southwest corner of said Lot 3; thence on a bearing of North 01 degree 59 minutes 10 seconds West, along the West line of said Lot 3, a distance of 40.00 feet to the POINT OF BEGINNING; thence continuing on a bearing of North 01 degree 59 minutes 10 seconds West, along the West line of said Lot 3, a distance of 234.45 feet; thence on a bearing of North 88 degrees 00 minutes 50 seconds East, a distance of 199.21 feet; thence on a bearing of South 72 degrees 07 minutes 16 seconds East, a distance of 89.19 feet; thence on a bearing of South 45 degrees 16 minutes 47 seconds West, a distance of 52.75 feet; thence on a bearing of South 01 degree 59 minutes 10 seconds East, a distance of 168.35 feet; thence on a bearing of South 88 degrees 00 minutes 50 seconds West, a distance of 244.35 feet to the point of beginning,
AND ALSO EXCEPT Commencing at the Southwest corner of said Lot 3; thence on a bearing of North 01 degree 59 minutes 10 seconds West, along the West line of said Lot 3, a distance of 340.45 feet; thence on a bearing of North 88 degrees 00 minutes 50 seconds East, a distance of 20.82 feet to the POINT OF BEGINNING; thence on a bearing of North 01 degree 59 minutes 10 seconds West, a distance of 192.31 feet; thence on a bearing of North 88 degrees 00 minutes 50 seconds East, a distance of 260.00 feet to the point of beginning.

TRACT IV:

Lot 1, Block A, TOPEKA CROSSING SUBDIVISION in the City of Topeka, Shawnee County, Kansas.

TRACT V: The East 8.59 feet of the North 211.66 feet of Lot 2 and the South 26 feet of said Lot 2 and the North 26 feet of Lot 3, Block A, TOPEKA CROSSING SUBDIVISION in the City of Topeka, Shawnee County, Kansas.

TRACT VI:

Non-Exclusive Easements for the passage (including ingress/egress to public streets) and parking of vehicles and for the passage and accommodation of pedestrians over and across the Common Area (as defined in said instrument), including the parking, driveways, roadways and sidewalk areas as created in the Declaration of Covenants, Conditions, Restrictions and Reciprocal Easements recorded December 3, 1992, in Book 2767, Page 792, subject, however, to the terms and provisions thereof.