

Community Needs:

A Community and
Data Perspective

What This Is:

- A snapshot of data collected from the community at two points in the last 12 months
- Responses based on a prescribed set of questions and prompts
- An opportunity to learn from our community
- A conversation starter

What This Is Not:

- A complete picture of our community and its perceptions of assets and needs
- A scientific study
- A series of recommendations for action

Community Health Needs Assessment (CHNA)

2021 Community Health Needs Assessment

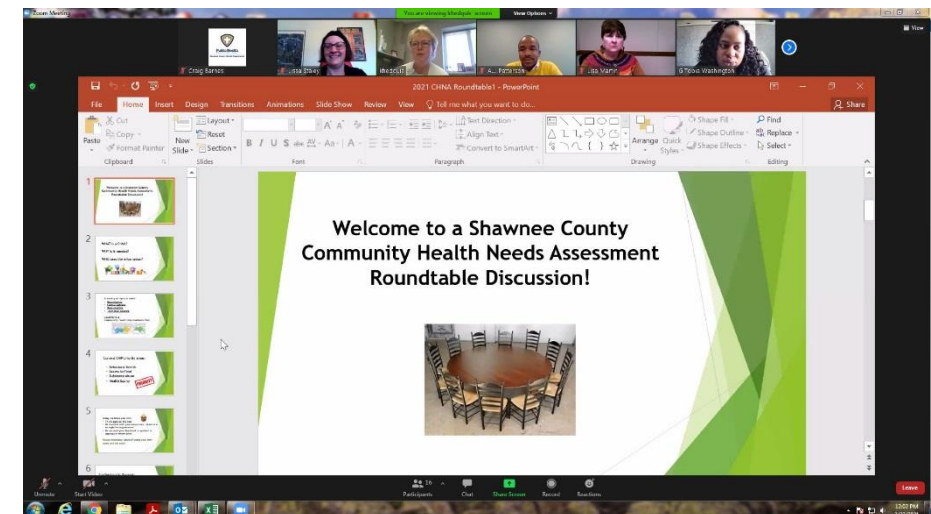


CHNA Purpose

- To understand and document current and future community health needs
- To determine social, economic, and environmental challenges to reaching optimal community health
- To meet regulatory standards for a non-profit health system and accreditation for Shawnee County Health Department
- Informed development of the Community Health Improvement Plan to assist in justifying the allocation of resources to best meet the identified needs

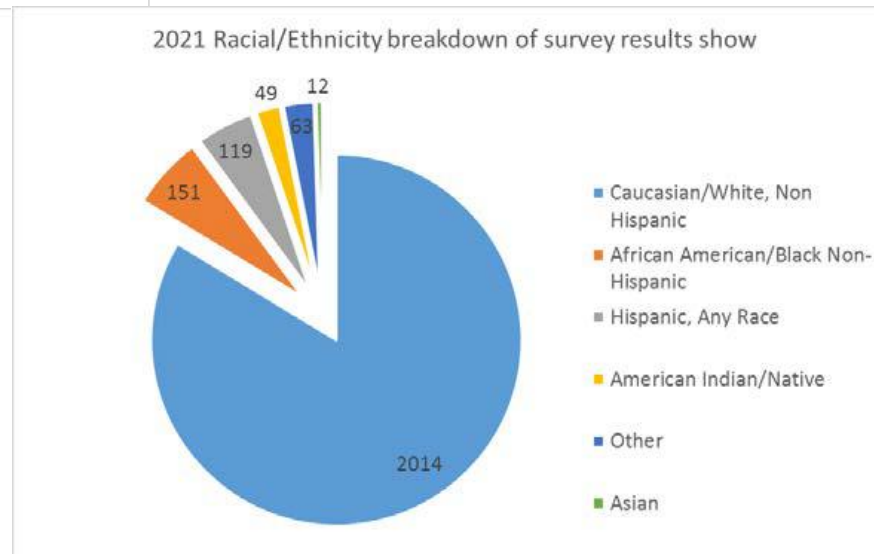
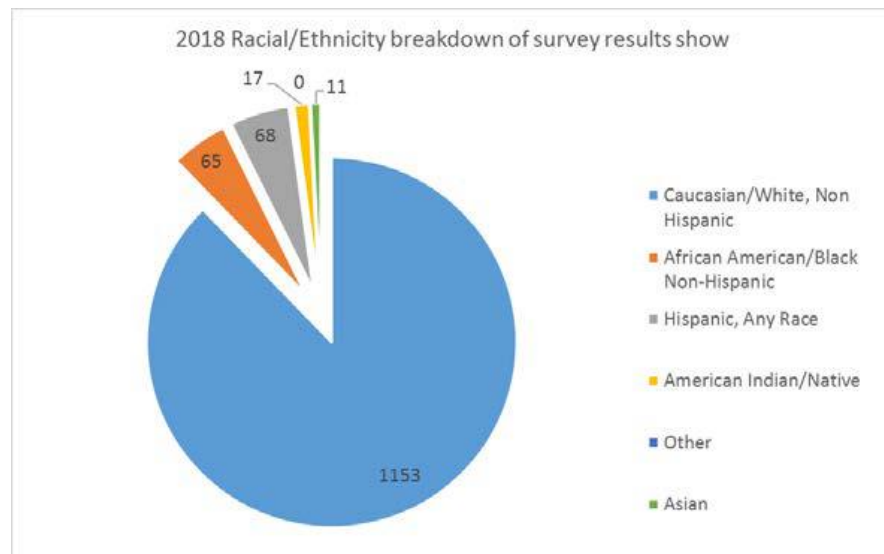
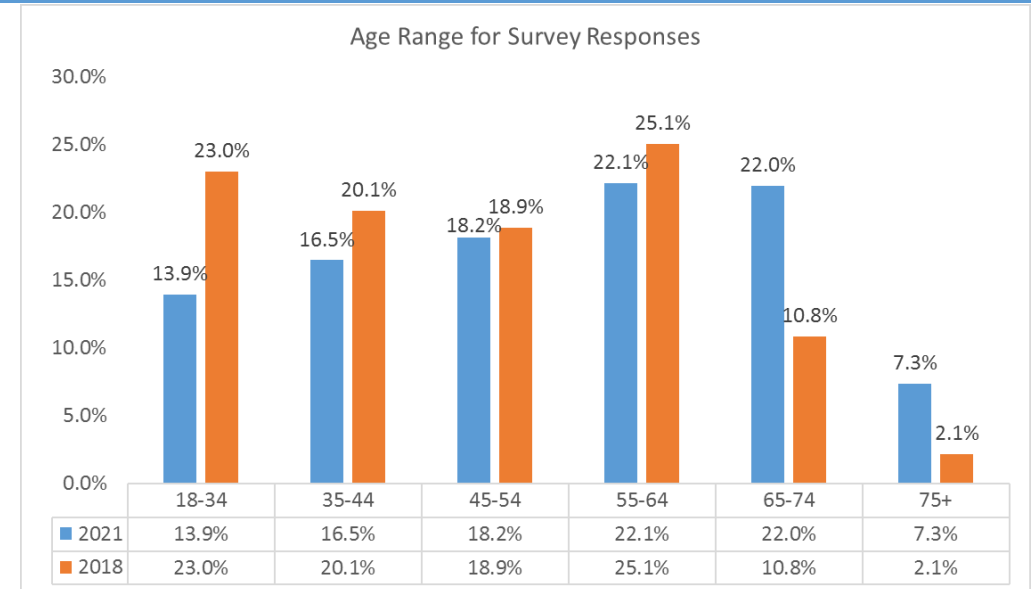
2021 Community Primary Feedback

- Community Perception Survey:
2,536 responses
- 15 Targeted Roundtables:
148 attendees
- Virtual Town Hall Community
Conversation
95 attendees (45 organizations)

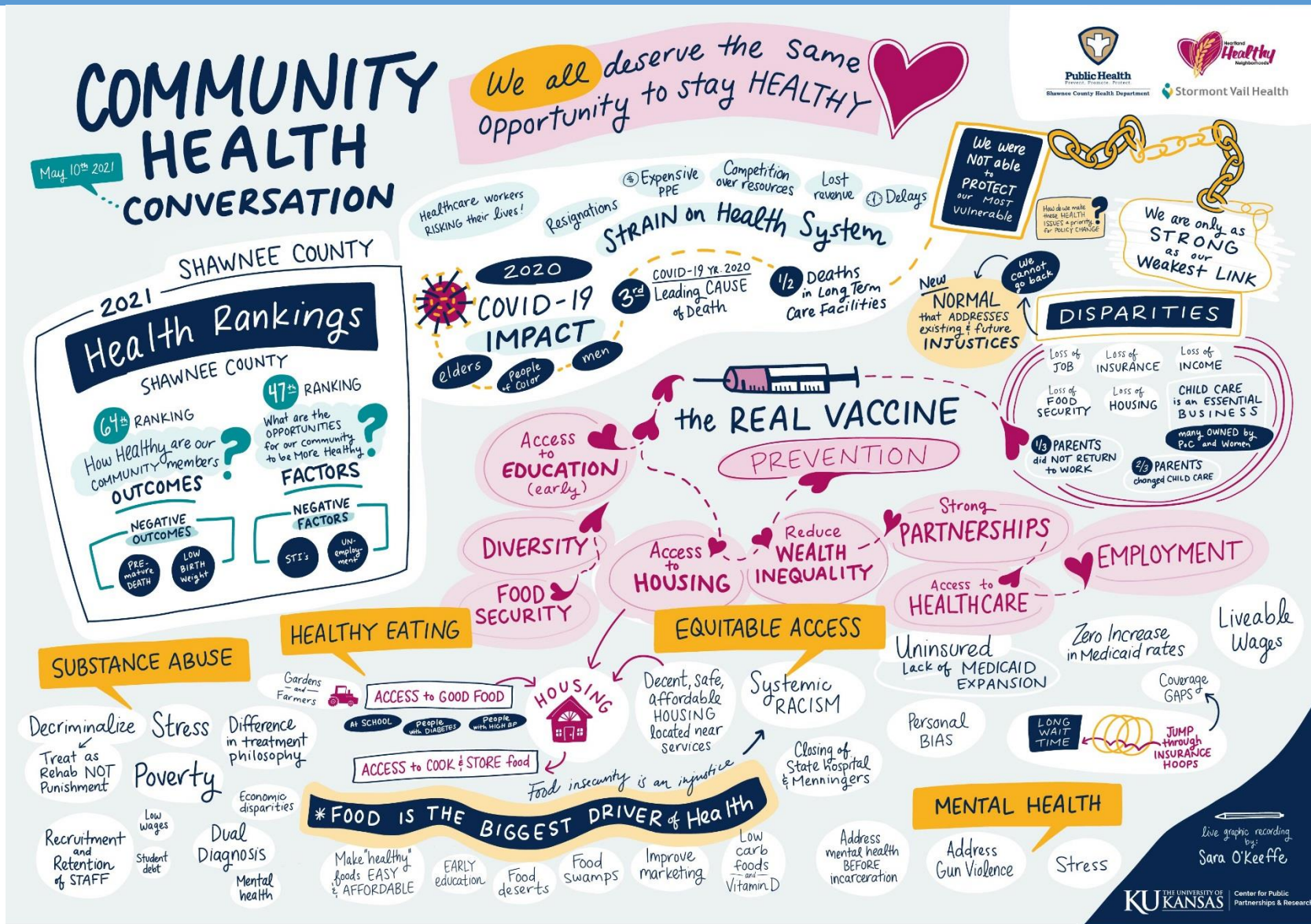


Community Survey Participation

- 2021 showed a more even distribution of respondents across all ages
- 2021 saw an increase in participation from non-Caucasian groups.
- Still work to do to accurately represent the demographic breakdowns in SNCO



Graphic recording of Community Conversation



Then - 2018 Assessment (Primary Data)

| Shawnee Co CHNA Wave #3 | | (A) Ongoing Problem | (B) Pressing Now |
|----------------------------------|-----------------------------------|-----------------------------|-----------------------------|
| Evaluate Past CHNAs health needs | | Shawnee Co Online N=2324 | Shawnee Co Online N=2324 |
| # | Topic | Votes % | RANK |
| 1 | Mental Health Access | 10.3% | 1 |
| 2 | Affordable HC Insurance | 9.7% | 2 |
| 3 | Poverty | 9.3% | 4 |
| 4 | Drug / Substance Abuse | 9.3% | 3 |
| 5 | Obesity | 9.2% | 5 |
| 6 | Substance Abuse | 7.5% | 7 |
| 7 | Alcohol Abuse | 6.2% | 12 |
| 8 | Wellness / Prevention | 5.9% | 9 |
| 9 | Awareness of existing HC services | 5.4% | 10 |
| 10 | Primary Care Access | 5.3% | 6 |
| 11 | Chronic Health | 5.3% | 8 |
| 12 | Nutrition - Healthy Food options | 5.3% | 11 |
| 13 | Fitness / Exercise options | 4.3% | 14 |
| 14 | Personal Health Management | 3.8% | 13 |
| 15 | Teenage Pregnancy | 3.2% | 15 |

Priority Areas in last CHIP:

- Mental Health
- Safe Access to Food
- Substance Use
- Health Equity

2020-2022 Community Health Improvement Plan

- Strategies developed around the 4 priority areas:
 - Behavioral Health
 - Access to Food
 - Substance Use
 - Health Equity
- Work is still ongoing
- Things to celebrate



NOW - 2021 Assessment (Primary Data)

Biggest
Opportunity

concern for our
community,
highest to lowest



| Answer Choices | % of total | Issue Rank |
|--|------------|------------|
| Affordable health care insurance | 57.05% | 1 |
| Mental health access | 50.00% | 2 |
| Poverty | 25.59% | 3 |
| Obesity | 18.07% | 4 |
| Drug/substance abuse | 18.15% | 5 |
| Awareness of existing health care services | 19.41% | 6 |
| Primary care access | 22.50% | 7 |
| Wellness/prevention | 19.73% | 8 |
| Nutrition/healthy food options | 15.69% | 9 |
| Substance abuse | 7.05% | 10 |
| Chronic health | 13.23% | 11 |
| Alcohol abuse | 4.08% | 12 |
| Fitness/exercise options | 13.00% | 13 |
| Personal health management | 14.46% | 14 |
| Teenage pregnancy | 1.98% | 15 |

2021- What is the biggest opportunity for improvement in our community?

NOW - 2021 Assessment (Prioritization)

>30% >5% >10%

| Issue | Very big problem | No services | Quality unacceptable |
|---|------------------|-------------|----------------------|
| Access to primary health care | 32.56% | 2.19% | 8.20% |
| Alcohol/ illegal drug abuse | 55.94% | 5.05% | 11.05% |
| Arthritis, joint/back pain | 18.62% | 4.28% | 3.88% |
| Cancer | 28.93% | 3.10% | 2.73% |
| Diabetes | 47.66% | 2.58% | 3.33% |
| Heart disease/stroke | 38.36% | 2.54% | 2.65% |
| Infant immunizations | 7.31% | 2.96% | 2.22% |
| Infant death | 6.03% | 3.94% | 2.70% |
| Knowledge of available health care services | 31.38% | 4.85% | 10.13% |
| Lack of exercise | 50.38% | 6.18% | 8.67% |
| Lung, asthma or other respiratory illness | 23.48% | 2.63% | 3.10% |
| Mental health issues | 67.36% | 6.60% | 25.12% |
| Not eating healthy | 55.86% | 8.15% | 11.38% |
| Prescription drug abuse/dependence | 37.65% | 5.34% | 12.18% |
| Oral, dental health | 27.99% | 5.14% | 7.96% |
| Overweight/obesity | 60.25% | 6.00% | 10.05% |
| Teen pregnancy | 11.40% | 5.39% | 4.61% |
| Tobacco use | 31.91% | 7.23% | 6.32% |
| Transportation to health care services | 29.99% | 8.71% | 11.95% |
| Violence | 52.25% | 10.93% | 21.67% |

4 Major Area of Work:

- 1.) Mental Health
- 2.) Healthy Eating and Obesity
- 3.) Substance Abuse
- 4.) Equitable Access

United Way Stakeholder Meetings

Purpose:

- Listen to the community and prioritize areas for investment
- Use community data to develop next evolution of UWGT

United Way Stakeholder Meetings

Convenings

- COVID-19 Response and Coordination Group
- THA Residents
- Community at Large
- Spanish-speaking Residents (hosted by El Centro)

United Way Stakeholder Meetings

Themes

- Basic Needs
 - Food Security
 - Housing Supports
 - Healthcare/Rx Assistance
 - Safety

United Way Stakeholder Meetings

Themes

- Health
 - Mental Health Services
 - Addiction/Substance Use
 - All Ages
 - Health Insurance

United Way Stakeholder Meetings

Themes

Education

- Early Education and School Readiness
- K-12 Supports
- Education Needs for Adults

United Way Stakeholder Meetings

Themes

- Language Barriers
 - Need for more services and information in Spanish
- Safety
 - Neighborhoods
- Community Development
- Aging Population
 - Increasing numbers of unsheltered older individuals

Shared Themes and Issues

- Mental Health (all ages)
- Addiction/Substance Use
- Health
 - Access to healthcare
 - Affordable healthcare
- Equitable Access to Services (language, transportation, poverty, etc.)