

# Police and Community

COMMITTEE

# Police and Community

## Civilian Boards and Community Partnerships

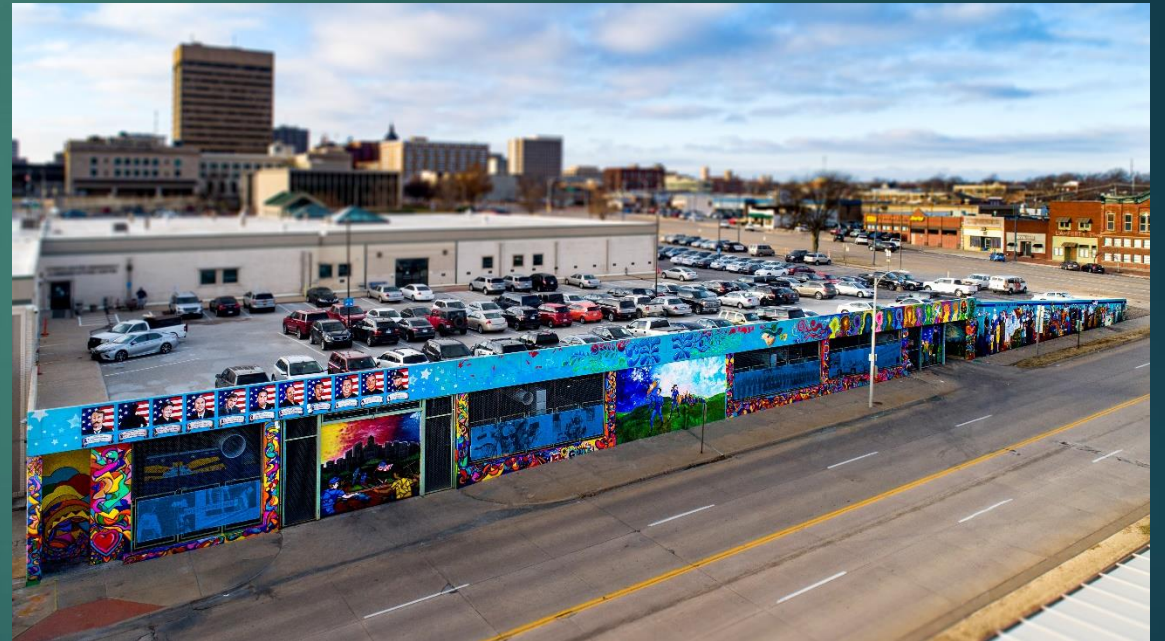
- Juvenile Corrections Advisory Board
- 2022 East Topeka Momentum Committee
- Club Blue / Boys and Girls Club of Topeka
- Visit Topeka Board of Directors
- Mayor's Task Force on Domestic Violence
- Entrepreneurial & Minority Development
- Momentum 2022 Economic Development



# Police and Community

## Civilian Boards and Community Partnerships

- Small Business Council
- Shawnee County Crime Stoppers
- ARTSConnect
- Law and Public Safety Pathway / USD 501
- Topeka Police Explorers Advisor Board
- Topeka Police Explorers Post Fund
- OK Program



# Police and Community

## Civilian Boards and Community Partnerships

- Topeka Center for Advanced Learning and Careers Law and Public Safety Pathway Advisor Board
- Topeka Community Foundation Board of Directors
- SENT Summer Camp
- Youth Outreach Program Board of Directors
- Third Judicial District Drug Treatment Court
- KS COPS Law Enforcement Liaison
- Harvesters Community Advisory Council



# Police and Community

## Civilian Boards and Community Partnerships

- Topeka Youth Project
- National Tactical Officers Association
- Heartland Tactical Officers Association
- Valeo Board of Directors
- Valeo Community Residence Program (CRP) Board
- Shawnee County Crisis Intervention Teams (CIT) Council
- Service Members, Veterans and their Families (SMVF) Subcommittee



# Police and Community

## Civilian Boards and Community Partnerships

- Kansas Citizen's Committee (KCC) Subcommittee
- Shawnee County Homeless Task Force
- Capital City Homeless Outreach
- Police Athletic League Board of Directors
- Family Service and Guidance Center Board of Directors
- SNCO Suicide Prevention Coalition Board of Directors
- Advisory Board for Topeka Center for Advanced Learning and Careers



# Police and Community

## Civilian Boards and Community Partnerships

- Community Corrections Advisory Board
- Kansas Internal Affairs Investigators Association
- Restorative Justice and Youth Committee
- MANA de TOPEKA
- Strengthening Police and Community Partnership (SPCP)
- Ronald McDonald House Charities of NEK
- Strategic Leadership Academy Community Relations Task Force



# Police and Community

## Civilian Boards and Community Partnerships

- Leadership Greater Topeka
- Topeka's Top 20 Under 40 – Jayhawk Area Council
- Strategic Leadership Academy
- City of Topeka – Above and Beyond Award Committee
- TCALC Advisory Board for Law and Public Safety Pathway USD 501
- Washburn University Leadership Studies Mentor
- Washburn University Adjunct Professor





# Police and Community

## Civilian Boards and Community Partnerships

- Jewish Temple Beth Shalom Security Council Member
- Greater Topeka Public Safety Foundation
- Salvation Army Board
- What Works City Planning Committee
- NE Kansas Regional Council Board
- Boys and Girls Club of Topeka Board – VP
- Shawnee County Consolidated Emergency Communication Technology Working Group



# Police and Community

## Civilian Boards and Community Partnerships

- Shawnee County Department of Corrections Community Information Board
- Freedom Now Board – Topeka Rescue Mission
- Red Cross Capital Chapter Board of Directors
- Downtown Topeka Inc
- Community Action
- S.A.V.E. (Strategies Against Violence Everywhere)
- Fiesta Mexicana Committee



# Police and Community

## Civilian Boards and Community Partnerships

- Topeka Center for Peace and Justice Executive Board
- Crossover Youth Intervention Team
- Shawnee County Human Trafficking Coalition
- Maternal Mortality Review Board / State of Kansas
- Kansas Strong / Family First Advisory Council
- Attorney General Law Enforcement Advisory Board and Human Trafficking



# Specialty Units

## Full Time

- Canine
- School Resource
- Behavioral Health
- Motorcycles
- Community Police
- Task Force Officer
- Narcotics
- Court Services
- Technology Unit

## Collateral Duty

- Response Team
- Bomb Squad
- ATV
- Accident Reconstruction
- Crisis Negotiators
- Honor Guard
- Security Preservation Team

# Specialty Units

## Application Process

- 7 Day posting of the job opening
- Applicant submits a memo of interest through the chain of command
  - \*This can include an attached resume and letters of recommendation
- Applicant eligibility includes a minimum term of continuous service
  - \*successful completion of probationary period (18 Months)
  - \*24 months of continuous service

# Specialty Units

## Selection Process

The following positions at all ranks are designated for selection by the Chief at his or her sole discretion.

- Assistant Director of Training
- Armor/Range Master
- Professional Standards
- Field Training Supervisors
- Narcotics Unit Officers
- Training Academy Officer
- ATV Assignments
- Field Training Officers
- Field Training Detectives

# Specialty Units

## Selection Process

All officers who may be interested in a specialty position other than one designated for selection by the Chief must apply for Management Council consideration within the required seven day posting period.

- Management Council consists of three administrators and the supervisor of the specialty unit or position.
- A labor council member will attend as an observer.
- The Management Council rate all applicants on a list based on six qualifications: training, experience, education, performance, seniority and ability.

# Specialty Units

## Selection Process

The list compiled by the Management Council shall be provided to the Chief and the Chief shall fill job vacancies from the top four candidates on the list.



# Specialty Units

## Training

### K-9 Unit

- 10 Week Kansas Highway Patrol Service Dog Program
- Minimum of 17 hours a month of formal training
- On-shift training occurs daily
- Certification of skills occurs annually
  - \*Utah Post Program
  - \*Nationally recognized PSD certification program
- 7 Patrol Dogs / 2 Explosive Detection Dogs

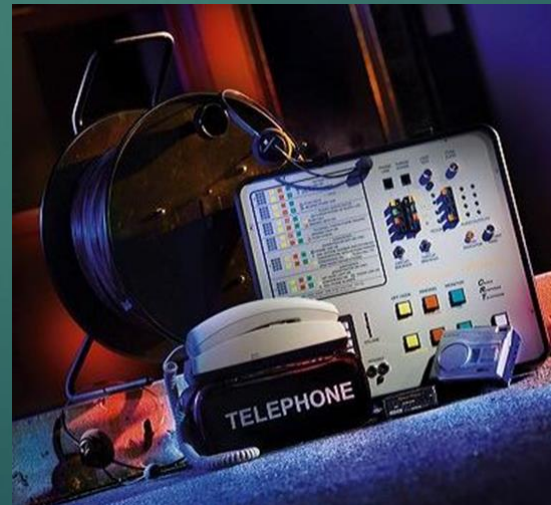


# Specialty Units

## Training

### Crisis Negotiation Team

- Public Agency Training Council Crisis Negotiation Phase 1 and 2.
  - \*40 Hour certification course
- Phase 3
  - \*40 Hour certification course
  - \*24 Hour annual recertification
- Quarterly 8 hour training



# Specialty Units

## Training

### Behavioral Health Unit

- Basic Crisis Intervention Training  
\*40 Hour Course
- Advanced Crisis Intervention Training  
\*24 Hour Course
- Annual CIT Refresher Course
- Applied Suicide Intervention Skills Training  
\*16 Hour Course

