



T O P E K A
PEDESTRIAN
M A S T E R P L A N

BACKGROUND

Topeka's Pedestrian Master Plan was initiated in 2015 and formally adopted in 2016 by the MTPO and Governing Body

- 60.9 miles
 - 25.5 miles NEW
 - 16 miles REPAIRED
 - 19.4 miles STREET Projects (CIP/Sales Tax)
- Sidewalk Build-Out Goal (total coverage both sides of street)
 - All Streets => 48% to 51%
 - Arterials => 69% to 79%

CIP increased funding for implementation from \$100,000 to \$600,000 annually starting in 2016

- 10 year need = \$21 million in highest demand areas
- 10 year funding = \$6 million (CIP) + \$6 million (Other funds - TA, SRTS, SORT, ADA, etc..)
- \$9 million shortfall (minimum)

BACKGROUND

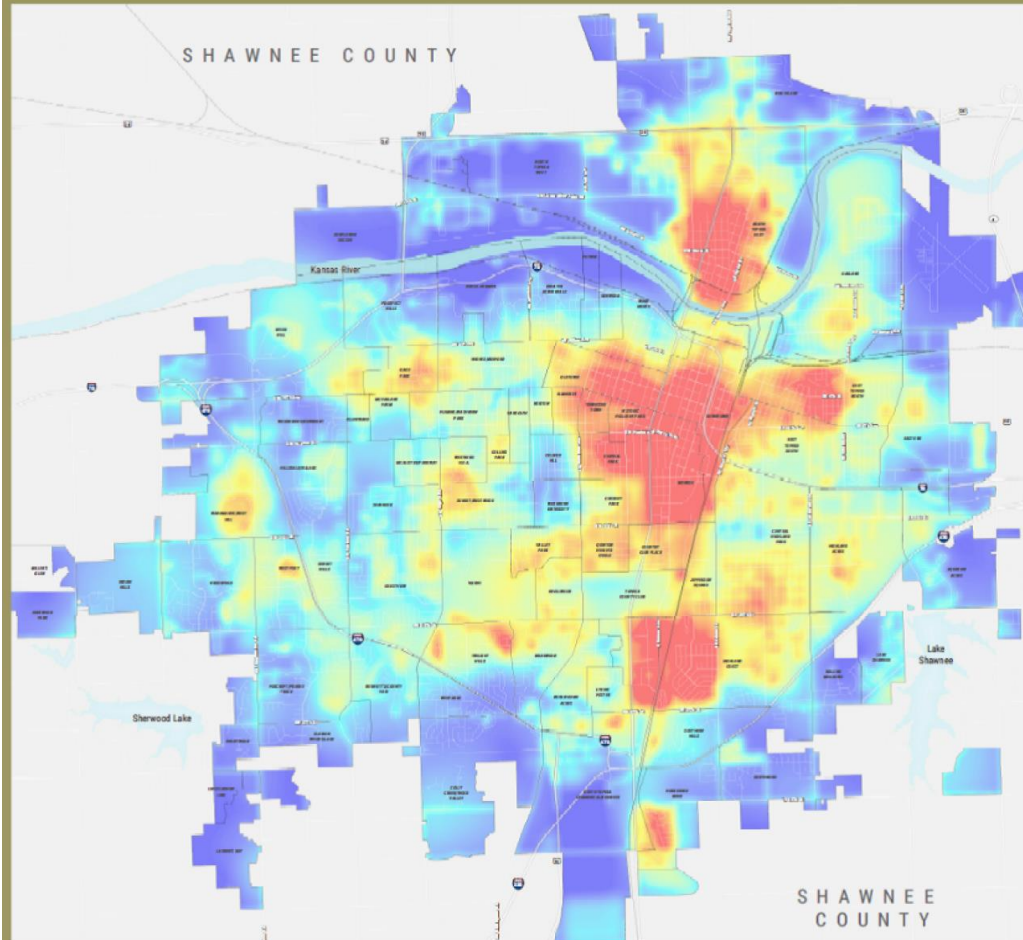
VISION

- *"Topeka is a walkable city where people of all ages and abilities can safely and comfortably travel on foot"*

GOALS

- **A Complete Pedestrian Network**
 - Prioritize sidewalks to schools, bus routes, community centers, senior centers, and park/trails, and ensure that Topeka's neighborhoods are connected.
- **Maintained Sidewalks**
 - Repair existing sidewalks and maintain new sidewalks so that they are safe for travel at all times.
- **Safety and Comfort**
 - Improve sidewalks and intersections with infrastructure that will keep pedestrians safe and comfortable.
- **A Culture of Walking**
 - Make walking a normal part of everyday life.
- **Priority Projects**
 - Focus resources on neighborhoods where the demand for walking is highest.

Highest Demand



HIGH WEIGHT:

BUS ROUTES

INTENSIVE CARE AREAS

PARKS AND TRAILS

SCHOOLS

STREETS W/O SIDEWALK

LOWER WEIGHT:

BUSY STREETS

COMMERCIAL PARCELS

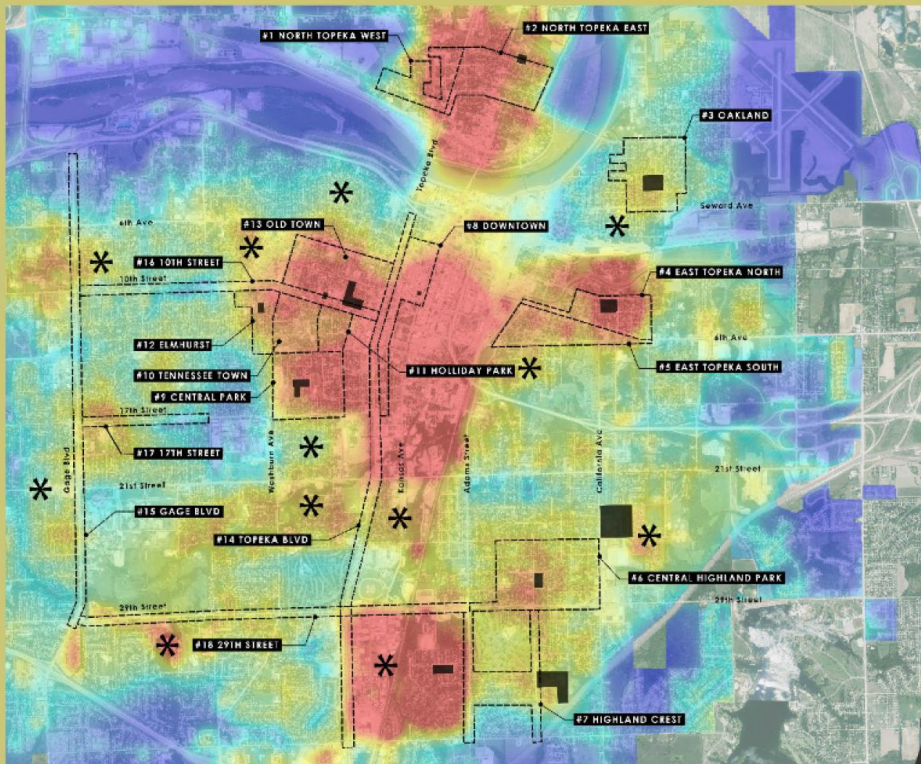
COMMUNITY/SR CENTERS



HIGH DENSITY RESIDENTIAL

MAJOR DESTINATIONS

AT RISK NEIGHBORHOODS

FOCUS AREAS



- Inventoried 70 miles
 - 13 Neighborhoods
 - 5 Corridors
- Focus Areas (18)
 - High Demand w/ Schools
 - High Demand
 - Lower Demand w/ Schools
 - Lower Demand
- Corridors/Complete Street Links 
- Future Focus Areas 

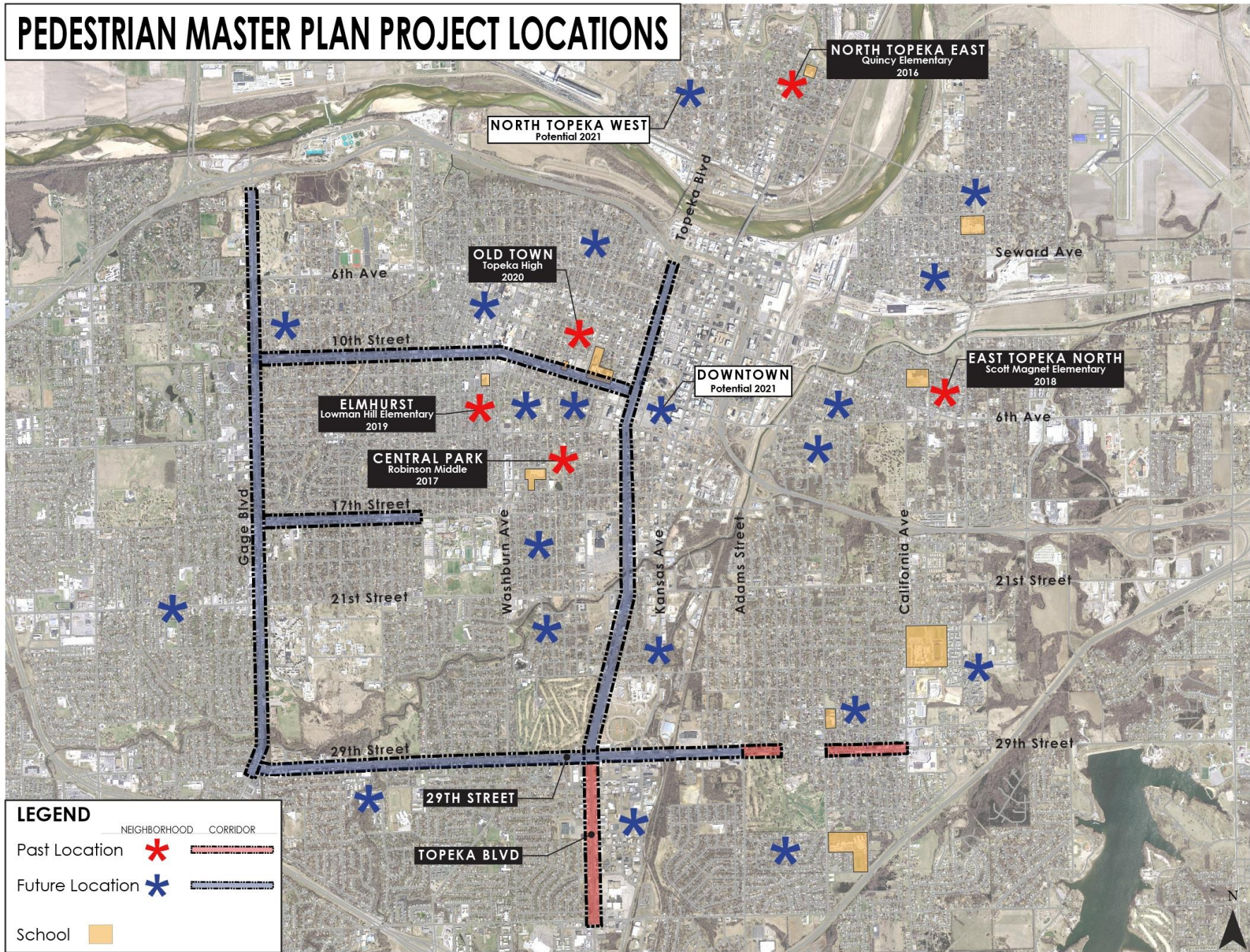
Priority Improvement Locations

Based on levels of pedestrian demand, proximity of schools, corridors and complete streets linkages plus magnitude of needed improvements and anticipated funding (see page 165 for assumptions), the top ranked improvement locations include those shown in Table 4 below. Appendix I-A (pg. 165-196) includes detailed project and cost estimate information and locational map by neighborhood. Appendix I-B (pg. 197-198) lists the inventory questions.

Table 4 – Priorities	
GROUP A - High Areas of Pedestrian Demand WITH Schools	
Area	Priority Years*
North Topeka East (Quincy)	2016-2020
Central Park (Robinson)	2017-2020
East Topeka North (Scott Magnet)	2018-2020
Elmhurst (Lowman Hill)	2019-2020
Old Town (Topeka High)	2019-2020
GROUP B - High Areas of Pedestrian Demand WITHOUT Schools	
Area	Priority Years*
→ North Topeka West	2021-2022
→ Downtown	2021-2022
Historic Holliday Park	2022-2023
Tennessee Town	2022-2023
GROUP C - Lower Areas of Pedestrian Demand WITH Schools	
Area	Priority Years*
Central Highland Park (Highland Park Central)	2023-2024
Oakland (State Street / Chase)	2023-2024
Highland Crest (Eisenhower/ Ross)	2024-2025
GROUP D - Lower Areas of Pedestrian Demand WITHOUT Schools	
Area	Priority Years*
East Topeka South	2024-2025
GROUP E - Corridors/ Complete Street Linkages/ Future Areas	
Area	Priority Years*
→ 29 th Street	2016 - 2025
→ Topeka Boulevard	2016 - 2025
Gage Boulevard	2016 - 2025
SW 10 th Street	2016 - 2025
SW 17 th Street	2016 - 2025
→ Jardine MS/ES	2016 - 2025
Other/Future Areas	2016 - 2025

*Impacted by funding availability

PEDESTRIAN MASTER PLAN PROJECT LOCATIONS



BEFORE- 29th and Adams



AFTER- 29th and Adams



PROCESS

4th QUARTER

- Typically, a neighborhood and a street corridor is selected based on the Pedestrian Plan
- Planning will affirm the neighborhood and street corridor with the Complete Streets Advisory Committee (CSAC)
- Planning will send neighborhood boundary and street corridor to engineering so they can write up RFP and use this boundary for ADA project
- ADA project is a separate project with its own contractors and timelines
- Planning will set up and attend a neighborhood meeting to introduce the project
 - Get initial input and feedback from neighborhood

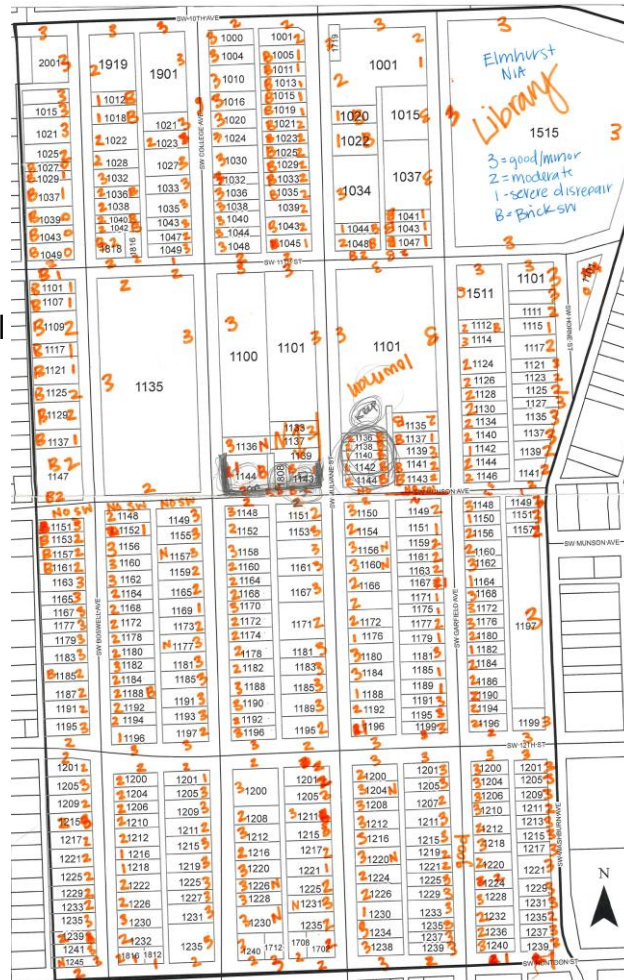
...PROCESS (CONT.)

1st/2nd QUARTER

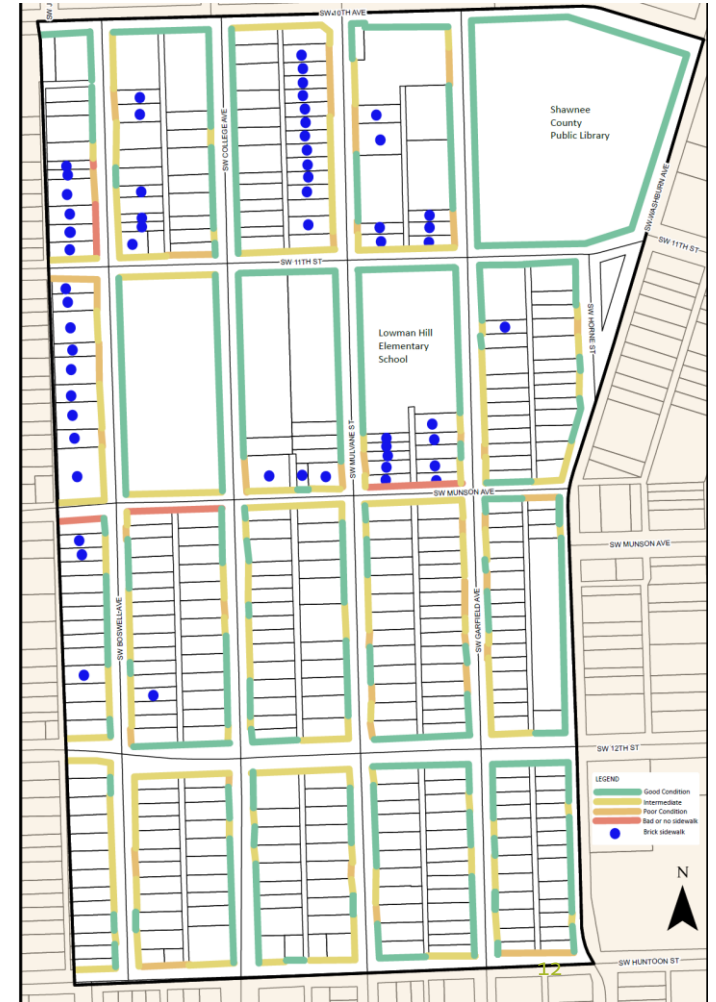
- Planning conducts an inventory of the neighborhood and creates a conditions map
 - Planning schedules and attends a neighborhood meeting and a CSAC meeting to discuss conditions map and identify priority areas
 - Consultants are hired and conduct their own condition and feasibility analysis
 - Consultants will draft up preliminary designs –taking into account previous input and cost estimates
 - Planning and consultants will schedule and attend a neighborhood meeting to discuss draft plans and will identify priority areas
 - Contractors are hired and will complete as much of the plan that funds can cover
- **The following is an example from the 2019 project in Elmhurst:*

ELMHURST-Planning Analysis

-Walk neighborhood noting conditions



-Create condition map



-Identify Safe Routes To School



CONSULTANTS

- Do their own condition and feasibility analysis and draft up preliminary locations for new sidewalks
- Planning will relay any issues from homeowners to consultant so they can make alterations or accommodations within design



Steps to be removed or reconfigured with project

1148 SW Boswell –



Fence within Right-of-Way to be removed with Project

1144 SW Mulvane –



- Once the consultants have created a preliminary draft the city sets up an informational meeting to present draft design
- The card to the right was placed on all doors within the neighborhood

Title: Sidewalk Replacement Program-Elmhurst Neighborhood

A contractor for the City of Topeka will remove and replace concrete sidewalks near your home beginning this summer of 2019. We will be having an Elmhurst informational meeting on **May 8th @ 6:30pm at the Topeka & Shawnee County Public Library (1515 SW 10th Ave)**. A preliminary plan will be available for viewing at the meeting.

Things to know:

- All sidewalk work needing replacement will be reconstructed in concrete, including brick sidewalk replacements.
- Possibility of some tree removal in the right of way may be required.
- Consultant for the project: Schmidt Beck and Boyd Engineers, Project Engineer Brian Austin, 215-8630
- City of Topeka Project Engineer Mark Schreiner at 368-3842 or Taylor Ricketts (tricketts@topeka.org), Planner, at 368-1607.

This project is part of the citywide Pedestrian/Infill Sidewalk Program.

NON-EMERGENCY UTILITY OWNER CONTACTS

Cable TV
Cox Communications 931
SW Henderson Rd.
Topeka, KS 66615
Glen Calhoon
(785)207-1693
glen.calhoon@cox.com

Electric
Westar Energy
PO Box 889
4001 NW 14th St.
Topeka, KS 66603
Jeremy Lane
(785)575-1340
jeremy.lane@westarenergy.com

Fiber Optic - City of Topeka
City of Topeka, Info. Tech.
620 SE Madison St., 3rd Flr
Topeka, KS 66603
Mark Biswell
(785)368-3718
mbiswell@topeka.org

Fiber Optic - CenturyLink CLEC
Century link CLEC
100 Centurylink Dr.
Monroe, LA 71203
Nate Crockett (913)
312-2715
nate.crockett@centurylink.com

Fiber Optic - USD 501
USD 501, Info. Tech.
1900 SW Hope St.
Topeka, KS 66604
Dickie Hanson
(785)438-4750
dhanson@tps501.org

Fiber Optic - KsFiberNet
Kansas Fiber Network LLC
10875 Benson, Ste. 250
Overland Park, KS 66201
Brad Burger (913)213-2937
bburger@ksfiber.net

Gas
Kansas Gas Service
P.O. Box 3538
200 E 1st St.
Topeka, KS 66601
Dawn Hecker
(785)431-4251
dawn.hecker@onegas.com
For Gas Leaks 1-888-482-4950
911 must also be called immediately

Sanitary/Storm Sewer
City of Topeka, WPC Div.
1115 NE Poplar St.
Topeka, KS 66616
Darrin A. Coffland
(785)368-2467
dcoffland@topeka.org

Telephone
AT&T
220 SE 6th St., Rm 360
Topeka, KS 66603
Daniel Chase
(785)276-6147
dc2553@att.com

City of Topeka, Traffic Ops.
927 NW Harrison St. Topeka,
KS 66612
Duane Morris (785)368-3913
dmorris@topeka.org

Water
City of Topeka, Water Div.
3245 NW Waterworks Dr.
Topeka, KS 66606
Paul Bodner (785)368-2448
pbodner@topeka.org

Know what's below. Call 811 before you dig or visit us at www.kansasonecall.com



"Kansas One-Call" is the Underground Utility Notification center for the State of Kansas. Through this facility, you can notify operators of underground facilities of proposed excavations to request that the underground facilities be marked before you dig.

Kansas Statute annotated 866-1801 through 866-1815 requires anyone who engages in any type of excavation to provide advance notice of at least two full working days, but not more than 15 calendar days, excluding weekends and holidays.

The person who is doing the work is responsible for calling Kansas One-Call. If the owner contracts with a professional excavator to do the excavation, then the professional excavator is responsible for calling Kansas One-Call.

The service provided by Kansas One-Call to excavators is free of charge.
Call 785-368-3111 for emergencies with City of Topeka utilities.

CITY OF TOPEKA

**2019 INFILL SIDEWALK IMPROVEMENT PROGRAM
SIDEWALK IMPROVEMENT PROJECT NO. T-241046.00**

**ELMHURST NEIGHBORHOOD
INFILL SIDEWALK**



INDEX to SHEETS

Sheet	Title
1	Title Sheet
2	General Notes & Summary of Quantities
3	Typical Sections
4 - 7	Plan Sheets - Boswell Avenue
8 - 11	Plan Sheets - College Avenue
12 - 15	Plan Sheets - Mulvane Street
16 - 19	Plan Sheets - Garfield Avenue
20	Plan Sheet - Horne Street
21 - 22	Plan Sheets - 11th Street
23 - 24	Plan Sheets - Munson Avenue
25 - 28	Alley Approach Details
29 - 33	Standard Details
34	Cross-Sections - Munson Avenue

GENERAL NOTE:

All construction methods and materials used in the construction of the improvements covered by these plans shall be in accordance with the Standard Technical Specifications and addendum to the (STS) on file in the office of the City Engineer, City of Topeka, Kansas.

CITY OF TOPEKA, KANSAS	
DEPARTMENT OF PUBLIC WORKS - ENGINEERING DIVISION	
RELEASED FOR CONSTRUCTION	
_____ CITY ENGINEER	_____ DATE
ATTEST:	
_____ CITY CLERK	_____ DATE

NO.	DATE	REVISION	BY	APP'D



Schmidt, Beck & Boyd
Engineering, LLC
1415 SW Topeka Blvd., Topeka, KS 66612
Ph: (785) 215-8630 www.sbbeng.com



Elmhurst Neighborhood
2019 Infill Sidewalk
Program
T-241046.00

Title Sheet

DATE: 6/20/2019
SHEET: 1 OF 34
PROJECT: T-241046.00
SBB #: 19-005